

# The Canadian Philatelist

# Le Philatéliste canadien

March/April 2009 mars/avril - VOL. 60 • NO.2



## THE HIGHLAND GAMES IN CANADA

The origins of the Highland Games may date back nearly 4,000 years to the athletic contests of County Meath, Ireland, which included such events as a chariot-wheel toss. Gaelic-speaking immigrants likely brought the tradition to Scotland, where it took on the unique flavour of the Highland way of life.

Encouraged by clan chiefs, who had a vested interest in the physical prowess of their men, the games spread throughout Scotland. By the 19th century they had gained popularity in the United States, Canada and around the world. While Antigonish, Nova Scotia, is the site of the oldest continuing games, it is just one of dozens of Canadian communities that still uphold this tradition. The Glengarry Highland Games in Maxville, Ontario, celebrate their 50th anniversary in 1997.

Design: Fraser Ross  
Photography: Photographic  
Andrew Barbour; Mansell Collection/Time Inc.



## LES JEUX DES HIGHLANDS AU CANADA

L'origine des jeux des Highlands, ou jeux celtiques, remonterait à quelque 4 000 ans, aux concours athlétiques de County Meath, en Irlande, qui comprenaient des épreuves tel le lancer de la roue de char. Des immigrants d'expression gaélique ont probablement implanté la tradition en Écosse, où elle prit la saveur unique de la vie des Highlands.

Encouragés par les chefs de clans, qui observaient d'un œil intéressé les prouesses physiques de leurs hommes, les jeux se répandirent dans toute l'Écosse. Vers la fin du XIX<sup>e</sup> siècle, ils avaient acquis de la popularité dans certaines régions des États-Unis, du Canada ainsi qu'un peu partout dans le monde. La ville d'Antigonish, en Nouvelle-Écosse, peut s'enorgueillir d'avoir accueilli des jeux celtiques le plus longtemps sans interruption; elle compte parmi le dizaine de communautés canadiennes qui contribuent au maintien de la tradition. Les Jeux des Highlands de Glengarry, qui se tiennent à Maxville, en Ontario, célèbrent en 1997 leur cinquantième anniversaire.

PM40069611 \$5.00  
R 9828 5,00\$



Journal of THE ROYAL PHILATELIC SOCIETY OF CANADA  
Revue de LA SOCIÉTÉ ROYALE DE PHILATÉLIE DU CANADA

# Grow your collection!

Whether you're a seasoned collector or just starting out, you'll want to add these floral beauties to your collection.

Canada Post Rhododendrons stamps and collectibles will spring onto the scene on March 13, 2009.

**Make sure you order yours today!**

# Enrichissez votre collection!

Que vous soyez un collectionneur aguerri ou que vous en soyez à vos premières armes, vous voudrez ajouter à votre collection ces timbres aux magnifiques motifs floraux.

Postes Canada émettra le 13 mars prochain les timbres et articles de collection représentant le rhododendron.

**Assurez-vous d'en commander dès aujourd'hui!**



Souvenir sheet  
Bloc-feuillet

**\$ 1<sup>08</sup>**  
403730145



Booklet of 10 stamps  
Carnet de 10 timbres

**\$ 5<sup>40</sup>**  
413730111



Postage-paid postcards  
(pre-stamped)

Cartes postales  
port payé (affranchies)

**\$ 1<sup>69</sup>**  
each  
l'unité



Official First Day Cover  
Pli Premier Jour officiel

**\$ 2<sup>08</sup>**  
413730131

Available at participating post offices or | Offert dans les bureaux de poste participants ou

Canada/U.S. | Canada/É.-U. :

☎ 1 800 565-4362

From other countries | d'un autre pays :

☎ 902 863-6550



[www.canadapost.ca/collecting](http://www.canadapost.ca/collecting)

[www.postescanada.ca/collection](http://www.postescanada.ca/collection)



From anywhere... De partout...  
to anyone jusqu'à vous

# Eastern Auctions Ltd.

Would like to showcase your collection.



## Canada's most trusted auction house

Since 1980 we have steadily built a reputation for outstanding realizations. Numerous record prices have been achieved for superior quality stamps. Take advantage of our friendly and professional service. Your collection will be described by our expert lotters and lavishly illustrated in our deluxe catalogue. Commission rates are very competitive and prompt payment is always guaranteed.

Contact us today for further details.



Eastern Auctions Ltd.

P.O. Box 250 - Bathurst - New Brunswick - E2A 3Z2 - Canada  
Telephone: 1 (800) 667-8267 - Fax: 1 (888) 867-8267 - E-mail: [easternauctions@nb.aibn.com](mailto:easternauctions@nb.aibn.com)

**THE ROYAL PHILATELIC  
SOCIETY OF CANADA  
LA SOCIÉTÉ ROYALE DE  
PHILATÉLIE DU CANADA**

Patron: Her Excellency The Right Honourable Michaëlle Jean,  
C.C., C.M.M., C.O.M., C.D., Governor General of Canada  
Présidente d'honneur: Son Excellence la très honorable Michaëlle Jean,  
C.C., C.M.M., C.O.M., C.D., Gouverneure générale du Canada

**2008-2009  
BOARD OF DIRECTORS –  
CONSEIL D'ADMINISTRATION  
EXECUTIVE - L'EXÉCUTIF**

**President - Président**

Rick Penko, FRPSC  
Dallas, Texas  
president@rpsc.org

**Management Team - Équipe de gestion**

JJ Danielski, Toronto, ON - jjad@rogers.com  
Michael Peach, Halifax, NS - michael.peach@ns.sympatico.ca  
George F. Pepall, FRPSC, Kitchener, ON - pepall@rogers.com  
W. John Sheffield, London, ON - john@johnsheffield.com

**Treasurer - Trésorier**

Peter Kritz  
Hanover, ON  
treasurer@rpsc.org

**Secretary - Secrétaire**

Peter Butler  
Toronto, ON  
pbutler@ilap.com

**Past President - Président Sortant**

Charles J. G. Verge, FRPSC, FRPSL  
Toronto, ON  
cjgverge@rogers.com

**Directors – Les Directeurs**

François Brisse, FRPSC, Beaconsfield, QC  
fbrisser@sympatico.ca

JJ Danielski, Toronto, ON  
jjad@rogers.com

Raymond Ireson, FRPSC, Roxboro, QC  
info@rpsc.org

Kenneth Magee, FRPSC, Clinton, ON  
kimagee@tcc.on.ca

Robert McGuinness, West Vancouver, BC  
mrmacis@shaw.ca

Michael O. Nowlan, Oromocto, NB  
mgnowlan@nb.sympatico.ca

Michael Peach, Halifax, NS  
michael.peach@ns.sympatico.ca

George Pepall, FRPSC, Kitchener, ON  
pepall@rogers.com

David Piercey, Edmonton, AB  
david.piercey@epsb.ca

W. John Sheffield, London, ON  
john@johnsheffield.com

**Editor – Rédacteur**

Tony Shaman, FRPSC  
PO Box 43103, Eastwood Square  
Kitchener, ON N2H 6S9  
tshaman@rogers.com

**Associate Editor – Rédacteur Associé**

Grégoire Teyssier, Sillery, QC  
gteyssier@videotron.ca

**National Office – Bureau National**

Peter Butler, Director / Directeur  
director@rpsc.org  
Margaret Schulzke, Executive Assistant / Adjointe Exécutive  
info@rpsc.org  
P.O. Box / C.P. 929, Station, Succ Q, Toronto, ON M4T 2P1  
Tel/Tél: (416) 921-2077  
Toll Free / Sans frais: 1-888-285-4143  
Fax/Télécp: (416) 921-1282  
www.rpsc.org

**An invitation to join...  
Joignez-vous à...**

**THE ROYAL PHILATELIC SOCIETY OF CANADA  
LA SOCIÉTÉ ROYALE DE PHILATÉLIE DU CANADA**

The Royal Philatelic Society of Canada (RPSC) is the successor to the national society founded in 1887. Membership in the Society is open to anyone interested in stamps. Whether you are a beginner or an advanced collector, The RPSC offers a number of services that will be of interest to you. Here are just a few:

**THE CANADIAN PHILATELIST** - The international award winning bi-monthly magazine of The RPSC, it provides stamp collectors information and news – for members and from the members. Each year, the author of the best article published in *The Canadian Philatelist* receives the Geldert medal.

**SALES CIRCUIT** - The Sales Circuit is a useful method of disposing of surplus material and acquiring other material for your collection. Details on request.

**ANNUAL MEETING** - An annual convention held in a different locale each year provides an ideal opportunity to meet friends, exchange ideas, and get advice on your collection or exhibition at which exhibitors can qualify for international shows. You will also get a chance to visit a dealer bourse and attend interesting and informative seminars.

**GROUP INSURANCE** - Group insurance is available for members to obtain coverage for their personal collections. Chapters can arrange third party liability coverage to protect the club and its events. Both policies have substantially lower premiums than non-members would pay for similar packages. Details are available on both types of insurance, upon request, from the National Office.

**CHAPTERS** - The RPSC has a network of local clubs across Canada. Chapter meeting details are published in *The Canadian Philatelist*. A great way to network with other collectors in your area.

**THE INTERNET** - The Society has a Web site [www.rpsc.org](http://www.rpsc.org) where members can find out about the latest developments, coming events and link up to many other stamp collecting sites. As a member, your e-mail and Web site address can be added.

**OTHER SOCIETIES** - As the national society for stamp collectors, The RPSC works in partnership with many other societies and associations, such as the Canadian Stamp Dealers Association and Canada Post Corporation.

**CANADA POST** - The Society maintains a Canada Post Liaison Officer in Ottawa to represent the Society, its members and chapters and collectors in general. Members may raise issues of mutual interest with Canada Post Corporation through this office.

**Join The RPSC!**

La Société royale de philatélie du Canada (SRPC) est la digne successeur de celle fondée en 1887. Tout individu intéressé par la collection de timbres-poste peut en devenir membre. Que vous soyez un collectionneur débutant ou chevronné, la SRPC vous offre une gamme de services qui sauront vous intéresser. En voici quelques-uns:

**LE PHILATÉLISTE CANADIEN** - Cette publication bimestrielle, primée au niveau international, offre aux membres des informations et des nouvelles sur le monde philatélique rédigées par ses membres. Chaque année, la médaille Geldert est décernée à l'auteur du meilleur article publié dans *Le philatéliste canadien*.

**CARNETS DE TIMBRES EN APPROBATION** - Ils sont disponibles sur demande. C'est une façon facile de disposer de matériel en surplus ou d'acquérir des nouvelles pièces pour sa collection.

**RÉUNION ANNUELLE** - Une convention annuelle se tient dans différentes parties du pays. Une exposition de niveau national fait partie intégrante de la convention et permet à l'exposant de se qualifier pour les expositions internationales. De plus vous pouvez y visiter les tables de négociants et assister à des conférences.

**ASSURANCES** - les membres peuvent obtenir une assurance-groupe afin de protéger leurs collections personnelles. Les chapitres peuvent souscrire une assurance responsabilité vis-à-vis des tiers pour protéger un club et les événements qu'il organise. Les primes pour les deux polices sont de beaucoup inférieures à ce qu'un non-membre paierait pour un contrat similaire. Vous pouvez obtenir des renseignements sur ces deux types de police en vous adressant au Bureau national.

**CHAPITRES** - Des clubs locaux au Canada où les membres de La SRPC reçoivent un accueil chaleureux. Les renseignements sont publiés dans *Le philatéliste canadien*.

**L'INTERNET** - La SRPC a un site d'Internet [www.rpsc.org](http://www.rpsc.org) où les membres obtiennent les informations à date, les événements philatéliques à venir et peuvent accéder à plusieurs autres sites philatéliques.

**PARTENARIAT** - La Société a des ententes avec plusieurs autres sociétés et associations philatéliques, notamment l'Association canadienne des négociants en timbres-poste et la Société canadienne des postes (SCP).

**POSTES CANADA** - La SRPC a un agent de liaison situé à Ottawa pour représenter La Société, ses Chapitres, ses membres et les collectionneurs en général auprès de la SCP. Les membres peuvent soumettre des questions d'intérêt commun aux deux Sociétés par l'entremise de cet agent.

**Joignez-vous à La SRPC**

# Membership Application Formulaire d'adhésion

 Mr. / M Mrs. / Mme Miss / Mlle Ms / Mdlle Dr. / Dr.

First Name / Prénom:	Middle Initials / Initiales:	Last Name / Nom de famille:
Address / Adresse:		
City / Ville:	Province or State / Province ou État:	
Postal Code / Code postal:	Country / Pays:	
Telephone / Téléphone:		
E-mail Address / Courriel:		
Collecting interests / Intérêts philatéliques:		

The information collected on this form will be used for communications from The RPSC Office and its authorized suppliers. The Society publishes the name of each new member in *The Canadian Philatelist*. Your member information will be held confidential by the Society and will never be sold or traded to advertisers without your prior consent. If you have any questions, please contact The RPSC Office at 1-888-285-4143.

L'information fournie dans ce formulaire nous permettra de vous faire parvenir la correspondance de La SRPC et ses fournisseurs autorisés. La Société publie le nom de chaque nouveau membre dans *Le philatéliste canadien*. La Société assure la confidentialité de vos renseignements et s'engage à ne jamais les vendre ou les échanger auprès de fournisseurs et/ou d'agents de publicité sans avoir obtenu votre autorisation. Pour tous renseignements supplémentaires, veuillez communiquer avec La SRPC au 1-888-285-4143.

\_\_\_\_\_  
Signature

\_\_\_\_\_  
Date

## MEMBERSHIP and FEES / TYPES et FRAIS D'ADHÉSION

- Membership and *The Canadian Philatelist* – Fee \$39.50 including a one-time \$5.00 application fee.  
Note: Annual renewal fee \$34.50
- The Canadian Philatelist* only – Fee \$28.50
- Membership only – Fee \$15.00
- Life membership – Fee \$690.00
- Family membership – Fee \$39.50 for first member, \$15 each subsequent member

- Membre et *Le philatéliste canadien* – Frais 39,50\$ inclus des frais d'administration unique de 5,00\$.  
Avis : renouvellement annuel, 34,50 \$
- Le philatéliste canadien* seulement – Frais 28,50\$
- Membre seulement – Frais 15,00\$
- Membre à vie – Frais 690,00\$
- Famille – Frais 39,50\$ pour le premier membre, et 15,00\$ chacun pour tous les autres.

All fees cover a 12-month period from date of initial publication and/or include 6 issues of *The Canadian Philatelist*. The RPSC reserves the right to adjust the terms. Payable in Canadian Funds if resident in Canada, otherwise payable in US Dollars or its Canadian equivalent. Life memberships are available. Please contact the National Office.

La cotisation couvre une période de douze mois à partir de la date de publication initiale et/ou donne droit à six numéros du *Philatéliste canadien*. Payable en devises canadiennes si résident au Canada et en devises américaines (ou leur équivalent en dollars canadiens) autrement. Des adhésions à vie sont aussi disponibles.

## PAYMENT INFORMATION / INFORMATION SUR LE MODE DE PAIEMENT

- Cheque enclosed. / Chèque ci-joint.
- Please charge my first year dues and all future payment of dues to my VISA/AMEX card. /

Name as appears on VISA/AMEX card / Nom tel qu'inscrit sur la carte - VISA/AMEX:	
VISA/AMEX Card Number / Numéro de la carte - VISA/AMEX:	Expiry Date / Date d'expiration:

Veuillez porter les frais annuels, incluant les renouvellements annuels futurs à ma carte de crédit – VISA/AMEX.

Mail To / Postez à:  
The Royal Philatelic Society of Canada / La Société royale de philatélie du Canada  
P. O. Box / C.P. 929, Station / Succ "Q", Toronto, ON, Canada, M4T 2P1  
Website / site internet: [www.rpsc.org](http://www.rpsc.org)

## DEPARTMENTS and COMMITTEES / SERVICES et COMITÉS

### APS Liaison / Liaison avec l'APS

National Office, Toronto, ON info@rpssc.org

### Canada Post Liaison / Liaison avec Postes Canada

Robin Harris, FRPSC, Seddons Corner, MB webmaster@rpssc.org

### Chapter & Affiliates Liaison /

### Liaison avec les clubs membres et affiliés

George Pepall, FRPSC, Kitchener, ON pepall@rogers.com

### Royale/Royal Conventions, National, Regional & Local Shows / Congrès Royale/Royal, expositions nationales, régionales et locales

Kenneth Magee, FRPSC, Clinton, ON kmagee@tcc.on.ca

### CSDA Liaison / Liaison avec l'ACNTP

W. John Sheffield, London, ON john@johnsheffield.com

### Ethics Committee / Comité des plaintes

Michael Millar, FRPSC, Barrie, ON mmillar@apexia.ca

### 50-Year Club/Le Club des 50 ans

Michael Madesker, RDP, FRPSC, Président/Président

### FQP Liaison / Liaison avec la FQP

François Brisse, FRPSC, Beaconsfield, QC fsbrisse@sympatico.ca

### Historian / Historien

Charles J. G. Verge, FRPSC, FRPSL, Toronto, ON cjverge@rogers.com

### Insurance Plan / Plan d'assurances

Peter Butler, Toronto, ON pbutler@ilap.com

### International Liaison / Liaison internationale

Charles J. G. Verge, FRPSC, FRPSL, Toronto, ON cjverge@rogers.com

### Legal Advisor

Theodor Kerzner, QC, Kerzner, MacDermid, McKillop, Toronto, ON

### Membership Development / Promotion du recrutement

W. John Sheffield, London, ON john@johnsheffield.com

### National & Regional Judging Program and Coordinator of Reciprocity Agreements / Programme national et régional d'évaluation, et coordonnateur des accords de réciprocité

Dr. David Piercey, Edmonton, AB david.piercey@epsb.ca

### National & Regional Medals and Awards /

### Prix et médailles aux niveaux national et provincial

Raymond Ireson, FRPSC, Roxboro, QC info@rpssc.org

### National Office / Bureau national

Peter Butler, Director/ Directeur

Margaret Schulzke, Executive Assistant / Adjointe Exécutive  
Garfield Portch, Membership Coordinator / Coordonnateur des adhésions  
P.O. Box / C.P. 929, Station, Succ Q Toronto, ON M4T 2P1, CANADA  
Tel/Tél: (416) 921-2077, 1-888-285-4143 Fax/Télécr: (416) 921-1282  
director@rpssc.org www.rpssc.org

### Public Relations / Relations publiques

Michael O. Nowlan, Oromocto, NB mgnowlan@nb.sympatico.ca

### RPSC National Exhibits Data /

### Données sur les expositions nationales de la SRPC

Robert McGuinness, West Vancouver, BC mrmacis@shaw.ca

### RPSC Website / Site internet de la SRPC

D. Robin Harris, FRPSC, webmaster@rpssc.org

### Sales Circuit / Carnets de timbres en approbation

RPSC Circuits, Box 1109, Cochrane, AB T4C 1B2

Tel/Tél Fax/Télécr: (403) 932-2947 rpssale@telus.net

### Slide Program / Diapotheque

Elizabeth Sodero, FRPSC, Halifax, NS sodero@ns.sympatico.ca

### T.A.P.E. Executive Director / T.A.P.E. Directeur exécutif

Peter Butler, Toronto, ON pbutler@ilap.com

### The Canadian Philatelist / Le philatéliste canadien

P.O. Box/C.P. 929, Station/Succ Q, Toronto, ON M4T 2P1

Editor / Rédacteur, Tony Shaman, FRPSC, PO Box 43103, Kitchener, ON N2H 6S9  
tshaman@rogers.com

Advertising: Ernie Nyitrai, (905) 477-1511, enyitr618@rogers.com

### Youth Education / Éducation de la jeunesse

Yvan Latulippe, Ville St. Laurent, QC, yvan.latulippe@sympatico.ca

## LIST OF ADVERTISERS / LISTE DES ANNONCEURS

BNAPS.....	104
Canada Post.....	66
Canadian Stamp News.....	126
Cavendish Philatelic Auctions Ltd.....	73
Coates & Coates.....	113
CPS of Great Britain.....	89
CSDA.....	104
Eastern.....	67
E.S.J. van Dam.....	103
Gary J. Lyon Ltd.....	127
Greenwood.....	86
Jeff Melski.....	79
John Walsh.....	88
Maresch, R. & Son.....	128
Mark Lane.....	103
Postal History Society of Canada.....	111
RPSC Research Foundation.....	104
RPSC Sales Circuit.....	102
Saskatoon.....	75
Sparks-Auctions.com.....	111
Vance Auctions.....	79
Vincent Graves Greene Philatelic Research Foundation.....	83

We acknowledge the financial support of the Government of Canada through the Publication Assistance Program (PAP) toward our mailing costs.

Nous remercions le gouvernement du Canada pour son appui financier pour nos frais de poste par l'entremise du Programme d'assistance aux publications (PAP).

# Canada

*The Canadian Philatelist* (ISSN 00-45-5253) published bimonthly by Philaprint Inc. 10 Summerhill Avenue, Toronto, Ont., M4T 1A8. Printed and produced in Canada by Trajan Publishing Corporation. ©Philaprint Inc. 2009. Opinions expressed herein are those of individual authors only and neither the Publisher nor The Royal Philatelic Society of Canada accepts responsibility for them. Manuscripts should be typewritten or submitted on computer disk. Only original articles will be considered. Books and Literature for review should be submitted to the editor. None of the editor, the Society, the publisher nor any officer or director either incurs any liability for any article or manuscript or any item accompanying such article for photography, all of which are at the sole risk of the person submitting same. Indexed in the Canadian Magazine Index and available online in the Canadian Business and Current Affairs Database. The Publisher reserves the right to decline any advertising and acceptance does not imply endorsement of the product or service.

Subscription price for members of The Royal Philatelic Society of Canada \$25.00 per year. This amount is included in membership fees and the members automatically receive the journal. Non-members \$30.00 per year. Changes of address, undeliverable copies and orders for subscriptions should be sent to PO Box 929, Station Q, Toronto, Ont., M4T 2P1. Return postage guaranteed. Publications Mail Registration No. 09828.

*Le philatéliste canadien* (ISSN 00-45-5253), bimensuel publié par Philaprint Inc., 10 Summerhill Avenue, Toronto, Ont., M4T 1A8. Fait et imprimé au Canada par Trajan Publishing Corporation. ©Philaprint Inc. 2009. Les opinions émises sont celles des auteurs seulement et ni l'éditeur, ni La Société royale de philatélie du Canada n'accepte leur responsabilité. Les manuscrits doivent être écrits à la machine ou soumis sur disquette d'ordinateur. Seuls les articles originaux seront pris en considération. Les livres et articles à examiner doivent être soumis au rédacteur en chef. Aucune responsabilité n'est acceptée par le rédacteur, la Société, l'éditeur ou tout membre du bureau ou du comité directeur, pour tout article, manuscrit ou tout autre document, comme des photographies, accompagnant ledit article ou manuscrit. La personne soumettant l'article sera seule responsable. Figure à l'Index des magazines canadiens et est disponible sur Internet sous les bases de données de la Canadian Business and Current Affairs. L'éditeur se réserve le droit de refuser toute publicité; l'acceptation n'implique en rien une recommandation du produit ou du service.

Le prix de l'abonnement est de 25 \$ par an pour les membres de La Société royale de philatélie du Canada. Ce montant est inclus dans la cotisation et les membres reçoivent automatiquement le magazine. L'abonnement pour les non-membres est de 30 \$ par an. Les changements d'adresse, les exemplaires non-livrés et les demandes d'abonnement doivent être envoyés à : C.P. 929, Succursale Q, Toronto, Ont., M4T 2P1. Le port de retour est garanti. Le numéro d'enregistrement des éditions est : 09828.

# Contents

## Table des matières

### articles & information

An Invitation to Join / Joignez-vous à .....	68
Membership Application / Formulaire d'adhésion.....	69
Departments and Committees / Services et comités.....	70
Alphabetical List of Advertisers / Liste des annonceurs.....	70
Editor's Notes / Notes du rédacteur.....	72
In The Mailbox / Dans la boîte aux lettres .....	74
Exchange / Demandes d'échange .....	74
News, Views, & Happenings / Nouvelles, opinions et événements.....	76
Nomination of Directors / Nomination des directeurs.....	90
Proxy Form / Formulaire de procuration.....	93
ROYAL*2009*ROYALE Prospectus / Formulaire.....	94
President's Page / La page du président.....	114
Membership Reports / Des nouvelles de nos membres .....	115
In Appreciation... / Nous désirons exprimer notre reconnaissance.....	115
Messages From The National Office / Messages du bureau national.....	116
Coming Events / Calendrier .....	118
In Memoriam / Nécrologie.....	120
Classifieds / Annonces classées.....	121
Book Reviews / Ouvrages parus .....	122

### the cover / page couverture:

THE PIPER'S HANDS © Margojh | Dreamstime.com

References to bagpipe-like instruments are found in antiquity. Their modern descendent, the Great Highland Bagpipe, is most closely associated with military and civilian bands and, of course, Highland games.

It would be difficult to attend any sizeable parade anywhere in Canada without seeing and hearing a pipe band. Scottish culture and bagpipes are inseparable and Canada Post has commemorated the contributions of its Scottish immigrants on postage stamps, covers and postcards.

On trouve des références à des instruments de musique semblables à la cornemuse dès l'Antiquité. Leur descendante moderne, la cornemuse d'Écosse, est étroitement associée à la musique militaire et civile, et bien sûr, aux Jeux écossais.

Où que ce soit au Canada, on ne s'imagine pas un défilé de taille respectable sans cornemuses. La culture écossaise et la cornemuse sont inséparables; et Postes Canada a commémoré la contribution des immigrants écossais au Canada par des timbres, des plis et des cartes postales.



**Canadian Bank Note Engraving & Printing Co.**  
by George B. Arfken, FRPSC . . . . . **77**



**Words, Words, Words**  
by Dave Dufour . . . . . **80**



**Royal Philatelic Convention Comes to St. Catharines in 2009**  
by Skip Gillham . . . . . **84**



**Canada's Map Stamp: Investigating the Island Names**  
by Orville F. Osborne . . . . . **87**



**Bigger & Better**  
by Andrew Notley . . . . . **103**



**Golden Jubilee Errors: What Every Philatelist Should Know**  
by Joseph Monteiro . . . . . **105**



**Baggies Around The World: Part 1**  
by Alena Pascual . . . . . **110**



**Transcribing Sounds**  
by Michael Madesker,  
RDP, FRPSC . . . . . **112**



**Varieties**  
by "Napoleon" . . . . . **113**



## EDITOR'S notes notes du RÉDACTEUR

by / par Tony Shaman, FRPSC

From the current and previous issues of *The Canadian Philatelist*, readers will have noticed that our magazine earned two Large Silver awards in 2008. The first was awarded at World Stamp Championship, ISRAEL 2008, May 14-21, in Tel Aviv and the second at the World Philatelic Exhibition, EFIRO 2008, in Bucharest, Romania.

My thanks go to the many dedicated individuals without whose ongoing contributions and dedication we would not have an award-winning magazine. Producing *The Canadian Philatelist* is a team effort and everyone involved in its production deserves our thanks and appreciation for their efforts.

Readers, however, may have noticed that these two awards, Large Silvers, are one level below the awards of recent years. Although it is not a huge backward step from a Vermeil to a Large Silver medal, it is of some concern and warrants looking into. For that reason, I discussed the awards with the commissioner to ISRAEL 2008, J.J. Danielski, who provided the following background information.

Literature awards are based on the following criteria: Treatment of contents – 40%; Originality, significance, and depth of research – 40%; Technical matters – 15%; and Presentation – 5%.

Treatment of contents evaluates literary style, clarity and communications skills. Our score was 28 points out of 40 or 70%. We did somewhat better for the originality component, which looks at the overall significance of the published articles as well as the degree to which articles uncover new discoveries and research and analysis of the understanding of the subject matter under discussion. For these elements, the magazine received 30 points out of 40 or 75%.

We did considerably better for the remaining two elements: Technical matters and Presentation. The judges awarded a mark of 14 out of 15 or 93% for Technical matters and 4 out of 5 or 80% for Presentation. The obvious conclusion, if the magazine is to earn a higher award, is that we need to improve our literary style and print a greater number of articles with original research content.

Given the age of our hobby, over 160 years, it is probably fair to conjecture that most aspects dealing with the older, classical stamps have been studied and researched in great detail and little remains unsaid. But there may still be new ways of looking at the classical stamp era differently. There may well be valid viewpoints that previous authors and researchers have overlooked.

But, more to the point, the judging regulations, at least as far as they have been put into writing, do not stipulate that original research must be restricted to classical era issues. Theoretically, that leaves wiggle room for authors to research

Ceux qui ont lu le numéro précédent *du Philatéliste canadien* ou celui-ci ont remarqué que notre revue a remporté deux médailles de Grand Argent en 2008 : la première au championnat mondial, qui a eu lieu à Tel-Aviv, en Israël, du 14 au 21 mai, et la seconde, à l'exposition mondiale EFIRO 2008, à Bucarest en Roumanie.

Je remercie les nombreuses personnes dévouées, empressées et fidèles sans qui nous n'aurions pas une revue primée. La production *du Philatéliste canadien* est un travail d'équipe et chacune des personnes qui y participent mérite nos remerciements et notre reconnaissance pour ses efforts.

Toutefois, certains lecteurs ont peut-être remarqué que nos deux prix Grand Argent sont inférieurs d'un niveau à ceux que nous avons reçus ces dernières années. Bien qu'une régression de Vermeil à Grand Argent ne constitue pas un énorme pas en arrière, un tel recul est inquiétant et mérite notre attention. C'est pourquoi j'en ai parlé avec J. J. Danielski, commissaire d'ISRAËL 2008, qui m'a donné les renseignements de base suivants.

Les prix d'écriture sont évalués selon les critères suivants : traitement du contenu – 40%; originalité, importance et profondeur de la recherche – 40%; aspects techniques – 15%; présentation – 5%.

Le traitement du contenu a trait au style littéraire, à la clarté et aux compétences en communication. Nous avons obtenu 28 points sur 40 ou 70%. Nous avons réussi un peu mieux en matière d'originalité, un critère évalué selon l'importance générale des articles publiés, la proportion dans laquelle les articles révèlent de nouvelles découvertes, les recherches et l'analyse qui éclairent la compréhension du sujet discuté. Pour ces éléments, notre revue a obtenu 30 points sur 40 ou 75%.

Nous avons réussi beaucoup mieux avec les deux derniers éléments : aspects techniques et présentation. En effet, les juges nous ont accordé 14 sur 15 ou 93% pour le premier et 4 sur 5 ou 80% pour le deuxième. Une conclusion s'impose, si nous voulons que notre revue se hisse à un niveau supérieur de récompense, nous devons améliorer notre style littéraire et l'originalité de nos articles.

Compte tenu de l'âge de notre passe-temps, plus de 160 ans, nous pouvons à juste titre supposer que la plupart des sujets ayant trait aux anciens timbres classiques ont été abondamment étudiés, ont fait l'objet de recherches détaillées, et qu'à peu près tout a été dit. Il existe cependant peut-être des façons différentes de voir et de présenter ces timbres classiques. Il se pourrait que les auteurs et les chercheurs en aient négligé certains aspects intéressants.

De plus, les règlements relatifs au jugement, du moins tels qu'ils sont rédigés, ne stipulent pas que la recherche originale doive se restreindre aux émissions de l'époque classique. En théorie, cela donne une marge de mouvement aux auteurs qui souhaitent traiter de sujets modernes qui n'ont pas été étudiés et commentés à n'en plus finir. Quelqu'un est-il preneur?



modern issues that have not been studied to death and endlessly written about. Any takers?

In this issue we welcome back an author whose work has not appeared in our magazine for nearly a decade. Several of Alena Pascual's stamps depicting musical instruments on stamps illustrated the cover of the March-April 1999 edition. Alena now writes about a musical instrument, the bagpipes, so dear to Scottish hearts, that stirs the emotions of listeners far and wide.

And what could be more appropriate for the print media than an article on words? In his article entitled "Words, Words, Words", an author new to the pages of *The Canadian Philatelist*, Dave Dufour, makes judicious use of the now familiar expressions coined by Sir Winston L. Churchill, a gifted wordsmith and a two-time British prime minister. There can be little doubt that his pithy observations rallied a nation into extraordinary effort during the darkest days of World War II.

Although we do not routinely print previously published material (in fact our editorial guidelines stipulate that only original material will be considered for publication in our magazine) we do make exceptions from time to time. In this issue we reprint a short monograph from *Contact*, an in-house Canada Post Corporation publication. The piece provides information not ordinarily available to readers other than CP employees or retirees.

Of course, we have not overlooked our faithful, long-time contributors. Without their on-going dedication it would be difficult to bring to readers the wide-ranging philatelic information that their continuing efforts make possible. ☒

Dans le présent numéro, nous accueillons à nouveau une auteure, absente de nos pages depuis près d'une décennie Alena Pascual. En effet, plusieurs timbres d'Alena Pascual sur lesquels figurent des instruments de musique ont illustré la page couverture de notre édition d'avril 1999. Alena écrit maintenant sur un instrument de musique, la cornemuse, si chère aux coeurs écossais et qui suscite beaucoup d'émotions chez ceux qui l'entendent.

Et, quoi de plus approprié qu'un article sur les mots dans un média imprimé? Dans son article intitulé « Words, Words, Words », un nouvel auteur dans les pages du *Philatéliste canadien*, Dave Dufour, utilise judicieusement les expressions devenues familières de sir Winston Churchill, un homme qui savait manier les mots et qui a été deux fois premier ministre du Royaume-Uni. À n'en pas douter, ses remarques savoureuses ont rallié la nation dans un effort extraordinaire pendant les jours les plus sombres de la Deuxième Guerre mondiale.

Bien que nous n'ayons pas l'habitude de publier des articles ayant déjà paru (en fait, selon notre politique éditoriale, seuls des articles originaux doivent être publiés) il arrive que nous fassions une exception. Dans le présent numéro, nous publions une courte monographie tirée de *Contact*, une publication à usage interne de la Société canadienne des postes. Elle fournit de l'information habituellement réservée aux employés de Postes Canada ou à ses retraités.

Évidemment, nous n'avons pas oublié nos collaborateurs fidèles et de longue date. Sans leur dévouement continu, nous pourrions difficilement procurer à nos lecteurs toute la gamme variée de renseignements philatéliques que leurs efforts constants rendent possible. ☒

## SPRING 2009 AUCTIONS AT



**19 March 2009—**

**The Drs. Joan & Gordon Harper  
Collections of *British Honduras,  
Foreign Branch, Maritime Mail,  
Free Franks, Post Offices Used  
Abroad, etc.***



**22/23 April 2009 -**

**The Angus Parker Gold Medal  
Collections of *Iceland and Yemen.***

Please contact James Grimwood-Taylor,  
Ken Baker or Nick Wraith for further details  
or to consign to these special sales.



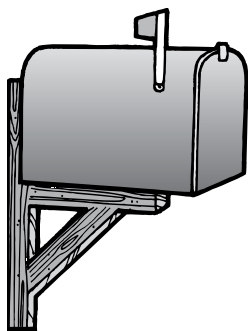
Phone: +44 01332 250970 Fax: +44 01332 294440

Email: [stamps@cavendishphilauc.demon.co.uk](mailto:stamps@cavendishphilauc.demon.co.uk)

**[www.cavendish-auctions.com](http://www.cavendish-auctions.com)**

Cavendish House, 153-157 London Road, Derby, DE1 2SY, U.K.

***One of the World's Leading Specialist Auctioneers of Fine Stamps & Postal History—Renowned for our Expertise, Service & Results.***



## in the MAILBOX dans la boîte aux LETTRES

### WHAT'S IN A NAME?

Dear Editor,

I wonder if there's been any thought given to removing "Royal" from the Society's name. While there is, no doubt, a tradition associated with the current name, it sounds pro-British and monarchist. It also suggests a certain lack of independence from, and subjugated linkage to, the Royal Philatelic Society in London.

The "Royal" title makes permanent emphasis to having sought and received approval from an overseas monarch, leaving one wondering if the group is concerned with honouring royalty as much as appreciating philately, if not more.

Might I suggest possible alternatives:

- Philatelic Society of Canada
- The National Philatelic Society

A change in this direction would reflect confidence in ourselves and our nation, without any need for offshore approval.

I'm most interested in your thoughts.

Sincerely,  
Ryan Masuga

you feature a letter about Canada Post's flipped images involving a British Columbia lighthouse and that province's first governor (Flippin' Eh!, Andrew Liptak) you have apparently flipped the picture of Santa Claus on your cover! (The names and check marks on his list are reversed). A flip-pin' coincidence?

David Williams  
Saint John, New Brunswick

*The image of Santa Claus worked best for this layout if it was horizontally flipped. How the names on the list would appear was never even considered. I best take a lesson from the jolly old man in the red suit and check the list twice.*  
- Production Coordinator

### CHECKING IT TWICE

Dear Editor,

It's interesting that in the November/December 2008 issue of *The Canadian Philatelist* in which

## EXCHANGE / demandes D'ÉCHANGE

Dear Editor,

I am a female stamp collector from Denmark. Being from Denmark, I understandably have many Danish stamps to trade. I am interested in making contact with a collector interested in the stamps of Denmark in exchange for Canadian stamps.

My e-mail address is:bojac@bog.dk

Sincerely yours ,  
Bodil Jacobsen  
Vedsletvej 11, Vedslet,  
DK 8732 Hovedgaard Denmark

Dear Editor,

I am a philatelist from Bulgaria and collect maximum cards on the following topics: Italian paintings, churches, frescoes, icons and antique and middle-age ships. I also collect stamps, FDCs and used envelopes on the topic of table tennis.

I would be truly happy to have a correspondent from your country. This is why I would like to ask you to publish

my address (both postal and e-mail) in your magazine. I answer every letter.

In exchange, I offer mint stamps, FDCs and used covers on different topics from Bulgaria and other countries.

May I take this opportunity to extend belated Season's Greetings, good health and success in the New Year.

Best regards,  
Ivan Panayotov  
52, Luben Karavelov St.  
5000 – Veliko Tarnovo Bulgaria  
e-mail: panaiotov\_vturnovo@abv.bg

Dear Editor,

Stamps allow us to identify and to recognize the different countries throughout the world, their traditions, nature, opportunities, historic leaders and so on.

Stamps, therefore, play an important role and have an educational value as they enrich one's knowledge of history, culture, religion and the many other aspects defining a people and their country. Exchanging stamps can strengthen

the bonds of friendship among people.

I am a Tunisian philatelist and I have a small number of stamps in my collection.

Please help me to expand my collection by sending me stamps of the world.

My address:  
Mr. Benjeddou Saber ben Ayachi  
Cit  el banafsej  
9114 Menzel Bouzaienne Tunisia  
Saberbjd2003@yahoo.fr

Dear Editor,

I have recently posted my webpage dealing with Swedish stamps (RINGTYP) as they relate to my favourite cancellations in H-lan (Kalmar lan). <http://hem.bredband.net/b147096/index.htm>.

I wonder if you know someone who collects old Swedish stamps and if you would pass along my interest in this collecting area.

Regards  
Stefan Ekroth  
Vastervik, Sweden

# CANADA • BNA

*From Choice Classics to Modern Errors & Varieties*



*Our Specialty...*



*...The Unusual*



View and shop our on-line database of Canadian and BNA stamps at:

[www.saskatoonstamp.com](http://www.saskatoonstamp.com)

Our web site offers an on-line shopping cart where you can look through and order from our large stock of Canadian and BNA stamps and literature. You can also start a want list, see which upcoming shows we will be attending, find out what kind of material we are looking for, and much more.

**FREE ON REQUEST:**

*Our current private  
treaty catalogue of  
Canadian and BNA stamps.*

*Call, Fax, E-mail or Write.*

## WANTED: CANADIAN ERRORS

We are always on the lookout for new and better errors and varieties. Let us know what you have for sale.

**IMPERFS - MISSING COLOURS - INVERTS - MISPERFS - COLOUR SHIFTS - PRINTED ON GUM - BETTER VARIETIES**



**WANTED: NEWFOUNDLAND GUY ISSUE of 1910-11** (#87-103) and 1914 Money Order Tax overprint (#NFM 1) and all varieties. Proofs, mint or used multiples, Whitehead Morris trade sample sheets of 4, in any color and singles and pairs from those that were cut up. Any Die Proofs would be wonderful. Just getting started on Postal History of this issue so any covers are of interest, particularly usages to anywhere outside of Newfoundland with any combination of stamps. Single usages of any values other than 1c & 2c and these are still of interest if they carry nice clear postmarks of smaller Newfoundland towns. On this issue I'm a collector, not a dealer, so you don't have to be kind on pricing - Kind is you offering me the opportunity to acquire some neat items that will enhance the collection. Please phone or fax John Jamieson at Saskatoon Stamp Centre or email directly at [ssc.john@saskatoonstamp.com](mailto:ssc.john@saskatoonstamp.com)

*Internationally Recognized as a Leading Dealer in Canadian Errors and Varieties*

## SASKATOON STAMP CENTRE

P.O. Box 1870, Saskatoon, SK, S7K 3S2 Canada  
Call TOLL FREE 1-800-205-8814 in North America  
Phone: (306) 931-6633

Fax: (306) 975-3728

E-mail: [ssc@saskatoonstamp.com](mailto:ssc@saskatoonstamp.com)



Web site: [www.saskatoonstamp.com](http://www.saskatoonstamp.com)

# news, views & HAPPENINGS

## nouvelles, opinions et ÉVÈNEMENTS



### SINCEREST THANKS

After hosting the successful Royal\*2004\*Royale, the Nova Scotia Stamp Club used some of the profits to establish a fund for the advancement of philately. A portion of this was used to cover the small deficit on Novapex 2006, the first national level Novapex. This year the club decided to donate \$500 from this fund to The Royal Philatelic Society of Canada, and at the December meeting of the club, the treasurer Marilyn Melanson presented RPSC board member Michael Peach, with a cheque in that amount.

### OUR MULTI-FACETED HOBBY

*Canadian Philately – An Outline* is a 96-page booklet published by the British North America Philatelic Society that summarizes the myriad and fascinating collecting interests of the Society's members who collect the stamps and postal history of Canada and the pre-confederation colonies. Its purpose is to demonstrate the many unusual collecting areas of BNA philately to the non-BNA collector and to introduce different collecting subjects to the Society's members. It covers 20 different specialty topics.

The booklet was distributed to members and will be made available to other interested collectors.

A full colour version of the booklet is available on the Internet. It can be accessed, without charge, from the Society's website [www.bnaps.org](http://www.bnaps.org). Look for the link under the "The Hobby" section of the main page.

### APS BOARD SELECTS WADE E. SAADI AS PRESIDENT; FILLS VACANCY LEFT BY DEATH OF NICK CARTER

A Life Member of the APS, President Saadi previously served on the APS Board as a Director-at-Large, and more recently as Chairman of the Board of Vice Presidents, as well as chairing the APS Membership Recruiting Committee. Saadi brings extensive financial, managerial and real estate experience to the position having been successful both as founder, president and CEO of an award-winning computer services/software/executive search company and then as head of a full-service real estate office in the highly competitive New York City marketplace.

### STAMPEXPO 400

The New York State Hudson-Fulton-Champlain Quadracentennial Philatelic Exposition (StampExpo400) is to be held on the Concourse of the New York State Empire State Plaza, Albany, New York, on September 25th - 27th, 2009. StampExpo400, the dates falling in line with the Hudson-Fulton Celebration of 1909, is going to be the largest philatelic exposition in the U.S. in 2009 and The Royal will be an active participant.

Canadian exhibitors might want to consider exhibiting at this show. Although nothing has yet been announced officially, it is hoped that a Canadian commissioner will be appointed and arrangements to send exhibits could be arranged through the National Office. Watch the May/June issue for more details.

Tom Fortunato, StampExpo 400 Exhibits Chairman, states: "Participation by The Royal at StampExpo 400 has always been a priority for us on the show committee and I am glad that The Royal will officially be a part of this unique event. I have also made sure that we have a Canadian representative on the jury, and I am pleased that John McEntyre of Montreal is joining the team as a judge.

At present, StampExpo400 has a bourse consisting of more than 75 dealers including dealers from France, Canada and Great Britain. Also present will be informational and society booths and over 200 frames of competitive exhibits.

StampExpo400 has received APS sanctioning.

The opening ceremonies will be hosted by Governor David Paterson and his wife, with invitations (from the governors' office) to the Crown-Prince of the Netherlands, nine ambassadors to the U.S. and U.N. as well as U.S. senators and congress(wo)men from New York, mayors from New York City, Albany and Quebec and other politicians.

# CANADA BANK NOTE ENGRAVING AND PRINTING CO. and its Essays

By George B. Arfken, FRPSC

Canada Bank Note Engraving and Printing Co. (CBNEP) was founded in 1882. Figure 1 shows a CBNEP letter heading probably designed to show off the company's engraving and printing capability. The contract to print Canadian stamps, renewable every five years, was held by the British American Bank Note Company (BABN). When BABN's contract came up for renewal in 1886 and 1891, CBNEP became a serious contender for the new contract. Boggs<sup>[1]</sup> discusses this matter but unfortunately while his statements come close they are not quite correct. From a detailed study of the actual contracts and other files of the Canada Bank Note Engraving and Printing Co. in the Canadian Archives, Ryan<sup>[2]</sup> has determined what actually happened. One of the purposes of this article is to present Ryan's conclusions to readers of this magazine.

To persuade postal officials and the Privy Council that CBNEP should have the printing contract, CBNEP produced an amazing variety of essays. There were two styles of plates, one 5 x 5 and one probably 10 x 10 with counters and imprints. Some essays were engraved, some were lithographed. We shall show examples of the 1-cent, 2-cent and 3-cent essays by denomination. Figure 3 shows a 1 cent bottom block of 8 with full imprint. The upside down imprint reads CANADA BANK NOTE ENGRAVING & PRINTING CO. LTD.



Figure 1 (above). Canada Bank Note Engraving and Printing Co. letterhead. Note that the word is "Canada" and not "Canadian." Courtesy: Firby Auctions.

Figure 2 (right). A 2-cent blue die essay on india paper. Courtesy: Maresch Auctions, Simpson collection.



A second purpose is to show readers of *The Canadian Philatelist* some of the attractive essays, in colour, that CBNEP produced in its attempts to win the contract to print Canadian stamps. These are essays, not proofs, because they never did appear as Canadian postage stamps. We start with a die essay in Figure 2. The actual essay, including border, measures 29 x 34 mm.



Figure 3 (above). A 1-cent engraved plate essay, india on card. Courtesy of Maresch Auctions, Simpson collection.



Figure 4 (left). A block of 25 of the 2-cent essays from the mini-plate. This block was printed in yellow-ochre on wove paper. Courtesy of Maresch Auctions, Simpson collection.

The 2-cent essay in the 5 x 5 mini-plate format is shown in Figure 4. The complete pane shows the bottom imprint.

Did Canada want a really blue stamp for UPU mail? The essays shown in Figure 5 demonstrated really blue printing.



Figure 6 shows a counter block of 4 from the 10 x 10 plate.

A remarkable block of 6 is shown in Figure 7. The black overprints at left and extreme top are known as the "running horse."

Figure 8 shows two blocks of 4 reassembled to form a bottom block of 8 with full imprint.

An upper left corner block of 12 of the 3-cent essays is shown in Figure 9. We will take the almost complete imprint to be centered over positions 5 and 6 and extending partially over positions 3 and 7. This means that the plate was 10 stamps wide, probably 10 x 10.

A composite die of 5-cent, 10-cent and 15-cent essays appears in Figure 10. CBNEP wanted to show what they could do for higher values if they were awarded the printing contract.

We cannot set dates to these essays but probably many of them were printed in 1891 when CBNEP was trying to get the printing contract away from BABN. CBNEP had failed in its attempt to win the printing contract in 1886 when the contract was up for renewal. In 1891 they made a very respectable bid for the contract. Despite CBNEP's efforts, Ryan has found<sup>[2]</sup> that the Privy Council granted the contract to BABN. Contrary to Boggs, CBNEP failed again to get the stamp printing contract and the company's fortunes declined. In April 1894 by court order, CBNEP was liquidated. The company's assets were divided into four lots. It was at this point that BABN purchased CBNEP's dies and plates.

The Canada Bank Note Engraving and Printing Co. was no more but, surprisingly, a part of its work lived on. In April 1896, the British Post Office, London informed the Canadian Post Office, Ottawa that the Canadian UPU post card (Webb P4)<sup>[3]</sup> was in contravention to the UPU regulations<sup>[4], [5]</sup>. The Canadian Post Office moved with amazing speed to design and print a new UPU card (Webb P15). For this card, shown in Figure 11, BABN used the CBNEP crowned Queen vignette shown in all of the CBNEP essays. ☒



From top to bottom:

Figure 5. A pair of the 2-cent essays printed in blue on blue wove paper. Courtesy of Maresch Auctions, Simpson collection.

Figure 6. A block of 4 of the 2-cent essays printed in green on India on card. Courtesy of Maresch Auctions, Simpson collection.

Figure 7. A block of 6 of the 2-cent essays, printed in green on a very thin Japanese laid paper. Courtesy of Maresch Auctions.

Figure 8. Two blocks of 4 of the 3-cent essays printed in black (according to the auction catalogue) on thin card. The upside-down imprint ends with an LTD with dots under the T and the D. Courtesy of Maresch Auctions, Simpson collection.



Figure 9. An upper left corner block of 12 of the 3-cent essays printed in pale red on thin card. Courtesy of Maresch Auctions.



Figure 10. The 5-cent, 10-cent and 15-cent die essays together as a composite die essay. Printed in carmine on card, 92 x 43 mm. Courtesy of Maresch Auctions.



Figure 11. P15, the new style UPU card, in accord with the UPU regulations. The crowned Queen vignette was designed by the former Canada Bank Note Engraving and Printing Co. and used in their essays.

#### Endnotes

- [1] *The Postage Stamps and Postal History of Canada, Vol. 1*, Winthrop S. Boggs, Quarterman Publications, Inc., 1945, 1974, pp. 300-301.
- [2] *History of the Canada Bank Note Engraving and Printing Co.*, Christopher D. Ryan, BNA Topics vol. 57, pp. 6-22, Jan.-Mar. 2000. This article may be seen in the Horace Harrison Online Library at [www.bnaps.org](http://www.bnaps.org)
- [3] *Webb's Postal Stationery Catalogue of Canada and Newfoundland*, 7th edition, Editors: Earle L. Covert and William C. Walton
- [4] Ray McLean, *Postal Stationery Notes, Vol. 4, No. 2*, May 1985, BNAPS Postal Stationery Study Group.
- [5] *Early Canada Post Cards*, George B. Arfken, BNAPS 2004. Appendix 6, p. 127.



## JEFF MELSKI

129 Martinglen Crescent, Kitchener, Ontario N2E 2A3  
Email: [jmelski@sympatico.ca](mailto:jmelski@sympatico.ca)

### CANADIAN APPROVALS

A smaller dealer with a personal approach!  
**SPECIAL: HARRIS CANADA ALBUM \$77.00**  
**2 Volume Set - Including 2007 supplement**  
**and all provincial and Newfoundland issues.**

#### SAVE \$\$\$ - SPECIAL OFFERS

	CAT. VALUE	MY PRICE
CANADA #58 VF NH .....	\$1,050.....	\$550 (net)
CANADA #101 VF NH .....	\$750.....	\$415 (net)
CANADA #105 VF NH .....	\$90.....	\$44 (net)
CANADA #130 VF NH .....	\$250.....	\$147 (net)
CANADA #272 VF NH .....	\$37.50.....	\$21 (net)
CANADA #273 VF NH .....	\$82.50.....	\$41 (net)
CANADA #302 VF NH .....	\$70.....	\$39 (net)

I PAY GST AND PST AND ALL SHIPPING CHARGES

**2009 UNITRADE CANADA CATALOGUE...\$42.50 NET**

**WANT LISTS WELCOME**

**- ASK FOR QUOTE ON STAMPS AND EVEN SUPPLIES**

**SAVE SOME CASH, JUST ASK!!**



## Covers and Postal History



Contact us today  
for your FREE  
colour catalogue  
or view it online at

**[www.vanceauctions.com](http://www.vanceauctions.com)**

**VANCE AUCTIONS LTD.**

P.O. Box 267P, Smithville,  
Ontario, Canada L0R 2A0

Toll Free Phone: 1-877-957-3364

Fax: 905-957-0100

[mail@vanceauctions.com](mailto:mail@vanceauctions.com)



# WORDS, WORDS, WORDS,

By Dave Dufour



The other day I read a piece in *TIME* about the publishers of Britain's *Collins English Dictionary* having proposed to cull archaic and rarely used words from their next edition, and this has language mavens up in arms. Examples of such words were given: ... fubsy ... oppugnant ... embrangle ... apodeictic ... caducity. Come on now: can you tell me what they mean? No? Well, I can't blame you, for they might have been Greek for all I knew! But, to satisfy your curiosity, here are their meanings: Fubsy (adj.): short and stout. Oppugnant (adj.): combative, antagonistic or contrary. Embrangle (vb): to confuse or entangle. Apodeictic (adj): unquestionably true by virtue of demonstration. Caducity (n): perishableness.

Being a Churchill fan, I fell to wondering what that great man of letters would have made of this imbroglio. In none of his great speeches, nor in any of his literary works, did he use such outdated vocabulary. He spoke and wrote in plain, understandable English.

Born on November 30, 1874, at Blenheim Palace in Oxfordshire, he was a direct descendant of John Churchill, the 1st duke of Marlborough, hero of the wars against France in the early 18th century. Young Winston was no star pupil in his school days at Harrow. His father then pushed him into a military

career but he had difficulty in passing his entrance exam to attend the Royal Military Academy at Sandhurst. However, once admitted he applied himself and passed 20th out of a class of 130. In 1895 he entered the 4th Hussars and the following year his regiment went to India where he saw service as a soldier and journalist on the North-West Frontier. His despatches attracted such wide attention as to launch him on a career of authorship which he pursued intermittently throughout his life.

Routine army life in India bored him but he put his enforced leisure to good use with a program of reading to repair the deficiencies of Harrow and Sandhurst. In 1899 he resigned his commission to make a living by his pen and to enter politics. On his return to England, he fought a by-election in Oldham, Lancs, as a Conservative but lost by a narrow margin. He then travelled to South Africa to report on the Boer War for *The Morning Post* (London). Within a month after his arrival there he had won fame for his part in rescuing an armoured train ambushed by Boers, although in the process he was taken prisoner. Within a month he escaped from military prison and made his way back to England where he was acclaimed a hero.

I would now like to quote from what he wrote about that conflict:



“Let us learn our lessons. Never, never, never believe any war will be smooth and easy, or that anyone who embarks on that strange voyage can measure the tides and hurricanes he will encounter. The Statesman who yields to war fever must realize that once the signal is given, he is no longer the master of policy but the slave of unforeseeable and uncontrollable events. Antiquated War Offices, weak, incompetent or arrogant Commanders, untrustworthy allies, hostile neutrals, malignant Fortune, ugly surprises, awful miscalculations – all take their seats at the Council Board on the morrow of a declaration of war. Always remember, however sure you are that you can easily win, that there would be no war if the other man did not think he also had a chance.”

(I leave it to your imagination as to who might have benefited from that advice!)

On his return from South Africa he again turned to politics and this time he won a seat in Parliament as a Conservative. But over the years his feelings waxed and waned over many different issues and he jumped from one political party to another. In 1915 he resigned from the Government and returned to soldiering, seeing active service in France as lieutenant colonel of the 6th Royal Scots Fusiliers. In 1916, when his battalion was merged, he did not seek another command but instead returned to Parliament as a private member.

There followed a tumult of political intrigues and in 1917 he was appointed Minister of Munitions in the face of a storm of Tory protest. But in that capacity he was responsible for the development of the tank that broke through the deadlock on the Western Front.



Paradoxically, it was not until the war was over that Churchill returned to a service department.

In 1919 he was named Secretary of War, charged also with the responsibility for the Royal Air Force.

Here I would again like to quote what he wrote about the World War I conflict:

“When the terrible German armies, which had held half Europe in their grip, recoiled on every front, and sought armistice from those upon whose lands even they stood as invaders; when the pride and willpower of the Prussian race broke into surrender and revolution behind the fighting lines; when that Imperial Government, which had been for more than fifty fearful months of terror of almost all nations, collapsed ignominiously, leaving its loyal faithful subjects defenceless and disarmed before the wrath of the sorely wounded, victorious Allies, then it was one corporal, a former Austrian house-painter, who set out to regain it all.”

In 1921 he moved to the Colonial Office where he was faced with multiple problems, like the Middle East conflict between the Arabs and the Jews, the conflict of Irish Home Rule and then the Turkish resurgence threatening to retake the Dardanelles neutral zone. This combination of headaches brought down the shaky coalition government and poor Churchill suffered a sudden attack of appendicitis just before the elections. Needless to say, he lost his seat. He thus found himself, as he said, “all at once, without an office, without a seat, without a party, and even without an appendix.”

In convalescence and political impotence Churchill turned to his brush and his pen. His painting never rose above the level of a gifted amateur but his writing once again provided him with the financial means that his independent brand of politics



required. He remained in the political wilderness until March of 1939 when he and his group pressed for a national coalition and at last the sentiment in the country recognized him as the nation's spokesman. He began to agitate to reclaim a political office. As long as peace lasted, Chamberlain ignored all such persuasions but on September 3, 1939, when Britain declared war on Nazi Germany, Prime Minister Chamberlain appointed Churchill to his old post in charge of the Admiralty. The signal went out to the fleet: "Winston is back!" On September 11, 1939, Churchill received a congratulatory note from President Roosevelt and he replied over the signature "Naval Person".

The German invasion of the Low Countries, on May 10, 1940, was a hammer blow. Chamberlain resigned and wanted Lord Halifax, the Foreign Secretary to succeed him. Halifax wisely declined and it became obvious that Churchill alone could unite and lead the nation. A coalition government was formed, headed by Churchill, who declared: "I was conscious of a profound sense of relief. I felt as if I was walking with destiny, and that all my past life had been but a preparation for this hour and this trial."

On May 13, Churchill faced the House of Commons for the first time as Prime Minister. He warned members of the hard road ahead - "I have nothing to offer but blood, toil, tears and sweat."

When he addressed the House again on June 4, 1940, this is what he had to say: "We shall not flag or fail. We shall go on to the end. We shall fight in France, we shall fight on the seas and oceans, we shall fight with growing confidence and growing strength in the air, we shall defend our island, whatever the cost may be, we shall fight on the beaches, we shall fight on the landing grounds, we shall fight in the fields and in the streets, we shall fight in the

hills, we shall never surrender."

Imagine the impact of such words on a nation with its back to the wall, stunned by Dunkirk and awaiting a German invasion!

And then:

"Let us therefore brace ourselves to our duties, and so bear ourselves that, if the British Empire and its Commonwealth lasts for a thousand years, men will still say "This was their finest hour!"

The Battle of Britain followed and in eloquent homage to the valiant members of the Royal Air Force, Churchill told the House of Commons on August 20, 1940, "Never in the field of human conflict was so much owed by so many to so few,"

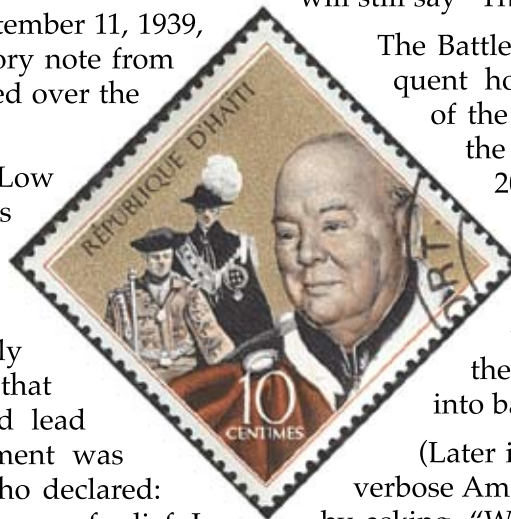
Truly, as John F. Kennedy would later say, "He mobilized the English language and sent it into battle."

(Later in life, discussing oratory with a verbose American, Churchill made his point by asking, "What if I'd said - instead of "We shall fight on the beaches - "Hostilities will be engaged with our adversary on the coastal perimeter?) Touché.

Churchill always believed in calling a spade "a bloody shovel" so that everyone would understand exactly what he was saying (or writing) in plain, bloody English!

I believe that I've made my point about the use of language, but I just can't refrain from finishing off my spiel about Sir Winston Spencer Churchill before I sign off.

As we all know (or least those of us who are old enough to know), Winston saw the Western World through to Victory in World War II. Sadly, after that, he was rejected by the electorate to



form a new post-war Government. This was a bitter blow to him, but, like the Phoenix, he rose out of the ashes of defeat to win the next election in 1951 and he became Prime Minister for the second time.

The year 1953 was in many respects a most gratifying one for Churchill. It brought the coronation of Queen Elizabeth II, which drew out all his love of the historic and symbolic. He received two notable distinctions: he was invested with the Order of the Garter and he received the Nobel Prize for Literature.

But he had been carrying too heavy a load and on July 27, 1953, he collapsed with a sudden stroke. However, by October he was back at work and his 80th birthday, November 30, was the occasion for a unique, all-party ceremony of tribute and affection at Westminster Hall. On April 5, 1955, he resigned and despite laying down the burden of office, amid the plaudits of the nation and the world, he remained in the House of Commons (declin-

ing a peerage) to become "father of the house" and lived to contest and win another election in 1959. He also published another major work, *A History of the English-Speaking Peoples*.

On April 9, 1963, he was accorded the unique distinction of having an honorary United States Citizenship conferred upon him by an Act of Congress.

His health continued to decline and death came at his London home on January 24, 1965. He was accorded a state funeral where nearly the entire world paid its tribute. He was buried in the family grave in the Bladon churchyard in Oxfordshire.



To the best of my knowledge, Churchill was never a stamp collector so he might have had a problem with the philatelists' language had he attended a stamp club meeting and listened in on a conversation about freaks and oddities. There are expressions that have floored even me; for example, "Slime holes". Do you know what they are? But just as Winston enjoyed painting, I enjoy my philatelic hobby! To each his own! ☒

**Vincent Graves Greene  
Philatelic Research Foundation**  
*Canada's Premier BNA Expertizing Service*

**NEW PUBLICATION**  
– Illustrated in Full Colour

**The Pence Covers of Nova Scotia  
& New Brunswick 1851-1860**

by George Arfken, FRPSC & Charles G. Firby

- Over 300 pages • 8½ x 11 format • hardbound
- \$115 CAD if posted to a Canadian Address
- \$115 USD if posted to an International Address

Order from:

Vincent Graves Greene  
Philatelic Research Foundation  
10 Summerhill Avenue  
Toronto, Ontario, M4T 1A8 Canada  
Ph: 416.921.2073  
vggfoundation@on.aibn.com  
www.greenefoundation.ca



**Vincent Graves Greene  
Philatelic Research Foundation**

*Canada's Premier BNA Expertizing Service*

**TWO NEW PUBLICATIONS**

Each illustrated in Full Colour; 8 ½ x 11 format; hardbound  
See website or contact Foundation for more detail

**The Large Queen Stamps  
of Canada and their Use,  
2<sup>nd</sup> edition**

By H.E. & H.W. Duckworth

over 400 pages; 80 in colour;  
updated and expanded  
information on each value.

All values analyzed through  
full period of use including  
shade varieties

**\$125 Cdn. plus shipping**

**Canada's Postage Stamps  
of the Small Queen Era  
1870-1897**

by J. Hillson & J.E. Nixon

over 240 pages; 170 in colour;  
proofs, issued stamps, plates,  
shades, re-entries, uses.

Includes Small Queens, Widow  
Weeds, and 1891 Canada Bank  
Note Co. essays

**\$150 Cdn. plus shipping**

Order from:

[www.greenefoundation.ca](http://www.greenefoundation.ca)

**VINCENT GRAVES GREENE  
PHILATELIC RESEARCH FOUNDATION**

10 Summerhill Ave., Toronto, Ontario, M4T 1A8, Canada  
Ph. 416-921-2073 Email: vggfoundation@on.aibn.com

# ROYAL PHILATELIC CONVENTION COMES TO ST. CATHARINES IN 2009

*By Skip Gillham*

Two significant anniversaries will be noted in 2009: It will be 180 years since the first Welland Canal started operations and 50 years since the massive St. Lawrence Seaway project opened the Great Lakes to the large ships of the world.

The St. Catharines Stamp Club of St. Catharines, Ontario, will host the 81st Convention of the Royal Philatelic Society of Canada in 2009. The three-day event will run from Friday June 12 through Sunday June 14 and is being held at the Parkway Convention Centre, 327 Ontario Street, St. Catharines, Ontario, L2R 5L3.

St. Catharines is known as The Garden City and is located on the south shore of Lake Ontario between Hamilton and historic Niagara Falls. The city owes its early development to the proximity to the Welland Canal that bypasses the thundering cataract of Niagara Falls. Over the years four man-made waterways have linked Lake Erie and Lake Ontario, enabling ships to travel between ports on both lakes.

The first Welland Canal had 40 wooden locks beginning at the Lake Ontario entrance of Port

Dalhousie, and followed the Twenty Mile Creek (which runs just behind the Parkway Convention Centre) to the Chippewa Creek and on to the Niagara River, and then to Lake Erie. The current of these waterways made some trips difficult and an extension channel, directly to Lake Erie at Port Colborne, was opened in 1833.

Whopping cargoes of up to 160 tons could move through the First Canal. Twenty-seven new stone locks replaced the original ones by 1850 and this enabled bigger ships and larger payloads to journey between the two Great Lakes.

The Third Canal, built to conform to the lock sizes of the canals linking Lake Ontario and the St. Lawrence at Montreal, was opened in 1887 and 26 stone locks now lifted the ships up the Niagara Escarpment.

A new, and much larger canal, was being planned as early as 1912 but it was not officially opened until August 6, 1932. Eight concrete locks would carry the largest lakers the 99.4 metres (326 foot) elevation between the two lakes. Vessels can transit the approximately 26 miles (42 km) in about 12 hours.

The St. Lawrence Seaway, which opened on April 25, 1959, has seven locks and they conform to the length of the Welland Canal locks. Now ships up to 740 feet (225.55 metres) long by 78 feet (23.77 metres) wide can handle millions of dollars' worth of cargoes in a single trip, delivering over 25,000 tons or 1,000,000 bushels of grain.



Figures 1 (above) and 2 (below).





Clockwise (from top left): Figure 3, Figure 4, Figure 5.



Canada and the United States jointly issued commemorative postage stamps in 1959 recognizing the completion of the St. Lawrence Seaway (figure #1) and a joint 25th anniversary issue on 1984 (figure #2). In 1974, Canada Post issued an 8-cent commemorative stamp honouring William Hamilton Merritt (figure #3), the driving force behind the First Welland Canal, as part of the 150th Anniversary of the beginning of canal construction.

A 30-cent stamp recognizing the Royal Canadian Henley Regatta (figure #4) was issued in 1982. This world-class rowing event is held annually on Martindale Pond, the open body of water above Lock 1 of the first three canals at Port Dalhousie. In 1999 the 23rd World Rowing Championships were held on the same pond commemorated by a 46-cent stamp (figure #5).

Then, in 1996, Canada issued four, 45-cent stamps honouring technology (figure #6). The Great Lakes freighter LOUIS R. DESMARAIS (illustration) was featured on the Transportation stamp in the set. This vessel is still around. It was rebuilt at Port Weller Dry Docks in St. Catharines during 2000-01 and now sails for Canada Steamship Lines as CSL LAURENTIEN. It often passes through the current canal carrying coal to the Steel Company of Canada in Hamilton.

Finally, in 1987, a 36-cent stamp, from a set of four on historic Canadian shipwrecks, recognized the vintage naval ships HAMILTON and SCOURGE that rest on the bottom of Lake Ontario near St. Catharines (Figure #7).

Visitors to the ROYAL\*2009\*ROYALE are not far from the remnants of the three old canals. The Port Dalhousie entrance is near the start of Ontario Street. The St. Catharines Museum and Viewing Centre are located at Lock 3 only a few minutes, and

two exits, east on the Queen Elizabeth Highway.

A variety of evening entertainment in the area includes the spectacular Niagara Falls, Casino Niagara and dramatic theatre productions at Niagara-on-the-Lake. There is no shortage of places to eat, including a fine restaurant at the Convention Centre.

The St. Catharines Stamp Club looks forward to hosting this event and welcoming philatelists from across the continent.

The convention has a \$2.00 admission charge (\$5.00 for the entire weekend) and there is ample free parking. Over 40 International Dealers are expected. There will also be a Youth Area, Seminars and a Sunday Afternoon Auction conducted by Longley Auctions. ☒

For more information check <<http://royal2009.ca>>

*Note: This article was prepared by marine historian Skip Gillham for the sole use of the Royal \* 2009\* Royale Philatelic Committee.*



Figure 6.



Figure 7.

# WANTED

**We can sell your Canadian or foreign stamp collections or accumulations on consignment for the nominal fee of 10%.**

*Please enquire before forwarding material.*

R.F. NARBONNE, FRPSC, OTB

Telephone 1-613-278-1555

Call Toll Free 1-800-247-5619

(Canada Only)

## **GREENWOOD STAMP COMPANY**

PO Box 102  
McDonalds Corners,  
Ontario K0G 1M0

– *Since 1962* –

# CANADA'S MAP STAMP:

## Investigating the Island Names

*By Orville F. Osborne*

The 2006 Xmas card I received from the president of our Map Stamp study group, Fred Fawn, featured a fascinating depiction of the Map Stamp in a motif which I did not readily recognize. Amid the usual festivities surrounding the jovial occasion I did not immediately pursue the origin of the illustration and it wasn't until I came across a sales catalogue featuring the stamp design once more on its cover that I began to pursue the origin and the source of the item.

The item, as displayed on the cover of the catalogue, was there for the purpose of promoting one of the items up for auction. This item, being the entire production file for the Map Stamp from the America Bank Note Archives, was described as featuring the original map, essays, die proofs and proof sheets of the two typographic zinc plates as well as a damaged mock-up of the sheet layout.

Subsequent discussions with President Fred regarding his Xmas card confirmed that indeed the item featured on his postcard was the same item as the one depicted on the cover of the catalogue and related to the prototype stamp produced by the America Bank Note Company immediately prior to the final Map Stamp design being placed in production.

As can be seen from the print produced below, the subject stamp which, for the purpose of this article, is referred to as being "Neptune's Spears" was virtually identical in all respects to the final stamp produced except for the elimination of the spears and the related writing as well as the location of "XMAS 1898" including various names on the land masses and oceans as well as the numerous traffic lanes.

The notations on the Map Legends regarding the colouring indicates that the red areas shown on this map indicate the land masses which were British Possessions and are reasonably inclusive of those used to define the British Empire on the final edition with the exception of the various island groups and parts of the redefined African possessions.

However, when one examines this particular map in detail it seems reasonable to conclude that this was the prototype used for the final engraving of the die from which the Map Stamp was ultimately

produced and when I compared actual overlays compiled with copies of the Map Stamp it was very difficult to locate many variations.

The actual map from which this reduction was produced was:

THE BRITISH EMPIRE MAP OF THE WORLD ON MERCATOR'S PROJECTION BY G.R. PARKIN AND J.G. BARTHOLOMEW.

It is not clear who G.R. Parkin was however research on John Bartholomew suggests that he was clearly the map maker and was credited with having popularized the familiar layer colouring on maps in which low ground is shown in shades of green and higher ground in shades of brown, then eventually purple and finally white.

The colour scheme is not too apparent when one examines the subject stamp however there was also some suggestion that the Bartholomew company was the first to adopt pink as the colour for the British Empire as well as being credited with initiating the use of the name 'Antarctica' for that area of the southern hemisphere. Thus, we may have the reason for the red of the British Empire as shown on the final issue of the Map Stamp.

The most obvious deficiency regarding the utilization of this stamp as the final pattern for the Map Stamp is the absence of the markings within the Pacific and the Indian Oceans as to those Island Groups. There are definite markings indicating Singapore, Borneo and New Guinea as well as a splash of red for the area where Fiji is indicated. Additionally, Ascension and St. Helena are clearly marked as well as Gibraltar, Cyprus and Malta.

This then leaves one to wonder how the selection was made for locating where the dots would be placed to identify those items we now refer to as the Pacific Island Group and the Indian Ocean Group.

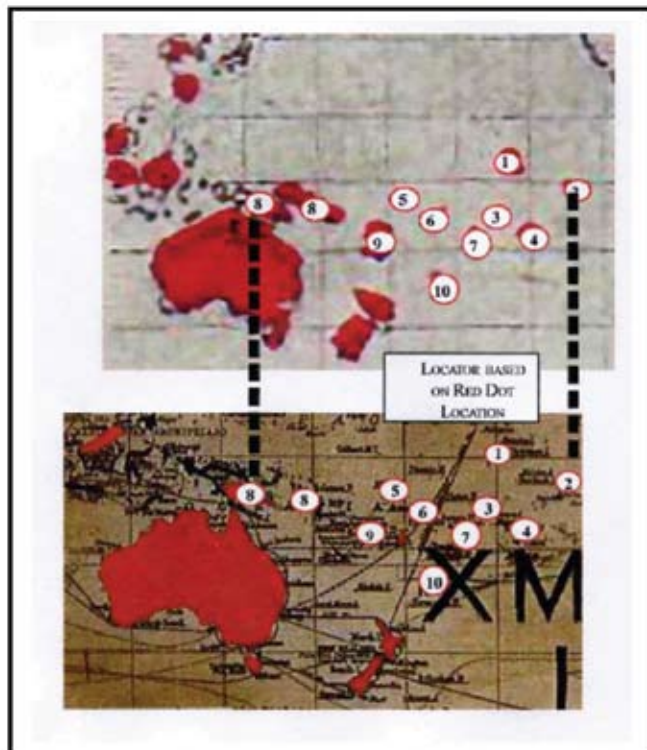
What would seem a reasonable assumption is that someone with geographical knowledge of the area and cartography experience might have been asked to indicate on the copy of a map (from which

“Neptune’s Spears” were compiled) the various areas where it would be reasonable to place the appropriate marks. Perhaps this task was undertaken by Sir William Mulock himself or one could also assume that Mulock, in conjunction with Sandford Fleming, completed the task at hand.

In any event, the marks which were placed in the various areas have left us to ponder the names assigned to the dots.

The first step in establishing a comparison of the two subject stamps and the relevant island locations to derive a comparable location on the “Neptune” stamp was to create a large template of that portion of each stamp where the Pacific Island Group were located.

The illustrations below demonstrate those portions of the map which were developed for this exercise.



**SEGMENTS OF MAP USED FOR NAMING**

Once the areas had been selected, a method for transferring the pattern of the Pacific Island Group from the Map Stamp to the “Neptune” stamp was devised. Utilizing a computer graphics programme, circles were placed on each of the various islands comprising the Pacific Island Group and a pattern was created which was then transferred to the corresponding area selected from the “Neptune’s Spears” Stamp.

(NOTE: It was interesting to note that in completing the process of marking the islands with the circles it appeared that the architects of the Map Stamp Die had moved New Zealand closer to Australia than the distance which was reflected on the map itself.)

The illustration above provides the graphics of how this process was achieved.

**LOCATING THE ISLANDS ON EACH MAP**

Having located the Islands on the smaller version of the Map which was used to create “Neptune’s Spears” a larger version was then consulted in order to determine which Islands were at the relevant locations on the map itself. The thinking was that the architects



**NEWFOUNDLAND SPECIALIZED STAMP CATALOGUE**

- 7th edition 2010

With BNA Colonies: N.B., N.S., B.C., P.E.I.,  
Classic Canada to 1951

Stamps • Varieties • Postal Stationery  
Airmails • Postal Rates

Colour • Spiral Bound  
630 pages of detailed information

Can\$ 122

(Can\$ 145 - shipped Xpresspost for North America,  
Int'l Airmail for World) • Visa • MC

1-709-685-0560 • [www.nfldstamps.com](http://www.nfldstamps.com)  
9 Guy St., St. John's, Nfld. Canada A1B 1P4





of the die which was used to print the red dots on the Map Stamp ultimately may possibly have used this map to provide the original source.

The Grid, as prepared from the Map Stamp, was locked as a group to ensure that none of the locations would shift relative to each other. The grid was then transferred to the appropriate segment of the stamp from the "Neptune" stamp. What this revealed was that the various islands were not in appropriate locations.

As an example, when the circle noted as # 8 was placed over Fiji, which seems the most logical match, none of the remaining dots matched; nor did they even come close. The next choice was to match the # 8 circles with New Guinea which produced the most logical configuration except that Fiji now became # 6 and the #10 was then on the north Island of New Zealand.

Many more anomalies occurred as the grid was moved among the various identified locations and what became readily apparent was that the Map Stamp designers had appeared to use some very broad artistic license in locating the red dots for the Pacific Island Group.

The reason for utilizing this strategy is reasonably obvious when one looks at the map which the architects worked from and the many islands which were grouped so close together, and in a very haphazard arrangement.

At this juncture it was decided there would have to be some rationale utilized to determine which islands were intended to be represented as part of the British Empire in the Pacific. There are many conflicting areas cloaked in red on the Map Stamp and it is obvious that there was a strong political motivation to reflect as large and powerful a British Empire as was feasible for purposes of pure propaganda. The Islands in the Pacific were switching loyalties between Germany, France and Great Britain as well as Spain with great alacrity in the latter 19th century.

It was, therefore, quite feasible that the authors and architects of the Map Stamp allowed themselves some liberal interpretation as to what would be placed in this otherwise large empty blue space on the stamp.

There was also a very large political football being bantered

about and substantial monetary gains were to be anticipated if the Pacific Cable could be completed to Australia and through Indonesia to India.

This probably added more fuel to the desire to fill in that great blue void on the stamps which represented the Pacific Ocean. Bearing this in mind, a list was prepared utilizing the prepared grid of numbered dots as a guide to span any and all islands on the map which may have been under British affiliation in 1896.

Utilizing this list, appropriate names were attached to likely locations for the representative islands.

The following are assumptions made as a result of this exercise.

1. **Gilbert Island (although eventually linked to Ellice - no other fit)**
2. **Christmas Island**
3. **Ellice Island (although eventually linked to Gilbert - no other fit)**
4. **Easter Island (while further east seems most obvious)**
5. **Salomon Island**
6. **Fiji ?? (fits here, but the two dots in nine confuse the issue)**
7. **Samoa**
8. **New Guinea  
New Hebrides**
9. **Fiji (two dots should be at dot 6 but probably too large)**
10. **Tonga**

Rather than clarify the names for Pacific Island Group this study probably adds to the already expansive list of Pacific Island names which at last count totaled at least five different versions. However, it may offer a rationale for the original location of the dots. ☒

## **AN INVITATION TO JOIN THE CANADIAN PHILATELIC SOCIETY OF GREAT BRITAIN**

Nearly half our members come from your side of the pond.

They enjoy our quarterly award-winning magazine, 'Maple Leaves'.

Some of them come to our annual convention.

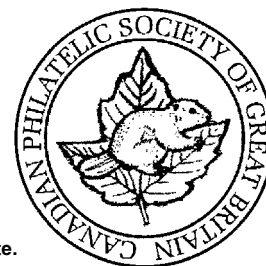
The 2009 Convention will be held in Welwyn Garden City, Hertfordshire from September 23-26.

They can find interesting material amongst the many hundreds of lots that are available at the two auctions we hold each year.

*Are you missing out?*

**For more information write to the Secretary:  
John Wright, 12 Milchester House, Staveley Road,  
Meads, Eastbourne, East Sussex BN20 7JX or visit our website.**

SUBSCRIPTIONS PAYABLE IN CANADA



www.canadianpsgb.org.uk

# NOMINATION OF DIRECTORS

The following members of The Royal Philatelic Society of Canada have been nominated to serve as Directors for a two-year period, from 2009 to 2011. Nominees are listed in alphabetical order. In compliance with the by-laws of the Society, short biographies of the nominees are included. A proxy form is included in this issue for the use of those unable to attend the Annual General Meeting.



## FRANK ALUSIO, FRPSC • Etobicoke, ON

Frank's professional activities were performed in the areas of architecture, planning, management, and airports transfer. As a manager, he was the Coordinator for the 1988 United Way Campaign. He was also a member of the Organizing Committee hosting and staging the 1994 Airport Council International Conference and World Exhibition in Toronto with the participation of 2,000 delegates from the world.

His skills have been directed to not only getting everybody rowing in the same boat, but rowing in the same direction.

Philately is an activity Frank has diligently pursued all his life – collecting, exhibiting and judging at all levels. He is currently West Toronto Stamp Club President, Editor of the Newsletter and Chairperson of the annual stamp competitions.

He is a frequent contributor to *The Canadian Philatelist* and the recipient of the Geldert Medal. He is a Life member of The RPSC since 1979 as well as a Fellow.

Frank was one of the founding members of the Greater Toronto Area Philatelic Alliance and past Editor of *PhilaJournal*. He has served on:

- The RPSC, two-year term as Director.
- The CAPEX '96 Organizing Committee as the International Service Coordinator and Exhibition Floor Manager.
- The FIP Thematic Commission as the Canadian Delegate.

In 2004, Frank introduced the Single-page exhibit with basic written guidelines. The initiative proliferated to other clubs and other Provinces. The rest is history.

While Frank has extensive experience in many established areas of the hobby, he came from a simple background (both as a collector and as an individual). He has never lost the perspective or enthusiasm of the average collector and feels that voice needs to be heard on the Board. He also feels that his philatelic leadership roles at various levels over the years will enable him to approach the issues facing the Society with a well rounded perspective.

Frank looks forward to taking a serious role in serving the Society.



## FRANÇOIS BRISSE • Beaconsfield, QC

François Brisse, né à Paris (France) en 1935, a résidé à Bordeaux jusqu'à l'âge de 20 ans. Il a obtenu le diplôme d'ingénieur chimiste à la suite de ses études à l'Université de Bordeaux. En 1962, ayant émigré au Canada, à Halifax, il y a obtenu un doctorat en chimie de Dalhousie University. Il est présentement professeur émérite de l'Université de Montréal. Il a épousé Seana Hanrahan, une belle haligonienne, et ils ont eu deux enfants.

François Brisse collectionne les timbres depuis l'âge de 10 ans. Ses domaines d'intérêts comprennent : l'histoire postale du Canada, de France et de Grande-Bretagne, ainsi que les collection thématiques sur les minéraux, les ballons à air chaud, les terres polaires et les émissions conjointes.

En 1984 il avait organisé une exposition internationale sur la chimie et la philatélie dans le cadre d'un congrès de chimie à Montréal. Il était responsable des publications de l'exposition Canada 84. Il a été rédacteur en chef de la revue *Philatélie Québec* de 1987 à fin 1993. Depuis plus de 10 ans, il rédige pour *Philatélie Québec* une chronique régulière sur les Marques Postales du Canada. Il est aussi le rédacteur du bulletin *Philagems International* de l'American Topical Association.

Il a rédigé la section *Balloon Mail* du volume *The Air Mails of Canada and Newfoundland* édité par l'American Air Mail Society en 1997. Il a écrit plusieurs articles de recherche pour les Opus de l'Académie québécoise d'études philatéliques portant sur les oblitérations des grands objets plats au Canada. Son plus récent travail de recherche (en cours) porte sur le recensement et la rédaction d'un volume sur les oblitérations illustrées du Canada.

Présentement il est le président sortant du Club philatélique du Lakeshore et président de l'Académie québécoise d'études philatéliques. Il a été nommé membre d'honneur de l'Académie européenne de philatélie. François Brisse est un des directeurs de la SRPC et il assure la liaison avec la Fédération québécoise de philatélie. Il est juge accrédité au niveau régional. Il a été nommé Fellow de la Société royale de philatélie du Canada en 2006.

# NOMINATION DES DIRECTEURS

Les membres suivants de La Société royale de philatélie du Canada sont présentés pour élection comme directeurs, pour un terme de deux ans, de 2009 à 2011. Les candidats sont présentés par ordre alphabétique. Selon les statuts de la Société, une biographie des candidats est incluse. Une procuration est incluse pour tous ceux qui ne pourront pas assister à l'assemblée générale annuelle de la Société.



## JJ DANIELSKI • Toronto, ON

Born in Poland, in 1946 JJ immigrated with his family to Canada as a political refugee. A lawyer and university professor in Poland, in Canada he established himself as a financial advisor, presently semi-retired.

JJ's involvement with organized philately started in 1959 when, at age 13, he joined a youth philatelic club. He started exhibiting at a national level at age 15 and at an international level at age 16. In 1961, JJ published his first philatelic article. Before leaving Poland, he managed to publish approximately 50 philatelic articles, some of them in German and Czech.

After immigrating to Canada, JJ not only continued publishing philatelic articles and exhibiting but also got involved in other philatelic activities. He received his national accreditation in philatelic judging and literature and in 2004, an international accreditation in postal history. Currently he is in the process of obtaining an international cross-accreditation in literature.

A few years ago, JJ got involved in international philatelic organizations. Currently he chairs the FIAF Postal History Commission and is Secretary to the FIP Commission for Postal History as well as the Canadian Delegate to the FIP Commission for Postal Stationery. He has also co-represented the Royal Philatelic Society of Canada at the two recent FIP Congresses in Malaga and Bucharest.

JJ's current activities include the Palmares column in *TCP* (since 2005) and writing for various philatelic journals. His extensive studies on WWII internment of Polish servicemen in Latvia and Lithuania published in the American Congress Book were awarded the best postal history articles in 2007 and 2008.

In the first year of his term as member of the board of the RPSC, JJ took on the task of going through the board minutes for the most recent 10 years and summarizing reports to and the decisions of the board. This document presented to the RPSC President was distributed to board members prior to the 2008 convention, allowing them to gain a better understanding of some of the issues faced by the RPSC now. JJ spent the second part of his term as a member of the management team being involved in the assessment of the current activities of the RPSC and strategic planning for the next several years.

There are several issues which require an innovative approach and JJ plans to do his best in re-orienting the practices that have to date not produced the expected results.



## DAVID G. JONES • Nepean, ON

David G. Jones is a semi-retired public sector executive who now spends his time consulting, writing, and managing his collections. He is a specialist in Canadian postal ephemera and stamp collaterals (new issue documents, launch covers, etc.). David writes mainly for the management press but he has published in *Canadian Stamp News*, *The Canadian Philatelist*, *BNA Topics* and the journal of the *American Society for Philatelic Pages and Panels* (ASPPP), where he is a member of the Board of Directors. He is a member of BNAPS, the Ottawa Philatelic Society, Nova Scotia Stamp Club, CFPS and the Virtual Stamp Club. David holds an M.A. from Dalhousie University. He is a Fellow of the University of King's College, Halifax and a recipient of the Queen's Jubilee Medal. Residents of Ottawa, David and Ena Gwen have three grown children. They celebrated their 40th wedding anniversary last year.



## DAVID OBERHOLTZER • Waterloo, ON

David Oberholtzer has collected stamps since the age of 12 and been a member of the "Royal" since 1969. He served the Society as Treasurer for five years (1993-1998) and was on the organizing committee for CAPEX 96. He is also member of The Postal History Society of Canada, the Philatelic Specialists Society of Canada and the Kitchener-Waterloo Philatelic Society.

David is a fellow of the Society of Management Accountants of Canada and a Past-President of the Society of Management Accountants of Ontario.

His philatelic interests include Canadian Postal History (specifically Barrel cancels of the Elizabethan Era, postmarks of several townships in Huron County and Mute Cancels of Canada), and pre-independence Jamaica.

David is retired and resides with his wife Anne in Waterloo Ontario.



**MICHAEL QUEALE • London, ON**

After retiring from careers in the Canadian military and the federal Public Service, my wife Judith and I are now living in London, Ontario.

A founding member of the Canadian Forces Philatelic Society (CFPS), I have remained active in various positions over the past 33 years and currently serve as treasurer and auctioneer.

The collecting bug bit me as a pre-teen. A favourite uncle passed me a small world-wide collection and the rest, as they say, is history. Although I still have to fight the urge to collect stamps world-wide, my focus has narrowed in recent years. Today, my activity is centred on the Isle of Man (my heritage), France (my youth), RCAF (my first career), Great Britain (Wildings) and Canada (Centennials & phosphor tagged definitives).

I am the past treasurer for the Middlesex Stamp Club, a member of the London Philatelic Society, the Vancouver Island Philatelic Society, BNAPS, APS, RPSC and have exhibited at the national level.

Most recently I served as the co-chair & treasurer on the organizing committee for ROYAL\*2005\* ROYALE and currently serve on the Board of Directors of two not-for-profit organizations.



**GEORGE PEPALL, FRPSC • Kitchener, ON**

I grew up in Toronto, studied Classics at Trinity College, U. of T. and became a high school teacher in Kitchener-Waterloo. I taught English and Latin for 32 years full-time, seven years part-time, serving as English Head at Waterloo Collegiate for my last eight full-time years.

My interests beyond stamps include tennis, skiing (both types), duplicate bridge, live music, trying to play the piano, and Blue Jays baseball.

My volunteer service has drawn me to student debate for 35 years (national president 1998-2004); local church council (since 1978); minor soccer (five years) and minor baseball (eight years). I'm married and have two adult children.

A stamp collector since the age of five, I have been involved in the hobby in a gradually increasing number of ways. I still have and use preprinted albums, but have an eager zest for any engraved stamp of any country.

I hope to do more in exhibiting and judging, but for now my work with the Management Committee of The RPSC and with my local club are diverting me from those important pleasures. I'm a firm believer that stamps become a means to an end of making new friends and sharing fellowship in our community and across Canada. It's through national hobby organizations like ours that we can fully appreciate our wonderful country. I am excited about the promise that the future holds for The RPSC and for stamp-collecting in Canada.



**W. JOHN SHEFFIELD • London, ON**

I'm running for a second term as Director.

At the annual meetings in Quebec during the 2008 Convention I became a member of the RPSC Management Committee. President Rick Penko, through his past columns in this magazine, has made reference to the work the Committee has undertaken over the past 10 months, specifically the development of a strategic plan for our organization.

I'm excited about the new directions available to the RPSC and seek your support for my re-election in order to assist in moving the organization forward.

My professional career spanned four decades in the fields of human and organizational performance improvement. During that time I directed various projects aimed at improving productivity, corporate effectiveness, and human competence. I believe this experience will provide ongoing benefit to the RPSC as the new direction unfolds.

Many of you may know me now as a stamp dealer. It was my father who introduced me to stamp collecting at a young age. Dad and I shared the hobby for many years. It is a hobby I am enjoying passing on to my grandchildren. My collecting interests include Canada cancellations plus a variety of topicals. My exhibits have been awarded gold at both the local and national level. In addition to my collecting interests I was co-chair for each of the successful Royal\*2005\*Royale held in London, Ontario and Royal\*2007\*Royale held in Toronto, Ontario. In addition to my RPSC membership I am also a member of the APS, BNAPS, CSDA, and CPSGB.

There is much work to be done. If elected I would like to help positively influence the changes that must occur for the hobby to grow and survive.

**COMING SOON!**

**Keep a lookout for *The Canadian Philatelist's* new page dedicated to dealer and auction house Web site address listings, and more, for as low as \$10.00 per issue.**

# THE ROYAL PHILATELIC SOCIETY OF CANADA – PROXY

## LA SOCIÉTÉ ROYALE DE PHILATÉLIE DU CANADA – PROCURATION

The undersigned member of The Royal Philatelic Society of Canada hereby appoints Margaret Schulzke, Executive Assistant at the National Office of The RPSC, Toronto, Ontario, as the Proxy of the undersigned to attend and act for and on behalf and in the name of the undersigned at the Annual General Meeting of the Society to be held in St. Catharines, Ontario, at the hour of 10:00 a.m. on Saturday, June 13, 2009, upon any and all matters that may properly come before said meeting, or any adjournments thereof, the undersigned hereby ratifying and confirming all that the said Proxy may do by virtue thereof. The Proxy will vote:

Le membre sous-signé de La Société royale de philatélie du Canada désigne Margaret Schulzke, Adjointe exécutive, Bureau national de SRPC, Toronto, Ontario, pour agir par procuration pour le (la) sous-signé(e) en assistant et en agissant pour le (la) sous-signé(e) à l'assemblée générale annuelle de la Société qui se tiendra à St. Catharines, Ontario, à 10 heures, samedi le 13 juin, 2009 sur tous les items qui seront légalement présentés à la dite assemblée, ou à tout ajournement de celle-ci, le (la) sous-signé(e) ratifiant et confirmant tout ce que la procuration à la droit de faire en vertu de celle-ci. La personne agissant par procuration votera:

1. To approve the election of eight (8) Directors, each of whom has been properly nominated according to the Society's by-laws to serve a two-year term of office ending at the Annual General Meeting in 2011:

1. Pour approuver l'élection de huit (8) directeurs, la candidature de chacun d'entre eux ayant été légalement faite selon les règlements de la Société pour un terme de deux (2) ans se terminant à l'assemblée générale de 2011:

<input type="checkbox"/> ALUSIO, Frank Etobicoke, ON <input type="checkbox"/> BRISSE, François Beaconsfield, QC <input type="checkbox"/> DANIELSKI, JJ Toronto, ON <input type="checkbox"/> JONES, David Nepean, ON	<input type="checkbox"/> OBERHOLTZER, David Waterloo, ON <input type="checkbox"/> PEPALL, George Kitchener, ON <input type="checkbox"/> QUEALE, Michael London, ON <input type="checkbox"/> SHEFFIELD, W. John London, ON
--	--

2. To appoint auditors of the Society.  
 3. To approve the actions of the officers and Directors since the last Annual General Meeting of members.

2. Pour designer une firme comme vérificateurs de La Société.  
 3. Pour approuver les actions des officiers et directeurs depuis la dernière assemblée générale annuelle des membres.

Dated this / Datée le \_\_\_\_\_ day of / jour de \_\_\_\_\_, 2009.

RPSC Member Number / Numéro de membre de La SRPC \_\_\_\_\_

Signature of Member / Signature du membre \_\_\_\_\_

**Instructions:**

You may vote for a maximum of eight (8) from the candidates listed above by marking an "X" in the box next to their names. If you do not wish to vote for the entire slate you may select the candidate(s) of your choice by marking an "X" in the box beside the name(s) of those candidate(s) you wish to elect. If your ballot is not spoiled, the proxy will vote in favour of those stipulated with your "X".

Mail or fax no later than 5:00 p.m. EST on May 29, 2009 to:

**RPSC National Office, P.O. Box 929,  
 Station Q, Toronto, ON, M4T 2P1**

**Fax: (416) 921-1282**

**Instructions :**

Vous pouvez voter pour un maximum de huit (8) des candidats dans la liste ci-dessus en apposant un "X" dans la case à coté de leurs noms. Si vous ne désirez pas voter pour les huit veuillez mettre un "X" dans la case précédant les noms pour lesquels vous voulez voter. Si votre bulletin de vote est en bonne et dû forme, il sera voté pour les personnes dont les noms sont précédés par un "X" par la personne désignée par votre procuration.

Postez ou envoyez par fax au plus tard le 29 mai, 2009 (17 heures HSE), à:

**Bureau national de SRPC, CP 929,  
 Succ. 'Q', Toronto, ON, M4T 2P1**

**Télécopieur : (416) 921-1282**

**Official Prospectus**

**Royal\*2009\*Royale**

At the Parkway Convention Centre, 327 Ontario St., St. Catharines, Ontario, Canada, June 12th. - 14th, 2009  
 Hosted by the St. Catharines Stamp Club

**Rules & Regulations for Entry of Exhibits for the Competition**

Address all correspondence to:

**Exhibits Chairman, c/o Niagara Precision Ltd. 32 Seapark Drive; St Catharines, Ontario, L2M 6S6, Canada**

**1. Eligibility**

- ◆ This National level exhibition is open to all individual collectors if they meet the entry requirements contained in this prospectus. The whole of the exhibit must be the bona fide property of the exhibitor. If purchased as a unit it must have been owned for at least two years, extensively revised, & have been prepared by the exhibitor. The submitting of an entry is deemed to be an implied declaration by the exhibitor to that effect.

**2. Exhibit Classification Information**

- ◆ National Adult exhibits (Judged by RPSC National Standards)
- ◆ The National ADULT Classes / Divisions are intended for exhibits that fulfill one of the following criteria;
  - (a) the exhibit has been awarded at least a silver medal at a previous regional or local show, or
  - (b) the exhibit is deemed by the Exhibition Committee to be sufficiently advanced to be entered in this class / division, or
  - (c) the exhibit, though new, is submitted by & collector with a proven track record in previous National shows, or
  - (d) the exhibit is a dealer's entry.
- ◆ Youth Class (Judged by either FIP Youth Competition Regulations or by RPSC National standards).
- ◆ The Youth Class is intended for exhibitors who have not reached their twenty-second (22nd.) birthday on Jan. 1, 2009.
- ◆ The age & birth date of each exhibitor must be indicated on the official entry form, as age groupings will be established for the Class to aid in judging. For an exhibit to be judged under National standards it should have been awarded at least a silver-bronze at a previous regional or local show.
- ◆ General: An exhibitor may enter more than one exhibit, including those in the same class. Should the exhibition be oversubscribed the Exhibition Committee will make the final selection of accepted exhibits from the entry forms it has received, & will seek balance & fairness in the selection process.

**3. Entry**

- ◆ Each entry shall be entered in its correct Class / Division & section on an Official Entry Form. The jury reserves the right to re-classify any exhibit.

- ◆ Six (6) copies of the Title Page, And 5 copies of the Synopsis Page, & an Introduction or Plan Page (if applicable) must be sent with each completed Official Entry Form (These pages may be modified later if desired).
- ◆ No exhibit will be accepted unless the prescribed fee has been paid in full at the time of submission of the Entry Form (see Section 5).
- ◆ Please make cheques payable to: **St Catharines Stamp Club**,
- ◆ Entry forms must be received no later than May 1st, 2009.
- ◆ Acknowledgement of the Entry Form does not constitute acceptance for exhibition, unless so stated.
- ◆ The Exhibition Committee reserves the right to reject any exhibit, in part or whole, without assigning any reason for such rejection.
- ◆ When an exhibit is rejected or reduced in the number of frames by the Exhibition Committee, the (corresponding) entry fee shall be refunded.
- ◆ Failure to deliver an accepted exhibit forfeits the entry fee.

<b>General Class</b>	<b>One Frame Class</b>
<b>(a) Postal Division *</b>	<b>Post Card Class</b>
<b>(b) Revenue Division</b>	<b>Youth Class (ages as of Jan. 1,2009)</b>
<b>(c) Thematic Division</b>	<b>(a) Collectors aged up to 12 years</b>
<b>(d) Cinderella Division</b>	<b>(b) Collectors aged 13 - 15 years</b>
<b>(e) Display Division</b>	<b>(c) Collectors aged 16-18 years</b>
<b>(f) Illustrated Mail Division (including Maxiaphily)</b>	<b>(d) Collectors aged 19-21 years</b>

\* This includes Traditional Philately, Postal History, Postal Stationary, Aerophilately / Astrophilately, & Special Studies

**4. Exhibit Displays**

- ◆ Exhibits will be displayed in frames holding sixteen (16) pages, not to exceed 23 x 29 cm (9x11.5 inches), in four rows of four pages (4x4).
- ◆ Entries with larger and / or odd sized pages may be accommodated, but must be granted prior special approval from the Exhibition Committee.
- ◆ All exhibits must be mounted on white or light coloured pages.

- ◆ Pages must be in transparent page protectors, ideally closed on three sides, & numbered on the back in sequential order, to aid in the correct mounting of the exhibit by the Exhibition Committee. Exhibits failing to comply with the above may not be displayed or judged.
- ◆ The name of the exhibitor must not appear on the faces of the pages, unless on addressed exhibited covers.
- ◆ Forgeries must be so identified in the text. Failure to do so may result in the exhibit being downgraded.
- ◆ Each National exhibit accepted for the Exhibition shall be allotted not less than two (2) frames & not more than ten (10) frames.
- ◆ The exceptions are the exhibits in Ac One Frame Class, which will be judged by separate criteria.
- ◆ The Exhibition Committee reserves the right to reduce frame limits in order to accommodate a maximum number of qualified entries within the exhibition; also to place exhibits according to its own plan.
- ◆ Exhibits in the Youth Class will be displayed in the same type of frames as the National exhibits. Each Youth exhibit accepted will be allotted at least one (1) & usually not more than five (5) frames. All other rules shall be identical to those in the National Exhibition.

#### **5. Entry Fees**

- ◆ National Adult Exhibits: (two or more frames) \$ 16 (Canadian) per frame
- ◆ National Adult One Frame Class \$ 22 (Canadian) per entry
- ◆ Youth Class \$ 3 (Canadian) per frame.

#### **6. Delivery**

- ◆ Exhibits must be forwarded prepaid to R.W. Paige, c/o Niagara Precision Ltd., 32 Seapark Drive, St Catharines, Ontario, Canada, L2M 6S6 & must be received by the Exhibition Committee no earlier than June 5th, 2009 & no later than June 10th, 2009, unless the exhibitor plans on bringing the exhibits) to the show. If hand delivering, please note this on the entry form.
- ◆ Hand delivered exhibits must be received at the Montebello Room, Parkway Convention Centre, between the hours of 7 p.m. and 10 p.m. on Thursday June 11th, 2009, or between 7.30 a.m. and 9.00 a.m. on Friday. June 12th, 2009. Exhibitors may be able to make other arrangements for delivery with the Exhibition Committee, if previously approved. Any exhibit received after the 9.00 a.m., June 12th, 2009, deadline may find that the frames have been re-allocated.

#### **7. Return**

- ◆ The exhibition will close at 4.00 p.m. on Sunday June 14<sup>th</sup>, 2009. For security reasons, no exhibit or part thereof may be dismantled before the close of the Exhibition & until all visitors have cleared the exhibit area. (Travel plans should be made accordingly).
- ◆ Exhibitors or their agents may be asked to present proper proof of identity to obtain their exhibits from the Exhibition Committee at the Montebello Room, Parkway

Convention Centre, following the close of the Exhibition. Exhibits not claimed in person will be returned at the expense of the owner as soon as possible after the close of the exhibition in the manner directed by the owner. Pre-payment must be enclosed. An additional charge of \$ 3.00 Canadian must be included for wrapping & handling.

- ◆ Please allow sufficient time for processing before making enquiries.

#### **8. Insurance & Security**

- ◆ Owners are advised that, in their own interest, they should make arrangements for the insurance of their exhibits.
- ◆ Exhibits entered in the Exhibition will be received, held, exhibited & returned at the risk of the owner. The Exhibition Committee will ensure that there is adequate security provided to protect the exhibits, but shall not be held responsible for any loss or damage.

#### **9. Liability**

- ◆ Although all reasonable care & caution will be taken with the exhibits, no responsibility shall attach to the Royal Philatelic Society of Canada, The Parkway Convention Centre, The St. Catharines Stamp Club, nor members of the Exhibition Committee, & or its voluntary assistants or employees, for any loss or damage to an exhibit arising from any use or reason whatsoever.

#### **10. Judging**

- ◆ The Jury, consisting of at least four (4) accredited RPSC judges, will be selected by the RPSC Judging Coordinator, in consultation with me Exhibits Chair. The Jury will make decisions & deliberations & consultations among themselves, in keeping with the RPSC Regulations. Exhibits will be judged according to National level standards, with separate criteria for One Frame & Youth Classes, Display, & certain other Divisions. Decisions made by the Jury are final, & cannot be appealed.

#### **11. Awards**

- ◆ RPSC National medals will be awarded in five (5) levels in the General & One Frame Classes; Gold, Vermeil, Silver, Silver - Bronze, & Bronze. All awards will be granted in accordance with the judged merits of the exhibits, without regard to Class, Division, or Section.
- ◆ No medal / ribbon award will be made if, in the opinion of the judges, the exhibit is of insufficient merit, but a Certificate of Participation will be given.
- ◆ A Grand Award & Reserve Grand Award will be awarded.
- ◆ Available Society & other established Awards, including APS, ATA, BNAPS, & PHSC, will be awarded at the discretion of the Jury.

#### **12. Ruling Authority**

- ◆ Any & all questions that may arise concerning the Exhibition, which are not provided for by the Prospectus Rules & Regulations (other than Jury decisions) shall be decided by the Exhibition Committee in its sole & absolute discretion.

Prospectus officiel

# Royale\*2009\*Royal

Au Parkway Convention Centre, 327 rue Ontario, St. Catharines, Ontario, Canada, du 12 au 14 juin 2009, organisé par le St. Catharines Stamp Club

## Règlements relatifs à l'inscription des collections au concours

Veuillez adresser toute correspondance au :

**Responsable des collections, a/s Niagara Precision Ltd. 32 Seapark Drive; St Catharines, Ontario, L2M 6S6, Canada**

### 1. Critères d'admissibilité

- ◆ Cette exposition nationale est ouverte à tous les collectionneurs individuels qui satisfont aux critères stipulés dans le présent prospectus. La totalité de la collection exposée doit être la propriété de bonne foi du ou des exposants. Si une collection a été achetée en tant qu'unité, l'exposant doit l'avoir acquise depuis au moins deux ans, l'avoir révisée en profondeur et l'avoir préparée. La demande d'inscription est considérée comme une déclaration implicite de l'exposant à cet égard.

### 2. Renseignements sur la classification des collections

- ◆ Nationale pour adultes (jugée selon les standards nationaux de La SRPC)
- ◆ Les classes nationales ADULTES visent les collections qui remplissent l'un des critères suivants :
  - a) la collection a déjà reçu au moins une médaille d'argent lors d'une exposition locale ou régionale;
  - b) la collection a été jugée suffisamment avancée pour être inscrite dans cette catégorie par le Comité d'exposition;
  - c) la collection, bien que nouvelle, est proposée par un collectionneur qui a un dossier établi de participation à des expositions nationales;
  - d) la collection est inscrite par un négociant.
- ◆ Classe Jeunesse (jugée selon les règlements des concours jeunesse de la FIP ou selon les standards nationaux de La SRPC).
- ◆ La classe Jeunesse vise les collections présentées par des personnes âgées de moins de 22 ans au premier janvier 2009.
- ◆ La date de naissance et l'âge de chaque exposant doivent être indiqués dans le formulaire officiel d'inscription, car des groupes d'âge seront établis pour faciliter le jugement. Pour qu'une collection soit jugée selon les standards nationaux, elle doit avoir déjà reçu au moins une médaille de bronze-argent lors d'une exposition locale ou régionale.
- ◆ Classe générale : les exposants peuvent inscrire plus d'une collection, y compris des collections d'une même classe. Si le nombre d'inscriptions est trop élevé, le Comité de l'exposition effectuera une sélection finale. Le processus de sélection sera juste et favorisera l'équilibre du contenu de l'exposition.

### 3. Inscription

- ◆ Chaque collection doit être inscrite dans la classe, la division et la section appropriée du formulaire officiel d'inscription. Le jury se réserve le droit de reclasser toute collection.

- ◆ Six (6) copies de la page titre et 5 copies de l'exposé, ainsi qu'une introduction ou une page de plan (le cas échéant) doivent accompagner chaque formulaire officiel d'inscription rempli (ces pages pourront être modifiées ultérieurement si désiré).
- ◆ Les collections ne seront acceptées que si les frais ont été entièrement payés au moment de la soumission du formulaire d'inscription (voir l'article 5).
- ◆ Veuillez libeller votre chèque à l'ordre du : **St Catharines Stamp Club**.
- ◆ Les formulaires d'inscription devront parvenir au responsable avant le 1er mai 2009.
- ◆ L'accusé de réception du formulaire d'inscription ne signifie pas qu'une collection a été acceptée au concours à moins que cela ne soit clairement indiqué.
- ◆ Le Comité d'exposition se réserve le droit de refuser une collection, en tout ou en partie; sans avoir à justifier sa décision.
- ◆ Si une collection est rejetée ou le nombre de cadres réduit par le Comité de l'exposition, les frais (correspondants) seront remboursés.
- ◆ Les droits d'inscription seront retenus si une collection acceptée n'est pas livrée.

Classe générale	Classe Un cadre
a) Division postale*	Classe Cartes postales
b) Division des timbres-taxes	Classe Jeunesse (âge au 1 <sup>er</sup> janv. 2009)
c) Division thématique	a) Collectionneurs de 12 ans et moins
d) Division paraphilatélique	b) Collectionneurs de 13 à 15 ans
e) Division des présentations	c) Collectionneurs de 16 à 18 ans
f) Division du courrier illustré (y compris la maximaphilie)	d) Collectionneurs de 19 à 21 ans

\*Philatélie traditionnelle; histoire postale; entiers postaux, aérophilatélie; astrophilatélie; études spéciales

### 4. Présentation des collections

- ◆ Les collections devront être présentées dans des cadres comprenant seize pages (16) d'une grandeur maximale de 23 x 29 cm (9 x 11 po), placées en quatre rangées, de quatre pages (4x4).
- ◆ Les collections comprenant de grandes pages ou des pages de grandeur non standard pourraient être acceptées sous approbation préalable du Comité de l'exposition.



- ◆ Toutes les collections doivent être montées sur des pages blanches ou légèrement colorées.
- ◆ Les pages doivent être insérées dans des pochettes protectrices transparentes solides, de préférence fermées sur trois côtés, et numérotées au verso dans un ordre croissant qui permettra au Comité de l'exposition de monter la collection correctement. Les collections non conformes risquent de ne pas être présentées ou jugées.
- ◆ Le nom de l'exposant ne doit pas apparaître au recto des pages, sauf sur des plis adressés inclus dans la collection.
- ◆ Les faux doivent être présentés comme tels dans le texte. Le défaut de se plier à cette exigence pourrait entraîner le déclassement de la collection.
- ◆ Chaque collection nationale devrait compter au moins deux (2) cadres et pas plus de dix (10) cadres.
- ◆ Les seules exceptions sont les collections de classe Ac à un cadre, qui seront jugées selon des critères particuliers.
- ◆ Le Comité de l'exposition se réserve le droit de réduire le nombre de cadres afin d'inclure un nombre maximal d'inscriptions qualifiées à l'exposition et de placer les collections selon le plan qu'il a dressé.
- ◆ Les collections de la classe Jeunesse doivent être exposées dans des cadres correspondant à ceux de la classe nationale. Chaque collection jeunesse comportera au moins un (1) cadre et pas plus de cinq (5). Tous les autres règlements sont identiques à ceux des expositions nationales.

#### **5. Droits d'inscription**

- ◆ Collections nationales adultes : (deux cadres ou plus) 16 \$ (canadiens) le cadre;
- ◆ Nationale adultes, classe un cadre 22 \$ (canadiens) l'inscription;
- ◆ Classe jeunesse 3 \$ (canadiens) le cadre.

#### **6. Livraison**

- ◆ Les collections devront être expédiées (expédition payée à l'avance) au : R.W. Paige c/o Niagara Precision Ltd., 32 Seapark Drive, St Catharines, Ontario, Canada, L2M 6S6; elles devront parvenir au Comité de l'exposition au plus tôt, le 5 juin et au plus tard, le 10 juin 2009, à moins que l'exposant ne prévoie les apporter lui-même au lieu de l'exposition. Le cas échéant, vous devez indiquer votre intention de livrer vos collections en main propre sur le formulaire d'inscription.
- ◆ Les collections livrées en main propre devront parvenir au Montebello Room, Parkway Convention Centre entre 19 heures et 22 heures, le jeudi 11 juin 2009; ou entre 7 heures 30 et 9 heures le vendredi 12 juin 2009. Les exposants pourront prendre d'autres dispositions de livraison à condition que ces dernières aient été préalablement approuvées par le Comité de l'exposition. Les collections qui arriveront après 9 heures le 12 juin risquent de perdre leur place.

#### **7. Retour**

- ◆ L'exposition se terminera à 16 h le dimanche 14 juin 2009\*. Pour des raisons de sécurité, aucune collection ne pourra être démontée avant la fin de l'exposition tant que tous les visiteurs n'auront pas quitté l'aire d'exposition. (L'organisation du voyage devra être planifiée en conséquence).

- ◆ Les exposants ou leurs représentants autorisés pourraient devoir présenter une preuve d'identité pour que le Comité d'exposition leur remette leurs collections au Montebello Room, Parkway Convention Centre après la clôture de l'exposition. Les collections qui ne seront pas réclamées en personne seront retournées à leur propriétaire, à ses frais, le plus tôt possible après la clôture de l'exposition et de la façon indiquée par le propriétaire. Un paiement anticipé doit être inclus. Des frais supplémentaires de 3,00 \$ canadiens seront exigés pour l'expédition et l'emballage.
- ◆ Veuillez accorder un délai raisonnable pour le traitement de cet envoi avant de chercher à savoir où en sont les choses.

#### **8. Assurance et sécurité**

- ◆ Nous conseillons aux exposants, dans leur propre intérêt, de prendre les dispositions nécessaires en vue d'assurer leurs collections.
- ◆ Les collections présentées à l'exposition seront reçues, manipulées, exposées et retournées aux risques de leur propriétaire. Le Comité d'exposition assurera une sécurité adéquate, mais ne sera pas tenu responsable des pertes ou des dommages.

#### **9. Responsabilité en cas de dommages**

- ◆ Des précautions raisonnables seront prises pour protéger les collections. Cependant, aucune responsabilité ne sera imputée à La Société royale de philatélie du Canada, au Parkway Convention Centre, au St. Catharines Stamp Club, aux membres du Comité d'exposition ou à leurs aides bénévoles ou employés pour toutes pertes ou tous dommages aux collections, encourus de quelque façon et pour quelque raison que ce soit.

#### **10. Évaluation**

- ◆ Un jury constitué d'au moins quatre (4) juges accrédités de la SRPC sera sélectionné par le coordonnateur des évaluations de La SRPC en consultation avec le président de l'exposition. Les juges délibéreront et prendront leurs décisions à huis clos conformément aux règlements de La SRPC. Les collections seront jugées selon les standards nationaux et selon des critères particuliers pour les divisions un cadre, jeunesse, présentations et certaines autres divisions. Les décisions prises par le jury sont finales et sans appel.

#### **11. Prix**

- ◆ Les médailles nationales de La SRPC seront accordées selon cinq (5) niveaux dans les classes générale et un cadre : or, vermeil, argent, bronze-argent, bronze. Tous les prix seront accordés au mérite des collections jugées sans égard à la classe, à la division ou à la section.
- ◆ Aucune médaille ni aucun ruban ne seront décernés si les juges sont d'avis qu'une collection n'est pas à la hauteur, mais un certificat de participation sera accordé.
- ◆ Un Grand prix et un Grand prix de réserve seront décernés.
- ◆ Des prix de la Société et d'autres prix reconnus, notamment, APS, ATA, BNAPS et PHSC seront attribués à la discrétion du jury.

#### **12. Pouvoir de décision**

- ◆ Toutes questions concernant l'exposition, non visées par les règlements du présent prospectus (autre que les décisions du jury) sera réglée à la discrétion unique et absolue du Comité d'exposition.

# ROYAL \* 2009 \* ROYALE

At the Parkway Convention Centre, 327 Ontario St., St. Catharines, Ontario, Canada, June 12th - 14th, 2009  
 Au Parkway Convention Centre, 327, rue Ontario, St. Catharines, Ontario, Canada, du 12 au 14 juin 2009

## PHILATELIC EXHIBITION ENTRY FORM /

## FORMULAIRE D'INSCRIPTION À L'EXPOSITION PHILATÉLIQUE

A separate form is to be used for each exhibit. Please type or print in block letters. This form must reach the Exhibition Committee no later than **May 1, 2009** by mailing to:

**Exhibits Chairperson:**

**c/o Niagara Precision Ltd.**

**32 Seapark Dr., St. Catharines, ON Canada L2M 6S6**

Subject to acceptance by the Exhibition Committee and to other conditions set forth in the Prospectus (to which I agree), I wish to enter the following exhibit:

Utilisez un formulaire par collection. Veuillez le remplir en lettres majuscules. Ce formulaire doit parvenir au Comité d'exposition au plus tard le **1er mai 2009**, à l'adresse suivante :

**Président du Concours : a/s de Niagara Precision Ltd.**

**32 Seapark Dr., St. Catharines, ON Canada L2M 6S6**

Sous réserve de l'approbation du Comité d'exposition et des conditions formulées dans le prospectus (que j'approuve), je souhaite présenter la collection suivante :

**Exhibit Title / Titre de la collection :** \_\_\_\_\_

**Description** (Maximum 25 words – for inclusion in the Exhibition Program)

**Description** (25 mots maximum, à inclure dans le programme de l'exposition)

---



---



---

**Please note:** 5 clear copies of the Title / Introduction / Plan page(s), and 5 copies of the Synopsis page, must accompany this form. If the entry is accepted, these pages will be submitted to the jury for their advanced preparation.

**Remarque :** Cinq copies bien lisibles de la page titre, de l'introduction et du plan de l'exposé doivent accompagner le présent formulaire. Si la demande est acceptée, ces documents seront soumis au jury pour être préparés à l'avance.

Number of frames required / Nombre de cadres requis : \_\_\_\_\_ for number of pages / pour le nombre de pages : \_\_\_\_\_  
 To be entered in the following Class/Division / devant être inscrites dans la classe ou la division suivante :

General Class / Classe générale

- a. Postal Division / Division postale\*
- b. Revenue Division / Division des timbres-taxes
- c. Thematic Division / Division thématiques
- d. Cinderella Division / Division des vignettes diverses
- e. Display Division / Division des présentations
- f. Illustrated Mail Division / Division du courrier illustré\*\*

\* *Traditional Philately, Postal History, Aero/Astrophilately, Special Studies and Postal Stationery.*

\* *Philatélie traditionnelle, Histoire postale. Aéro/Astro philatélie, Études spéciales et Entiers postaux.*

\*\* *Including Maximaphily / Y compris la maximaphilie.*

One Frame Class / Cadre unique

Post card Class / Classe Carte postale

Youth Class / Classe Jeunesse

- a. Collector up to age 12 years\* Birth date ( / / ) Collectionneur de moins 12 ans\* date de naissance ( / / )
- b. Collector aged 13-15 years\* Birth date ( / / ) Collectionneur de 13 à 15 ans\* date de naissance ( / / )
- c. Collector aged 16-18 years\* Birth date ( / / ) Collectionneur de 16 à 18 ans\* date de naissance ( / / )
- d. Collector aged 19-21 years\* Birth date ( / / ) Collectionneur de 19 à 21 ans\* date de naissance ( / / )

\* *Age to be considered as of January 1, 2009. / \*Âge au 1<sup>er</sup> janvier 2009.*

**AWARDS / PRIX**

Awards previously won by the exhibit (Name of Exhibition and award level) /  
 Prix gagnés antérieurement par cette collection (nom de l'exposition et niveau du prix)

1. \_\_\_\_\_
2. \_\_\_\_\_
3. \_\_\_\_\_

**New Exhibit? / Nouvelle Collection?** (Yes / Oui) \_\_\_\_\_ (No / Non) \_\_\_\_\_

**DELIVERY OF EXHIBIT / LIVRAISON DE LA COLLECTION**

- Personally / Personnellement  By Commissioner / Par le commissaire  
 By my agent (name) / Par mon représentant \_\_\_\_\_  
 Mail or other courier (please specify) / Par la poste ou par un service de courrier (s.v.p., précisez) \_\_\_\_\_  
 To / À : \_\_\_\_\_

**PICK-UP OF EXHIBIT / COLLECTE DE LA COLLECTION**

- Personally / Personnellement  By Commissioner / Par le commissaire  
 By my agent (name) / Par mon représentant \_\_\_\_\_  
 Mail or other courier (please specify) / Par la poste ou par un service de courrier (s.v.p., précisez) \_\_\_\_\_

**Shipping Instructions / Directives relatives à l'expédition**

If exhibit is to be returned by mail/courier, please indicate service desired (self-addressed adhesive labels would be appreciated).  
 Si la collection doit être retournée par courrier ou par service de messagerie, veuillez indiquer le type de service que vous souhaitez retenir (nous vous remercions de joindre des étiquettes auto-collantes adressées au destinataire).

- Priority Mail / Envoi prioritaire  Insured Mail / Envoi assuré  Registered Mail / Envoi recommandé  Other / Autre

**Note:** Please do not send or expect return delivery of exhibit(s) via UPS.

**Remarque :** Veuillez ne pas expédier vos collections par l'intermédiaire d'UPS. De plus, les services de ce courrier ne seront pas retenus pour le retour de vos collections.

I understand that I will be responsible for insuring my Exhibit and will not hold the Royal Philatelic Society of Canada, the St. Catharines Stamp Club, the Parkway Convention Centre, nor any of their volunteers, members, committees, officers, or employees for any loss or damage to the exhibit.

I agree to the terms of this prospectus, and confirm that this exhibit is my sole property.

Je comprends que je suis responsable de l'assurance de mes collections. En cas de perte ou de dommages qui surviendraient dans le cadre de l'exposition, je ne tiendrai pas responsable La Société royale de philatélie du Canada ni le St. Catharines Stamp Club ni le Parkway Convention Centre ni aucun de leurs bénévoles, membres, comités, agents ou employés.

J'approuve les modalités du prospectus et je confirme que je suis le propriétaire unique de cette collection.

Date: \_\_\_\_\_ Signature: \_\_\_\_\_

Name / Nom : \_\_\_\_\_

Nom de plume (if so desired) / Pseudonyme (si désiré) : \_\_\_\_\_

Address / Adresse : \_\_\_\_\_

City / Ville : \_\_\_\_\_ Province / Province : \_\_\_\_\_ Postal Code / Code postal : \_\_\_\_\_

Telephone / Téléphone : (home / domicile) \_\_\_\_\_ (business / travail) \_\_\_\_\_

Fax / Télécopieur : \_\_\_\_\_ E-mail / Courriel : \_\_\_\_\_

**AMOUNT ENCLOSED / MONTANT JOINT**

For ___ National multi/frames @ \$16.00 each / Pour ___ Cadres multi nationaux @ 16,00 \$ chaque	\$ _____
For ___ National single frames @ \$22.00 each / Pour ___ Cadres uniques nationaux @ 22,00 \$ chaque	\$ _____
For ___ Youth frames @ \$3.00 each / Pour ___ Cadres jeunesse @ 3,00 \$ chaque	\$ _____
Return shipping charges (if applicable) / Frais d'expédition pour le retour (le cas échéant)	\$ _____
Return handling charge \$3.00 / Frais de manutention pour le retour 3,00 \$	\$ _____
<b>Total</b>	\$ _____

Please make cheques payable to / Veuillez libeller votre chèque à l'ordre de **ROYAL\*2009\*ROYALE**

Member / Membre :

- RPSC / SRPC  BNAPS  BNAPS-PNWRG  PHSC  AAPE  APS  ATA  CAS  
 Other Philatelic Organization / Autre organisme philatélique : \_\_\_\_\_

# ROYAL \* 2009 \* ROYALE

At the Parkway Convention Centre, 327 Ontario St., St. Catharines, Ontario, Canada, June 12th. - 14th, 2009  
 Au Parkway Convention Centre, 327, rue Ontario, St. Catharines, Ontario, Canada, du 12 au 14 juin 2009

St. Catharines is the major city in the Niagara Region, an area renowned for attractions of all types like: Niagara Falls, Welland Canal, Forts Erie and George, the Shaw Theatre, wineries and orchards. There are a lot of lesser known but equally attractive places to visit and enjoy. In addition there are all sorts of opportunities to shop, play sports, walk in parks and along canals (even locks dating back to the 1830s), and enjoy the special activities that occur all year. Our show should coincide with peak strawberry season and be in advance of other fruits we will enjoy all summer long.

The St. Catharines Stamp Club is pleased to host the first Royal/Royale show to be held in the Niagara area. We hope each visitor will take advantage of the opportunity to explore the Niagara Region.

## Location of the Show

The Parkway Convention Centre is located at 325 Ontario Street in St. Catharines. The facility is about 2 kilometers south on Ontario Street from the Queen Elizabeth Highway and your exit number is 47 (QEW is a major highway from Toronto to Fort Erie/Buffalo). The convention centre is a part of the Quality Hotel. For more information please go to their web-site at: <http://www.qhparkway.com/>

Reservations will be accepted after 1 July, 2008. The Parkway has set aside a block of rooms for Royal 2009 Royale and once these are sold will make alternate arrangements for attendees at either the Howard Johnson or the Holiday Inn both of which are about a 5 minute drive away.

For out-of-town visitors, St. Catharines is 100 km from the Toronto Airport, 70 km from the Hamilton Airport and 75km from the Buffalo Airport providing a range of choices for travelers.

## Optional Activities:

There is a multitude of optional activities those who accompany you to our area. All age groups can find suitable entertainment. The organizers of the convention are not handling any tours but we have a number of web-site links for your convenience regarding the Niagara area.

## Planned Events:

- ◆ President's Reception, Friday evening with a cash wine bar (June 12)
- ◆ Awards Banquet, Saturday Evening with a cash bar (June 13) at the Holiday Inn Hotel
- ◆ Stamp Launch
- ◆ Seminars (up to 15 different seminars can be accommodated)
- ◆ Royal Philatelic Society of Canada meetings
- ◆ Auction on Sunday afternoon (June 14)

St. Catharines est l'une des villes importantes de la région du Niagara. Les attractions suivantes ont fait sa renommée : les chutes du Niagara, le canal Welland, les forts George et Érié, le théâtre Shaw, les vergers et les vignobles. De nombreux autres lieux moins connus sont tout aussi intéressants à visiter. On peut également y faire du sport, du magasinage, des promenades dans les parcs ou le long du canal (certaines écluses datent de 1830) et profiter d'autres activités offertes à longueur d'année. Notre exposition devrait coïncider avec le meilleur de la saison des fraises, donc avant celle d'autres fruits qui mûriront plus tard au cours de l'été.

Le St. Catharines Stamp Club se réjouit d'être l'hôte de la première exposition Royal/Royale à avoir lieu dans la région du Niagara. Nous espérons que chaque visiteur en profitera pour la visiter.

## Emplacement de l'exposition

Le Parkway Convention Centre est situé au 325, rue Ontario à St. Catharines Il est à environ deux kilomètres au sud de la rue Ontario à partir l'autoroute Queen Elizabeth, Sortie 47 (la QEW est une grande autoroute reliant Toronto à Fort Érié/Buffalo). Le centre de congrès est dans le Quality Hotel. Pour obtenir des renseignements supplémentaires, visitez le site Web de l'hôtel : <http://www.qhparkway.com/>

Les réservations sont acceptées depuis le 1er juillet 2008. Le Parkway a réservé des chambres pour Royal 2009 Royale. Lorsque ces chambres seront toutes louées, il sera possible de prendre d'autres dispositions, soit avec le Howard Johnson ou le Holiday Inn, tous deux situés à environ cinq minutes en auto.

Pour les visiteurs de l'extérieur : St. Catharines est à environ 100 kilomètres de l'aéroport de Toronto, à 70 kilomètres de celui d'Hamilton et à 75 kilomètres de celui de Buffalo, ce qui offre de nombreuses possibilités aux voyageurs.

## Autres activités :

De nombreuses activités sont offertes à ceux qui vous accompagnent. Les personnes de chaque groupe d'âge pourront trouver un divertissement qui leur convient. Les organisateurs du congrès n'ont pas prévu de visites guidées, mais nous avons des adresses de sites Web sur la région du Niagara.

## Activités au programme :

- ◆ Réception du président, vendredi soir, service de bar payant (12 juin)
- ◆ Banquet de remise des prix, samedi soir, service de bar payant (13 juin à l'hôtel Holiday Inn)
- ◆ Lancement de timbres
- ◆ Séminaires (il est possible de tenir jusqu'à quinze séminaires différents)
- ◆ Réunions de La Société royale de philatélie du Canada
- ◆ Encan le dimanche après-midi (14 juin)

# ROYAL \* 2009 \* ROYALE

At the Parkway Convention Centre, 327 Ontario St., St. Catharines, Ontario, Canada, June 12th. - 14th, 2009  
 Au Parkway Convention Centre, 327, rue Ontario, St. Catharines, Ontario, Canada, du 12 au 14 juin 2009

## REGISTRATION FORM / FORMULAIRE D'INSCRIPTION

Name/Nom \_\_\_\_\_

Address/Adresse \_\_\_\_\_

City/Ville \_\_\_\_\_ Province/State \_\_\_\_\_

Country/Pays \_\_\_\_\_ Postal Code \_\_\_\_\_

Telephone \_\_\_\_\_ E-mail/Courriel \_\_\_\_\_

Cheques to be made payable to: **Royal 2009 Royale**. Please register for tickets by **May 1, 2009**  
 Veuillez libeller votre chèque a l'ordre de: **Royal 2009 Royale** et commander vos billets pour les activités avant le **1er mai 2009**.

St. Catharines Stamp Club, 15 Baxter Crescent, Thorold, Ont. L2V 4S1

Event	Cost	# Tickets	Total
President's Reception - Friday June 12 Réception du président - le vendredi 12 juin	\$25.00	_____	_____
Awards Banquet - Saturday June 13 <i>(Please note special dietary needs at the bottom of the form.)</i> Banquet de remise des prix <i>(Veuillez prendre note des besoins alimentaires particuliers inscrits au bas du formulaire)</i> - le samedi 13 juin	\$50.00*	_____	_____
President's Reception & Awards Banquet Réception du président et Banquet de remise des prix	\$70.00*	_____	_____
Total (cheque attached)			_____

\* Includes 3 day pass to the Bourse.

# SELL QUALITY SELLS

## ROYAL PHILATELIC SOCIETY OF CANADA SALES CIRCUITS

### Most Requested Sales Circuit Books:

- Australia
- Canada - All
- Commonwealth - Victoria & George VI esp.
- Germany, colonies, states occupations DDR etc
- Mexico
- Denmark
- France
- Russia
- Portugal
- Iceland
- Hong Kong
- Japan
- New Zealand u

### Countries Available

- British Commonwealth excellent early, to "Elizabeth", all areas
- Canada , Japan mod u precancels, Malaysia coils, plate blocks, Scandinavia modern nh, Balkans, Europe, Germany - all, Greece
- USA
- Switzerland, Turkey, and SWA

We have a selection of Germany (in bags) and assorted postal history, including NS and PEI split ring cancels on postcards, NB cancels, Canada & world covers

## Can't tell a book by its cover



We have lots of top quality stamps in our Circuit Books, and are always seeking more for our many buyers!

Good quality Canada is especially in demand. Hope to hear from you soon.

### Want to buy stamps at reasonable prices?

Write, phone, fax or e-mail today, for a complete information package on how to buy or how to sell through the **RPSC Sales Circuits**. RPSC members only.

Independently owned and operated by: R. Dwayne Miner, Owner, and Sandra E. Foss, Circuit Manager

### See us at the Shows

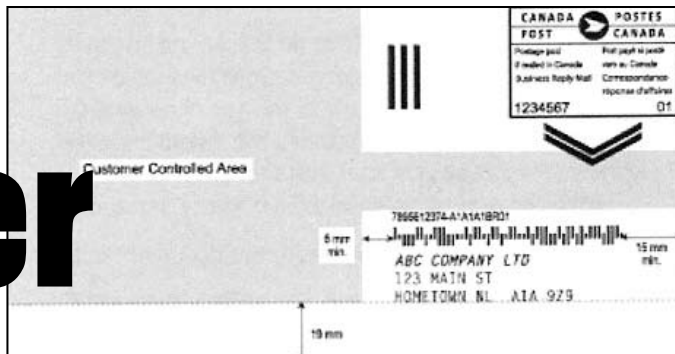
- February 27-28, **Regina**, (Fri & Sat), Seven Oaks Inn, Regina Philatelic Society
- March 20-21 **Vancouver**, (Fri & Sat.), Richmond Inn
- March 27-29 **Edmonton**, Edmonton Stamp Club, West Edmonton Mall
- April 25-26 **Calgary**, Calgary Philatelic Society, Kerby Centre
- May 1-3 **Winnipeg** Winnipeg Philatelic Society, Viscount Gort Hotel

**Box 1109**  
**Cochrane, AB T4C 1B2**  
**Canada**  
**Phone: (403) 932-2947**  
**Fax: (403) 932-2947**  
**E-mail: rpscsale@telus.net**



# Bigger & Better

By Andrew Notley



New improvements to Business Reply Mail (BRM) provide customers with more flexibility when creating their artwork. Enhancements include enlarging the area where customers can put images and messages, offering a window envelope option and changing the specifications and format.

Currently, customers have very limited space for targeted messages and images; most don't even use this area as it's considered too small. Even though current specifications allow for colour images and envelopes, the majority of BRM cards and envelopes are black on white, uninspiring by today's marketers' standards.

To provide BRM customers with more space to be creative, visible and colourful, the Customer Controlled Area on the BRM piece has been enlarged. This allows customers to reposition the address and barcode elements, creating more space to increase brand identification and promote their products and services. The expanded area can also be used by marketers who use their own barcodes to track responses and improve their customer data. Test out the new design by using the BRM Artwork Online Tool at [www.canadapost.ca/obc](http://www.canadapost.ca/obc).

Thanks are extended to the author and *Contact* for reprint permission. ☒

## SEE US AT STAMP SHOWS ACROSS CANADA & THE U.S.

- FOR -

- Classic Canada through Admirals
- Superb Large and Small Queens and Jubilees
- Greene Foundation Certificates
- Semi-Official Airmails  
- World's deepest stock of stamps, covers and specialty items
- Canadian Revenues - Newfoundland

ASDA  
APS



**MARK-LANE  
STAMPS**

CSDA  
RPSC

P.O. Box 626 West Haverstraw, NY 10993  
Tel/Fax (845) 362-5330 E-mail [RWS45@aol.com](mailto:RWS45@aol.com)  
[www.mark-lanestamps.com](http://www.mark-lanestamps.com)  
Want Lists Filled "Fair Dealing Since 1943"

## Canada REVENUES Semi Official Air Mail

stamps & covers



**Duck, Hunting &  
Wildlife Conservation  
stamps & licenses**

Huge stock. Price lists on request.  
See our huge websites. *Established since 1970*

[www.esjvandam.com](http://www.esjvandam.com)  
[www.canadarevenuestamps.com](http://www.canadarevenuestamps.com)

*We buy & sell all of the above*

**E.S.J. van Dam Ltd**

P.O. Box 300cp, Bridgenorth Ont., Canada K0L 1H0  
Tel: (705) 292-7013 Toll Free: 1-866-EVANDAM

**E-mail: [esvandam@esjvandam.com](mailto:esvandam@esjvandam.com)**

member: ara, aps, csda, asda, bnaps, rpsc

## *This Symbol*



is your assurance that the dealer displaying it has subscribed to a high standard of business principles and ethics. When you are buying or selling stamps, covers or postcards, you should look for dealers displaying this logo. We are the professional Association to which they belong.

### **The Canadian Stamp Dealers' Association**

P.O. Box 81, Lambeth Stn.  
London, ON N6P 1P9  
[www.csdaonline.com](http://www.csdaonline.com)

## *You're invited to join The British North America Philatelic Society*

*BNA Topics*, quarterly journal  
*BNA PortraitS*, quarterly newsletter

*Benefits include:*

- Annual conventions in the U.S. and Canada.
  - More than 20 study groups actively investigating specialty areas, ranging from Large Queens to first day covers.
- Regional groups located in many cities in Canada and the U.S.

*Contact the Secretary:*

**Peter Jacobi**

#6 – 2168-150A St.

Surrey, BC V4A 9W4 Canada

*e-mail:* [pjacobi@shaw.ca](mailto:pjacobi@shaw.ca)

*Web site:* <http://www.bnaps.org>



***BNAPS – The Society for Canadian Philately***

**RPSC**  
PHILATELIC  
RESEARCH  
FOUNDATION



**SRPC**  
FONDATION DE  
RECHERCHE  
PHILATÉLIQUE

### **Donations to the RPCS Philatelic Research Foundation**

The RPSC Philatelic Research Foundation operates a charitable program whereby collectors may donate philatelic material to the Foundation and receive a charitable receipt equal to its appraised replacement value for income tax purposes.

The objectives of the Foundation are to use the proceeds from donations to promote youth philately and to encourage philatelic research leading to the sharing of information through literature and other media forms with collectors.

Potential donors should contact the Foundation President Ted Nixon directly (416-868-2044) or via the RPSC National Office (416-921-2077) or in writing at 10 Summerhill Ave., Toronto, ON, M4T 1A8, to discuss the type of material intended for donation and the process for receiving a charitable donation receipt.

### **Dons à la RPCS Philatelic Research Foundation**

La RPSC Philatelic Research Foundation (Fondation de la SRPC pour la recherche philatélique) gère un programme de bienfaisance qui accorde aux collectionneurs qui lui font un don, un reçu aux fins d'impôt sur don de charité équivalent à la valeur d'échange à dire d'expert des articles donnés.

L'objectif de la fondation est d'utiliser le produit de ces dons en vue de promouvoir la jeune philatélie et d'encourager la recherche qui permettra la circulation d'information philatélique par le biais de publications et d'autres formes de médias.

Les personnes intéressées à faire un don peuvent s'adresser au président de la fondation, Ted Nixon, directement au 416-868-2044 ou au Bureau national au 416-921-2077, ou par écrit au 10 Summerhill Ave., Toronto, ON, M4T 1A8, afin de discuter des articles à donner et de la démarche à suivre pour obtenir un reçu sur don de charité.



# GOLDEN JUBILEE ERRORS:

## *What Every Philatelist Should Know*

By Joseph Monteiro

All images: Courtesy of Saskatoon Stamp Centre

### I. Introduction

The historic Golden Jubilee of Queen Elizabeth II was celebrated in 2002. Her Majesty, Elizabeth Alexandra Mary, was born on April 21, 1926 in London, England. She was the first child of the Duke and Duchess of York, who became King George VI and Queen Elizabeth in 1936. She married Lieutenant Philip Mountbatten on November 20, 1947 and the coronation took place on June 2, 1953 at Westminster Abbey. She is the fourth British monarch to celebrate a Golden Jubilee and has an impressive record which every monarch would be happy to achieve. An elaborate description of her background, major achievements and numerous contributions to the Commonwealth and to mankind in general can be found in publications of Canada Post.<sup>[1]</sup>

The Golden Jubilee issue also resulted in gold for the lucky finders of errors of this stamp. More importantly, it teaches philatelists a number of interesting lessons about how this stamp was printed and perforated that is normally not known to philatelists. It enables us to better appreciate philately and to place it on a sound analytical and educational foundation. In this article, the discovered errors, to date, on this stamp will be described with emphasis on those aspects of the stamp not previously published.

### II. A Brief Background of the Stamp

On January 2, 2002, Canada Post issued a 48-cent stamp to commemorate Her Majesty's Golden Jubilee. The stamp is designed by Gottschalk + Ash International. The design features two images, the maple leaf, a traditional symbol of Canada and the Queen. It is meant to symbolize Canada's support and best wishes to Her Majesty on this special occasion. The designer has been successful in subtly concealing the background of small maple leaves printed on the stamp. This security feature would be very difficult to copy even by the most talented individuals excelling in forgeries. The stamp was printed by Ashton Potter in panes of 16 stamps

using lithography in eight colours on Tullis Russell Coatings paper and was perforated with a 13+ perforation gauge. The stamp is tagged on all four sides and PVA is used for gum.

The marginal inscriptions appear at the top and bottom of the pane in each corner. On the sides of the pane in the top and bottom corners appear designs of the Maple Leaf (six per block of four - three on each of the two selvages).

### III. Fully Imperforate Errors

The fully imperforate stamp has its selvedge with inscriptions. In other words, the error comes from philatelic panes. It was brought to our attention by Gary Lyon of Eastern Auction Ltd. The firm's pamphlet states as follows: "Recently news of an exciting new major error reached my office. The 48¢ commemorative (Scott #1932) issued for the Golden Jubilee of the Coronation of Queen Elizabeth II had been discovered completely imperforate. I was eventually successful in purchasing all five sheets that were found. The quantity available to collectors is obviously very small because



CANADA 1932a 48c Queen Elizabeth Golden Jubilee IMPERFORATE UR IMPRINT BLOCK of 4. Only a small number of sheets were found, with most split into pairs.

each sheet contains only 16 stamps. Therefore, the total find produces a mere 20 blocks (or 40 pairs), making it one of the scarcest modern-era imperforate errors. Demand from Canadian collectors is sure to be high."<sup>12]</sup>

This error was also offered for sale later by Saskatoon Stamp Centre. Their catalogue states: "394 1932a, IP 48c Queen Elizabeth Golden Jubilee IMPERFORATE UR IMPRINT BLOCK of four. Only a small number of sheets were found with most split into pairs. A DRAMATIC ERROR! XF NH CS as pairs \$3,600 (colour photo pg 54) ..... C\$2,950.00."<sup>17]</sup>

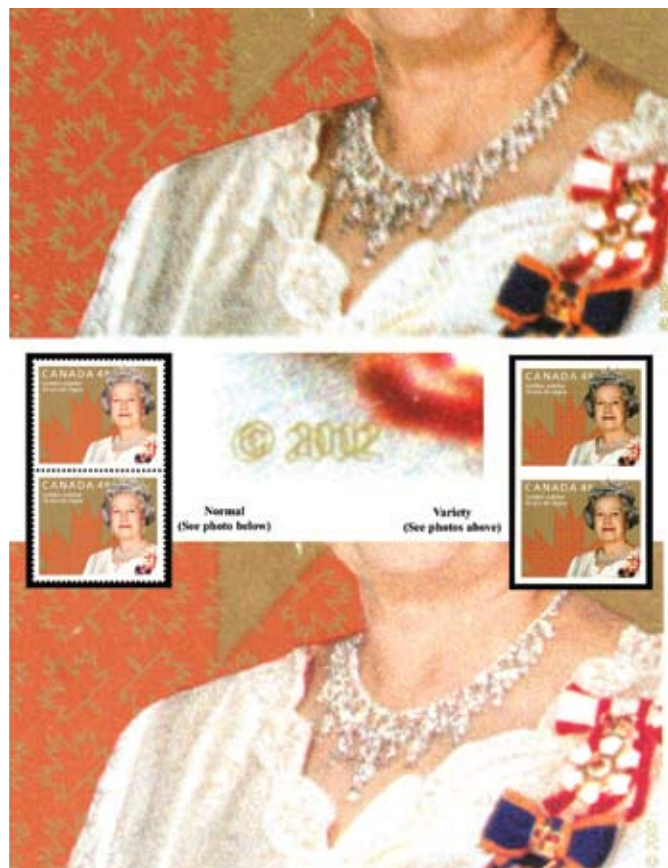
Though only five panes of stamps were found, it is likely that six panes or 24 blocks of four of this error were printed at the very minimum.

What caused this error? There are two possible explanations responsible for this error. The first explanation is that a sheet or sheets of printed stamps were taken for examination and subsequently not sent to be perforated and were later guillotined into panes and distributed for sale. This is the most commonly given explanation. The second explanation is that the perforator malfunctioned during the perforating process either because of some mechanical error or because of electric power variances. There is evidence that at least some imperforate panes were found because of the second explanation. This does not completely rule out the first explanation as the errors may be due to both explanations. This appears to be suggested by the description of Eastern Auctions Ltd.

These explanations caution us not to jump to any conclusion as to the cause of the error or to have any preconceived notion even if one sees a fully imperforate pane. The imperforate pane may be from the middle column of panes or the first or last column of panes of the sheet if the perforator jumped from the first pane to the end of the sheet.

**IV. Fully Imperforate Error with Double Print**

The double-print imperforate error was advertised for sale by Saskatoon Stamp Centre. The catalogue described it as follows: "396 1932a var1, I 48c Queen Elizabeth Golden Jubilee



**CANADA 1932ai 48c Queen Elizabeth Golden Jubilee IMPERFORATE vertical pair with DOUBLE PRINT, most noticeable on Gold date & small leaves. Only some of the 5 sheets of 16 found have doubling.**

IMPERFORATE vertical UL corner pair with DOUBLE PRINT, most noticeable on Gold date & small leaves. Only a small portion of these have doubling. Vertical crease. Still a lovely DOUBLE ERROR! o/w VF NH CS as normal \$1,800 (photo p. 63) .....C\$595."<sup>17]</sup>

The foregoing description suggests that this error is a multiple error. First, it is a fully imperforate error. Second, it is a double print error.

What caused this error? The cause of the imperforation was described earlier. The cause of the double image is likely a result of a second impression of one of the printing plates.

These errors teach us a number of things: First, a double impression does not have to be caused by both plates; it is more likely that a double impression is caused by one plate when two or more



**CANADA 1932ai 48c Queen Elizabeth Golden Jubilee IMPERFORATE vertical UL corner pair with DOUBLE PRINT, most noticeable on Gold date & small leaves. Only a small portion of these have doubling.**

plates are used in the printing process rather than when only one plate is used. The probability of two errors (doubling of both plates) occurring on the same stamp is much lower than the probability of one error on the same stamp. Second, from the description it appears that the doubling was made by the first plate which depicts the maple leaves, portrait of Her Majesty, bar code, colour codes and inscription imprints.

### V. Partial Imperforate Errors

There are at least two partial imperforate errors. The first partial imperforate error was advertised for sale by Eastern Mail Sale in their mail auction. The newspaper described it as follows: "1932 48c Golden Jubilee left margin mint pair with a rare major imperforation error, the right hand stamp is imperforate as is at the left, light wrinkling as do all of the only four known examples, VF NH showpiece.....Photo Est. \$1750.00"<sup>[3]</sup>

The above described error from the illustration of a pair of stamps may be described as follows: The right hand column of the pane of stamps is imperforate on three sides (top, bottom and right side). The left adjacent column of stamps has perforations on three sides (top, bottom and right side).

The second partial imperforate error was offered for sale by Saskatoon Stamp Centre. Their catalogue states: "396 1932iv, IP 48c Queen Elizabeth Golden Jubilee IMPERFORATE LL IMPRINT BLOCK of 4, with perforations in left selvage only. Only a small number of sheets were found with and without part perfs. A DRAMATIC ERROR! XF NH CS \$3,000 (colour photo pg 54) (XF Imperf pair @ \$1,495)..... C\$2,950.00."<sup>[7]</sup>

This error from the illustration of a lower left corner block of stamps may be described as follows: The left hand column of stamps is imperforate on three sides (top, bottom and right side). The right adjacent column of stamps is imperforate on all four sides. The selvage on the left has the vertical and horizontal perforations.



**CANADA 1932a/iv 48c Queen Elizabeth Golden Jubilee IMPERFORATE Pane of 16 with perforations in left salvage only. Only a small number of sheets were found with & without part perfs. Stamped #450626 on gum side LL margin.**

What caused these errors? Their cause was the malfunction of the perforator. The first partial imperforate error described above indicates that the perforator did not make the last strike. In addition, if the first stamp in the pair is imperforate, as appeared on the left in the illustration, then the perforator made the second last or second strike but not the third last or third strike. The second partial imperforate error described above indicates that the perforator made the first (or last strike). As a result, there are only perforations on the selvage and left side of the first column of stamps.

These errors teach us a number of things. First, the stamps were perforated using a T-comb perforator. Second, the stamps were perforated sideways and not from top to bottom. Third, the stamps were perforated by a 1-comb T perforator (if the first illustration is correct). These observations can be deduced from the fact that a T-comb perforator perforates three sides of a stamp with each strike in the form of an upside-down T, the impression of the perforation and missing perforation appear on the sides, and the perforation is only on three sides of the first illustration (a 2-T-comb perforator perforates six sides at the same time). These errors, however, do not tell us offhand whether the stamps were perforated from the right side or left side of the sheet.

**VI. Print Shift Errors**

The print shift error was first observed by an illustration that appeared in the *Corgi Times*. It was later offered for sale by Saskatoon Stamp Centre. Their catalogue states: "391 1932 var1, PS 48c Queen Elizabeth Golden Jubilee MAJOR PRINTING & PERF SHIFT. Bottom margin single. Portrait appears shifted 6mm right. Actually the Gold, Brown, Perfs & Tagging printed last, were shifted left. A DRAMATIC ERROR! VF NH Unlisted (colour photo pg. 54) .....C\$595.00."<sup>[7]</sup>



CANADA 1932 var1 48c Queen Elizabeth Golden Jubilee MAJOR PRINTING & PERF SHIFT. Bottom margin single. Portrait appears shifted 5mm right. Actually the Gold, Brown, Perfs & Tagging printed last, were shifted left.

An entire pane with the print shift was recently offered for sale by John H. Talman Auctions. Their catalogue describes it as: "269, USC #1932 Var. 2002 48c QEII Golden Jubilee tagging normal along perfs. but background and Queen dramatically shifted to right and gold printing on Queen's face. Background of maple leaves shown on white where Queen would normally be placed. Imprint pane of 16. First we have heard of this. VFNH. (see Unitrade #1516i for a shift on another stamp) .....E\$2500+"

This misprint may be described as a shift of the entire image of the portrait of Her Majesty, the maple leaf background and maple leaf on the selvage to the right by 6mm. In addition, the

bar code, colour code and marginal inscriptions are also shifted to the right by 6mm. The perforation pass through the shifted image. However, the tagging and perforation are in the right position. Further, the ochre or gold coloured background appears on part of the portrait of Her Majesty on the right.

What caused this error? It was caused by a shift of one of the printing plates during the printing process. This particular error teaches us a number of things: First, the stamp was printed using more than one plate. Secondly, it indicates which plate was used first. And thirdly, it indicates which colours or impressions were made with which plate.

These observations can be deduced from the fact that there was a shift of one plate, as partial print shifts do not appear if one plate was used. The portrait impression was made second as the impression of the other colour appears over top in certain areas and the ochre or gold and orange-brown colour were printed with the second plate together with the bar code, colour code and marginal imprint.



A print-shift error with a slight twist appeared

on a 48-cent stamp with a similar design issued for the Coronation of Her Majesty. Eastern Auctions Ltd. described it in their catalogue as: "682, S #1987var, 2003 48c Coronation Complete plate inscription sheet of 16 stamps, with purple maple leaf background and tagging shifted (1mm up) onto top margin and also the purple colour dot (traffic light) is shifted in all four corners, unlisted, VF NH.....(Photo) Est. 1,250.00."<sup>[6]</sup>

In this case, not only is the purple leaf background shifted up but also the tagging. It reveals

CANADA 1932 var1 48c Queen Elizabeth Golden Jubilee MAJOR PRINTING & PERF SHIFT. Portrait appears shifted 6mm right. Actually Gold, Brown, Perfs & Tagging printed last, were shifted left. Two colour dots appear missing.



CANADA 1932 var1 48c Queen Elizabeth Golden Jubilee MAJOR PRINTING & PERF SHIFT in LR B/4. Portrait appears shifted 6mm right. Actually Gold, Brown, Perfs & Tagging printed last, were shifted left. Two colour dots appear missing.



Normal

on this stamp that have appeared to date one cannot make any further deductions. For example, if the first partially imperforate pair does appear as part of an entire pane, one should be able to deduce how the perforator operated. Did the perforator make an error, correct itself and then make an error again and what happened next? Further, by trying to plate the panes in this error sheet one would be able to get a deeper understanding about these errors. It could also provide us with a better estimate of the number of fully imperforate errors. Were there two sources of errors, a sheet with all fully imperforate panes and also a sheet with partial and fully imperforate errors? Perhaps, in due course, more light will be shed on these errors as they come up sale.

### VIII. Concluding Remarks

The Golden Jubilee errors are quite spectacular. They provide philatelists with important information about these stamps not made available by the stamp printers. In general, printing and perforating errors can provide a rich source of information. Apart from being conversation pieces, these errors enable us to enjoy and study philately and place it on a sound analytical and educational foundation.

### ENDNOTES/BIBLIOGRAPHY

1. Queen Elizabeth II, The Golden Jubilee of Her Majesty the Queen, *Details*, January to March 2002, Volume XI, No. 1, pp. 10-11; and 50th Anniversary of the Coronation of Queen Elizabeth II, *Details*, April to June 2003, Volume XII, No. 2, pp. 14-15.
2. *Best Buys from the Boss # 100*, Eastern Auctions Ltd.
3. *Eastern Mail Sale*, December 14th 2005, p. 13.
4. *Eastern Mail Sale*, June 4th 2008, p. 19 and p. 32
5. *Public Auction, Eastern Auctions Limited*, March 24th 2007, p. 127.
6. *Public Auction, Eastern Auctions Limited*, March 4th 2006, p. 137 and p. 144.
7. *Saskatoon Stamp Centre, Catalogue #250*, p. 54 and p. 64.
8. *Stamp Sale, John H. Talman Auctions, Sale No. 278*, 2008, p. 25 and back cover.
9. Monteiro, Joseph, *Canadian Postage Stamp Errors of the Queen Elizabeth II ERA*, Volumes I, II and III, 2007.

that when there is a vertical or horizontal shift of the tagging plate only one of the tagging bars will be shifted, not both.

Only if the tagging plate is shifted, both vertically and horizontally, can one get a shift of both the vertical and horizontal tagging. It also teaches us that if this stamp was tagged only vertically, and not on all four sides, there would be no tagging error.

### VII. Are There Other Lessons To Be Learned?

There are also other lessons to be learned. Unfortunately, from the illustrations of the errors



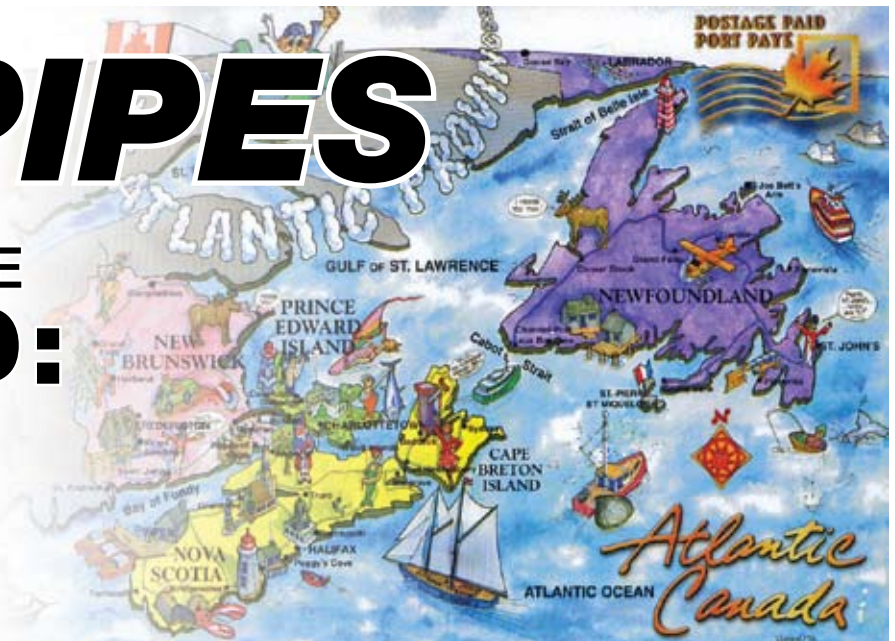
CANADA 1932 var1 48c Queen Elizabeth Golden Jubilee MAJOR PRINTING & PERF SHIFT. LL corner single with colour dots. Portrait appears shifted 5mm right. Actually the Gold, Brown, Perfs & Tagging printed last, were shifted left.

# BAGPIPES

## AROUND THE WORLD: WORLD:

### PART 1

By Alena Pascual



Most Canadians are without a doubt familiar with the Scottish bagpipe. Pipe bands exist throughout the country. Solo pipers or pipe bands frequently appear in processions and ceremonies, both military and civilian.

Highland bagpipes are believed to have been brought to Canada by the earliest Scottish settlers in Nova Scotia. One of the two Canadian stamps which include bagpipes is Scott #619, issued in 1973, to mark the bicentennial of the arrival of Scottish immigrants in Pictou, Nova Scotia. The settlers came ashore from the *Hector* accompanied by a piper.



Highland games and activities, which originated among the Scots' Celtic ancestors, were an integral part of the Scottish Highlands for centuries, with celebrations featuring track and field competitions, Highland dancing, piping, and drumming. The tradition continues in Canada today. Highland games are held across the nation, notably in the Ontario towns of Maxville and Fergus, as well as in Antigonish, Nova Scotia, which claims to host the longest-running continuous Highland Games in Canada, dating back to 1863.

The 1997 Highland Games stamp (Scott #1655), issued in honour of the 50th anniversary of the Glengarry Highland Games in Maxville, includes piper John Hugh MacDonald, who was a competitor at the 1996 Maxville Games. Shown on the



front of the OFDC is an older photo of a group of four men in Highland uniform dancing, accompanied by a piper. Highland

dances were originally celebrations of victorious battles, performed only by men. Today's dances, usually performed by young females, are strictly ceremonial. A photo of the Halifax Regional Police Services Pipes and Drums Band, taken at the 1996 Maxville Games, appears on the back of the OFDC. The July-September 1997 Collector's Pack envelope features Mr. MacDonald on the front.

In 1935, as part of Sydney's 150th anniversary celebrations, a number of special flights between Halifax and Sydney took place from July 29 to August 3. Special cachets were authorized by the Post Office Department, to be applied at both cities, with a different cachet for each day for each city. Sydney's July 29 design included a piper.





A prepaid Canada Post/Postcard Factory post card which shows a map of the Atlantic Provinces (Ref: POST57-ATC209, issued in 1999) includes a piper on the Nova Scotia portion. Another version of the same card (Ref: POST57-ATC209 / SKU: 260061), which includes quite a few variations, has also been issued.

Canadian piper James Richardson appears on a Canadiana item issued on October 24, 2007, St. Vincent Scott #3592, commemorating the Victoria Cross, the British and Commonwealth's highest decoration for gallantry in the face of the enemy. Richardson, the only Canadian piper ever awarded the VC, served with the 16th Battalion (Canadian Scottish) Canadian Expeditionary Force. He died at Somme in October 1916. The Highland bagpipe has been a martial instrument at least from the 16th century; the sound of the bagpipe is known to have a profound effect on troops in battle. Richardson's piping spurred Canadian soldiers who were pinned down at Regina Trench to break through a barbed wire enclosure and capture the position. After piping for some 10 minutes, he put down his pipes to help carry wounded soldiers to the trenches; when he later went back to retrieve his pipes, he was killed. In 2006, his pipes were repatriated from Scotland and placed on display at the BC Legislature. ☒

#### REFERENCES

Cocks, William A. et al. "Bagpipe." *New Grove Dictionary of Music and Musicians*/edited by Stanley Sadie. 2nd ed. New York: Grove's Dictionaries, 2001.

"Highland Games in Canada." *The Baton*, no. 89, November 1997, pp. 33-34.

Meissner, Dirk. "Hero's Bagpipes Home." *Toronto Star*, November 9, 2006, p. A14.

Waterhouse, David. "Bagpipe, Great Highland." *Encyclopedia of Music in Canada*. 2nd edition. Toronto: University of Toronto Press, c1992. (also available online)



# PHSC

APS Affiliate 67;  
PHS Inc. Affiliate 5A;  
RPSC Affiliate 3

## THE POSTAL HISTORY SOCIETY OF CANADA INVITES APPLICATIONS FOR MEMBERSHIP.

The Postal History Society of Canada promotes the study of the postal history of Canada and its provinces. It publishes the award-winning quarterly PHSC Journal, whose contents range from fully-researched feature articles to items of current interest – from the pre-stamp era, postmark specialties, and regional histories to modern mail mechanization.

Six different study groups are devoted to the detailed examination of various specialized aspects of postal history. Visit our website at [www.postalhistorycanada.org](http://www.postalhistorycanada.org) for more information on the Society and study groups. Don't miss the Specialized Interests section currently featuring Shipping Tables for Canada's Pacific Maritime Mails, a listing of New Post Offices in Canada since November 2001 and our new sister site [www.postalhistorycanada.net](http://www.postalhistorycanada.net) where you will find postmark databases, post office listings and study group publications.

Membership dues are \$25.00 per year in Canada. For a membership application form please visit our website or contact the Secretary, Stéphane Cloutier, 255 Shakespeare St. Ottawa, ON K1L 5M7 Canada. Email: [cloutier1967@sympatico.ca](mailto:cloutier1967@sympatico.ca)



**SPARKS-AUCTIONS.COM**

# Transcribing Sounds

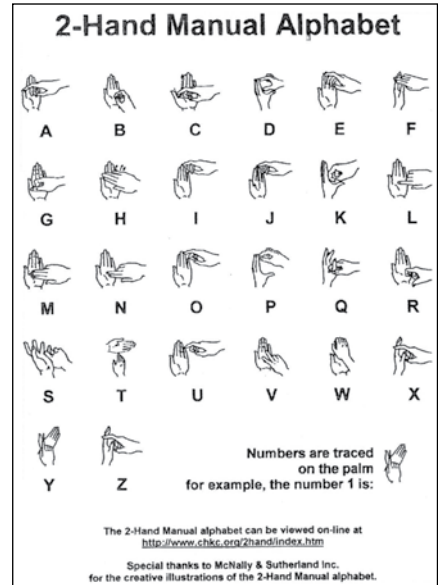
by Michael Madesker, RDP, FRPSC

## Sign Language

Sign languages used by and developed by deaf people are, according to Gallaudet University researchers, natural languages used by them in everyday life. Code systems are developed by hearing people to represent spoken languages in a manual form.

A sign language is a complete language with its own syntax and grammatical rules. The sign in sign language or in the verb signing refers to the method by which letters, symbols, or words are conveyed and not to the concept of gesturing. Sign language incorporates facial expressions, body movements and gestures to a far greater extent than spoken languages where it is merely an aid or mannerism.

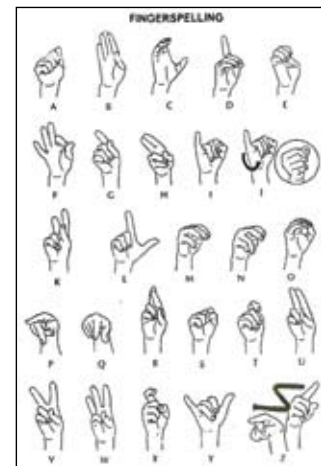
Dr. Karen Nakamura, in an article in the Deaf Resources Library, explains that sign languages are specific to their communities (as are spoken languages, thus the various accents, dialects and area specific idioms -MM). They are independent of the spoken languages of a country. An example cited is the British Sign Language, signed with two hands, whose syntax is closer to Japanese than to the English spoken in the United Kingdom. The American Sign Language, signed with only one hand, shares many terms with Old French Sign Language owing to the fact that one of its first teachers, innovators and formulators, was Laurent Clerc, a 19th century deaf Frenchman. The American and British Sign Languages have very little in common. This brings to mind an aphorism credited to Winston Churchill that U.S.A. and Britain are two countries divided by a common language.



Signing "love" using the two-hand system in the British Sign Language.



Fingerspelling "I Love You" in the American Sign Language.



## CLASSIFIED ADVERTISING ORDER FORM / BON DE COMMANDE-ANNONCES CLASSÉES

**RATES:** 10 cents per word; minimum charge \$3.00 per insertion. Boxed Classified \$12.00/column-inch. Please indicate desired heading. **Classified ads must be paid in advance.**

C.P. Classified Ads  
103 LAKESHORE RD. SUITE 202,  
ST. CATHARINES, ON L2N 2T6

CALL Jim at  
(905) 646-7744, ext 223  
FAX (905) 646-0995 or  
email: [jims@trajan.com](mailto:jims@trajan.com)

**TARIFS:** 10 cents le mot; tarif minimal: 3\$ par insertion. Petites annonces encadrées: 12\$ par pouce de colonne. Prière d'indiquer la rubrique désirée. **Les petites annonces sont payables d'avance.**

### Classification:

**ALL CLASSIFIED ADS MUST BE PREPAID.  
TOUTES LES ANNONCES CLASSÉES DOIVENT  
ÊTRE PAYÉES D'AVANCE.**

PLEASE CHECK ONE / PRIÈRE DE COCHER UNE CASE.

CHEQUE / CHÈQUE  MONEY ORDER / MANDAT  
make cheques payable to: / chèques payable à: Trajan Publishing



Card No. / no. de carte: \_\_\_\_\_

Exp. Date / date d'expiration: \_\_\_\_\_

Name / nom: \_\_\_\_\_

Signature: \_\_\_\_\_

Check your advertisement for accuracy of the first insertion. **THE CANADIAN PHILATELIST** cannot be responsible for the cost of more than one incorrect insertion. Vérifiez l'exactitude de l'annonce à sa première insertion. **Le Philatéliste canadien** n'est responsable que du coût d'une seule insertion erronée.

COPY CHANGES NOT ALLOWED DURING LENGTH OF AD'S RUN /  
AUCUN CHANGEMENT DE TEXTE N'EST AUTORISÉ PENDANT LA PARUTION  
DE L'ANNONCE.

Abbreviations, initials and phone numbers count as one word. / Les abréviations, initiales et numéros de téléphone comptent pour un mot.

3 \_\_\_\_\_  
6 \_\_\_\_\_  
9 \_\_\_\_\_  
12 \_\_\_\_\_  
15 \_\_\_\_\_  
18 \_\_\_\_\_  
21 \_\_\_\_\_

# OF ISSUES TO RUN IN / Parution dans: \_\_\_\_\_  
numéros de la publication.

TOTAL # OF WORDS / Nombre de mots: \_\_\_\_\_

= TOTAL COST / Coût total \$ \_\_\_\_\_

All ads require name, address and phone number with order; they do not need to be used in your copy.

Pour commander, indiquez vos nom, adresse et no. de téléphone, qu'il n'est pas indispensable d'utiliser dans le texte de l'annonce.



## Belgian Air Mail Stamps

Six of the first seven Belgian air mail stamps have varieties. All seven stamps have a similar format, so the locations of the three varieties covered in this article are marked by white circles in the same illustration.



Cloud at the left on horizon.

The 50c blue has a variety with a cloud along the horizon at the left. The mint hinged (MH) variety is 25 times the catalogue price of the ordinary stamp and the used stamp multiple is 32. The adjacent image shows the apparent cloud in detail.

Some copies of the 1.50 franc black brown have a break in the circle around the "1.50 Fr" on the right side. The adjacent image shows the break. The multiple is about 5 for MH and 3.3 for a used stamp. The 1.50 franc was surcharged 1 franc in 1935 and the same variety occurs on the surcharged stamps. For the surcharged stamps, the multiple is about 5 for MH and 3 for used stamps.



Break in value circle.



Bomb from plane.

The 5 franc stamp brown lake was released 30 April, 1930, and a 5 franc dark violet on 5 December of the same year. Both colours have the same printing variety, a bomb dropping from the plane, which is shown in the nearby image. The multiple for the brown lake stamp is 12.5 for MH and 16 for used. For the dark violet stamp, the multiples are about 2 for both MH and used. In 1935, the brown lake stamp was surcharged 4 francs, and the same variety occurred. On the 1935 stamp, the multiples are about 5 for either MH or used stamps.



White spot on lower L.

While there are exceptions, most Belgian varieties are relatively inexpensive. The small multiples given above are typical, and the basic stamps are inexpensive to begin with. For example, the 2000 Scott Postage Stamp Catalog™ lists the 50c blue above at \$0.40 either MH or used. The used-stamp multiple of 32 only raises the catalog value to \$12.80.

*As usual, colour images are available to those who e-mail me with requests (napoleon@voyager.net).*

**ATTENTION DEALERS,  
AUCTION HOUSES!**

**Reach hundreds of  
potential new customers  
with each issue of  
*The Canadian Philatelist*.  
Details coming soon.**

### CANADA & PROVINCES

Visit our Web site at: [www.canstamp.com](http://www.canstamp.com)  
or order a FREE catalogue by mail or e-mail.

Bi-Monthly 3000+ lot auctions specializing in items from \$10 to \$10,000.



### Coates & Coates Philatelist

Box 114, Thorold, Ontario L2V 3Y7 Canada  
Ph: 905-227-8617 • Fax: 905-227-9029  
[canstamps@gmail.com](mailto:canstamps@gmail.com)



## PRESIDENT'S page la page du PRÉSIDENT

by / par Rick Penko

### THE IMPORTANCE OF BEING ROYAL

Once again my trusty email box has posed an interesting question. A writer wanted to know why we attach ourselves to the word "Royal" in our society's name. Are we not independent enough to shed any connection to the British Monarchy and Crown?

Hmm, well let's look at it. Canada is part of something called the British Commonwealth. Historically, Canada was first settled by the French and British. As history points out the British eventually took control of all of Canada. Following Confederation in 1867 Canada joined the League of Nations independently of Britain, and in 1931 the Statute of Westminster affirmed the Dominion of Canada's independence yet it remained part of the British Commonwealth. Since early British rule, Canada has maintained the British Parliamentary system whereby we have the Governor General as our Head of State and Queen's representative.

This is part of our heritage. What more fitting way is there than to have our society linked with the Royal accreditation? Perhaps if we as a people decide we would prefer a president and congress, then it would be time to reconsider, along with other organizations such as the Royal Canadian Mounted Police, Royal Winnipeg Ballet or even our sister philatelic group the British North America Philatelic Society.

Another interesting point would be the fact that if it wasn't for Sir Rowland Hill, a Brit, who first devised a plan to prepay mail by the use of adhesive labels, we would not be enjoying our wonderful hobby today.

Does the added word "Royal" preclude or prevent anyone from enjoying the world's largest hobby? I doubt it. Tradition and heritage are sadly lacking in today's society of instant everything. Oddly enough I am writing in a language called English, something exported from Britain. We are who we are and, dare I say it, proud of it, eh?

This year, we will be celebrating 50 years with the Royal accreditation. A very commendable achievement, to say the least!

### ROYAL\*2009\*ROYALE

June 12-14 is just around the corner. I hope you are planning to attend our next Royal hosted by The St. Catharines Stamp Club. I know Stuart Keeley and his crew are hard at work to make our 81st annual convention a "don't miss" event. For further information, go to [www.royal2009.ca](http://www.royal2009.ca) to get all the details. As always, I look forward to seeing all of you at our next Royal. ☒

### L'IMPORTANCE D'ÊTRE ROYAL

Encore une fois, ma fidèle boîte de courriel a soulevé une question intéressante. L'auteur de ce courriel voulait savoir pourquoi le mot « Royal » est-il rattaché au nom de notre société. Ne sommes-nous pas assez indépendants pour mettre de côté tout lien avec la monarchie britannique et la Couronne?

Hum! Voyons voir. Le Canada est membre de ce que nous appelons le Commonwealth britannique. Historiquement, il a été colonisé par les Français et les Britanniques. Comme le démontre l'histoire, les Britanniques ont fini par prendre le contrôle du Canada. Après la confédération en 1867, le Canada s'est joint à la Société des Nations, indépendamment de la Grande-Bretagne, et en 1931, le Statut de Westminster a affirmé l'indépendance du Dominion du Canada, mais ce dernier est demeuré membre du Commonwealth britannique. Depuis le début de la domination britannique, le Canada a adopté et conservé le régime parlementaire britannique avec un gouverneur général comme chef de l'État et représentant de la reine.

Cela fait partie de notre patrimoine. Dès lors, quoi de plus judicieux que de lier notre société à l'agrément Royal? Peut-être que si en tant que peuple, nous décidions que nous préférons avoir un président et un congrès, il serait temps de penser à renommer notre société et d'autres organismes, comme la Gendarmerie royale du Canada, le Royal Winnipeg Ballet ou notre organisme sœur, la British North America Philatelic Society.

Un autre point intéressant est le fait que n'eut été de sir Rowland Hill, un Britannique, qui le premier a pensé à une façon de prépayer les services postaux en utilisant des étiquettes collantes, nous n'aurions pas le passe-temps merveilleux qui nous procure tant de plaisir.

Le mot « Royal » dissipe-t-il ou empêche-t-il le plaisir que nous avons à pratiquer le passe-temps le plus populaire de la planète? J'en doute. La tradition et l'héritage sont deux choses qui font tristement défaut dans notre société où tout est instantané. Assez curieusement, j'écris dans une langue appelée, anglaise, qui a été importée de Bretagne. Nous sommes qui nous sommes et oserais-je dire, fiers de l'être, non?

Cette année, nous célébrerons 50 ans d'agrément Royal. Une réussite pour le moins digne de mention!

### ROYALE\*2009\*ROYALE

Les dates du 12 au 14 juin arrivent à grands pas. J'espère que vous prenez les dispositions nécessaires pour assister à notre prochain congrès Royal, organisé par le St. Catharines Stamp Club. Je sais que Stuart Keely et son équipe travaillent dur pour faire de notre 81e congrès annuel un événement à ne pas manquer. Pour de plus amples renseignements, visitez [www.royal2009.ca](http://www.royal2009.ca) où vous trouverez tous les détails. Comme toujours, je suis impatient de vous rencontrer tous à notre prochain congrès Royal. ☒

# MEMBERSHIP report

## Des nouvelles de nos MEMBRES

### NEW MEMBERS / NOUVEAUX MEMBRES

The following applications were received and are here-with published in accordance with the Constitution. If no adverse reports are received within 30 days of publica-tion, applicants will be accepted into full membership. Any objections should be sent to the National Office, P.O. Box 929, Station Q, Toronto, ON M4T 2P1.

Les demandes d'adhésion ci-dessous ont été reçues et sont publiées en conformité avec la constitution. Si aucun commentaire n'est communiqué au Bureau national, (C.P. 929, Succursale Q, Toronto, ON, M4T 2P1) d'ici 30 jours, les adhérents seront acceptés comme membres.

(M) minor - activity guaranteed by parent or guardian / mineur - activités philatéliques garanties par un parent ou un tuteur.

### INDIVIDUAL MEMBERS / MEMBRES À TITRE PERSONNEL

I-28938 • Mr. Kenneth David

*Canada, Commonwealth, World War II era world-wide*

I-28939 • Mr. Norbert Miersch

I-28940 • Mr. Anestis Karagiannidis

*Canada: #387 & Pence Issues. Greece: Small Hermes Heads, 1866-1900*

I-28941 • Mr. Michael Queale

I-28942 • Mr. Michael Power

I-28943 • Mr. Robert Stanlick

I-28944 • Ms. Brenda Bannerman

I-28945 • Mr. Wilfred Boddener

I-28946 • Mrs. Lesley Patterson

L-28948 • Mr. Ernie Nyitrai

### REACTIVATED MEMBERS / MEMBRES RÉINTEGRÉS

I-21552 • Ms. Barbara Weiss

### RESIGNED MEMBERS / MEMBRES DÉMISSIONNAIRES

I-20635 • Mrs. Muriel N. Schmidt

I-22799 • Mr. George O. Sinka

CHANGE OF ADDRESS ? Changes can be made on-line at [www.rpsc.org](http://www.rpsc.org) "Members Login" or by contacting the National Office.

VOUS CHANGEZ D'ADRESSE? Effectuez le changement en ligne à [www.rpsc.org](http://www.rpsc.org) "Members Login" ou en prenant contact avec le Bureau national.

I-22329 • Mr. Richard Burda

I-26932 • Mr. Raymond Picard

I-27032 • L.Col Peter Webber

I-27883 • Mr. Steve Soros

I-28412 • Mr. Nettie Geofroy

### DECEASED MEMBERS / MEMBRES DÉCÉDÉS

I-24125 • Mrs. Evangeline I. Goodfellow

I-28456 • Mr. Walter Moore

### In Appreciation...

...and with thanks to the following members who have made a donation to The RPSC in 2008.

### Nous désirons exprimer notre reconnaissance....

... et tous nos remerciements aux membres suivants qui ont fait un don à la SRPC en 2008.

William S. Aaroe  
Ross W. Allen  
Akthem Al-Manaseer  
Robert G. Anderson  
Dennis Auner  
W. Robert Avis  
Malcolm Back  
Mark Banchik  
Ian Bate  
John B. Beaman  
John E. Beattie  
Jacques Bellefleur  
Donald Billett  
Dieter Bortfeldt  
Kenneth Bromley  
Walter R. Brookhart  
Ken Brown  
Maurice Burseay  
Aidan Butterfield  
Luis M. Calleja  
John Casson

Douglas Stewart  
Cayer  
Charles Colomb  
Peter Colwell  
John S. Cooper  
Joseph Craig  
J.V. Raymond Cyr  
Jan J. Danielski  
Raymond Dubeau  
Ed Dykstra  
David S. Fearon  
Karel Fischer  
Charles Flynn  
Andre Giguere  
Edward Grandmaison  
Ralph E. Green  
Robert Grob  
Eric F. Grove  
D. Robin Harris  
Steve Hilditch  
James Iormetti

Leonard Kaiser  
Stanley J. Kalabza  
Istvan Kecsedy  
Ralph D. Keir  
Peter Kritz  
Randy Kyrlyluk  
Leon J. Lachance  
Patrick Larkin  
James E. Lawrence  
Albert N. Leger  
Arthur Liberman  
Peter E. Loucks  
Ronald Lowe  
Alyn Lunt  
M. S. Marchant  
Christopher Marston  
Peter McArthur  
John Clifford  
McCuaig  
Marian K. M.  
McEwen

Jeff W. Melski  
James W. Mixer  
Charles G.C.  
Mountain  
Stephen Osborne  
Jacques Page  
Jean Panneton  
Ted L. Papucciyan  
Gordon Payne  
George F. Pepall  
Jan Pereboom  
Del D. Peters  
Garfield J. Portch  
Robert J.H. Poulin  
George E. Prior  
Lorraine Rasmussen  
Isabel Richardson  
J. Douglas Riendeau  
Harry Riva  
Samuel Rock  
Hart Schubert

David F. Sessions  
Anthony Shaman  
John Sheffield  
Caron Y. Sherk  
Shirley Shorter  
Maurice Shriqui  
Robert A. Spencer  
Royce D. Spens  
Gordon A. Sudds  
Nicholas Tammaro  
John D. Thompson  
Donald Thompson  
Albert Thornhill  
Bryan Travers  
David Tribe  
Colin Troup  
Donald A. Ure  
Bob Van Sickle  
Joseph G. Vincent  
Hans Wichern  
Neilson Wood, Jr.

We also wish to acknowledge donations from the Greater Toronto Area Philatelic Alliance as a result of ROYAL\*2007\*ROYALE and the Nova Scotia Stamp Club following their successful 2008 NOVAPLEX.

Nous tenons aussi à rendre hommage à la Greater Toronto Area Philatelic Alliance pour le don qu'elle a fait à la Société comme suite à ROYAL\*2007\*ROYALE et au Nova Scotia Stamp Club, qui a également fait un don après une exposition NOVAPLEX réussie.



## MESSAGES from the National Office MESSAGES du Bureau national

by / par Peter Butler,  
Director, National Office / directeur, Bureau national

Here are five messages of importance for members. Please note the following:

### **Membership Renewals using PayPal:**

We have recently added PayPal as another way for members to use our website to pay their annual dues. Many members use PayPal for a variety of transactions for society memberships, eBay payments and dealer purchases. Now you can pay your RPSC annual membership renewal, using this easy and secure procedure.

You will have no problem going through the process. Just follow these easy steps:

- Go to [www.rpsc.org](http://www.rpsc.org) and on the home page. Go to members Login (beneath, it reads renew membership)
- Enter your membership number and password. (If it's your first visit to the website and you don't have a password, go to the right hand side of the screen and click on, Don't have an account?... and follow the steps.
- Continue to login and read the message below the login box, then go into my profile/renew on line.
- Choose method of payment (VISA American Express, and now PayPal) and follow the directions.

While you are on the site, why not review your information to make sure it's up-to-date?

There is no extra charge to make this payment. In fact, it is cheaper for us to offer this payment alternative than the other choices. You will actually be saving us money!

### **Did you miss the November/December issue of TCP?**

In the mailing of the November/December TCP, a printing error on some of the address labels left out the subscriber's name line. For most addresses, it didn't matter. It was still delivered but if your copy goes to General Delivery or to a Rural Route address, it was "undeliverable" and was sent to Canada Post, perhaps to something like a Dead

Voici cinq messages importants pour les membres. Veuillez en prendre note :

### **Renouvellement des adhésions au moyen de PayPal :**

Nous avons récemment ajouté PayPal aux modes de paiement par Internet de la cotisation annuelle. De nombreux membres utilisent Pay Pal pour faire toutes sortes de transactions, payer leur adhésion à une société, effectuer des paiements ou faire des achats sur eBay. Vous pouvez maintenant payer votre renouvellement annuel à La SRPC en suivant cette procédure simple et sécuritaire.

Vous n'aurez aucune difficulté à réaliser l'opération en suivant les étapes faciles suivantes :

- Rendez-vous à l'adresse [www.rpsc.org](http://www.rpsc.org), la page d'accueil de notre site Web, et cliquez sur l'onglet Members' Login (sous lequel vous verrez « renew membership »).
- Entrez votre numéro de membre dans la case du haut « Member number » (n'inscrivez que les chiffres qui suivent le trait d'union) et votre mot de passe dans la case « Password ». S'il s'agit de votre première visite ou que vous n'avez pas de mot de passe, regardez vers la droite de l'écran où vous trouverez « click here to register » au sous-titre Don't have an account? Suivez ensuite les étapes indiquées.
- Lisez le message qui se trouve sous la fenêtre d'ouverture de session (Login), puis allez à My Profile/Renew on line.
- Sélectionnez RENEW MEMBER..., vérifiez l'exactitude de vos renseignements et cliquez sur « Continue ».
- Choisissez votre mode de paiement (VISA, American Express ou, maintenant, Pay Pal) et suivez les instructions.

PayPal n'occasionne aucuns frais. En fait, cette forme de paiement nous coûte moins cher que les autres. Vous nous aiderez donc à économiser!

### **Avez-vous manqué le numéro de novembre-décembre du Philatéliste?**

Dans l'envoi postal du numéro de novembre-décembre, en raison d'une erreur d'impression, le nom du destinataire ne figurait pas sur certaines étiquettes d'adresse. Dans la plupart des cas, cela a été sans conséquence et l'abonné a reçu son exemplaire, mais dans le cas de ceux qui ont une adresse, poste restante ou route rurale, l'envoi a été classé « non distribuable » et a été retourné à Postes Canada, peut-être à un endroit du genre bureau des rebus. Le Bureau national a été avisé du fait

Letter office. The National Office received communication that 24 subscribers didn't receive their magazine. We contacted the mailing company who was aware of the glitch. Webco sent us extra magazines requesting that we send out the extra copies and offered to pay the extra postage. If you didn't get your copy of the Nov/Dec issue, it's on its way to you, in a real envelope with real stamps, with apologies from Webco!

## **Share With a Friend and Help The RPSC Grow**

A revised application for membership page has been included in this issue and along with it is an invitation to "Share with a Friend" membership application. It's just one more way to help the Society grow and you benefit from your initiative by receiving a discount on your next renewal. John Sheffield, RPSC Director and a member of the Management Team, created this initiative. We hope it generates some new members for The RPSC.

## **Appreciation for Donations**

We would like to take this opportunity to extend our sincere appreciation to almost 50 members of the Society for making a donation in addition to their annual payment of their renewal fees in 2008. Their generosity, whether large or small, is deeply appreciated and their names are listed on the Membership Report page with our thanks.

## **The RPSC Constitution and Bylaws**

As you are aware, through previous messages from the President and the National Office, the Management Team appointed at the last ROYAL Board Meeting in Quebec has been very active. Along with their resource leader David G. Jones from Ottawa, the Team has prepared a Strategic Plan for the Society, established a Nomination Committee and is recruiting new directors to be elected to the Board at the next ROYAL in St. Catharines. The Team is also drafting a series of amendments and additional by-laws to be presented at the Annual Meeting. Drafts of their work will be printed in the next TCP and posted on our website. We will also be posting on the website, in the near future, copies of the founding documents (Constitution and Bylaws) for members to peruse in preparation for the Annual General Meeting as announced in the last TCP. These initiatives will comply with the need stated in the founding documents to publish the proposed changes 21 days in advance of the General Meeting for members to read. ☒

que 26 abonnés n'ont pas reçu leur revue. Nous avons pris contact avec l'entreprise postale, qui était au courant de ce contretemps. Webco nous a envoyé des revues supplémentaires, nous a demandé de les expédier nous-mêmes et nous a offert de payer les frais postaux. Si vous n'avez pas reçu votre exemplaire du numéro de novembre-décembre., vous le recevrez bientôt, dans une vraie enveloppe avec de vrais timbres et les excuses de Webco!

## **Partagez avec un ami et aidez la SRPC à croître**

Vous trouverez une nouvelle initiative pour accroître le nombre de demandes d'adhésion quelque part dans le présent numéro. Il s'agit d'une invitation à remplir « Partagez avec un ami », une demande d'adhésion à La SRPC. Ce n'est là qu'une autre façon d'aider La Société à croître et vous en profiterez en recevant un rabais sur votre prochain renouvellement. John Sheffield, directeur de La SRPC et membre de l'équipe de gestion, est à l'origine de cette initiative. Nous espérons qu'elle attirera de nouveaux membres à La SRPC.

## **Reconnaissance pour les dons**

Nous désirons saisir l'occasion d'exprimer notre reconnaissance sincère aux plus de 100 membres de La Société qui ont fait un don en plus du paiement annuel de leur cotisation de 2008. Leur générosité, que le don ait été modeste ou considérable, nous touche beaucoup et leur nom est inscrit dans la liste qui est à la page « Des nouvelles de nos membres » avec nos remerciements.

## **Constitution et règlements de La SRPC**

Comme vous l'avez appris, par les messages précédents du président et du Bureau national, l'équipe de gestion, nommée à la dernière réunion du conseil d'administration, lors du rassemblement ROYAL, à Québec, a été très active. L'équipe a préparé un plan stratégique pour la société avec son chef des ressources, David G. Jones, d'Ottawa. En effet, elle a mis sur pied un comité des nominations et recruté de nouveaux directeurs qui seront élus à la réunion du conseil d'administration qui se tiendra dans le cadre du prochain congrès ROYAL à St. Catharines. L'équipe s'affaire également à rédiger des modifications et des règlements additionnels qui seront proposés à l'assemblée annuelle. Ces documents seront imprimés dans le Philatéliste canadien et affichés dans notre site Web.

Nous afficherons également dans notre site Web, dans un proche avenir, nos documents fondateurs (constitution et règlements) afin que les membres puissent les lire attentivement pour se préparer en vue de l'assemblée générale annuelle du 13 juin 2009, tel qu'annoncé dans le dernier numéro du Philatéliste. Ces initiatives seront conformes à la nécessité, dont font état les documents fondateurs, d'informer les membres de tous changements vingt et un (21) jours avant l'assemblée générale.

Ceux qui n'ont pas accès à un ordinateur ou qui n'ont pas de capacité de téléchargement pourront se procurer un exemplaire papier des documents fondateurs au Bureau national. Veuillez joindre un chèque de 5,00 \$ à votre demande afin de payer les coûts d'impression et d'expédition. ☒

# coming EVENTS CALENDRIER

To have your event listed in this section of *The Canadian Philatelist*, please send all details to The RPSC National Office, P.O. Box 929, Station Q, Toronto, ON M4T 2P1. Details may be faxed to 1-888-285-4143 or e-mail to [info@rpsc.org](mailto:info@rpsc.org). Information will not be accepted by telephone. THIS IS A FREE SERVICE OF THE RPSC.

Pour que votre événement soit listé dans cette section du *Philatéliste canadien* veuillez envoyer tous les détails au Bureau national de la SRPC, C.P. 929, Succ. 'Q', Toronto, ON M4T 2P1. Les détails peuvent être faxés au 1-888-285-4143 ou par poste-électronique à [info@rpsc.org](mailto:info@rpsc.org). Aucune information ne sera acceptée par téléphone. CECI EST UN SERVICE GRATUIT DE LA SRPC.

## REGIONAL EVENTS / ÉVÉNEMENTS RÉGIONAUX

### FEBRUARY 21 FEVRIER, 2009

NIPEX 2009 Stamp Exhibition and Bourse, sponsored by the Niagara Philatelic Society will be held at Stamford Lions Club Hall, 3846 Portage Rd., Niagara Falls, Ontario. Hours are 10-5. Free admission. Further information from Ed Yonelinas email: [mastamps@computan.on.ca](mailto:mastamps@computan.on.ca) or phone: 905-262-5127

### MARCH 14 MARS, 2009:

OAKPEX 09, the annual show of the Oakville Stamp Club will be held from 10 am to 5 pm at St. Paul's United Church, 454 Rebecca Street, Oakville, ON. Featuring 16 dealers, circuit books, table auctions, refreshment booth and free stamp packets for juniors. Free admission and parking. For information please contact Bernd Duddeck at 905-845-8374 or [bpdduddeck@cogeco.ca](mailto:bpdduddeck@cogeco.ca)

### MARCH 21 MARS, 2009:

OXPEX/OTEX the annual exhibition and bourse of the Oxford Philatelic Society, which is celebrating its 60th anniversary, will be held from 9:30 am to 4:30 pm at the John Knox Christian School, 800 Juliana Drive, Woodstock, ON. Exhibits, dealers, youth area, prize draws, Canada Post counter, refreshments. Free admission and parking. For more information please contact David Ward, Chair, at 519-539-2221 or [ward2221@rogers.com](mailto:ward2221@rogers.com).

### MARCH 28 MARS, 2009:

KAPEX 2009 will be held from 9:30 am to 4:30 pm at the Evinrude Centre, 911 Monaghan Road, Peterborough, ON. For information contact Mr. Rick Stankiewicz at (705) 295-6158.

### APRIL 3-5 AVRIL 2009:

Lakeshore 2009, the Lakeshore Stamp Club's annual show and bourse will be held at the Sarto Desnoyers Community Center, 1335 Lakeshore Drive, Dorval, Quebec. Hours: Friday and Saturday: 10 am - 6 pm; Sunday: 10 am - 4 p.m. Competitive exhibits including one-page exhibits, 25 dealers (Canada and USA), club bourses, junior activities, souvenir covers, photo-stamps, illustrated postmarks and door prizes. Free admission and parking. Snack bar on premises. Information from Gary Misener @[gmisener@sympatico.ca](mailto:gmisener@sympatico.ca) or P.O. Box #1, Pointe-Claire Dorval, QC, H9R 4N5 / Lakeshore 2009, l'exposition annuelle du Club philatélique du Lakeshore se tiendra au Centre communautaire Sarto Desnoyers, 1335 Bord-du-Lac, Dorval, Québec. Horaire: vendredi et samedi: 10h00-18h00; dimanche: 10h00-16h00. Expositions de tous les niveaux y compris celles d'une seule page, 25 négociants (Canada et États-Unis), bourses du club, activités pour les jeunes, plis-souvenir, timbres-photos et oblitérations illustrées. Prix de présence. Entrée gratuite, stationnement gratuit, cafétéria. Renseignements: François Brisse ([fbrissee@sympatico.ca](mailto:fbrissee@sympatico.ca)), B.P. #1, Pointe-Claire Dorval, QC, H9R 4N5

### APRIL 4 AVRIL, 2009:

Lonpex 117, the London Philatelic Society's annual show and bourse will be held from 9:30 am to 4:30 pm in the Churchill Ballroom at the Ramada Inn, 817 Exeter Road, London, Ont., just north of the 401 and Wellington Road interchange. Featuring 12 dealers, club sales circuit, and prize draws. Free admission and parking. Information from Don Slaughter at [donslau@execulink.com](mailto:donslau@execulink.com)

### APRIL 17-19 AVRIL, 2009:

The CSDA's National Postage Stamp Show and the North Toronto Stamp Club's 66th Annual Exhibition will be held at the Queen Elizabeth Building, Exhibition Place, Toronto. Dealers from Canada, UK and USA. Also exhibits, stamps for kids, hourly draws, Canada Post and society tables. Show hours Friday 11 am to 6 pm, Saturday 10 am to 5 pm, Sunday 10 am to 4 pm. Info from secretary@csda-online.com

### APRIL 18, AVRIL, 2009:

Stampfest, the Kitchener-Waterloo Philatelic Society annual show and bourse will be held on Saturday, April 18, at the Community Christian Reformed Church 1275 Bleams Road, at Fischer-Hallman Road, Kitchener, Ontario. Hours: 10:00 a.m. to 4:00 p.m. Featuring an exciting dealer bourse, competitive exhibits, including one-page entries, free parking, free admission, hourly and special draws, stamp pull, lunch counter, and other surprises. For additional information phone Jim Oliver at 1-519-893-4092 or e-mail: [jimoliver10@hotmail.com](mailto:jimoliver10@hotmail.com)

### APRIL 25 AVRIL, 2009:

The Fredericton District Stamp Club's Second Annual Show will be held from 10 am to 4 pm at the Forest Hill United Church, 45 Kimble Court, Fredericton, NB. Non-competitive exhibits, dealers, Canada Post, youth table with free stamps for young collectors and door prizes. Free admission and parking. Info from Ron Smith at 506-453-1792 or [rsmith0225@rogers.com](mailto:rsmith0225@rogers.com)

### APRIL 25-26 AVRIL, 2009

Sudbury Stamp Show will be held from 10 am to 4 pm at Tom Davies Sq. Foyer, Sudbury, ON. Dealers and draws, free admission and parking. For more information e-mail Biff Pilon, Club President, at [stampless1@hotmail.com](mailto:stampless1@hotmail.com).

### MAY 1-3 MAI, 2009:

The Winnipeg Philatelic Society's Annual Bourse & Philatelic Exhibition - 2009 will be held from 1pm - 8 pm on Friday, 10 am - 6 pm on Saturday and 10 am - 4 pm on Sunday, at the Viscount Gort Hotel, 1670 Portage Ave., Winnipeg, MB R3J 0C9. Free parking, 10+ dealers, exhibits, youth area, show cover and BNAPS/SCC seminars. Info from Winnipeg Philatelic Society, Box 1425, Winnipeg MB R3C 2Z1 or society's web site [www.wps.mb.ca](http://www.wps.mb.ca).

### MAY 2 MAI, 2009

Saugeen Stamp Club is holding their show at Hanover Knights of Columbus Centre, 10-4 pm. Dealers, Door Prizes, Exhibits and youth table. Lots of free parking.

### MAY 3 MAI, 2009:

Mayday Stamp Show, the Stratford Stamp Club's annual show and bourse, will be held on Sunday 9:30 am - 3:30 pm, at the Kiwanis Community Center, 111 Lakeside Dr., Stratford, Ont. Featured are a Show cachet cover highlighting historical Stratford, a dealers' bourse, stamp exhibits and the Club's sales circuit (thousands of pages). Free admission and parking, wheelchair accessibility, and a lunch counter. Contact person: Richard Blackburn, tel: (519) 273-0429; email: [richard.blackburn@utorono.ca](mailto:richard.blackburn@utorono.ca)

### AUGUST 22 AOUT, 2009:

MUSPEX 2009 the 9th annual Muskoka Stamp Club exhibition will be held 10 am to 4 pm at the Muskoka Riverside Inn, 300 Ecclestone Drive, Bracebridge, Ont. Ten dealers, exhibits, silent auction, door prizes. Free admission and parking. Information from Larry Mathews @ [muskokapost@sympatico.ca](mailto:muskokapost@sympatico.ca).

### OCTOBER 24 OCTOBRE, 2009:

The Barrie District Stamp Club's 47th Annual Show and Dealers Bourse will be held from 10 am to 4 pm at the Army, Navy & Air Force Veterans in Canada Club, 7 George Street, Barrie, ON. Free admission. Further info from the Bourse Chairman, David Terry at [dgh.terry@gmail.com](mailto:dgh.terry@gmail.com).

## NATIONAL EXHIBITIONS / EXPOSITIONS NATIONALES

### MARCH 20-22, MARS, 2009:

The Edmonton Spring National Stamp Show 2009 will be held in the West Edmonton Mall Fantasyland Conference Centre, 3rd floor Europa Boulevard. Hours: Friday Noon - 6 pm, Saturday 10 am - 6 pm, Sunday 10 am - 4 pm. Exhibits, dealers, youth stamp room, circuit books, seminars, and banquet. For information contact Keith Spencer at (780) 437-1787 or at [keithr.spencer@shaw.ca](mailto:keithr.spencer@shaw.ca).

### MAY 2-3 MAI, 2009:

ORAPEX 2009, Ottawa's National Stamp Show, the 48th Annual Stamp Exhibition and Bourse with over 40 dealers and 150 frames of exhibits, will be held at the RA Centre Curling Rink, Saturday May 2, 10 am to 6 pm, and Sunday May 3, 10 am to 4 pm. The address is RA Centre, 2451 Riverside Drive, Ottawa, ON. Those wishing to exhibit should contact Tom Hare at [thare@sutton.com](mailto:thare@sutton.com). For bourse information please contact Stéphane Cloutier at [cloutier1967@sympatico.ca](mailto:cloutier1967@sympatico.ca). FREE admission and parking. Dick Malott, Publicity Officer at (613) 829-0280 or [toysoldier@sympatico.ca](mailto:toysoldier@sympatico.ca).

**MAY 15-17 MAI, 2009:**

ROPEX 2009, the Rochester NY Philatelic Association's annual show will be held at the ESL Sports Center on the campus of Monroe Community College at 2700 Brighton Henrietta Townline Road in the southern suburb of Henrietta. The hours for this APS World Series of Philately event are Friday 11 am - 6 pm, Saturday 10 am - 5 pm and Sunday 10 am - 3 pm. Information from Tom Fortunato @ stamptmf@frontiernet.net or www.rpastamps.org.

**JUNE 12-14 JUIN, 2009:**

ROYAL \*2009\* ROYALE, the Royal Philatelic Society of Canada's 81st Annual Exhibition and Convention will be hosted by the St. Catharines Stamp Club at the Parkway Convention Centre, 327 Ontario St., St. Catharines, ON on Friday June 12, 10 am to 6 pm, Saturday June 13, 10 am to 6 pm and Sunday June 14, 10 am to 4 pm. Daily admission \$2 and \$5 for the weekend. Close to the QEW. Over 200 frames, 40+ international dealers, youth area, seminars, Sunday afternoon auction and free parking. Information from Stuart Keeley at (905) 227-9251 or at stuart.keeley@sympatico.ca. Web site at www.royal2009.ca.

Dates and locations for forthcoming years: 2010, Windsor, Ontario (May 28-30)

2011, Dorval, Québec.

2012, Edmonton, Alberta (For info contact Christopher Miller, President, Edmonton Stamp Club at no.113@shaw.ca)

**SEPTEMBER 11-13 SEPTEMBRE, 2009:**

BNAPEX 2009 SEAWAYPEX the annual convention of the British North America Philatelic Society will be hosted by the BNAPS St. Lawrence Regional Group and the Kingston Stamp Club at the Ambassador Conference Resort, 1550 Princess

Street, Kingston, ON. Exhibits, 25 dealers, study group meetings, seminars, partners program, awards banquet. For more information please contact Don Ecobichon at e.ecobichon@sympatico.ca or Richard Weigand at rweigand@kos.net.

**SEPTEMBER 25-27 SEPTEMBRE, 2009:**

StampExpo 400: The Albany Quadricentennial Philatelic Exhibition, sponsored by the Federation of New York Philatelic Societies, will be held at the Empire State Plaza, Albany, NY. Exhibits, literature competition, US and UN post offices, society booths, youth activities, Court of Honour, displays from the Smithsonian's National Postal Museum, and 125-150 dealers from the USA, Canada and GB. Canadian exhibits welcomed. Hours: Friday 10 am - 6 pm, Saturday 10 am - 6 pm and Sunday 10 am - 4 pm. Contact is John Nunes at (518) 399-8395 or Nunesnook@aol.com. Web site is http://www.stampexpo400.org.

**MAY 1-2 MAI, 2010:**

ORAPEX 2010, Ottawa. Details to follow at a later date.

**APRIL 30-1 MAY, 2011 /**

**AVRIL 30-1 MAI, 2011:**

ORAPEX 2011, Ottawa. Details to follow at a later date.

**INTERNATIONAL EXHIBITIONS / EXPOSITIONS INTERNATIONALES**

**APRIL 10-16 AVRIL, 2009:**

CHINA 2009 World Stamp Exhibition will be held in Luoyang City of Henan Province. Canadian commissioner is John McEntyre, 707-3495 Mountain St., Montreal, QC H3G 2A5. Tel: (514) 845-2938. E-mail: jgmcentyre@hotmail.com. (Bulletin No.1 is available from the commissioner)

**JULY 30 - AUGUST 4, 2009 /**

**LE 30 JUILLET - LE 4 AOUT, 2009:**

PHILAKOREA 2009, the 24th Asian International Stamp Exhibition will be held at the Convention & Exhibition Center (COEX), Seoul, Korea. The exhibition is open to exhibitors who are members of FIAF (Federacion Interamericana de Filatelia) member countries. There is no Canadian commissioner for this exhibition.

**OCTOBER 21-25 OCTOBRE, 2009:**

ITALIA 2009 at Palazzo dei Congressi in Rome Italy under the patronage of the FEPA and recognition of the F.I.P. Canadian commissioner is Dr. Jan J. Danielski, 71 Gennela Square, Toronto, ON M1B 5M7. Tel: (416) 283-2047. E-mail: jjad@rogers.com.

**MAY 8-15 MAI, 2010:**

London 2010 Festival of Stamps will be held at the Business Design Centre, Upper Street, Islington, London N1. Details at www.london2010.org.uk. Canadian commissioner: Dr. Jan J. Danielski, 71 Gennela Square, Toronto, ON M1B 5M7. Tel: (416) 283-2047, e-mail: jjad@rogers.com.

**OCTOBER 1-10 OCTOBRE, 2010:**

PORTUGAL 2010, Parque das Nações, Lisbon, Portugal. Commissioner Charles J. G. Verge FRPSC, FRPSL, PO Box 66, Stn "Q", Toronto, ON M4T 2L7. Tel: (647) 344-0446 and E-mail cjgverge@rogers.com.

For a better turnout, have your club's event listed here. Please submit your show information at least eight weeks prior to the publication date that you want your first listing to appear.

*Share With a Friend* and help The RPSC grow  
*Partagez avec un ami* et aidez La SRPC à croître

Do you have stamp-collecting friends who are not members of The Royal Philatelic Society of Canada? Provide their name and address or pass along this copy of The Canadian Philatelist to them. Have them complete and return the information below. place your name and RPSC member number (found above your name on the address label of this magazine) in the "referred by" area. For every new member you recruit we'll credit your next year's membership with \$5.

Avez-vous des amis philatélistes qui ne sont pas membres de La Société royale de philatélie du Canada? donnez-nous leur nom ou remettez-leur cet exemplaire du Philatéliste canadien. Demandez-leur de remplir et de retourner le formulaire de renseignements qui suit. Inscrivez votre nom et votre numéro de membre de La SRPC (que vous trouverez au-dessus de votre nom sur l'étiquette d'adresse apposée à la revue) dans la case « Recommandé par ». Pour chaque nouveau membre que vous recruterez, nous vous accorderons un rabais de 5,00 \$ sur votre prochaine cotisation.

Name / Nom : \_\_\_\_\_

Address / Adresse : \_\_\_\_\_

City / Ville : \_\_\_\_\_

Province / Province : \_\_\_\_\_ Postal Code / Code postal : \_\_\_\_\_

Referred by / Recommandé par : \_\_\_\_\_ RPSC # / # SRPC: \_\_\_\_\_

Return to: RPSC member Services, P.O. Box 929, Stn. Q, Toronto, ON Canada M4T 2P1

Retournez à : SRPC, c. p. 929, succ. Q, Toronto (Ontario) M4T 2P1

## in MEMORIAM NÉCROLOGIE

---

### Henry (Harry) E. Duckworth, BA, BSc, PhD, OC (1915-2008)

---

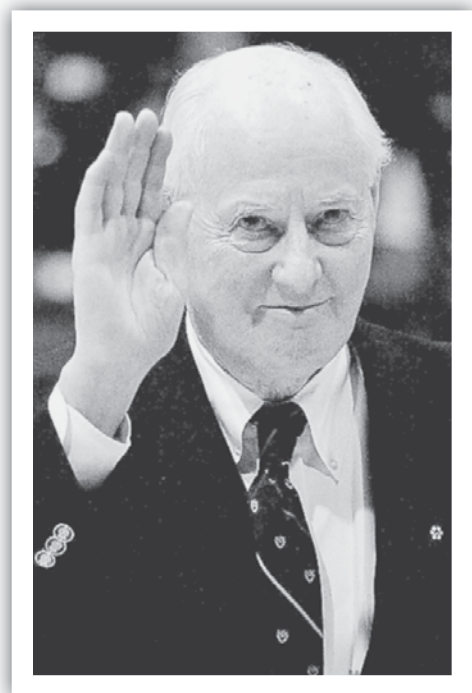
Scientist, professor, academic and university administrator, Dr. Duckworth was well known in the Manitoba and Canadian University community. He was a valued researcher and physician and then Vice-President (1965-1971) and Chancellor of the University of Manitoba (1986-1992) and President of the University of Winnipeg (1971-1981). For his scientific achievements he was elected a member of the Royal Society of Canada in 1954.

He was married twice. His first wife, Katherine Jane McPherson, whom he married in 1942, predeceased him in 1991. In 1995, he married Shirley Craik. By his first wife he had two children, Harry and Jane.

Dr. Duckworth is well known in the philatelic world for his collections

of Large Queen stamps of 1868 and the seminal definitive work on the same stamps that he authored with his son. *The Large Queens of Canada and their Uses, 1868-1872* handbook was published by the Vincent Graves Greene Philatelic Research Foundation in 1986. It is the only one of the Greene Foundation books to have sold out proving the importance of the Duckworths' work. Dr. Duckworth spent the last months of his life updating the handbook, adding new chapters and preparing the handbook for a second edition. It is unfortunate that he will not be able to see the result of his hard work since the book was at the printer when he passed away on December 18, 2008.

The RPSC expresses its condolences to his wife and children.




---

### Fredrick Christopher McGregor, (1922-2008)

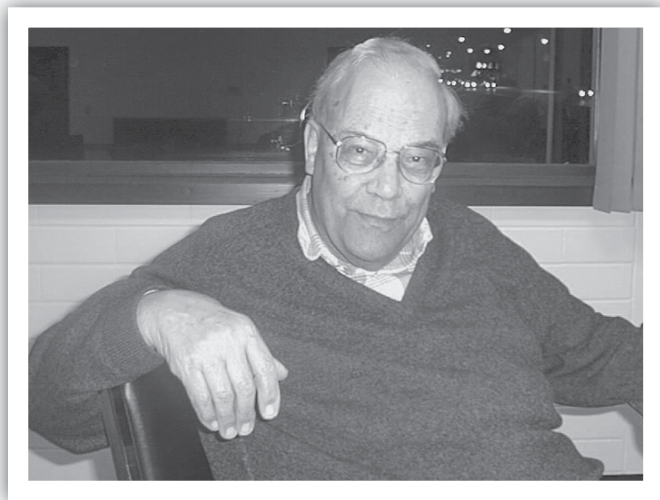
---

After a brief illness, Chris McGregor passed away peacefully on December 29, 2008, on his 86th birthday. He was predeceased by his wife Helen in 1997 and is survived by his son David (and Josée) and his brother Duncan (and Lorna). Chris was born in Vancouver, and grew up and resided in the Kerrisdale district of Vancouver. During World War II, he interrupted his education at the University of British Columbia to serve in the Navy as a wireless operator—first onshore in Britain and then on the convoy-escort corvette *HMCS Orangeville*. After the war, Chris returned to UBC and completed his degree in Electrical Engineering. Chris worked his way

up to be a partner in a Vancouver engineering firm then established his own consulting company. He received many honours for his professional work which included development of codes for management of electricity within hospitals.

Chris had many philatelic collecting interests, including Scandinavia (Greenland, Faeroe Islands, and Sweden), Chile, and St. Vincent. He developed gold medal-winning exhibits of the Faeroe Islands and of "Greenland, Its Post Before 1940." He was an RPSC national-level judge. He collected duplex postmarks of British Columbia and made a major contribution in this area to Bob Lee's duplex catalogue. He was a member of the Postal History Society of Canada from 1980 to 1995. He was Secretary of the British North America Philatelic Society from 1989 to 1992 and he helped organize the 1991 BNAPS convention held in Vancouver in 1991. In 1994, he was named to the BNAPS Hall of Fame. He and Helen were members of the Northwest Regional Group of BNAPS. He was a director-at-large of the Scandinavian Collectors Club from 1991 to 1994 and also served as bylaws committee chairman and associate editor of Greenland for SCC's journal *The Posthorn* in the 1990s, contributing several articles on Greenland. Chris collected Lundy locals and was a member of the Lundy Collectors Club.

About a decade ago, Chris started research into the production of picture postcards. He assembled a definitive collection of cards produced by the French publisher Louis Levy Sons & Co. (LL cards), and he wrote a book on the cards of the photographer J.H.A. Chapman. He collaborated with Ron





Souch in compiling a catalogue of western Canada views of the Valentine Companies. He assisted Lee Dowsley and Roma George with their book on the postcards of Coast Publishing of Vancouver. His real postcard love was for his ever-growing collection of early scenes of Vancouver, so carefully recorded, sorted, studied, and enjoyed. Many of his cards photographed by Philip Timms illustrate the monograph on Timms's cards. In late 2008, he was working with other members of the Vancouver Postcard Club on a book about British Columbia postcard publishers. He served on the Board of the Friends of the Vancouver Archives for many years, and was the longest standing member of Ryerson United Church.

Several times at his memorial service, the comment was made that throughout his life Chris was a problem solver. He brought a systematic approach to his collecting, his research, and his judging. He established guidelines for research projects and was accepting of different approaches to these problems on the odd occasions when he discovered they were superior to his own methods. He has been described as helpful, knowledgeable, generous, and sharing with his knowledge. Chris was one of the finest and wisest people I have known.

*Gray Scrimgeour, with the help of many of Chris's friends.*

## classifieds annonces classées

### AUCTION / ENCHÈRE

**AUCTIONS THAT COVER** the world! Collections, large lots, stamps and postal history always offered. Visit us at [www.johnsheffield.com](http://www.johnsheffield.com) and click "Current Auction." v62n01

### BRITISH COMMONWEALTH / COMMONWEALTH BRITANNIQUE

**BRITISH COMMONWEALTH** from early to modern. Visit us at [www.johnsheffield.com](http://www.johnsheffield.com) and click "Price Lists." A fully searchable data base and your satisfaction guaranteed! v62n01

### CANADA FOR SALE / CANADA À VENDRE

**NEWFOUNDLAND** Specialized Stamp Catalogue 7th edition, 2010; spiral bound; color; 630 pages. Includes Colonies of: NB, PEI, NS, BC; Classic Canada to 1951. Sent as XpressPost in North America C\$ 145; Int'l Airmail to World C\$ 145; [www.nfldstamps.com](http://www.nfldstamps.com), (709-685-0560) 9 Guy Street, St. John's, Newfoundland, CANADA A1B 1P4 v60n06

**CANADA MINT & USED** from earlier issues to recent. Visit [www.stampwants.com/stores/FoothillsTradingCompany](http://www.stampwants.com/stores/FoothillsTradingCompany) for our latest selection. Use code CANPHL10 and receive 10% off of your first order of \$10 or more! v61n01

**CANADA STAMPS** and covers from the first issue to the 1940's. Visit us at [www.johnsheffield.com](http://www.johnsheffield.com) and click "Price Lists." A fully searchable data base and your satisfaction guaranteed! v62n01

**PETER ZARIWNY COLLECTION** of Canada 7 Newfoundland postal stationery being broken up and offered for sale. There is something here for everyone. Mike Sagar 3920 Royalmore Ave., Richmond BC V7C 1P6 Canada or [www.postal-stationery.ca](http://www.postal-stationery.ca) v60n04

### EXCHANGE / DEMANDES D'ÉCHANGE

**TRADING PARTNERS WANTED!** I am a general collector with a large amount of \$1 plus material that I wish to exchange on a Scott basis. Personal interests are worldwide revenues, BR. Colonies, Western Europe. I have the world to trade. Please, e-mail (or mail) your willingness to exchange. I will send first. Bob Adams, 10 Lansdowne Rd. N., Cambridge, On N1S 2S8, [adams@brant.net](mailto:adams@brant.net) v60n03

### FOR SALE / À VENDRE

**ZIMO OFFERS GREENLAND:** Nice lot of VF used Greenland, all different, \$30 Scott 2008 value for only \$9.75. Zimo, Box 578 Bromptonville, Sherbrooke QC, J1C 1A1 v60n02

**ZIMO OFFERS MIXTURES:** Try our Scandinavian Mixture, 500 Grammes: \$85. Including Very Recent. Many reorders on this one! Zimo, Box 578 Bromptonville, Sherbrooke QC, J1C 1A1 v60n02

**ZIMO OFFERS ICELAND:** All different VF used Topical Complete sets, Scott 2008 Value: \$30. Yours for only \$9.75. Zimo, Box 578 Bromptonville, Sherbrooke QC, J1C 1A1 v60n02

**ZIMO OFFERS FAROE:** Colorful lot of all different VF used, Scott 2008 value of \$30 for only \$9.75. Zimo, Box 578 Bromptonville, Sherbrooke QC, J1C 1A1 v60n02

**ZIMO OFFERS SWEDEN:** Lot of all different complete sets, VF used, Scott 2008 value: \$30. Yours for only \$9.75. Zimo, Box 578 Bromptonville, Sherbrooke QC, J1C 1A1 v60n02

**ZIMO OFFERS BONUS:** Buy \$50 from our classifieds and receive \$50 Scott value of all different, cataloguing over \$1 each. New composition. Ask for it! v60n02

**ZIMO OFFERS FINLAND:** Complete sets, very recent all different VF Used, \$30 Scott 2008 value, yours for \$9.75. Zimo, Box 578 Bromptonville, Sherbrooke QC, J1C 1A1 v60n02

**ZIMO OFFERS ALAND:** Seldom seen complete sets all different VF Used, \$25 Scott 2008 value, yours for \$9.75. Zimo, Box 578 Bromptonville, Sherbrooke QC, J1C 1A1 v60n02

**ZIMO OFFERS LIECHTENSTEIN:** Superb & Beautiful stamps, all different VF Used, \$30 Scott 2008 value, yours for \$9.75. Zimo, Box 578 Bromptonville, Sherbrooke QC, J1C 1A1 v60n02

**ZIMO OFFERS DENMARK:** 32 seldom seen semi-postals stamps including complete issues, all different VF Used, yours for \$9.75. Zimo, Box 578 Bromptonville, Sherbrooke QC, J1C 1A1 v60n02

### NEW ZEALAND / LA NOUVELLE ZÉLANDE

**Pure New Zealand** Pure fascination. To find out more about the stamps of this microcosm of the philatelic world contact: Capbell Paterson Ltd, PO Box 5555, Auckland 1141, New Zealand, email: [service@cpnzstamps.co.nz](mailto:service@cpnzstamps.co.nz) v62n01

### PUBLICATIONS / PUBLICATIONS

**"POSTCARD ALBUM"** glossy magazine from Germany in English. Highly informative, well-illustrated, advertising section, etc. Two issues (my choice) only \$18 postage included! D. Mario, Box 342, Saskatoon, SK S7K 3L3. v60n03

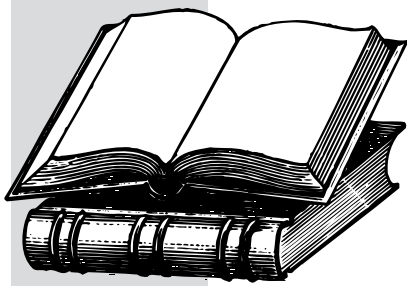
### WANTED / RECHERCHÉ

**ACCUMULATOR** requires inexpensive collection or odds and ends of any country on or off paper. Send description for an offer to: D. Goreski, 749 Tarn Court, Oshawa, ON L1J 6Y8 v60n02

**BUYING ANY COUNTRY,** on paper, paying \$2 per lb., stamps on parcel are returned. Patrick Cangle, 733 Terrill, Apt. 2, Sherbrooke QC J1E 1L8. 819-562-8345, e-mail: [patcan@sympatico.ca](mailto:patcan@sympatico.ca). v60n03

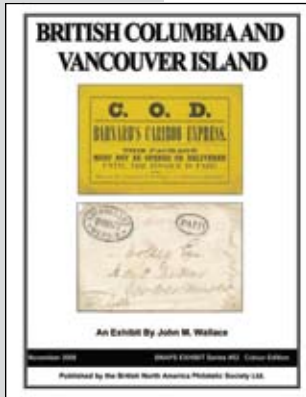
**SANTA LETTERS** or envelopes with H0H 0H0 return address. Any era. Buy or trade. Tony 519-745-2973, e-mail: [tshaman@rogers.com](mailto:tshaman@rogers.com) or Box 43103, Kitchener, ON N2H 6S9. v60n03

**WORLD PRE-1955** stamps, covers, FDC. Highest prices paid: classics VF mint used. Mint: singles, sets imperf, proofs, revenues, Olympics, gymnastics, sports, stationary: letter cards, envelopes labels: printed for postal use, anything expositions: Olympics air-mail marine, cards-postal mint pre-1905. S.C. CP 864 Succ B, Montreal, Que H3B 3K5 v61n05



# BOOK REVIEWS

## OUVRAGES PARUS



### BRITISH COLUMBIA AND VANCOUVER ISLAND

By John M. Wallace. Published by the British North America Philatelic Society, 2008. Spiral bound, 8.5x11 inches, 154 pages ISBN: 978-1-897391-38-9 (colour) \$110.00; 978-1-897391-39-6 (b&w) \$34.95. Credit card orders (Visa, Mastercard) will be billed for exact amount of shipping plus \$2 per order. For payment by cheque or money order, add 10% in Canada, 15% to the US, 20% overseas. GST is payable for Canadian orders. BNAPS members receive a 40% discount. Available from: Ian Kimmerly Stamps, 62 Sparks Street, Ottawa, ON K1P 5A8, Canada. Phone: (613) 235-9119. Internet orders can be placed at [www.iankimmerly.com/books/](http://www.iankimmerly.com/books/)

John M. Wallace's *British Columbia and Vancouver Island* publication is the 52nd in the

British North America Philatelic Society exhibit series. As with other volumes in this series it will prove to be a useful addition to philatelic libraries of individuals intent on improving their chances of earning higher awards at the national and international levels of competition.

Given the relatively small populations of pre-confederation Vancouver Island and British Columbia it is noteworthy that Wallace was able to assemble a quantity of philatelic material, most of which is above the norm in quality. The exhibit has been shown at national level shows in Victoria, Vancouver, Vernon, Calgary, Edmonton, Toronto, Portland, Spokane, San Francisco, St. Louis, Tucson, McAllen, Texas, and Internally in Auckland, NZ, and London, England, earning medals along the way that ranged from Bronze to Gold, including a Grand award.

One of the user-friendly ideas included in the publication is an index of the 144 pages comprising this nine-frame exhibit. A couple of hand-drawn maps provide readers with an overview of the items and how these relate to the geographic area covered by the exhibit. Also illustrated is a Hudson's Bay Company ledger page from the pre-colonial era listing items such as pearl shells, ox hides and whale bones.

Pages four through 16 of the publication consist of pre-stamp-era covers from British Columbia and Vancouver Island and the first three franks in use in Victoria prior to the issue of adhesive postage stamps. Also included in this section are overseas covers addressed to Victoria, covers with custom seals, large oval postmarks, covers carried by Butterfield's Overland Express and similar, scarce items.

Pages 17 to 33 span the fourth and fifth Victoria franks used before and after the issue of adhesive stamps, including the Nanaimo and New Westminster franks, among others. All of the covers in this section are outstanding. Particularly

pleasing to the eye are the red-and-green coloured oval hand-stamps from places such as Victoria and Nanaimo.

Material shown on pages 34 to 63 consists of covers illustrating the 2½d denomination stamp issued for use in both colonies at various times with five different values without surcharges. Also shown are Barnard and Nelson Express labels and covers.

On September 19, 1865 Vancouver Island released two different stamps, the 5-cent rose and the 10-cent blue. Shortly thereafter, on November 1, 1865, British Columbia released its 3d value stamp. A variety of these usages are amply illustrated on a number of covers on pages 64 to 83.

The 3d light blue stamp, valid only on the British Columbia mainland, and 3d dark blue, used for the united colonies, are abundantly illustrated on covers comprising the next 25 exhibit pages. Overprints are amply represented, showing both the 12½ and 14 perforation varieties.

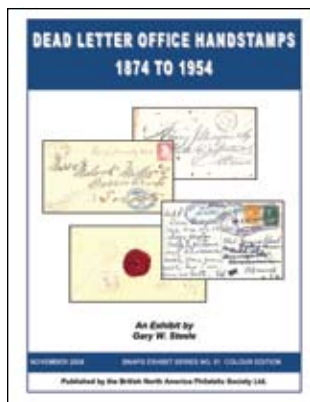
As might be expected for an exhibit of British Columbia material, express covers are not overlooked. Shown are covers carried by Wells Fargo, Bamber & Co's Express, Bamber & Wells Fargo Expresses and the only reported Barnard's Cariboo Express label.

Nor are Canadian stamps with colonial cancellations and covers from the early provincial era overlooked in this award-winning exhibit. No fewer than three pages are devoted to these items.

Head-and-shoulder images of individuals of note whose correspondence forms a part of this exhibit complement the publication.

Available in full colour and in black-and-white at an affordable price, one of these two versions will likely meet the needs of collectors with an interest in the postal history of what became Canada's sixth province.

Tony Shaman



## DEAD LETTER OFFICE HANDSTAMPS 1874 TO 1954

By Gary W. Steele. Published by the British North America Philatelic Society, 2008. Spiral bound, 8.5x11 inches, 170 pages ISBN: 978-1-897391-36-5 (colour) \$115.00; 978-1-897391-37-2 (b&w) \$35.95. Credit card orders (Visa, Mastercard) will be billed for exact amount of shipping plus \$2 per order. For payment by cheque or money order, add 10% in Canada, 15% to the US, 20% overseas. GST is payable for Canadian orders. BNAPS members receive a 40% discount. Available from: Ian Kimmerly Stamps, 62 Sparks Street, Ottawa, ON K1P 5A8, Canada. Phone: (613) 235-9119. Internet orders can be placed at [www.iankimmerly.com/books/](http://www.iankimmerly.com/books/)

Gary W. Steele's exhibit, reproduced in this volume, is a consistent Gold winner and has automatically qualified to be published as part

of the British North America Philatelic Society Exhibits Series when it was selected as the recipient of the Horace Harrison Grand Award at BNAPEX 2008 NOVAPEX in Halifax. Exhibits earning the Reserve Grand and Grand awards at BNAPS-sanctioned shows become automatic candidates for the society's Exhibits Series publications.

At ROYAL\*2008\*ROYALE in Quebec City, the exhibit took a Gold award in the single frame category.

A ten frame exhibit, it is divided into four major areas: 1) Ottawa Dead Letter Office 1874 to 1898; 2) Decentralization July 1, 1898; 3) Special Use Handstamps; and 4) Undeliverable Mail Office. The first three of the foregoing divisions are subdivided into further subsections with each section amply illustrated with scarce and unique covers. The title and exhibit breakdown pages complement the four main sections into which the exhibit has been divided.

The Ottawa DLO section is replete with a variety of handstamps. Shown in the exhibit are examples of split circle and closed circle handstamps, closed circle RECD numbered handstamps, shift markings and Dead Letter Branch Superintendent P.O. Dept. Canada handstamps. A number of these are quite scarce, and for the benefit of judges and the viewing public, exhibited items of special interest are highlighted with a red border. Many red bordered covers are in evidence throughout this section, as they are throughout the remainder of the exhibit.

In the interest of productivity efficiency, the Post Office Department decentralized the DLO on July 1, 1898. It set up a combination of branch and local offices across the country and the author divided the Decentralization section of his exhibit by the cities where these dead letter offices were located. This section of the publication takes up the lion's share of the

exhibit with no fewer than 128 pages or eight frames devoted exclusively to covers handstamped at these locations. Major types, as well as subtypes, of handstamps for each office are in evidence throughout this section.

Special use handstamps, consisting of advice markings and wax seals, take up fifteen pages or nearly an entire 16-page frame: eight pages are devoted to advice markings and seven to wax seals.

Examples of covers with red wax seals with the initials DLO, used mainly for undeliverable registered mail, include the cities of Halifax, Montreal, Ottawa, Winnipeg, Regina, and Vancouver. The wax seal on one of the Ottawa covers in the exhibit bears the earliest reported date of any DLO branch.

Completing the exhibit is a cover dating from the post wax seal era, circa 1946. In place of the wax seal this Canada Post Office cover is handstamped 22-10-1956 with a circular dater at the Ottawa undeliverable mail office along with a rectangular boxed large R (registered) strike. Heading up the page with this cover, the author writes: "The End of an Era." It is an apt description for the final page of what is likely one of the finest Canadian DLO exhibits in existence.

Despite the challenge of assembling dead letter office material due to the scarcity of surviving material, this exhibit boasts numerous difficult-to-find items in spades.

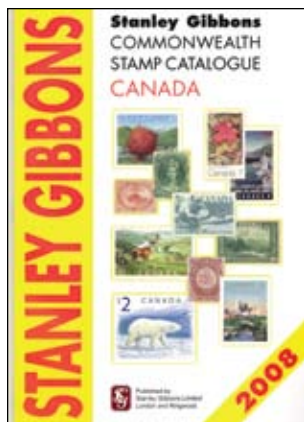
Because of the complexity of the DLO system and a plethora of relevant cancelling devices, it would be difficult to absorb and appreciate the exhibited material in a single brief viewing as is customary at most stamp shows. For that reason alone, collectors with an interest in DLO and undeliverable mail will want to own this publication.

Although not inexpensive at \$115.00 for the colour version, the black-and-white copy selling for a very reasonable \$35.95, less the 40% discount for members of BNAPS, makes it an affordable purchase for most serious collectors.

Tony Shaman

**\$10.00 PER LISTING PER ISSUE!**

**Ask for Details Now Reach new clients effectively,  
efficiently and economically with *The Canadian Philatelist's*  
new page for advertisers. Coming Soon!**



## STANLEY GIBBONS COMMONWEALTH STAMP CATALOGUE CANADA

Published by Stanley Gibbons (5 Parkside, Christchurch Road, Ringwood, Hampshire, Great Britain, BH24 3SH) ISBN 10: 0-85259-684-7 and ISBN 13: 978-0-85259-684-5, Glossy soft cover; 104 pages. 220 X 297mm. Retail price £16.95. Orders can be placed by telephone: +44 (0)1425-472363 or by e-mail: sales@stanleygibbons.co.uk or Internet: www.stanleygibbons.com

The 3rd edition of Stanley Gibbons Canada price list released on October 31, 2008, similar to the firm's other One-Country catalogues, is printed in full colour. In addition to the stamps of the Dominion of Canada beginning with the Large Queen issue of April 1, 1868, this latest catalogue also lists the colonial issues of Canada, British Columbia, Vancouver Island, New Brunswick, Newfoundland, Nova Scotia and Prince Edward Island.

Complementing the 104-page catalogue are Canada's stamp booklets, registration and special delivery stamps, postage dues, officials - both OHMS perforated and overprinted as well as the G overprints. Airmail stamp listings are interspersed with the regular listings.

Stamp listings in the catalogue are at a level that is similar in detail to those contained in the British Commonwealth Part 1 Catalogue. Listings also include shades, plate flaws, major

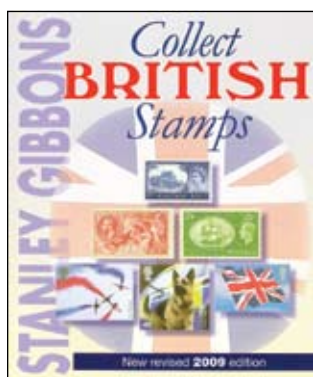
errors, notes on stamp identification and a price guide for stamps on cover to 1945.

Prices are given for mint and used stamps in fine condition. Stamp booklets span the period from 1900 up to and including the Lifeguard booklet released in July 2008. Prices for issues to 1970 are taken from the latest 2009 Commonwealth and Empire Stamp Catalogue; subsequent issues have been specially repriced for this catalogue.

The International Philatelic Glossary consisting of three pages of terms of the hobby's main terms in English, German, Italian, and Spanish gives this publication a worldwide appeal and makes it user-friendly for non-English-speaking collectors.

At £16.95, this fully illustrated and expertly assembled work is reasonably priced and we have no hesitation in recommending it to collectors with an interest in the stamps of Canada and the stamps of the British colonies that became Canadian provinces after Canadian confederation in 1867.

Tony Shaman



## COLLECT BRITISH STAMPS

Published by Stanley Gibbons (5 Parkside, Christchurch Road, Ringwood, Hampshire, Great Britain, BH24 3SH). ISBN 10:0-85259-692-8 and ISBN 13:978-85259-692-0. Glossy soft cover, 356 pages; 164X194mm. Retail price £9.95. Orders can be placed by telephone: +44(0)1425-472363 or by e-mail:sales@stanleygibbons.co.uk or Internet: www.stanleygibbons.com

The 2009 Stanley Gibbons *Collect British Stamps* is the publisher's 60th edition. Issued in full colour throughout, sales of this popular

checklist have exceeded 3.9 million copies worldwide since its introduction in 1967. And for good reason: it is well laid out, visually pleasing, and comprehensive. The Commemorative Design Index, introduced in the 2007 edition, has been updated from last year's edition to allow collectors to look up any issue quickly and easily

Although this work, published in late fall 2008, is an extensive checklist, it is, understandably, not as comprehensive as its more detailed sister publication, The Great Britain Concise catalogue released each spring. Nevertheless, it comes complete with a listing of every British stamp issued from the Penny Black to the catalogue's publication date in 2008. All commemorative issues are fully illustrated. Also included in this edition are first day covers, Philatelic Numismatic and Philatelic Medallion covers produced in association with the Royal Mint.

For the watermarks specialists and perforation enthusiasts, the catalogue lists all stamps with different watermarks and perforations. Nor are details overlooked such as the visible plate numbers on the Victorian issues, graphite-lined and phosphor issues, including phosphor omitted errors, missing colour errors and stamp booklets.

Listed stamp prices reflect today's market for British issues. A number of significant increases across many issues reflect the current popularity of the stamps of Great Britain.

Also listed in this latest price list are the Presentation, Gift and Souvenir Packs, Post Office Yearbooks, Postage Due and Official Stamps, Commemorative gutter pairs and 'Traffic Light' gutter pairs listed as mint sets, and the Regional issues and War Occupation issues of Guernsey and Jersey.

For collectors of the stamps of Great Britain, this recently updated catalogue is one that they will not want to be without. Sales price for this latest edition has been maintained at a very competitive 9.95 pounds to make it affordable for most collectors of the stamps of Great Britain.

Tony Shaman



## GREAT BRITAIN VOLUME 1 QUEEN VICTORIA SPECIALIZED STAMP CATALOGUE

Published by Stanley Gibbons (5 Parkside, Christchurch Road, Ringwood, Hampshire, Great Britain, BH24 3SH). ISBN 10:0-85259-681-2 and ISBN 13:978-85259-681-4. Glossy soft cover, 528 pages; 5½ X 8½ inches. Retail price £39.95. Orders can be placed by telephone: +44(0)1425-472363 or by e-mail: sales@stanleygibbons.co.uk or Internet: www.stanleygibbons.com

Printed on high-gloss paper, the 15th edition of this popular catalogue includes just about everything that specialists of Great Britain's Queen Victoria stamps could want. The print is easy to

read; the black-and-white illustrations are crisply clear.

Beginning with essays, the 528-page catalogue takes the student through the stamp manufacturing process to the die and plate proofs, colour trials and on to the stamps as finally printed. Price increases from the previous catalogue should be noted for high-demand items, notable for essays, proofs, trials, imprimaturs and early usages.

Expanded listings in this latest work include Mulready proofs, Rainbow trials, Prince Consort Essays and the Archer perforations. New listings, notably the recently discovered 4d. Houses of Parliament envelope and the plate flaws on the 5 pound orange, will be of particular interest to collectors.

A 12-page introduction touches on the historical highlight of Great Britain's mail. Although much of this information will be familiar to long-time philatelists, it serves as an excellent primer for new collectors and others not familiar with this particular facet of postal history. The overview touches on topics such as the long struggle for postal reform in Britain, the introduction of Uniform Penny Postage, Prepaid

Private Letter Sheets, Parliamentary Envelopes, the origin of the adhesive postage stamp, Mulready Stationery and similar items.

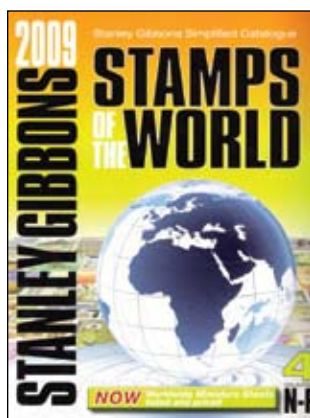
The bulk of the information included in the catalogue, quite appropriately, deals with the Victorian issues in all their minutiae. Introductory notes, including a list of symbols and abbreviations used throughout the text, six fully illustrated appendices and a comprehensive reading list complement a thorough work that delivers more than its title suggests.

The Maltese Cross cancels have been reviewed and updated with new "specials" added or replaced where appropriate. New notes dealing with the surface-printed "abnormals" have been added. Also expanded from the 14th edition is the list of Mulready advertisements and the Telegraphs, Underprints, and Circular Delivery Company stamps.

Priced at 39.95 British Pounds, its price has not increased from the previous edition. Although its price is in the medium to high-end price range of philatelic publications, its comprehensive information is difficult to find in any other single volume at any price.

This catalogue is a quality product that collectors of Great Britain's Victorian issues will want to have on their philatelic bookshelves. It is a work that we have no hesitation in recommending.

Tony Shaman



## STANLEY GIBBONS SIMPLIFIED CATALOGUE - STAMPS OF THE WORLD, 2009 EDITION, VOLUMES 1-5.

ISBN 085259-686-3; 085259-687-1; 085259-688-X; 085259-689-8; 085259-691-X. (7 Parkside, Christchurch Road, Ringwood, Hampshire, Great Britain, BH24 3SH). Laminated soft cover; 230X295 mm. Retail price £44.95 each or 224.75 for the set. Orders can be placed by telephone: +44(0)1425-472363 or by e-mail: sales@stanleygibbons.co.uk or Internet: www.stanleygibbons.com

The 2009 Stanley Gibbons Simplified Catalogues - Stamps of the World, like their predecessors, have incorporated a number of

new features. For example, the publishers in this set of five, worldwide catalogues have listed all miniature sheets and in excess of 11,000 new stamp listings. To be precise, more than 11,660 stamps and miniature sheets and 3,465 illustrations have been added.

Literally, thousands of price changes have been made. Many of them, as might be expected, trend upwards, including the stamps of British Commonwealth countries, Germany and German States and colonies, Japan, North and South Korea and post independence Africa. An all-new cover design is another feature of this year's editions. This set of catalogues has become the accepted reference work for topical, thematic and general collectors since the introduction of the first edition in 1934.

As a basic catalogue these volumes are undoubtedly targeted at thematic collectors as well as general country collec-

tors and as such would have benefited from a subject index. The efficacy of such an index notwithstanding, each individually listed illustration includes a description of historical, geographical, political, and similar information.

The five individual catalogues are divided in alphabetical order by countries with beginning letters as follows: Volume #1, A-C (1106 pages of illustrations); #2, D-H (871 pages); #3, I-M (1059 pages); #4, N-R (706 pages); and #5, S-Z (1043 pages).

Each of the five volumes contains an index of listed countries in alphabetical order as well as cross references to countries listed in each of the four companion volumes.

Five pages of "Information for users" is a thoughtful touch aimed at making users feel comfortable with these catalogues. And, for the most part, the publishers have succeeded. An outline of the catalogue's scope, for example, tells users what philatelic items they can expect to find listed. Equally important, it includes a list of items that are omitted such as, for example, fiscal, revenue, local, private, telegraph, phantom, railway, and perforated initial stamps.

Because the publisher is also a stamp retailer, the listed prices are indicative of what a purchaser can expect to pay

for a stamp in fine condition. Unfortunately, these catalogues do not illustrate or define the term "fine" as, for example, the publisher does in its series of individual countries catalogues. A clear understanding of what is meant by fine, very fine, and so on, would facilitate a better understanding between buyer and seller.

Although these Simplified Stamps of the World Catalogues are not as comprehensive as are the publisher's individual country catalogues, they are completely adequate for collectors for whom they were designed: general, thematic, and collectors of stamps of the world.

Bound in linen-look laminated covers, these catalogues appear durable and will undoubtedly protect their contents for their practical lifetime and beyond.

These now nearly all-colour catalogues, professionally designed and printed, are a quality product that we have no hesitation in recommending for use by thematic or topical collectors as well as general collectors with an interest in the stamps of the world, in the stamps of only a single country or set of countries, or in a specific era or eras.

Tony Shaman

## SAVE OVER

# 50%\* OFF

## ...the Cover Price

## SUBSCRIBE TODAY

<input type="checkbox"/>	<b>3 YRS (78 ISSUES)</b>
	My Cost*.....\$104.95
	Cover Price.....\$253.50
	<b>SAVINGS.....\$148.55</b>
<input type="checkbox"/>	<b>2 YRS (52 ISSUES)</b>
	My Cost*.....\$73.45
	Cover Price.....\$169.00
	<b>SAVINGS.....\$95.55</b>
<input type="checkbox"/>	<b>1 YR (26 ISSUES)</b>
	My Cost*.....\$41.95
	Cover Price.....\$84.50
	<b>SAVINGS.....\$42.55</b>

Name: \_\_\_\_\_

E-mail: \_\_\_\_\_

Address: \_\_\_\_\_

City: \_\_\_\_\_ Prov.: \_\_\_\_\_

Postal Code: \_\_\_\_\_

Phone: \_\_\_\_\_

PAYMENT ENCLOSED     VISA OR MASTERCARD

Card#: \_\_\_\_\_

Exp. Date: \_\_\_\_\_ Signature: \_\_\_\_\_

# ATTENTION

## PHONE ORDERS CALL

### 1-800-408-0352

OR

## SUBSCRIBE ONLINE!

[www.canadianstampnews.ca](http://www.canadianstampnews.ca)

**Send Payment to:**  
 Canadian Stamp News, PO Box 28103,  
 Lakeport PO, 600 Ontario St.,  
 St. Catharines, ON, L2N 7P8

Rates for U.S. are the same as Cdn prices  
**International rate for 1 year only is \$159.00**  
 \*GST prices are included

NB, NS, NL - HST PRICES ARE AS FOLLOWS; 3YRS - \$107.57 • 2YRS - \$75.28 • 1YR - \$42.99

PLEASE ALLOW UP TO 4 WEEKS FOR DELIVERY OF YOUR FIRST ISSUE

126 • the CP / le PC • MA09

# British North America Specialists

Always looking for the unusual...



1857 Three pence green Heraldic on thick porous wove paper with mesh, an outstanding mint block of eight. Certainly among the greatest and most important multiple of the Newfoundland Pence Era.  
THE LARGEST EXISTING MULTIPLE OF THE 1857 THREE PENCE ISSUE; the second largest being only a block of four!  
(Scott 3) 2008 Greene Foundation certificate.  
Recently purchased for our retail stock.

**Esoteric...**

**Errors / Varieties...**

**Unlisted...**

**Please do not hesitate to contact us.**

*Gary J. Lyon (Philatelist) Ltd.*

P.O. Box 450 - Bathurst - New Brunswick - E2A 3Z4 - Canada

Tel (800) 667-8267 - Fax (888) 867-8267 - Email [glstamps@nbnet.nb.ca](mailto:glstamps@nbnet.nb.ca)



**FOR POSITION ONLY  
ACTUAL FILM ON FILE  
AT WEBCO**

Canada's Premier Auction house we always have something new and interesting

When selling your collection our auctions will maximize your results

Please call or write us for a complimentary catalogue

**r. maresch & son**

DEALERS IN FINE STAMPS SINCE 1924

5TH FLOOR, 6075 YONGE ST., TORONTO, ON M2M 3W2 CANADA  
☎ (416) 363-7777 [www.maresch.com](http://www.maresch.com) FAX (416) 363-6511