

The Canadian **Philatelist**
Le **Philatéliste** canadien



JANUARY/FEBRUARY 2005 JANVIER/FÉVRIER - VOL. 56 • NO.1

Journal of The ROYAL PHILATELIC SOCIETY OF CANADA
Revue de La SOCIÉTÉ ROYALE DE PHILATÉLIE DU CANADA

Our roosters are flying off the shelves!

It's the Year of the Rooster
and time to celebrate with
these fine-feathered stamps
and collectibles from
Canada Post.

Nos coqs s'envolent des tablettes!

En cette année du Coq, voici le
temps de louer ces magnifiques
timbres et articles de collection
de Postes Canada.



Lunar Pack

Available January 31, 2005
Features international Year of the Rooster stamps from
Canada, Hong Kong and the People's Republic of China.

341685 **\$12.95**

Pochette-souvenir

En vente à compter du 31 janvier 2005
Cette pochette internationale renferme des timbres émis
par le Canada, Hong Kong et la Chine.

341685 **12,95 \$**

Prepaid Postcards

Single Stamp Image postcard - 262126
Souvenir Stamp Sheet Image postcard - 262127

\$1.49

Cartes postales prépayées

Carte présentant le motif du timbre seul - 262126
Carte présentant le motif du bloc-feuillet - 262127

1,49 \$



Lunar New Year - Stamps

Full pane of 25 stamps 403600107 **\$12.50**

Souvenir sheet of 1 403600145 **\$1.45**

Souvenir sheet of 1 overprint 403600146 **\$1.45**

OFDC 403600121 **\$2.95**

Nouvelle Année lunaire - timbres

Feuille complète de 25 timbres 403600107 **12,50 \$**

Bloc-feuillet de 1 timbre 403600145 **1,45 \$**

Bloc-feuillet de 1 timbre avec surcharge 403600146 **1,45 \$**

PPJO 403600121 **2,95 \$**



Stamp and Precious Coin Set

243616 **\$105.88**

Ensemble-souvenir timbre et pièce en métaux précieux

243616 **105,88 \$**



Playing Cards

341682 **\$4.50**

Cartes à jouer

341682 **4,50 \$**



Uncut Press Sheet

403600149 **\$26.95**

Planche non coupée

403600149 **26,95 \$**

Visit your local Canada Post outlet or call **1-800-565-4362** to order.

Visitez le comptoir de Postes Canada le plus près de chez vous ou commandez
par téléphone au **1 800 565-4362**.



From anywhere... De partout...
to anyone jusqu'à vous



EASTERN AUCTIONS LTD.

Canada's Most Trusted Auction House



For over 25 years we have been offering philatelic buyers the opportunity to acquire some of the best B.N.A. material on the market, as well as top quality Commonwealth, United States and Worldwide.



You've spent years building your collection. When the time comes to sell, you need an Auction house that will spend the time and has the resources to give your collection the attention it deserves. Let us achieve maximum results for you.



For a complimentary catalogue or to inquire on how to consign to our Public Auctions, please call or fax Toll Free in North America.
Tel: 1 (800) 667-8267 Fax: 1 (888) 867-8267



Eastern Auctions Ltd.

P.O. Box 250, Bathurst, NB, E2A 3Z2, Canada

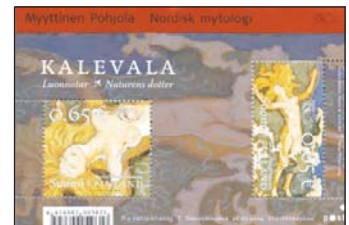
Web Site: www.easternstamps.com

Tel: 1 (506) 548-8986 • Fax: 1 (506) 546-6627



FEATURE ARTICLES / ARTICLES DE FOND

Thematic Philately	
By Frank Alusio, FRPSC	6
Top Of The World	
By Joseph Monteiro	9
The Urban Transit System	
By Dale Speirs.....	14
The One & Only	
By Ken Lewis	16
Philatelic Treasures - Part V: Gold Coast Universal Unified Keyplates	
By Peter Newroth	18
Decimal Covers To Australia And New Zealand In the 1860s	
By George B. Arfken	22
Voyage d'un collectionneur dans l'univers de la bureaucratie pendant la Seconde guerre mondiale	
par Herbert G. Teal	25
Philately In Nova Scotia In The 1980s	
By Michael Peach	38
Varieties	
By "Napoleon"	41
Transcribing Sounds	
By Michael Madesker, RDP, FRPSC	42
To The "Beaver" Stamp	
By Chas. E. Jenney	45



Top Of The World – Page 9



Philatelic Treasures – Page 18



*Voyage d'un collectionneur...
– Page 25*



Beaver Poem – Page 45

DEPARTMENTS / SERVICES

Book Review / Ouvrages parus	24, 36, 44, 50
ROYAL *2005* ROYALE Prospectus / Formulaire	28
Palmares	37
News, Views, & Happenings / Nouvelles, opinions et événements.....	46
Notice To Members / Avis aux membres	51
President's Page / La page du président	52
Membership Reports / Rapports des membres.....	53
In Memoriam	54, 55
Exchanges / Demandes d'échange	54
Coming Events / Calendrier.....	57
Chapter Meetings / Réunions des clubs membres.....	58
One Last Word / Un dernier mot	60
Classifieds / Annonces classées.....	62
Departments and Committees / Services et comités	63
Alphabetical List of Advertisers / Liste des annonceurs.....	63

THE COVER / PAGE COUVERTURE:

Old postcards, windows to our past, are collected by a wide cross-section of the population. The speed and convenience of modern communications technology have long ago toppled New Year's greeting cards from their pinnacle as the preferred means of sending best wishes to friends and neighbours.

It remains to be seen if today's electronic greeting "cards" will enjoy the same acceptance by collectors 100 years from now that paper cards enjoy today.

Bon nombre de gens s'intéressent à la collection de cartes postales anciennes, une fenêtre ouverte sur le passé. La rapidité et l'aspect pratique des technologies modernes de communication ont depuis longtemps détrôné les cartes de souhaits du Nouvel An comme moyen privilégié de transmettre ses vœux à ses parents et amis.

Reste à voir si dans cent ans ces « cartes » virtuelles jouiront de la même popularité auprès des collectionneurs que leurs ancêtres en papier.

We acknowledge the financial support of the Government of Canada through the Publication Assistance Program (PAP) toward our mailing costs.

Nous remercions le gouvernement du Canada pour son appui financier pour nos frais de poste par l'entremise du Programme d'assistance aux publications (PAP).

The Canadian Philatelist (ISSN 00-45-5253) published bimonthly by Philaprint Inc. 10 Summerhill Avenue, Toronto, Ont., M4T 1A8. Printed and produced in Canada by Trajan Publishing Corporation. ©Philaprint Inc. 2005. Opinions expressed herein are those of individual authors only and neither the Publisher nor The Royal Philatelic Society of Canada accepts responsibility for them. Manuscripts should be type-written or submitted on computer disk. Only original articles will be considered. Books and Literature for review should be submitted to the editor. None of the editor, the Society, the publisher nor any officer or director either incurs any liability for any article or manuscript or any item accompanying such article for photography, all of which are at the sole risk of the person submitting same. Indexed in the Canadian Magazine Index and available on-line in the Canadian Business and Current Affairs Database. The Publisher reserves the right to decline any advertising and acceptance does not imply endorsement of the product or service.

Subscription price for members of The Royal Philatelic Society of Canada \$25.00 per year. This amount is included in membership fees and the members automatically receive the journal. Non-members \$30.00 per year. Changes of address, undeliverable copies and orders for subscriptions should be sent to PO Box 929, Station Q, Toronto, Ont., M4T 2P1. Return postage guaranteed. Publications Mail Registration No. 09828.

Le philatéliste canadien (ISSN 00-45-5253), bimensuel publié par Philaprint Inc., 10 Summerhill Avenue, Toronto, Ont., M4T 1A8. Fait et imprimé au Canada par Trajan Publishing Corporation. ©Philaprint Inc. 2005. Les opinions émises sont celles des auteurs seulement et ni l'éditeur, ni La Société royale de philatélie du Canada n'accepte leur responsabilité. Les manuscrits doivent être écrits à la machine ou soumis sur disquette d'ordinateur. Seuls les articles originaux seront pris en considération. Les livres et articles à examiner doivent être soumis au rédacteur en chef. Aucune responsabilité n'est acceptée par le rédacteur, la Société, l'éditeur ou tout membre du bureau ou du comité directeur, pour tout article, manuscrit ou tout autre document, comme des photographies, accompagnant ledit article ou manuscrit. La personne soumettant l'article sera seule responsable. Figure à l'Index des magazines canadiens et est disponible sur Internet sous les bases de données de la Canadian Business and Current Affairs. L'éditeur se réserve le droit de refuser toute publicité; l'acceptation n'implique en rien une recommandation du produit ou du service.

Le prix de l'abonnement est de 25 \$ par an pour les membres de La Société royale de philatélie du Canada. Ce montant est inclus dans la cotisation et les membres reçoivent automatiquement le magazine. L'abonnement pour les non-membres est de 30 \$ par an. Les changements d'adresse, les exemplaires non-livrés et les demandes d'abonnement doivent être envoyés à : C.P. 929, Succursale Q, Toronto, Ont., M4T 2P1. Le port de retour est garanti. Le numéro d'enregistrement des éditions est : 09828.

THE ROYAL PHILATELIC SOCIETY OF CANADA LA SOCIÉTÉ ROYALE DE PHILATÉLIE DU CANADA

Patron Her Excellency The Right Honourable Adrienne Clarkson
C.C., C.M.M., C.D., Governor General of Canada
Présidente d'honneur Son Excellence la très honorable Adrienne Clarkson,
C.C., C.M.M., C.D., Gouverneure générale du Canada

2004-2005 BOARD OF DIRECTORS – CONSEIL D'ADMINISTRATION EXECUTIVE - L'EXÉCUTIF

President – Président:

Charles J. G. Verge, FRPSC
Box 2788, Station D, Ottawa, ON K1P 5W8
president@rpsc.org

1st Vice President – 1er Vice-Président:

J. Edward "Ted" Nixon, FRPSC
255 Cortleigh Blvd Toronto, ON M5N 1P8
ted.nixon@mercer.com

2nd Vice President – 2ième Vice-Président:

Rick Penko
Box 1425, Winnipeg, MB R3C 2Z1
rpenko@shaw.ca

Treasurer – Trésorier:

John Keenlyside, FRPSC
622 - 470 Granville St, Vancouver, BC V6C 1V5

Secretary – Secrétaire

Harry Sutherland, RDP, FRPSC
10 Summerhill Ave, Toronto, ON M4T 1A8
vggfoundation@on.aibn.com

Past President – Président Sortant:

Keith Spencer, FRPSC
5005 Whitemud Rd, Edmonton, AB T6H 5L2
krs2@ualberta.ca

Directors – Les Directeurs

Frank Alusio, FRPSC, Etobicoke, ON
Peter Butler, pbutler@ilap.com
François Brisse, Beaconsfield, QC fsbrisse@sympatico.ca
Raymond Ireson, Roxboro, QC
Kenneth Magee, Clinton, ON kmagee@tcc.on.ca
J. Graham McCleave, FRPSC, Fredericton, NB
mccleave@nbnet.nb.ca
R. F Narbonne, Carleton Place, ON
George Pepall, Kitchener, ON pepall@rogers.com
John M. Powell, FRPSC, Edmonton, AB
johnpowell@shaw.ca

William G. Robinson, FRPSC, Vancouver, BC
Elizabeth Sodero, FRPSC, Halifax, NS
sodero@ns.sympatico.ca

Ann Triggler, Clarence, NY (USA) atriggler@buffalo.edu

Editor – Éditeur

Tony Shaman, FRPSC
P.O. Box 43103, Eastwood Square, Kitchener, ON N2H 6S9
shaman@smokesignal.net

Associate Editor – Éditeur Associé

Grégoire Teyssier, Trois Rivières Ouest, QC,
gteyssier@hotmail.com

National Office – Bureau National

Andrew D. Parr, Executive Director / Directeur exécutif
P.O. Box / C.P. 929, Station, Succ Q, Toronto, ON M4T 2P1
Tel/Tél: (416) 979-8874
Toll Free / Sans frais: 1-888-285-4143
Fax/Télécrp: (416) 979-1144
info@rpsc.org www.rpsc.org

Giancarlo Morolli and his contribution to *Thematic Philately*

By Frank Alusio, FRPSC



Giancarlo Morolli (standing) Says Farewell

On September 2, 2004 at the 68th FIP Congress in Singapore, Giancarlo Morolli, President of FIP Thematic Commission and a true leader in world thematic philately, passed on the baton to his successor. After his 7th term as president, Morolli stepped down. Very few thematic collectors are aware of the remarkable contributions this man has made to thematic and general collecting alike.

HOW HE STARTED

He began his association with FIP (Fédération Internationale de Philatélie) back in 1968 as the Italian delegate to the Commission. Thematic philately at that time was in its infancy. The president at the time was Abbot Franz de Troyer of Belgium.

During THEMABELGA in 1975, the first international exhibition of thematic philately that was held under the auspices of FIP, Morolli was elected vice-president of the Commission. For the next two years he cooperated closely with the Belgian abbot who was active on three main projects:

- Consolidating the Commission structure;
- Broadening the consensus of definitions in parallel with the growth of FIP; and
- Supporting the exhibitors.

However, due to serious illness the abbot asked Morolli to take over the Commission. In May 1977, at the Congress in Amsterdam, he was elected president of the Commission.

His contribution to thematic philately has been enormous. He is leaving an unrivalled legacy to international philately, particularly in pioneering the open dialogue between juror and exhibitor.

ACHIEVEMENTS

In the 1980s FIP decided to create uniform regulations for all philatelic classes. Thematic philately already had theirs in place. In other classes, only national regulations were available. These frequently differed from country to country. The thematic model was taken as a prototype and Morolli was asked to contribute to the project along with a small working group composed of then FIP President Ladislav Dvoracek, FIP Secretary Paolo Vollmeier, and Raife Wellstead, President of the Postal History Commission. The outcome (GREV and SREV) was approved at the FIP Congress in Rome 1985.

In 1981, recognizing that North American collectors would benefit from additional advice on the preparation of thematic exhibits, Morolli was in-

vited to present the Commission's point of view on exhibiting and judging at TOPEX 81 in Chicago. At international exhibitions one of his trade marks was the walk-through for exhibitors, discussing with them the assessment of the relevant exhibits. *Linn's Stamp News* (August 1, 1988) reported: "Giancarlo Morolli spent hours with exhibitors at their displays. Everyone learned from the experience."

He pioneered the model of seminars used for training FIP jurors. He often arranged feedback seminars for exhibitors. These were followed by individual talks with each exhibitor in front of their exhibits. These seminar presentations were made available to participants as well as to the Commission delegates.

LITERATURE

Morolli has written mounds of useful information on thematic philately including articles, regular columns in magazine, essays, guidelines, regulations and books. Each has contributed to the success that thematic collecting and exhibiting enjoys today. His 107-page treatise *Considerations on Thematic Philately* in the form of a display, prepared after an invitation from the Royal Philatelic Society of London, is one of his greatest works.

THE BALANCE

In his assessment of this long period Morolli has mixed feelings. Referring to the definition of the FIP Statute that present Philatelic Commissions as "technical committees of FIP," he feels pretty happy with what was achieved. He believes that two main activities have been carried out correctly and effectively:

1. Support of the FIP as the "brain trust" for thematic philately
2. Providing guidance to FIP members for the development of thematic philately.

However, in the thematic class there has always been a side requirement to act more as an organization than as a committee in order to:

- Be the international reference of thematic philately in the world
- Ensure some coordination and support among thematic entities throughout the world.

RECOGNITION

I have personally been following international philately for more than 40 years. Being part of it for 25 years (exhibitor, juror, FIP delegate) I know pretty well who was who and who did what. I have been in touch with well-known philatelists in Italy, France, Germany, Spain, England, Argentina, USA, and Japan, and everyone recognizes Morolli for his contribution, dedication, determination and passion to succeed. His contributions are unequalled in philately. Yet, it is with sadness that I must report that he has not received the recognition he is due as a distinguished philatelist. Could someone explain why?

CONCLUSION

Morolli is leaving the Commission in the good hands of Damian Läge, the German delegate who has served as vice-president for the past four years. I know Damian personally. In fact, we both apprenticed for our FIP accreditation in San Francisco, CA, in 1997. Though the "master" will deeply be missed, I am certain that Damian has acquired the know-how to succeed during his four-year tenure as vice-president. We as delegates will give him all the support we can.

Ciao, Giancarlo! Arrivederci, amico mio! You have been a solid pillar and certainly left an unforgettable mark in philately. Without your distinct imprint, thematic philately would not be as popular as it is today. On behalf of the thematic community in Canada, I would like to extend to you and your family good health, best wishes, and many thanks for your support and friendship. 🍁

AVAILABLE OCTOBER 2004

THE UNITRADE SPECIALIZED CATALOGUE OF CANADIAN STAMPS 2005

Featuring the established Scott Numbering System used throughout North America



INCLUDES:

- Complete Canada and BNA listing
- Current market prices, by grade, in Canadian funds
- Scott Catalogue Numbers
- Complete Booklets
- First Day Covers
- Plate and Inscription Blocks
- Precancelled issues
- Issue dates
- Prisoner of War Free Franks
- Postal Stationery

Available in English.
French supplement also available

2005 EDITION AVAILABLE FALL 2004

Available at your dealer, stationery or bookstore, or contact:

UNITRADE ASSOCIATES
99 Floral Parkway, Toronto, Ont. M6L 2C4
Email: unitrade@unitradeassoc.com • Website: unitradeassoc.com
Postage and applicable sales taxes are extra.

UNI-SAFE

Plasticcoil Bound only. IN FULL COLOUR



CANADA • BNA

From Choice Classics to Modern Errors & Varieties



FREE ON REQUEST:

Our current private treaty catalogue of Canadian and BNA stamps. Call, Fax, E-mail or Write



*Our
Specialty...*



*...The
Unusual*

View and shop our on-line database of Canadian and BNA stamps at:

www.saskatoonstamp.com

Our web site offers an **on-line shopping cart** where you can look through and order from our large stock of **Canadian and BNA stamps**. You can also start a **want list**, see which **upcoming shows** we will be attending, find out what kind of material **we are looking for**, and much more. With secure on-line shopping, you can build your collection any time.



WANTED: CANADIAN ERRORS



We are always on the lookout for new and better errors and varieties.
Let us know what you have for sale.



IMPERFS - MISSING COLOURS - INVERTS - MISPERFS - COLOUR SHIFTS - PRINTED ON GUM - BETTER VARIETIES

Internationally Recognized as a Leading Dealer in Canadian Errors and Varieties

SASKATOON STAMP CENTRE

P.O. Box 1870, Saskatoon, SK, S7K 3S2 Canada

Call TOLL FREE 1-800-205-8814 in North America

Phone: (306) 931-6633

Fax: (306) 975-3728

Web site: www.saskatoonstamp.com

E-mail: ssc@saskatoonstamp.com



Stamps from the

Top of the World

By Joseph Monteiro

I. INTRODUCTION

Mythology and folklore have existed as part of our history and culture from ancient times. They tend to unite the people of a nation in some mystical manner. Based on a sense of cohesion, or the union it brings, the Nordic countries have decided to use it as a theme for the first series of stamps it has issued for the newly formed Nordic postage stamp alliance. This new Nordic alliance, formed from a union of Sweden, Denmark, Norway, Finland, Åland, Greenland, Iceland and the Faroe Islands, has released a series of stamps on Nordic mythology with its theme as the World of the Gods.

The first issue consists of eight souvenir sheets issued on March 26, 2004. These stamps and souvenir sheet designs depict the talents of artists from the above-mentioned countries. They should delight stamp collectors seeking unique designs. The souvenir sheets are illustrated on the right. The myths are retold in a companion text sold in a souvenir folder and partly on the stamps. Accompanying the souvenir sheet in the folder is a series of texts in the language of their respective countries, and also in English and German.

II. WORLD OF THE GODS

Nordic mythology tells the tale of the creation and the end of the world, of gods, goddesses, divine beings, their lives and deeds. The myths are rooted in a distant past and were of vital importance to the lives of the Nordic people before the advent of Christianity. Originally, the myths were passed down verbally. It was not until the 13th century that myths in written forms such as those by Eddic and Skaldic became available.



Denmark:

Heimdal and Gefion are depicted on the souvenir sheet issued by Denmark. Heimdal, the old Norse god, is the guardian of the gods. He dwells in the heavens, guarding Bifrost, the bridge between Asgård and Midgård. Gefion is the goddess of fertility. She bore four sons to a giant and transformed them into oxen. The oxen were used to plough Sealand out of Sweden where the hole became Lake Vänern. The artist of this souvenir sheet was Kim Bjornholt. It was printed by the steel engraving method by Post Danmark, Stamps.



Sweden:

A warrior riding into Valhalla is depicted on the souvenir sheet issued by Sweden. He will likely meet Valkyrie in Odin's Hall in Valhalla. Valkyrie carries a drinking horn and welcomes the warrior. The design of the stamps was inspired by rune stones found on the Swedish island of Gotland. This souvenir sheet was designed by Kristina Anshelm with typography by Gustav Malmfors and engraving by Lars Sjoblom. It was printed by the offset method by Swedish Post Stamps.

Norway:

Njord, the principal pantheon of gods in Norse mythology, is depicted on the souvenir sheet issued by Norway. He is the god of seamanship and sailing. He marshals favourable weather and auspicious winds to assist fishermen and seafarers. Odin and Frigg had two sons, Baldur and Hod. Baldur is the god of innocence, beauty, joy, purity and peace. Hod is also a god but is blind. As the myth goes, Loki, the god of mischief, discovers that mistletoe can harm Baldur. So he makes a dart with it and gives it to Hod who inadvertently kills Baldur with it. This souvenir sheet was designed by Arild Yttri and printed by the offset method by Joh. Enschedé, Netherland.



Finland:

Luonnotar, Mother of the Waters, is depicted on the souvenir sheet issued by Finland. The stamps of this miniature sheet depict the painting by Gallen-Kallela, Finland's national artist and one of the foremost painters of the golden age of Finnish art. Luonnotar, aerial maid, comes from the air into the water and becomes pregnant from the wind. She gives birth to the aged Väinämöinen who drifts on the sea until he reaches land to complete the work of creation. According to the myth Luonnotar, while adrift in the sea, sees a teal looking for nesting place and offers the bird her knee,

where she lays six golden eggs and a seventh of iron. "The eggs roll out of the nest and break into pieces forming the land, sky, sun, moon, clouds, and stars. Luonnotar, the Water Mother, creates headlands, bays, and dry lands as well as shallows and deep waters in the seas." This souvenir sheet was designed by Askeli Gallen-Kellela and printed by the offset method by Walsall Security Printers.



Åland:

Fenja and Menja, the two large women slaves of King Frode, are depicted on the souvenir sheet issued by Åland. The maid servants ground gold for King Frode. One night the sea-king Musing slew Frode. He took the maids with him aboard his ship and instructed them to grind salt. The ship sank and, as the myth goes, Fenja and Menja, continued to grind salt at the bottom of the sea, which explains the salinity of the sea. The artist of this souvenir sheet was Juha Pykäläinen. It was printed by the offset method by BDT International Security Printing Ltd.

Greenland:

The Moon Man and the Northern lights are depicted on the souvenir sheet issued by Greenland. Clad in a polar bear hide, the Moon Man governed human and animal fertility, natural phenomena, and the hunting patterns of seal hunters. The Northern Lights flash across the sky because the dead are playing ball with a walrus head. This souvenir sheet was designed by Nina Spore Kreuzmann with typography by Morten Sturup and printed by the offset method by Post Danmark Stamps.



BRIGHAM AUCTIONS

Specializing in the Fine Art of Philately

They Said It Wouldn't Last!

But we just celebrated our 5th anniversary.



Since 1999 we have continued to successfully serve the BNA collecting public as we started.

We are collectors first. We know what collectors want. Not only when they buy but also when they sell. Have you been unlucky in your dealing with other auctioneers or dealers?

Try us out.

As collectors we recognize quality. **A**s collectors we respect your treasures as if they were ours and we will treat them as such. **W**e care. **W**e are the auction firm run by collectors for collectors.

Contact us, we offer:

- Free appraisals
- Free advice on methods of disposal
- Free Estate planning advice
- Free bidding tips

WE TRAVEL FOR WORTHWHILE CONSIGNMENTS

CONSIGNMENT OR OUTRIGHT SALE

33 YEARS OF AUCTION EXPERIENCE

COMPETITIVE COMMISSIONS

Write, phone, fax or e-mail us for a complimentary catalogue for our next auction.

Brigham Auctions Ltd.

1120 Brevik Place, Mississauga, Ontario, L4W 3Y5, Canada

Phone: (905) 238-1634 Fax: (905) 238-8399 E-mail: brigham@interlog.com



Iceland:

Odin, the supreme god of Norse mythology, is depicted on the souvenir sheet issued by Iceland. According to Norse mythology Odin and his brother created the world and the first people. Odin is omnipresent and omniscient. From his throne, Hildstálf, Odin has a view of the entire world. Odin's steed Sleipnir, which is also depicted on the stamps in the miniature sheet, has eight legs. The world ends when Odin is swallowed by Ferris, the son of Loki and the giantess Angerboda. This souvenir sheet was designed by Tryggvi T. Tryggvason and printed by offset lithography by Cartor Security Printing.

Faroe Islands:

Thor and the Midgard Serpent is depicted on the souvenir sheet issued by Faroe Islands. According to Norse mythology Ran was the treacherous goddess of the seas and, as can be expected, was feared and hated by the Faroese. She had nine daughters called billow maidens. Thor, on the other hand, was beloved by the Faroese to the extent that they named their capital Thorshavn after him. The story of Thor's slaying the Midgard Serpent can be found on the website www.tjastsi.fo. According to some, the serpent was never slain and lives in the seas surrounding the Islands. This souvenir sheet was designed by Anker Eli Petersen and printed by the offset method by Cartor Security Printing.



III. CONCLUDING REMARKS

The Top of the World of Stamps Alliance has come up with several fascinating designs for its first issue. The theme, the World of the Gods, shows artistic paintings of several Nordic myths on the stamps of the souvenir sheet from each of the eight Nordic Alliance members. It is an interesting set of designs by talented artists and printed by various printers using several printing methods. The second and third issues of the Top of the World of Stamps Alliance are planned for 2006 and 2008.

BIBLIOGRAPHY

1. "Top of the World of Stamps - a new Nordic postage stamp alliance," *Stamp Info, Finland, 2/2004, pp. 14-15.*
2. Akseli Gallen-Kallela's Luonnotar in Nordic series miniature sheets," *Stamp Info, Finland, 2/2004, pp. 12-13.*
3. See top of the world website: www.topoftheworld.nu

GET ANOTHER PERSPECTIVE ON CANADIAN PHILATELY

Nearly half our members come from the other side of the pond.

They enjoy our quarterly award-winning magazine, Maple Leaves.

Some of them come to our annual convention

Are you missing out?

For a complimentary copy of Maple Leaves and further information write to the Secretary:
John Wright, 12 Milchester House, Staveley Road, Meads, Eastbourne, East Sussex, BN20 7JX UK

CANADIAN PHILATELIC SOCIETY

 GREAT BRITAIN

SUBSCRIPTIONS PAYABLE IN CANADA

CORRECTION:

The write-up on the PSGSA on page 377 in the Nov/Dec 2004 issue of *The Canadian Philatelist* gave an obsolete e-mail address for Alan Hanks. His current address is:

alan.hanks@sympatico.ca

WANTED

We can sell your Canadian or foreign stamp collections or accumulations on consignment for the nominal fee of 10%.

Please enquire before forwarding material.

R.F. NARBONNE

Telephone 1-613-278-1555

Call Toll Free 1-800-247-5619

(Canada Only)

GREENWOOD STAMP COMPANY

PO Box 102

McDonalds Corners,
Ontario K0G 1M0

– Since 1962 –

On March 30, 2004, Canada Post issued a sheet of stamps featuring four rapid transit systems in large cities. The official reason was the 50th anniversary of Canada's first subway opening in Toronto. Also included in the commemoration were the systems in Montreal, Calgary, and Vancouver.

The Urban Trans

Calgary

I previously sent in some enquiries to Calgary Transit asking if there would be any official ceremony for the occasion. I had no reply. I found out after the fact that there had been a ceremony at the Spring Gardens complex, which struck me as strange because those are bus barns not LRT barns. Apparently the media were invited but not the lumpenproletariat.

In the meantime, I set into motion my own plans. I obtained some free LRT schedules from the Calgary Transit office on 7 Avenue SW downtown. I walked over to the post office and bought the stamps on the day of issue. I had expected to have to buy the entire sheet just to get the Calgary stamps, but fortunately they were the bottom strip on the sheet. The postie didn't mind ripping off the bottom rows for me. I then applied the stamps to the LRT schedules. While I was doing this, the postie carefully ripped off the selvedge from the remaining stamps and put the mutilated sheets into his drawer. This seems to be instinctive behaviour, as I've seen this before in various postal outlets. However, since I had no interest in the other cities, and I doubt any other purchasers in Calgary would, there was no great loss.

The postie was kind enough to let me do the cancelling of the stamps. I had trouble finding any open areas on the train schedules that would show up the postmark clearly because of the cluttered design and dark colour of the brochures. Instead I postmarked twice, once tying the stamp with the date and the second in an open area to show the town name. The final result is shown in Figure 1.

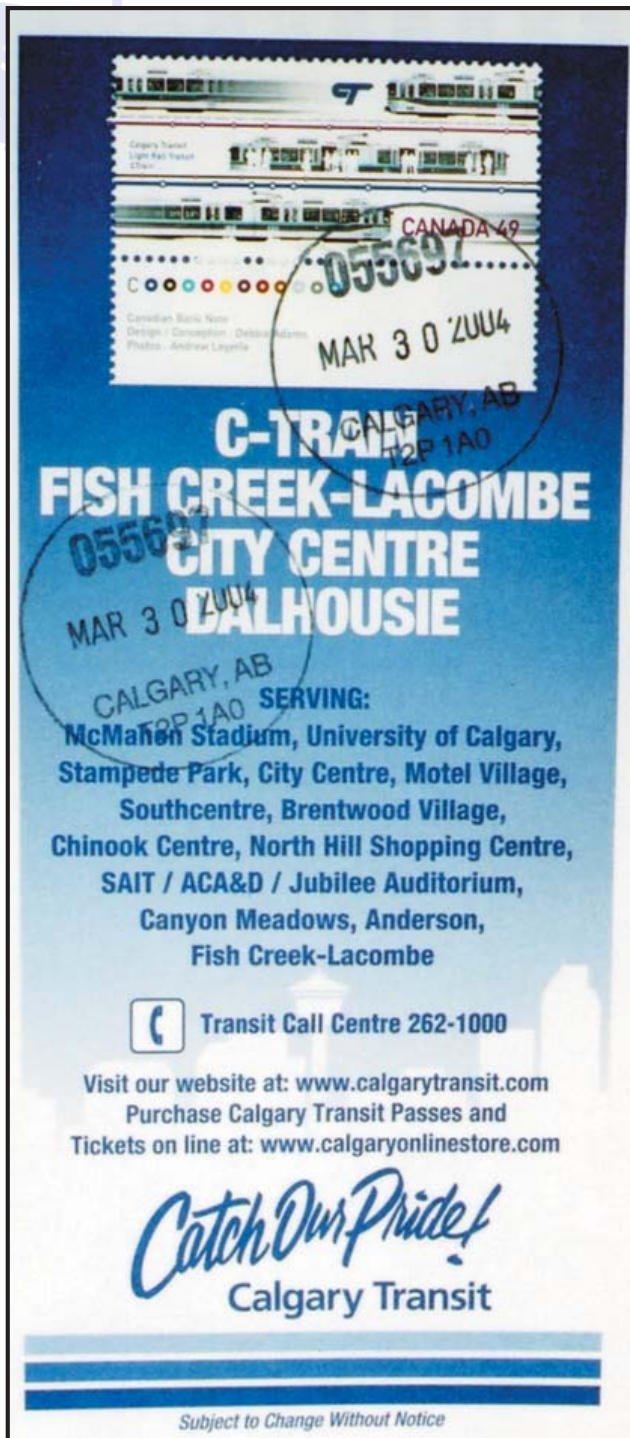


Figure 1. First-day postmark on Calgary LRT stamp mounted on train schedule.

By Dale Speirs

Transit System

The stamp design was quite nice. The C-Train tracks were shown three times in horizontal tiling. First was a train zooming leftward, then a platform with people politely queuing to get on and off (which qualifies this stamp as a science fiction topical), and then a train zooming right. I had hoped to carry my FDCs up and down the line and get postmarks at postal outlets close to the stations. Unfortunately I had an early afternoon business meeting and did not have the time.

Toronto

A non-philatelic friend of mine in Mississauga mailed me a letter dated March 30, using an Urban Transit stamp showing the Toronto train. He bought the stamp on the day of issue and dropped his letter into a post office drop box. The letter was not cleared until the end of the day and went to the sorting plant the next day. It then waited until the third day for sorting when it got an April 1 postmark despite being a cover genuinely used on the first day. I suppose from a philatelic point of view the only thing that matters is the actual date so this cover would not be considered suitable for a philatelic collection.

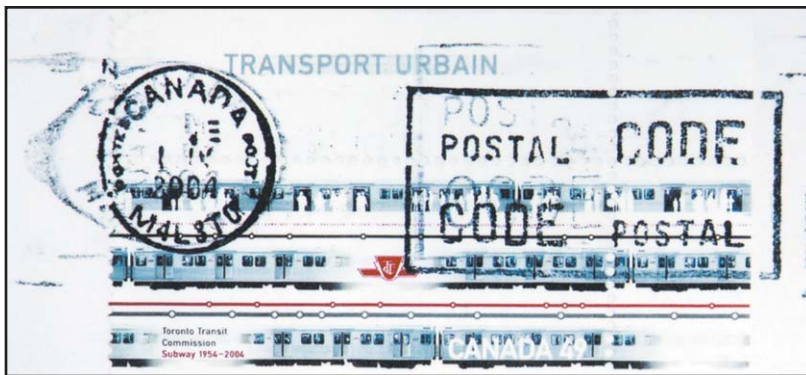


Figure 2. Third-day postmark on Toronto subway stamp, for commercial cover mailed on the day of issue.



Canada REVENUES

Semi Official Air Mail

stamps & covers

Duck, Hunting & Wildlife Conservation stamps & licenses

Huge stock.

Price lists on request.
see our huge websites
established since 1970

www.esjvandam.com
www.canadarevenuestamps.com

We buy & sell all of the above

E.S.J. van Dam Ltd

P.O. Box 300cp, Bridgenorth
Ont., Canada K0L 1H0

Tel: (705) 292-7013

E-mail: esvandam@esjvandam.com

Phone Toll Free: 1-866-EVANDAM

member: ara, aps, csda, asda, bnaps, rpsc

The **ONE ONLY**

By Ken Lewis

In Peking, the Ambassadors of various countries had their embassies, consuls and legations located in a walled part of the city known as Legation Quarter. This allowed the rest of the city to get on with its usual business without being troubled by the constant traffic to and from the various embassies. These legations were quite separate but all within a 'stone's throw' of each other. Before, during, and after the Boxer Rebellion in 1900, all the ambassadors and their staffs lived, operated, and worked from this area of the city. It was not until September 1901 that the 'Boxers' agreed to sign a peace agreement. Once this peace treaty had been duly signed a commission was set up to decide on what reparations were to be paid by and to whom. Baron Albert d'Anthouard became the President of this commission as well as being the First Secretary of the French Legation in Peking.

It is the considered opinion that someone, most probably the wife of a high ranking official at another French embassy, situated elsewhere in China, sent a Christmas present to the French First Secretary's wife (Baroness Genevieve d'Anthouard) at the Peking legation during December 1901. This present was sent via the Chinese Imperial Post and either by accident or an act of revenge being meted out by an employee became damaged. Whatever the reason, it had to be repackaged by the post office and delivered safely to the addressee. This was the only official envelope into which the present would fit, and as can be seen (from the previously prepared template) it is very large. The front and back of this cover are shown in figures 1 and 2 respectively.

Before reading this article it would put everything into context if the following were done at this stage:

From a sheet of paper, the double page of a newspaper is ideal, cut out a rectangle measuring 17 inches wide and 10 inches high (432x254mm). The size of the large cover discussed in this article is difficult to visualise and a template will give a better appreciation of the actual dimensions.

The cover has the following markings (translated as necessary) other than those printed in English on the cover:

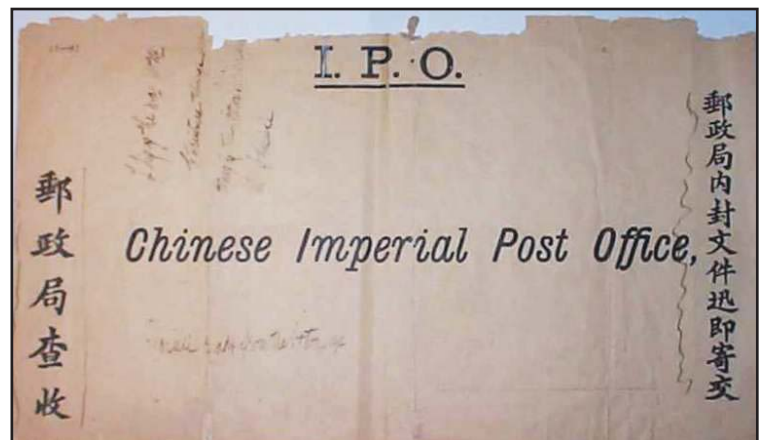


Figure 1 - Front

Left: 'Send to Post Office'

Right: 'Internal document repackaged by Post Office, mail it immediately'

Manuscript Top - 'This is the way your Christmas things arrived. This is the Baron's address in Chinese.'

Bottom: 'Chinese reads from the bottom up.'



Figure 2 - Back

Left: '(Received torn and damaged) GER 28/XII/1901' [GER being the initials of the re-packer]

Right: 'Madame / La Baronne d'Anzanud / Peking'

[Note: The correct spelling of the name d'Anzanud is d'Anthouard]

This cover has been badly torn and extensively damaged, probably when being opened in great anticipation of its contents, but has been professionally repaired to a very high standard. Because of the original damage in the post the present was delayed and delivered to Baroness Genevieve d'Anthouard a few days after Christmas. This cover was used to carry the original damaged package and details of the dates, postmarks, stamps used (if any), and other information have been lost to time and, therefore, cannot be included within this article. Luckily someone at the time had the foresight to keep the remnants of this cover from being totally destroyed and thereby saved an important item of postal history. This cover is reputed to be the only used example known to the philatelic world. As can be seen, this is a very large official postal envelope from the Chinese Imperial Post, and very few of these come onto the philatelic market.

The nationalised Chinese Imperial Post came into being in 1898: prior to this time it was known as the Imperial Chinese Post. When it changed to Chinese Imperial Post all the independent local posts were outlawed and a number of them were incorporated into the new postal service. A few local posts did carry on after 1898 but went out of business very quickly. Prior to 1898 the independent local posts were allowed to compete for business alongside the Imperial Chinese Post. In 1912 the Chinese people relinquished the monarchy and the Postal Service had to change its name again when it became under the control of the Sun Yat Sen government.

As can be seen from this example, covers without stamps (even official ones) can have a story to tell. They are more difficult to research but equally rewarding in the end. Who could know what story this cover had to tell without researching what was written on it by the post office? *
Acknowledgements

The background belonging to this piece of postal history could not be told without the unflinching assistance of French Embassy (London, England), Ministry of Defence (Paris, France), Ministry of Foreign Affairs (Paris, France), Miss C. Chaing (China) for the Chinese translations, and Ray Ireson (Quebec) who arranged for the French translations.

BIBLIOGRAPHY

Annuaire diplomatique et consulaire (Diplomatic & Consular Yearbook)

***China, 1900, The Eyewitnesses Speak* by Frederic A. Sharf and Peter Harrington**

***The Dragon Wakes, China and the West 1793-1911* by Christopher Hibbert**

***Indiscreet Letters From Peking* by B. L. Putnam Weale (aka Lenox Simpson)**



JEFF MELSKI

129 Martinglen Crescent
 Kitchener, Ontario N2E 2A3
 Email: jmelski@sympatico.ca

CANADIAN APPROVALS

A smaller dealer with a personal approach!

I DO NOT CHARGE GST!

I DO NOT CHARGE PST!

I PAY SHIPPING & RETURN POSTAGE!

**I DO REMIT ALL GST & PST
 TO YOU KNOW WHO!! OUCH!!**

RPSC READER SPECIALS:	#209 VF NH	\$45.00
	#302 VF NH	\$55.00
	#C1 F-VF NH	\$14.00
	Leatherette Stockbook 48 pages.....	\$29.75

ALL ABOVE PRICES ARE NET TO YOUR DOOR!!

Want lists are welcome and appreciated. I also will give quotes for supplies. Anything from albums to mounts to supplements.

SAVE SOME CASH, JUST ASK!!

Covers and Postal History

Contact us today for your FREE colour catalogue or view it online at www.vanceauctions.com

VANCE AUCTIONS LTD.
 P.O. Box 267P, Smithville, Ontario, Canada L0R 2A0
 Toll Free Phone: 1-877-957-3364
 Fax: 905-957-0100
mail@vanceauctions.com

Gold Coast Universal Unified Keyplates

Part IV introduced postal markings on early Issue 1 Gold Coast Keyplate stamps, forgeries, and bisected usages (Newroth, 2004). The following outlines production and varieties of the Universal Unified Keyplate (UUK) issues to 1901.

Some philatelists suggest that these stamps are less attractive than the first Gold Coast designs but I found that building a collection and studying UUK stamps is interesting and often challenging. Part of their philatelic significance is their “first” and “last” status.

Special Stamps Needed for Fiscal Uses:

1/- and 2/- Gold Coast Keyplate values were requested in 1888 from the printers De La Rue and Company, London (DLR) mainly because Gold Coast introduced payment of Court Fees by means of postage stamps which were to be affixed to official documents. The Gold Coast Colonial Secretary followed this in January 1889 with an order for new 5/-, 10/- and 20/- stamps mainly for use to account for payments for legal procedures but bearing the words Postage and Revenue. They were also available for postal use. In turn, DLR recommended use of their Universal Unified Keyplate and the three new stamps they printed are shown in Figure 1.



Figure 1. 5/-, 10/- and 20/- Green and Red. 400 stamps of each were produced with SPECIMEN overprints for UPU distribution.

Gold Coast was the first Colony to use UUK stamps. Part II of this series described the forerunner keyplate approach used for earlier Gold Coast stamps (Newroth 2003). For the new stamps, “Universal” referred to the planned application of this system to stamps for most colonies. “Unified” indicated that stamps could be used for both postal and revenue purposes and “Keyplate” referred to the printing system evolved by DLR.

Development of UUK stamps for the colonies was an evolutionary process within DLR, in part due to their development of new inks and experience in printing British stamps. Double fugitive inks were a DLR invention for stamp printing to prevent undetected removal of postal (printed) or fiscal (written ink) cancellations. Only three double fugitive colours were available from DLR about 1890 – purple (or lilac), black and green. The 1889 Gold Coast 5/- and 10/- values were double fugitive lilac with respective blue and red duties in single fugitive inks. Single fugitive inks are sensitive to hydrocarbon solvents but double fugitive inks also are water sensitive.

Each sheet of UUK stamps was printed from two plates – a “key plate” with frame, blank colony name and duty panel and the Queen’s head, and separate “duty plates” for overprinting each value. DLR provided one “key plate” for use by all territories, with separate duty plates incorporating individual colony names. Each colony paid only for production of its own duty plates and unit charges for stamp printing. The significance, efficiency and cost effectiveness of their system is confirmed by its application and longevity. UUK-type stamps were produced by DLR for many colonies and for some up until as late as the 1950s. More details on keyplate stamps are given in Lowe (1979) and Easton (1958).

The 20/- “Green and Red”:

Possibly this is one of the most glamorous Victorian Gold Coast stamps – definitely a stamp with stories. The “key plate” head was printed in green and probably was the first use of double fugitive green ink for Colonial stamp printings by DLR. The duty and Colony name was printed in single fugitive red ink. Figure 2 shows the Gold Coast Duty

Figure 2. Unique Die Proof from De La Rue Archives for Duty Plate of 20/- Green and Red. The notation orders striking 60 lead moulds to be assembled into a form (dated April 18, 1889).

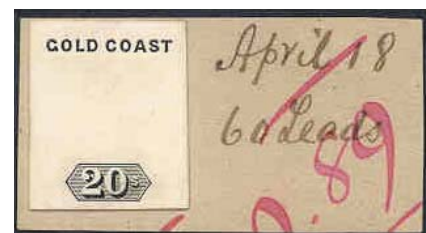




Figure 3. A pen cancelled example of the 20/- Green and Red and another after cleaning and addition of a forged grid obliteration.

Die Proof for the 20/- “Green and Red” value. Figure 3 shows a fiscally used example, and another from which a pen cancellation was cleaned and a forged grid cancellation added. Compared with the 20/- overprinted SPECIMEN in Figure 1, these show weaker colours, reflecting effects of moisture on the inks.

The 20/- “Green and Red” stamp is seldom seen as stocks in the Gold Coast were stolen by a postal official in 1893. Although most were recovered, the 20/- stamp was immediately withdrawn (Sacher, 2003). With over 14,000 printed between 1889 and 1893, presumably most were used for fiscal purposes. Possibly a few genuine postal used copies are in existence (no usages on cover are reported). Forgeries are encountered.

The 20/- “Lilac and Black”:

In 1894, DLR produced a replacement for the 20/- value using double fugitive lilac for the Queen’s head and black for the duty. Red paper was used and appears to be their first use of coloured paper for colonial stamps (Figure 4). While used multiples are seldom seen, postal used copies are common. Probably some high values were used on parcels, especially later in the 1890s but more study of their postal uses is needed.



Figure 4. 20/- “Lilac and Black”, largest used multiple recorded.

1898-1901 Issues:

Although most Gold Coast stamps of the 1875 Keyplate design were still being printed in 1897 and February 1898, their production stopped in May 1898 when DLR printed new stamps from ½d to 2/- using the UUK system. ½d, 1d, 2½d, 3d, and 6d values used mauve double fugitive ink for the key plate and various colours of single fugitive inks for duties. The key plate printings of 1/- and 2/- values are in double fugitive green ink with their duties printed in black and red.

Three key plates were used for UUK stamps printed between 1889 and 1901 (Sacher, 2003). Plate 2 replaced Plate 1 about April 1895 and Plate 3 was used after May 1898. Also, the plate format was changed from a 60 stamp setting (Plates 1 and 2) to a 120 set of two panes of 60 in Plate 3 (reference to printing of 1889-94 stamps in two panes of 60 in Sacher is incorrect).

Constant Duty Plate Varieties:

DLR was a most careful printer and no notable constant plate varieties are known on the key plate printings of the UUK design. However, I identified constant duty plate varieties on 1d and 2½d values. Figure 5 shows the indentation of the “G” of Gold Coast in the Queen Victoria 1d. Examples of the Queen Victoria stamp and the first King Edward printing of 1902, which shared the same duty plate, are shown in Figure 6.

Figure 5. Enlargement of the “Dented G” of Gold Coast in the 1d value. Plate position unknown.



Figure 6. “G” variety on Victoria and Edward (1902) 1d printings.

Another duty plate variety on the 6d value was first reported long ago on the Victorian stamp. Figure 7 shows the “dented duty panel” variety on the 6d and 1d 1901 provisionals (see below). Also this illustrates the first example reported on the King Edward printing.



Figure 7. “Dented duty panel” variety from position 43 on the 6d value, 1901 1d Provisional and 6d Edward early printing.

The 2½d value, Figure 8, shows a previously unrecorded “Deformed S” and “Long T” of “COAST” variety (position 24). Another “Long bar on T” flaw was found on position 54.



Figure 8. Enlarged view of the “Deformed S” and “Long T” of “COAST” varieties, (position 24) on the 2½d value.

High Value Colour Changes - 1900

A request from the Gold Coast in 1898 led to production of 5/- and 10/- values with colours changed to double fugitive green, with mauve and brown duties respectively. Figure 9 illustrates these stamps overprinted SPECIMEN from the first printing in January 1900.



Figure 9. New colours for 5/- and 10/- stamps.

Provisional Stamps of 1901:

Shortages of 1d Gold Coast stamps arose due to the change to a new 1d letter rate effective December 1898 and a 400% increase in mail volume from 1900 to 1901.

The 2½d and 6d values were overprinted "ONE PENNY" using the same 60 set overprint form. A number of varieties are described in Sacher (2003).

The 2d Value of 1901

Early Gold Coast 2d stamps were printed from 1879 to 1893 but this value was not produced in the UUK format until October 1901. This Gold Coast stamp was the last newly issued UUK stamp with Queen Victoria's portrait.

Produced to cover registration fees, only 7,680 were printed with the last of the other UUK values up to 2/-. Early in 1902 speculators were encouraged by a report in *The Illustrated London News* that the Gold Coast Postmaster had requests for 10 times more 2d stamps than the value printed. Even the future King of England, when he was Prince of Wales, wrote to his philatelic advisor to secure copies.



Figure 10. 2d Duty Plate Die Proof, dated 7 October 1901 and the only example reported.



Figure 11. Used block of 2d value, used in Axim, May 1902.

Figure 10 shows the Duty Plate Die Proof for this value. Used copies are much more difficult to find than mint. My studies indicate these stamps were widely distributed and used in many postal towns. The block used in 1902 shown in Figure 11 is the largest used multiple reported.

Part VI will explore the postal history of Gold Coast in the Queen Victoria period. ♣

Acknowledgements:

Assistance is acknowledged from Postal Heritage Trust (DLR Archives), the Julian Chapman Memorial Scholarship Fund, Royal Philatelic Society of London, and the West Africa Study Circle (www.wasc.org.uk/).

BIBLIOGRAPHY

Easton, J. 1958. *The De La Rue History of British & Foreign Postage Stamps 1855 to 1901*. Royal Philatelic Society London.

Lowe, R. 1979. *The De La Rue Key Plates*. Robson Lowe Ltd. London.

Newroth, P. 2003. Philatelic Treasures Part 2. Gold Coast's First Stamps. *The Canadian Philatelist*. (Vol.54, No.6)

Newroth, P. 2004. Philatelic Treasures Part 4. Gold Coast Keyplate Early Markings, Forgeries and Bisects. *The Canadian Philatelist*. (Vol.55, No.3)

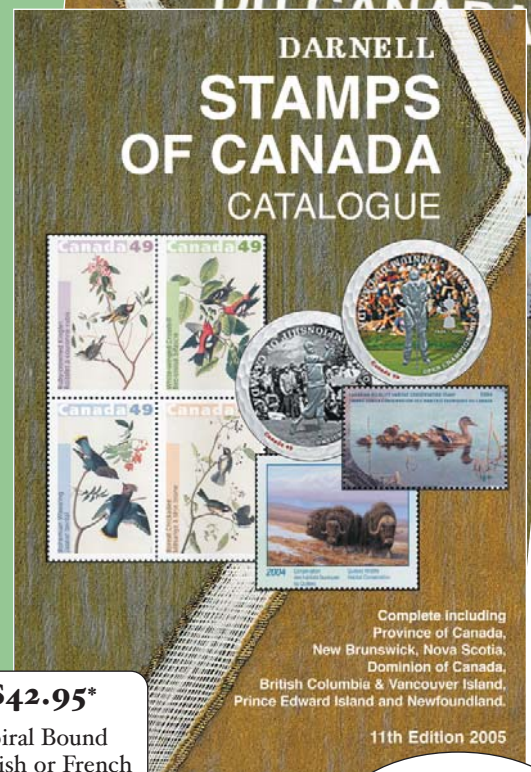
Sacher, J. (Editor) 2003. *The Postal Services of the Gold Coast to 1901*. The Royal Philatelic Society London.

THE AWARD WINNING

DARNELL STAMPS OF CANADA CATALOGUE 11th Edition 2005

NEW FEATURES!

- **Over 100 varieties illustrated!**
- **Up-dated Prices**
- For the specialist, a study of different paper, fluorescence, gum and perforation etc ... in the definitive series' such as Wilding, Cameo, Centennial, Prime Ministers, Queen & Landscapes, Flowers, Heritage Artifacts, Canadian Mammals, and Fruit Trees.
- All Provinces Listed; Province of Canada, New Brunswick, Nova Scotia, British Columbia & Vancouver Island, PEI, Newfoundland.
- Illustrated Press Sheets, Postage Due, United Nations at EXPO 67, Semi-Official Stamps, Officially Sealed Stamps, Booklets, Bundles, Perfins, Presentation Sets (including coins), Souvenir Cards, Thematic Collections, Souvenir Collections, Topical Listing, Wildlife Habitat Canada, Alberta Wildlife & Quebec Wildlife Conservation Stamps.



\$42.95*
Spiral Bound
English or French

**IN FULL
COLOUR**

Available at retailers across Canada;
Canada Post, Chapters, Indigo and your favourite dealer.

Specialized Edition Canadian Philatelic E.F.O.'s (Errors, Freaks and Oddities) 3rd Edition

This Specialized Edition has many new features!

Our long awaited Variety Catalogue is here.

- **Over 150 pages of illustrated varieties!**
- Easier than ever to use, with more details to help the novice and expert alike.
- As requested by our readers, positions of the errors are now identified.
- Modern and old errors illustrated in colour.
- Up-dated prices.
- **Only catalogue of its kind on the market.**



\$39.95*
Spiral Bound
English or French

Rousseau
230 Saint-Jacques, Old Montreal,
Quebec, Canada H2Y 1L9
Tel. : 514-284-8686 Fax. : 514-284-8596
To Order 1-800-561-9977

* Shipping and GST extra

DECIMAL COVERS TO AUSTRALIA AND NEW ZEALAND IN THE 1860s

By George B. Arfken

Via England.

Great Britain was dependent upon ships for communicating with Australia and New Zealand. Its chosen and well subsidized instrument was the Peninsular and Oriental Steam Navigation Co. (P.&O.). In 1867, the sea route from England had three sections: 1. Southampton through the Mediterranean to Alexandria, Egypt, 2. Suez, Egypt at the head of the Red Sea to Galle, Ceylon, and 3. Galle to Australia and New Zealand. The distance from England to New Zealand by this route was just short of 14,000 miles.

In the early 1860s, the only route for a Canadian letter to Australia was via England and the P.&O. route. The Canadian postal rate in 1867 for a half ounce letter to Australia was 23 cents going to England by Allan packet, 28 cents going by Cunard. Figure 1 shows a cover from London, Ont., dated OC 19 67, addressed to Melbourne (Victoria, Australia). Endorsed "Per Cunard Line", the cover was paid only the 23-cent Allan rate and was sent to England on the Allan Moravian out of Quebec, October 26. The sequence of P.&O. ships was [1]:

Pera	Southampton, Nov. 20	to Alexandria, Egypt, Dec. 3,
Simia	Suez, Egypt Dec. 6	to Galle, Ceylon Dec. 21 and
Bombay	Galle, Dec. 21	to Melbourne Jan. 13, 1868.

The arrival date is confirmed by a blue Melbourne JA 13 68 backstamp. Six Decimal covers going from Canada to Australia via England and the P.&O. have been recorded [2, 3].



Figure 1. From London, Ont., October 19, 1867, to Melbourne, Victoria via England and P.&O. packets. Courtesy of Charles G. Firby Auctions, from the Arfken Collection.

New Zealanders were vitally concerned about mail to and from the Mother country. The P.&O. packets took about nine weeks to carry mail from Southampton to Sydney, N.S.W. A local ship took the mail over to New Zealand for a total of 10 weeks. The New Zealand feeling was summarized in a New Zealand newspaper as: "We are at the fag end of an imperfect chain."

Via Panama

A possible solution was to send mail across the Pacific to Panama, across the isthmus by rail and then by Royal Mail packet to England. Sydney joined New Zealand and the Panama, New Zealand and Australian Royal Mail Co. was established [4]. The PNZ&A Co. operated 30 round trips at monthly intervals from June 1866 to December 1868. The route was Sydney - Wellington - Panama - Sydney - Wellington. Canadian Department Order No. 70, Feb. 12, 1867, announced this transpacific route and specified that a U.S. steamer to Aspinwall / Colon would leave New York on the 11th of each month. The postal rate was 22 cents per half ounce.

Figure 2 shows a cover posted in Hamilton, Ont., May 15, 1867, addressed to Woodstock via Melbourne, Australia. The original endorsement "Via Southampton" was changed to "Via New York." The 22 cent rate was paid with 17 cent and 5 cent Decimals. Note the Panama transit stamp to the left of the 17 cent Decimal. The cover was carried across the Pacific by the PNZ&A steamer *Mataura*. There are Sydney JU 27 and Melbourne JY 6 backstamps. The Firby Recording [2] lists five Decimal covers crossing the Pacific by PNZ&A packets.

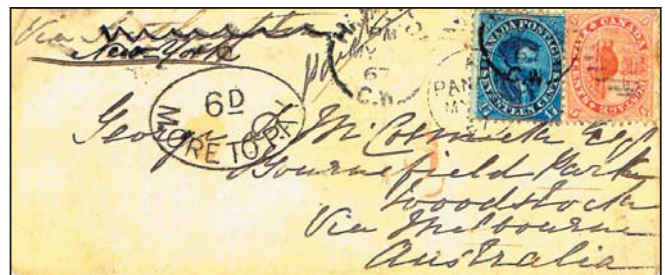


Figure 2. Hamilton to Woodstock, Victoria via Panama. Courtesy of Arthur W. Leggett.

A mourning cover in the same correspondence as Figure 2 is shown in Figure 3. Dated AU 8 67, the cover bears some interesting postmarks. The red 12 meant 12 cents to Victoria (probably for the PNZ&A Line). The U.S. claimed 10 cents for the packet to Colon and the railroad across the Isthmus of Panama. The circular postmark is the Panama transit stamp. The oval 6d MORE TO PAY, stamped in Australia, was an error. The cover was fully paid to destination. The Duckworths [5] show that this 6d charge was protested by the Canadian Post Office Department. The reason for the charge on the covers of both Figure 2 and Figure 3 has never been explained.



Figure 3. Hamilton to Woodstock, Victoria via Panama. The cover was carried across the Pacific by the PNZ&A *Rakaia*. There is a Melbourne OC 8 67 backstamp. Photo courtesy of Charles G. Firby Auctions, from the Arfken Collection.

Via England and Panama

Only two Decimal covers to New Zealand have been recorded. Figure 4 shows one of these. Dated AP 30 68, properly franked with 22 cents for the transpacific route and properly endorsed "Via New



Figure 4. From London, Ont. to Dunedin, New Zealand via England and Panama. Photo courtesy of Charles G. Firby Auctions, from the Arfken Collection.

York", the cover was missent to England on the *Allan Austrian* out of Portland, Me., May 2 !!! The cover was one cent short for going via England but the British stamped it PAID in red. They also stamped a red 5 for a 5d credit to New Zealand for the PNZ&A Line. The cover was sent to Panama by a Royal Mail packet, across the Pacific to Wellington, N.Z. by the PNZ&A *Mataura* and by a local ship to Dunedin.

The End of the via Panama Packet Service

The round trip of the Panama, New Zealand and Australian Royal Mail Co. was by the *Rakaia* from Sydney, December 2, 1868 to Wellington and Panama then back to Sydney and Wellington, February 24, 1869. The PNZ&A line collapsed financially for a variety of reasons. New Zealand's dreams of transpacific mail service were shattered. But the dreams would live again with the completion of the U.S. transcontinental railroad in May 1869 and the eventual establishment of an Auckland / Sydney - Fiji - Honolulu - San Francisco packet service. ✻

REFERENCES:

- [1] *British Maritime Postal History, Vol. 1, The P & O Bombay & Australian Lines, 1852 - 1914.* R. Kirk., privately printed.
- [2] *A Recording, privately printed, 1984, Charles G. Firby, auctioneer. This is an extensive list of pence and decimal covers.*
- [3] *Canada's Decimal Era, Arfken, Leggett, p.266.*
- [4] *Canadian Letter Mail to New Zealand and Australia via Panama, 1866 - 1869, The Panama, New Zealand and Australian Royal Mail Co., Arfken, Leggett, Elliott and Molnar, BNA Topics vol. 52, pp.7-13, Oct-Nov-Dec 1995.*
- [5] *The Large Queen Stamps of Canada and Their Use, 1868 - 1872, p. 415, H.E. & H.W. Duckworth*

ERRATUM

In our reference to the Michener Medal, named after Canada's late Governor General Roland Michener in the September-October 2004 issue, we misspelled the Governor General's name.

The Canadian Philatelist would like to apologize for its error and for any inconvenience it may have caused.

- Ed.

British Columbia Hotel Covers, 1880 to 1920

By Ken Ellison. Spiral bound, 138 pages, 8.5 x 11 inches. Published by the British North America Philatelic Society (BNAPS) and Auxano Philatelic Services, Calgary, AB. \$C84.00 for colour version; \$C31.95 for black & white. Add 10% for shipping in Canada; 15% to the U.S. and 20% overseas. GST is payable for Canadian orders. BNAPS members receive a 40% discount from retail prices. Available from Ian Kimmerly Stamps, 112 Sparks Street, Ottawa, Ontario, K1P 5B6, Canada; Phone: (613) 235-9119; email: kimmerly@iankimmerly.com Internet orders can be placed via www.iankimmerly.com/boutique/books.html

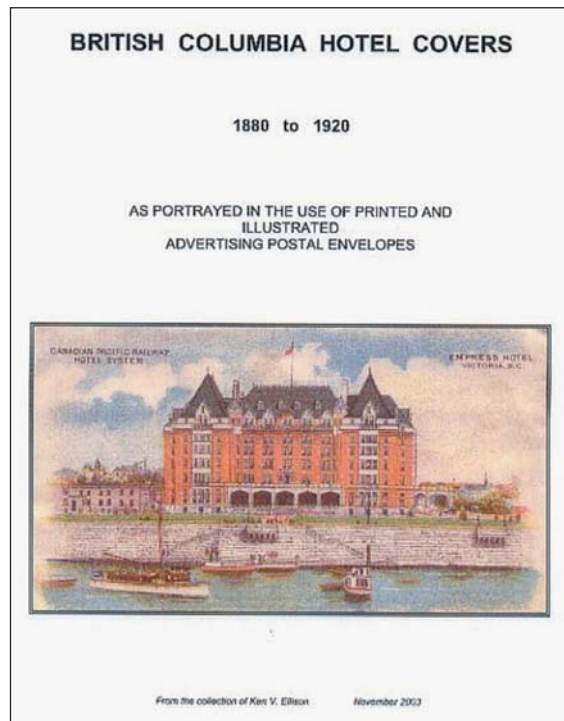
Ken Ellison's latest work features a collection of postcards and corner card covers depicting many of British Columbia's historic hotel properties. Other books that the author has penned include two dealing with philately and several others on local and family history.

Readers will be impressed with the extensive number of hotel covers and cards that Ellison has accumulated. Quite apart from the collection's value as a philatelic endeavour, it serves as a study in hotel architecture in rural, small town and big city settings. Some of the illustrations depict notably short-lived properties that all-too-often succumbed to fire and floods, a common occurrence in the province's early days. The ten hotels that went up in flames when fire destroyed nearly all of downtown Sandon in 1900 is a typical example.

Although hotel covers are popular with collectors, as are any number of other business corner card specialties (oil, insurance, newspapers, and seed companies come to mind) they are less so with philatelic judges called on to adjudicate exhibits consisting of this type of material. The dichotomy arises because corner card covers, per se, have little to do with postal history and for that reason, the argument goes, they have no philatelic significance. But with the introduction of the display class that permits non-philatelic items to be included in an exhibit that has all changed.

Of course, the material pictured in this book is franked with postage stamps and brings the material within the purview of philately. The colourfully illustrated covers and attractively designed corner cards are simply a bonus.

In addition to being of interest to stamp and postcard collectors, the book will also be of interest to postal history aficionados and historians in general. An alphabetical listing by city, a table of contents giving the mailing dates of each cover and postcard, and a listing of the covers sorted by decade are nice touches that makes this an easy-to-use book.



Readers will also learn a little more about a time when the dollar was king. A luxury hotel in downtown Victoria with hot and cold running water, at a time when this convenience was not commonly available, rented for \$2 and up per night. Additionally, the author has thoughtfully provided a brief synopsis of the history of each property to give readers insight into the business, commerce, culture, society, and way of life toward the end of the Victorian age and during the first two decades of the 20th century.

This thoughtfully prepared work takes armchair travellers on a whirlwind tour of many of British Columbia's best known tourist haunts and allows them to enjoy the scenery, while learning something of the amenities provided by the most lavish inns, and some of the most rugged, without having to leave their living rooms. ♣

By Tony Shaman

Voyage d'un collectionneur dans l'univers de la BUREAUCRATIE PENDANT LA SECONDE GUERRE MONDIALE

par Herbert G. Teal ^[1]

Le 28 septembre 1942, j'écrivais au Très Honorable W. L. Mackenzie King (Figure 1), Premier ministre du Canada de 1921 à 1926, de 1926 à 1930 et de 1935 à 1948. En tant que collectionneur de timbres-poste canadiens, j'ai préparé la page illustrée ci-contre pour mon album (Figure 2) avec la nouvelle série de timbres émis le 1er juillet 1942 relatant la participation du Canada à la guerre. "Je vous écris pour vous demander si vous avez l'extrême amabilité d'apposer votre signature dans l'espace indiqué sur la page de l'album. Ceci augmenterait grandement l'intérêt historique de ma collection." Pour assurer le retour de ma page d'album, j'ai joint une enveloppe pré-affranchie à ma lettre.



Figure 1. William Lyon Mackenzie King, c.p., député (1874-1950).

Bien que je ne l'aies pas demandé, il semble que le personnel du bureau du Premier ministre ait promptement obtenu la signature d'autres grands personnages canadiens dont les noms figurent sur la page d'album. Ces personnages sont: le comte d'Athlone, gouverneur général du Canada (de 1940 à 1946) dont l'épouse était une petite-fille de la reine Victoria^[2]. Le comte était également le frère de la reine Mary, épouse du roi George V et, par ex-

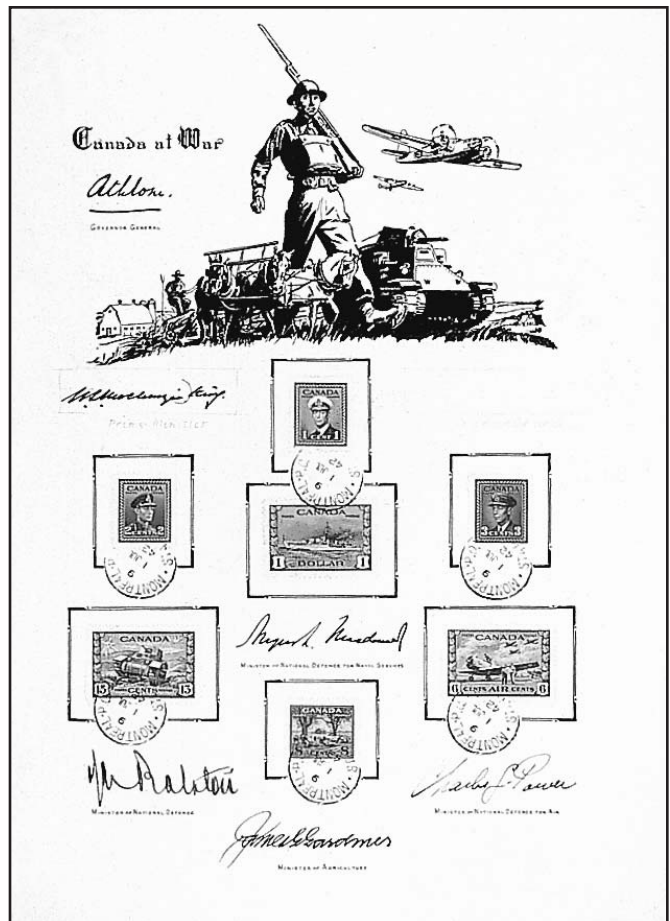


Figure 2. Ma page d'album à l'origine de la controverse.

Source : Archives postales canadiennes POS 4428.

tension, l'oncle du roi George VI; l'Honorable James L. Ralston (1881-1948), ministre de la Défense; l'Honorable Angus L. Macdonald (1890-1954)^[3], ministre adjoint de la Défense nationale pour les forces navales; l'Honorable Charles G. Power (1888-1968), ministre adjoint de la Défense nationale pour les forces aériennes; et le Très Honorable James G. Gardiner (1883-1962), ministre de l'Agriculture.

La seule signature manquante sur ma page d'album est celle de l'Honorable William P. Mulock (1897-1954), ministre des Postes de 1940 à 1945. Si son nom vous est familier, Mulock est le petit-fils du plus célèbre ministre canadien des Postes du Canada, Sir William Mulock (1844-1944). Sir William (Figure 5) a introduit de nombreuses réformes à la poste pendant son mandat de ministre de 1896 à 1905. Le 15 octobre, le bureau du Premier ministre envoie donc ma page d'album à David Adamson, secrétaire particulier du ministre des Postes, en vue d'obtenir la signature de Mulock. En bon bureaucrate, Adamson demande à ses col-



Figure 3. S. A. R. la princesse Alice, comtesse d'Athlone (1883-1981), épouse du comte d'Athlone (1874-1957).



Figure 4. Angus MacDonal, c.p., député (1890-1954).



lègues du ministère comment aborder une telle requête. C'est là que toute l'affaire commence à se compliquer pour moi.

Le lendemain, A. S. Deaville, superviseur à la division des timbres-poste, écrit à Adamson qu'il déconseille que le ministre Mulock appose sa signature sur la page d'album principalement pour les trois raisons suivantes:

1. Par souci de justice par rapport aux autres milliers de philatélistes qui espéreraient la même faveur et seraient en droit de la réclamer;
2. Parce que la page signée serait unique et revêtirait une valeur philatélique considérable, cela avantagerait injustement son possesseur par rapport aux autres philatélistes qui pourraient déposer des plaintes sérieuses; et
3. Parce qu'il y a eu grave infraction à la pratique et aux procédures postales puisque la feuille comporte de manière non autorisée le timbre à date de la Succursale "B" de Montréal.

Deaville poursuit en recommandant que "la feuille d'album... ne soit pas restituée à M. Teal mais plutôt confisquée par le ministère et officiellement détruite... En remplacement des timbres détruits, des timbres neufs pourraient être envoyés à M. Teal, de manière à ce que son geste ne lui fasse subir aucune perte effective." Deaville met ensuite en place tout un processus d'investigation pour examiner la question de ce qu'il perçoit comme une mauvaise utilisation du système d'oblitération.

Le même jour, P. T. Coolican, sous-ministre adjoint des Postes, écrit à Ludovic Germain, directeur du district postal de Montréal, pour lui de-

mander d'enquêter sur la question. Le 19 octobre, Germain répond à Coolican qu'il a "sérieusement mené l'enquête" en questionnant le personnel de la Succursale "B". Il ajoute que "personne ne se souvient d'avoir agi de la manière décrite dans la lettre et que chacun a manifestement déclaré que si une telle demande avait été formulée, elle aurait été refusée puisqu'elle est contraire au règlement." Selon cette déclaration, Germain ne peut expliquer comment j'aurais obtenu les oblitérations. Il recommande donc de me questionner. La recommandation est envoyée au bureau du ministre des Postes et, le 22 octobre, Adamson donne son accord pour l'interrogatoire. La lettre de Coolican du 23 octobre donne à Germain le feu vert pour me questionner mais indique que je ne devrais pas avoir "l'impression d'être considéré comme un criminel". Germain indique à Coolican le 26 octobre que je suis absent de chez moi et que les résultats de l'entretien ne pourront être communiqués qu'au "début de la semaine prochaine". Entre ce moment et la lettre du 3 novembre, j'ai établi une déclaration sous serment ainsi que le commis principal des postes J. A. Longpré et sept de ses employés. Les résultats ne permettent pas de déterminer qui a enfreint au règlement, la raison principale étant que quatre tampons d'oblitération manuels étaient alors utilisés à la Succursale "B" et que Germain ignore lequel des quatre a servi à oblitérer les timbres de la feuille d'album. Il envoie des impressions de chaque tampon et demande à ce que Coolican lui fasse parvenir un "photostat" de l'oblitération en cause. Dans sa lettre, Germain les décrit ainsi:

Tampon manuel no 1 - Étiquettes C.R. et reçus d'assurance (pas d'heure indiquée)

Figure 5. Sir William Mulock, c.p., député (1844-1944).



Tampon manuel no 2 - Lettres et colis par franchise postale (pas d'heure indiquée mais "AM" et "PM" ajoutés)

Tampons manuels nos 3 et 4 - Courrier recommandé, livraison par exprès et poste aérienne (heures en chiffres)

Coolican répond rapidement le 5 novembre qu'un photostat est inutile puisqu'il est évident, sur la base des impressions fournies, que le tampon manuel no 4 a été utilisé sur la page d'album.^[4]

Dans une lettre datée du 10 novembre, Germain indique à Coolican que "la responsabilité est établie". Il joint à sa lettre les déclarations sous serment de l'employé des postes Paul Forgues et de Longpré. Bien que Forgues admette d'avoir oblitéré les timbres de l'album dans sa déclaration, Longpré endosse toute responsabilité même s'il n'a "aucun souvenir de la visite de M. Teal..." mais plutôt selon le principe qu' "aucun des employés de mon bureau n'aurait agi de la sorte à mon insu et sans ma permission." Coolican ne tenait pas à clore le problème sans punir le coupable. Dans un message manuscrit à Germain, il écrit "H. E. A.: Au moins, le responsable a été débusqué. Veillez à ce que les mesures prises figurent sur son dossier au service postal." La mesure punitive en question se matérialisa sous la forme d'une lettre de réprimandes sévères à Longpré. Coolican indiqua à Germain de faire circuler un décret dans la région de Montréal stipulant que "le Ministère considérera de manière extrêmement sérieuse tout cas semblable". Il poursuivit en déclarant qu'aucun article à l'exception du courrier ne pouvait être oblitéré et que le tampon d'oblitération de la poste ne pouvait être ni antidaté ni postdaté.

Pendant ce temps, j'ai écrit au ministre des Postes le 14 novembre 1942 pour demander à Mulock de signer la page d'album et de me la retourner. Dans la lettre je présente mes excuses pour les problèmes causés par ma demande à la Succursale "B" de Montréal. Sans réponse, j'écrivis de nouveau le 16 février 1943 pour réitérer ma demande du 14 novembre. N'ayant reçu aucune réponse à ses deux lettres, j'envoie une autre lettre le 2 mars. Le secrétaire du bureau de Mulock, David Adamson, qui avait débuté toute l'affaire en parlant de la page d'album aux fonctionnaires du ministère, ébauche une lettre de réponse qui m'est destinée pour la sig-

nature de Mulock. La lettre fut postée le 29 mars. Dans celle-ci, le ministre déclare qu'il ne peut restituer la page d'album, invoquant les arguments de Deaville du 16 octobre 1942 pour justifier sa décision. Après mure réflexion et prenant le mal en partie je n'ai pas fait appel de cette décision. Par ailleurs, je trouve intéressant de constater que la page d'album a survécu toutes ces années malgré la recommandation de Deaville de la détruire. ✱

(N.D.L.R.: Comme les choses ont changé! De nos jours, les oblitérations figurent pratiquement sur tout et n'importe quoi et il est fréquent d'en changer la date. De nombreux services postaux continuent d'oblitérer avec des dates d'émission plusieurs semaines, voire de plusieurs mois après le premier jour. Si vous avez patte blanche auprès d'un concessionnaire de vente au détail, il n'est pas difficile d'obtenir de lui une oblitération avec la date de votre choix et, dans de rares cas où le concessionnaire vous fait entièrement confiance, il peut vous laisser acheter une nouvelle émission de timbre-poste avant même la date officielle.)

- 1. Herbert G. Teal, membre du St. Lawrence Stamp Club de Montréal (c1928-1940), Secrétaire du club en 1929. Exposa ses collections sur l'Égypte, le Soudan, le Sarawak dans des compétitions, principalement de l'Union philatélique de Montréal entre 1934 et 1940.**
- 2. La comtesse fut représentée comme Chancelière de l'University College des Antilles dans une série omnibus de 14 timbres des Caraïbes émise en 1951 pour commémorer l'ouverture en Jamaïque en 1948 de ce collège (Figure 3).**
- 3. Le seul de ces ministres à apparaître sur un timbre-poste fut MacDonald (Figure 4), en tant que Premier ministre de Nouvelle-Écosse sur une feuille de 10 timbres commémoratifs qui fut émise en 1998.**
- 4. Le document comportant les impressions sur lesquels cet article est fondé n'a malheureusement pas été joint aux autres documents dans les Archives canadiennes (Acc. 1993-141).**

Official Prospectus
ROYAL*2005*ROYALE
London, Ontario - May 27 – 29, 2005

Web site: www.strictly-canadian.com/Royal2005Royale/welcome.htm

E-mail: royal2005@rogers.com

The 77th National Stamp Exhibition of The Royal Philatelic Society of Canada
Hosted by the Middlesex Stamp Club at the London Convention Centre

Rules and regulations for entry of exhibits for the competition.

Address all correspondence to:

Exhibition Chairman, ROYAL•2005•ROYALE, P.O. Box 2005, Lambeth Station, London ON, Canada N6P 2A0

1. Eligibility

This National level exhibition is open to individual collectors if they meet the entry requirements contained in this prospectus. The whole of the exhibit must be the bona fide property of the exhibitor. If purchased as a unit it must have been owned for at least two years, extensively revised, and have been prepared by the exhibitor. The submitting of an entry is deemed to be an implied declaration by the exhibitor to that effect.

2. Exhibit Classification Information

National Adult exhibits (Judged by RPSC National standards)

The National Adult Classes/Divisions are intended for exhibits that fulfill one of the following criteria:

- (a) the exhibit has been awarded at least a silver medal at a previous local or regional show, or
- (b) the exhibit is deemed by the Exhibition Committee to be sufficiently advanced to be entered in this Class/Division, or
- (c) the exhibit, though new, is submitted by a exhibitor with a proven track record in previous National shows, or
- (d) the exhibit is a dealer's entry.

Youth Class (Judged by either FIP Youth Commission Regulations or by RPSC National standards)

The Youth Class is intended for exhibitors who have not reached their twenty-second (22nd) birthday on January 1, 2005. The age and birth date of each exhibitor must be indicated on the official entry form, as age groupings will be established for the Class to aid in judging. For an exhibit to be judged under National standards it should have been awarded at least a silver-bronze medal at a previous local or regional show.

General: An exhibitor may enter more than one exhibit, including in the same class. Should the exhibition be oversubscribed the Exhibition Committee, in consultation with the RPSC Liaison Officer, will make the final selection of accepted exhibits from the entry forms it has received and will seek balance and fairness in the selection process.

General Class

- (a) Postal Division*
- (b) Revenue Division
- (c) Thematic Division
- (d) Cinderella Division
- (e) Display Division
- (f) Illustrated Mail Division (includes Maximaphily)

One Frame Class

- Youth Class (ages as of Jan. 1, 2005)
- (a) Collectors aged up to 12 years
 - (b) Collectors aged 13 to 15 years
 - (c) Collectors aged 16 to 18 years
 - (d) Collectors aged 19 to 21 years

* This includes Traditional Philately, Postal History, Postal Stationery, Aerophilately/Astrophilately and Special Studies.

3. Entry

- Each exhibit shall be entered in its correct Class/Division and section on the official entry form. The jury reserves the right to re-classify any exhibit.
- A title, introduction, plan and/or synopsis page(s) must be sent with each entry. These pages may be modified later if desired.
- No exhibit will be accepted unless the prescribed fee has been paid in full at the time of submission of the Entry Form (see Section 6).
- Please make cheques payable to: Middlesex Stamp Club.
- Entry forms must be received no later than April 15, 2005. All entries will be acknowledged. Early application is important because the Exhibition Committee may close entries without further notice when available frames are filled.
- Acknowledgement of the Entry Form does not constitute acceptance for exhibition, unless so stated.
- The Exhibition Committee reserves the right to reject any exhibit, in part or whole, without assigning any reason for such objection.
- When an exhibit is rejected or reduced in number of frames by the Exhibition Committee, the (corresponding) entry fee shall be refunded.
- Failure to exhibit an accepted exhibit forfeits the entry fee.

4. Exhibit Displays

- Exhibits will be displayed in frames holding sixteen (16) pages, not to exceed 23 x 29 cm (9 x 11.5 inches), in four rows of four (4 x 4) pages.

- Entries with larger and/or odd sized pages may be accommodated but must be granted prior special approval from the Exhibition Committee.
- All exhibits must be mounted on white or light coloured pages.
- Pages must be in transparent page protectors, ideally closed on three sides, and numbered on the back in sequential order to aid in the correct mounting of the exhibit by the Exhibition Committee. Exhibits failing to comply with the above may not be displayed or judged.
- The name of the exhibitor must not appear on the faces of the pages, unless on addressed exhibited covers.
- Forgeries must be so identified in the text. Failure to do so may result in the exhibit being downgraded.
- Each National exhibit accepted for the Exhibition shall be allotted not less than two (2) frames and not more than ten (10) frames. (The exceptions are the exhibits in the One Frame Class, which will be judged by separate criteria.)
- The Exhibition Committee reserves the right to reduce frame limits in order to accommodate a maximum number of qualified entries within the exhibition; also to place exhibits according to its own plan.
- Exhibits in the Youth Class will be displayed in same type of frames as the National exhibits. Each Youth exhibit accepted for the Exhibition will be allotted at least one (1) frame and usually not more than five (5) frames. All other rules shall be identical to those in the National Exhibition.

5. Entry Fees

- National Adult Exhibits (two or more frames) \$ 15.00 (Canadian) per frame. National Adult One Frame Class \$22.00 (Canadian) an entry. Youth Class \$3.00 (Canadian) per frame.

6. Delivery

- Exhibits must be forwarded prepaid to ROYAL*2005*ROYALE, P.O. Box 2005, Lambeth Station, London ON N6P 2A0 and must be received by the Exhibition Committee no earlier than May 1, 2005, and no later than May 24, 2005, unless an exhibitor plans on bringing exhibit(s) to the show. Please note this on the entry form.
- Hand delivered exhibits must be received between the hours of 5:00 p.m. and 8:30 p.m. Thursday, May 26, 2005, or between 7:30 a.m. and 9:30 a.m. on Friday, May 27, 2005 at the London Convention Centre. Exhibitors may be able to make other arrangements for delivery with the Exhibition Committee, if previously arranged. Any exhibit received after the 9:30 a.m. May 27 deadline may be placed in a non-competitive section, or the exhibitor may find that the frames have been reallocated!

7. Return

- The Exhibition will close at 4:00 p.m. Sunday May 29, 2005. For security reasons, no exhibit or part thereof may be dismantled before the close of the Exhibition and until all visitors have cleared the exhibit area. (Travel plans should be made accordingly.)
- Exhibitors or their authorized agents must present proper proof of identity to obtain their exhibits from the Exhibition Committee following the close of the Exhibition. Exhibits not claimed in person will be returned at the expense of the owner as soon as possible after the close of the Exhibition in the manner directed by the owner. Prepayment must be enclosed. An additional charge of \$2.50 Canadian must be included for wrapping and handling. Please allow sufficient time for processing before making enquiries.

8. Insurance and Security

- Owners are advised that, in their own interest, they should make arrangements for the insurance of their exhibits.
- Exhibits entered in the Exhibition will be received, held, exhibited and returned at the risk of the owner. The Exhibition Committee will ensure that there is adequate security provided to protect the exhibits, but is not liable.

9. Liability

- Although reasonable care and caution will be taken with the exhibits, no responsibility shall attach to The Royal Philatelic Society of Canada, the City of London, the London Convention Centre, the Middlesex Stamp Club, nor members of the Exhibition Committee, nor its voluntary assistants or employees, for any loss or damage to an exhibit arising from any use or reason whatsoever.

10. Judging

- The Jury, consisting of at least five accredited RPSC judges, will be selected by The RPSC. The jury will make decisions and deliberations and consultations among themselves, in keeping with RPSC regulations. Their decisions will in all cases be final. Exhibits will be judged according to National level standards, with separate criteria for One Frame and Youth Classes, Display, and certain other Divisions.

11. Awards

- RPSC National medals will be awarded in five levels in the General and One Frame Classes: Gold, Vermeil, Silver, Silver-Bronze, and Bronze. All awards will be granted in accordance with the judged merits of the exhibit, without regard to Class, Division, or Section.
- No medal/ribbon award will be made if, in the opinion of the judges, the exhibit is of insufficient merit, but a Certificate of Participation will be given.
- A Grand Award and Reserve Grand Award will be awarded.
- Available Society and other established Awards, including APS, ATA, AAPE, BNAPS and PHSSC, will be made at the discretion of the jury.
- The best Youth exhibit (18 years or younger) will qualify for the Youth Champion of Champions competition.

12. Ruling Authority

- Any and all questions that may arise concerning the Exhibition, which are not provided for by the prospectus Rules and Regulations, shall be decided by the Exhibition Committee in its sole and absolute discretion, other than Jury decisions.

ROYAL*2005*ROYALE

London, Ontario – le 27 mai au 29 mai, 2005

Site web: www.strictly-canadian.com/Royal2005Royale/welcome.htm

Courriel: royal2005@rogers.com

The 77^e exposition philatelique de La Société royale de philatélie du Canada
Organisée par le Club philatélique de Middlesex au Centre des conventions à London

RÈGLEMENTS POUR L'INSCRIPTION DES COLLECTIONS A COMPÉTITION.

Prière d'adresser toute correspondance au:

Président du concours ROYAL*2005*ROYALE, C.P. 2005, Lambeth Station, London ON, Canada N6P 2A0.

1. Éligibilité

Cette exposition de niveau national est ouverte à tous les collectionneurs individuels, à condition qu'ils satisfassent les exigences d'admission contenues dans ce prospectus. Tout exposant doit être propriétaire de bonne foi de la totalité des pièces qu'il expose. Si ces pièces ont été achetées en tant de collection, celle-ci doit avoir été en la possession de l'exposant pendant au moins deux ans, avoir fait l'objet de révisions approfondies et avoir été préparé par l'exposant lui-même. En présentant sa demande d'inscription, l'exposant s'engage implicitement à respecter ces conditions d'admission.

2. Classification des collections

Classe/Divisions nationales - **Adultes** (évaluées selon les normes nationales de La SRPC)

Les classes/divisions nationales - Adultes concernent les collections répondant à l'un des critères suivants:

- la collection a déjà reçu au moins une médaille d'argent lors d'une exposition locale ou régionale; ou
- la collection a été déclarée d'un degré suffisamment avancé par le Comité d'exposition pour figurer parmi cette classe/division ; ou
- La collection, bien que nouvelle, est présentée par un exposant qui bénéficie d'une expérience prouvée dans des expositions nationales passées; ou
- la collection est présentée par un négociant.

Classes Junior/ Jeunesse – (évaluées selon le règlement de la Commission jeunesse de la FIP ou selon les normes de La SRPC.)

La classe Junior/Jeunesse s'adresse aux exposants âgés de moins de vingt-deux (22) ans au 1er janvier 2005. L'âge et l'anniversaire de chaque exposant doit être indiqué tel que spécifié sur le formulaire officiel d'inscription, puisque cette classe sera divisée par groupes d'âge afin de faciliter l'évaluation. Pour que la collection puisse être évaluée selon les normes nationales, elle doit avoir reçu au moins une médaille de bronze-argent lors d'une exposition locale ou régionale.

Informations d'ordre general: Un exposant peut présenter plus d'une collection, incluant dans la même classe. Si l'exposition est trop souscrite, le Comité d'exposition, en consultation avec l'officier de liaison de La SRPC, fera le choix final des collections exposées et cherchera l'équilibre et l'équité dans le procédé de choix.

Classe Générale

- Division postale*
- Division des timbres-taxe
- Division thématique
- Division Cinderella
- Division des présentations
- Division de courrier illustré (y compris la maximaphilie)

Classe Cadre Unique

- Classe jeunesse (Age au 1er janvier 2005)
- Collectionneurs âgés de moins de 13 ans
 - Collectionneurs âgés de 13 à 15 ans
 - Collectionneurs âgés de 16 à 18 ans
 - Collectionneurs âgés de 19 à 21 ans

* y compris la philatélie traditionnelle, l'histoire postale, les entiers postaux, l'aérophilatélie/l'astrophilatélie et les études spéciales.

3. Inscription

- Chaque collection est à inscrire correctement dans la Classe/Division voulue sur le formulaire officiel; le jury se réserve le droit de reclasser toute collection.
- Chaque collection doit être accompagnée d'une page titre, d'une page d'introduction, d'un plan ou d'un exposé. Ces pages peuvent être modifiées ultérieurement si désiré.
- Aucune collection ne sera acceptée à moins du règlement total des droits forfaitaires au moment de la soumission du formulaire de demande d'inscription (voir la Section 6). Chèque à libeler à l'ordre de Middlesex Stamp Club.
- Les formulaires d'inscription doivent être parvenues au plus tard le 15 avril, 2005. Un accusé de réception sera envoyé pour chaque demande. Il est recommandé de s'inscrire longtemps à l'avance, étant donné que le Comité d'exposition peut, à tout moment et sans pré-avis, avancer la date de clôture des inscriptions au cas où le nombre de cadres disponibles est atteint.
- Tout accusé de réception ne signifie pas obligatoirement que la collection a été acceptée, à moins que cela ne soit clairement stipulé. Le Comité d'exposition se réserve le droit de refuser, totalement ou en partie, toute collection, sans avoir à se justifier de sa décision.

- En cas de refus d'une collection ou d'une restriction du nombre de cadres par le Comité d'exposition, les droits d'inscription seront remboursés. En cas de non-exposition d'une collection acceptée, les droits d'inscription seront retenus.
- 4. Présentation des collection**
- Les collections seront présentées dans des cadres comprenant seize (16) pages de 23 x 29 cm (9 x 11,5 po) au maximum, dans quatre rangs de quatre (4 x 4) pages.
 - Les collections comportant des pages plus grandes ou de dimensions spéciales peuvent être proposées, mais doivent recevoir l'accord préalable du Comité d'exposition.
 - Toutes les collections doivent être montées sur des pages blanches ou légèrement colorées.
 - Les pages doivent être insérées dans des pochettes protectrices transparentes, de préférence fermées sur trois côtés et numérotées au verso dans un ordre croissant afin de permettre au Comité d'exposition de monter correctement la série. Les collections ne répondant pas à ces quelques règles risquent de ne pas être exposées ou de ne pas être évaluées.
 - Le nom de l'exposant ne doit pas apparaître sur le recto des pages, à moins qu'il ne s'agisse de plis adressés à son nom.
 - Toute falsification doit être identifiée dans le texte, sous peine de disqualification de la collection.
 - Chaque collection dans la section nationale devra être d'un minimum de deux (2) cadres et un maximum de dix (10). Une exception s'applique aux collections dans la classe **Cadre unique**, qui seront évaluées selon des critères séparés.
 - Le Comité d'exposition se réserve le droit de réduire la limite des cadres de façon à pouvoir répondre à un maximum de demandes qualifiées dans le cadre de cette exposition. Il peut également placer les collections selon ses alans.
 - Les collections de la classe **Jeunesse/Junior** seront exposées dans des cadres identiques à ceux de la classe **Adulte**. Les collections acceptées pour l'exposition seront d'un minimum d'un (1) cadre et un maximum de cinq (5) cadres. Toutes les autres règles seront identiques à celles qui s'appliquent à l'exposition nationale Adulte.
- 5. Droits d'inscription**
- Classe nationale Adulte (deux cadres ou plus) - 15 \$ (can.) par cadre. Classe nationale Adultes (cadre unique) - 22 \$ (can.) par inscription. Classes Jeunesse et Junior - 3 \$ (can.) par cadre.
- 6. Livraison**
- Les collections doivent être expédiées en port payé à ROYAL*2005*ROYALE C.P. 2005, Lambeth Station, London, ON N6P 2A0 et doivent être reçues par le Comité d'exposition entre le 1er et le 24 mai 2005, à moins que l'exposant ne prévoise d'amener personnellement la (les) collection(s), auquel cas il est prié de le préciser sur le formulaire d'inscription.
 - Les collections livrées en personne doivent être reçues entre 17 h et 20 h 30 le jeudi 26 mai ou entre 7 h 30 et 9 h 30 le vendredi 27 mai au Centre des congrès de London. Les exposants peuvent convenir d'autres horaires de livraison avec le Comité d'exposition, à condition d'un accord préalable. Toute pièce reçue après 9 h 30 au matin du 27 mai pourra être exposée dans une section hors concours, ou l'exposant pourra avoir la fâcheuse surprise de constater que les cadres auxquels il avait droit ont été redistribués.
- 7. Retour**
- L'exposition fermera ses portes à 16 h dimanche le 29 mai. Pour des raisons de sécurité, aucune collection ne peut être démontée, totalement ou en partie, avant la fin de l'exposition et avant que tous les visiteurs n'aient quitté l'aire d'exposition (il sera nécessaire de tenir compte de ces détails en cas de voyage éventuellement programmé).
 - Les exposants ou leurs représentants autorisés doivent présenter une preuve de leur identité afin d'obtenir du Comité d'exposition leur collection après la clôture de l'exposition.
 - Les collections non réclamées personnellement seront renvoyées aux frais du propriétaire dès que possible après la clôture de l'exposition, de la manière spécifiée par leur propriétaire. Pour ce faire, un paiement anticipé est obligatoire. Des frais supplémentaires de 2,50 \$ (can.) sont également obligatoires pour l'emballage et la manutention. Veuillez prévoir un délai de livraison suffisant avant de procéder à toute enquête.
- 8. Assurance et sécurité**
- Les exposants sont avisés qu'il est dans leur intérêt d'assurer leurs collections.
 - Les collections présentées à l'Exposition seront reçues, manipulées, exposées et renvoyées aux risques de leur propriétaire. Le Comité d'exposition s'engage à prendre toutes les précautions nécessaires afin de garantir la sécurité des collections, mais aucune responsabilité ne pourra cependant lui être imputée.
- 9. Responsabilité en cas de dommages**
- En dépit des précautions nécessaires prises pour protéger les collections, aucune responsabilité en cas de perte ou de dommages pour une cause ou une raison quelconque ne pourra être imputée à La Société royale de philatélie du Canada, à la ville de London, au Centre des congrès, au Club philatélique de Middlesex, aux membres du Comité d'exposition ni à leurs assistants bénévoles ou à leurs employés.
- 10. Évaluation**
- Le jury, qui comptera au moins cinq juges accrédités par La SRPC, sera sélectionné par La SRPC. Il décidera et délibérera à huis clos, en accord avec les modalités du règlement de La SRPC. Ses décisions seront, dans tous les cas, sans appel. Les collections seront évaluées selon les normes nationales, avec certains critères à part pour les classes de Cadre unique et Jeunesse, la division des présentations et certaines autres divisions.
- 11. Prix**
- Des médailles nationales de La SRPC seront décernées selon cinq niveaux: or, vermeil, argent, argent-bronze et bronze. Tout prix sera accordé en fonction des qualités de la collection jugée, abstraction faite de la classe, de la division ou de la section.
 - Aucun prix (médaille ou ruban) ne sera décerné si, de l'avis du jury, les collections sont de qualité insuffisante, mais un certificat de participation sera délivré.
 - Un Grand Prix et un Grand Prix de Réserve seront décernés.
 - Des prix de sociétés particulières et d'autres prix d'organismes officiels parmi lesquels APS, ATA, AAPE, BNAPS et PHSC seront décernés à la discrétion du jury.
 - Le meilleur exposant Junior (âgé au maximum de 18 ans) sera qualifié pour le concours Youth Champion of Champions.
- 12. Pouvoir de décision**
- Toute question concernant l'exposition et non traitée dans le règlement de ce prospectus sera soumise à la décision du Comité d'exposition à sa discrétion absolue, abstraction faite des décisions du jury.

ROYAL*2005*ROYALE

London, Ontario - May 27 – 29, 2005

Web site: www.strictly-canadian.com/Royal2005Royale/welcome.htm

Email: royal2005@rogers.com

A separate form is to be used for each exhibit. Please type or print in block letters. This form must reach the Exhibition Committee no later than April 15, 2005:

ROYAL*2005*ROYALE Exhibits Chairman,
P.O. Box 2005, Lambeth Station,
London, ON
Canada N6P 2A0

Subject to acceptance by the Exhibits Committee and to other conditions set forth in the prospectus (to which I agree) I wish to enter the following exhibit:

Utilisez un formulaire par collection. Prière de remplir en lettres majuscules. Ce formulaire doit parvenir au Comité d'exposition au plus tard le 15 avril 2005:

Président du Concours, ROYAL*2005*ROYALE
C.P. 2005, Station Lambeth,
London, ON
Canada N6P 2A0

Sous réserve de l'approbation du Comité d'exposition et d'autres conditions formulées dans le prospectus (que j'approuve), je souhaite présenter la collection suivante:

Exhibit Title / Titre: _____

Description: (Max.25 words – for inclusion in the Exhibition Program) **Description:** (25 mots maximum, pour inclusion au programme de l'exposition)

Please note: One clear copy of Title / Introduction/ Plan Pages(s) and/or a Synopsis **must** accompany this form. If the entry is accepted, these will be submitted to the jury for their advanced preparation.

N.B.: Un exemplaire bien lisible de la page titre / de l'introduction/ du plan ou de l'exposé **doit** accompagner ce formulaire. Si la demande est acceptée, ils seront soumis au jury vue de sa préparation anticipée.

Number of frames required / Nombre de cadres requis: _____ for number of pages / pour le nombre de pages _____
To be entered in the following Class/ Division / à inscrire dans la classe/division suivante:

General Class / Classe générale

- (a) () Postal Division/ Division postale*
- (b) () Revenue Division / Division des timbres-taxes
- (c) () Thematic Division / Division thématiques
- (d) () Cinderella Division / Division de vignettes diverses
- (e) () Display Division / Division des présentations
- (f) () Illustrated Mail Division / Division du courrier illustré**

* Traditional Philately, Postal History, Aero / Astrophilately, Special Studies and Postal Stationary.

Philatélie traditionnelle, Histoire postale, Aéro / Astrophilatélie, Études spéciales et Entires postaux

** Including Maximaphily / Y compris la maximaphilie.

One Frame Class / Cadre unique

()

Youth Class / Classe Jeunesse

- (a) () Collector up to age 12 years* Birth date (/ /) / Collectionneur de moins 12 ans* date de naissance (/ /)
- (b) () Collector aged 13-15 years* Birth date (/ /) / Collectionneur âgé de 13 à 15 ans* date de naissance (/ /)
- (c) () Collector aged 16-18 years* Birth date (/ /) / Collectionneur âgé de 16 à 18 ans* date de naissance (/ /)
- (d) () Collector aged 19-21 years* Birth date (/ /) / Collectionneur âgé de 19 à 21 ans* date de naissance (/ /)

*Age to be considered as of January 1, 2005. /*Âge au 1er janvier 2005.

Awards / Prix

Awards previously won by this Exhibit: (Name of the Exhibition and award level)
Prix préalablement gagnés par cette collection (nom de l'exposition et niveau du prix)

- (1) _____
- (2) _____
- (3) _____

New Exhibit / Nouvelle Collection? _____
--

Delivery of Exhibit / Livraison de la collection

- Personally / personnellement By my agent / Par mon représentant: _____
- Mail or other courier (please specify) / par courrier ou service de messagerie (veuillez spécifier) : _____

Pick-up of Exhibit / Retrait de la collection

- Personally / Personnellement By my agent / Par mon représentant: _____

Shipping Instructions/ Mode d'expédition

If exhibit is to be returned by mail/courier, please indicate service desired (self-addressed adhesive labels would be appreciated). Si la collection est à retourner par courrier ou service de messagerie, veuillez indiquer le type de service souhaité (des étiquettes auto-adhésives à l'adresse de destination seraient appréciées).

- Priority mail / Envoi prioritaire Insured Mail / Envoi assuré
- Registered mail / envoi recommandé Other/ Autre

Note: Please do not send or expect return delivery of exhibit(s) via UPS.

N.B.: Veuillez ne pas envoyer ni vous attendre à recevoir de livraison des collection(s) par l'intermédiaire d'UPS.

Amount enclosed / Montant ci-joint	
for ____ National frames @ \$15.00 each / pour ____ cadres nationaux à 15,00 \$ chacun	\$ _____
for ____ National One Frame @\$22.00/entry / pour ____ cadres uniques nationaux à 22,00 \$ chacun	\$ _____
for ____ Youth frames @\$3.00 each / pour ____ cadres <<Jeunesse>> à 3,00 \$ chacun	\$ _____
Return shipping charge (if applicable) / Frais d'expédition pour le retour (le cas échéant)	\$ _____
Return handling charge \$2.50 / Frais de manutention pour le retour 2,50 \$	\$ _____
<i>Please make cheque payable to / Chèque à libeler à l'ordre de: Middlesex Stamp Club</i>	Total \$ _____

I understand that I will be responsible for insuring my Exhibit; and I will not hold The Royal Philatelic Society of Canada; the Middlesex Stamp Club; the City of London; the London Convention Centre, nor any of their volunteers, members, committees, officers, or employees liable for any loss or damage to this exhibit. I agree to the terms of the prospectus, and confirm that this exhibit is my sole property.

Je comprends que je suis responsable d'assurer mes collections. En cas de perte ou de dommages survenus en raison de l'exposition, je ne tiendrai pas responsable ni La Société royale de philatélie du Canada, ni le Club philatélique de Middlesex, ni la ville de London, ni le London Convention Centre, ni aucun de leurs assistants, bénévoles, membres, représentants ou employés. J'approuve les modalités du prospectus et je confirme être le propriétaire unique de cette collection

Date: _____ Signature: _____

Name / Nom: _____

Nom de plume (if so desired) / Pseudonyme (si désiré): _____

Address / Adresse: _____

City /Ville: _____ Province or State / Province ou État: _____ Country / Pays: _____

Postal code / Code postal / Zip code: _____

Telephone / Téléphone (home / domicile): _____ (business / travail): _____

Fax / Télécopieur: _____ E-mail / Courriel: _____

Member / Membre: RPSC/SRPC BNAPS PHSC AAPE APS ATA

Others/ Autres _____

ROYAL



ROYALE

REGISTRATION INFORMATION

The Middlesex Stamp Club is pleased to host the National Philatelic Exhibition, designated ROYAL *2005*ROYALE and the 77th Annual Convention of The Royal Philatelic Society of Canada (RPSC) from May 27 to 29, 2005.

The year 2005 marks the 150th anniversary of the incorporation of the City of London – the Forest City – and the theme of the exhibition, Postmark: London will be celebrating London's postal & philatelic heritage.

77TH ANNUAL CONVENTION & EXHIBITION OF THE ROYAL PHILATELIC SOCIETY OF CANADA

The Exhibition and Meetings of The RPSC will be held at the London Convention Centre, 380 York Street. There is parking on site and more within one block. Associated societies wishing to convene meetings as part of the convention should advise the Registrar, at Box 2005, Lambeth Station, London, ON, N6P 2A0 as soon as possible. Every effort will be made to accommodate your requirements.

ACCOMMODATION

London is an attractive, popular destination, easily accessible by road, rail and air, centrally located between Toronto, Buffalo, and Detroit. As there are already other major events scheduled for this same weekend in 2005, we encourage you to book your rooms without delay. Visit our web site at www.strictly-canadian.com/Royal2005Royale/welcome.htm for a selection of accommodations, or contact your local travel agent.

HOW TO GET TO LONDON

For travellers by road, take Highway 401 to the Wellington Road North exit. There are rail connections to the downtown VIA Railway Station. As well, there are many flights to London International Airport, connecting through Toronto or Detroit and direct from some points in Western Canada.

ACCOMPANYING MEMBERS PROGRAM

Friday, May 27 – Tours of Fanshawe Pioneer Village & Labatt's Pioneer Brewery.

Saturday, May 28 – Sparta Country Tour in the morning with lunch in the town of Sparta, followed by a winery tour in the afternoon.

(free transportation will be provided but participants will be responsible for their lunches)

PLANNED SOCIAL EVENT

Friday, May 27 – Mardi Gras, West Haven Golf & Country Club.

(transportation, food and entertainment provided; cash bar)

RENSEIGNEMENTS SUR L'INSCRIPTION

Le Middlesex Stamp Club est heureux d'accueillir l'exposition internationale de philatélie, ROYAL *2005*ROYALE, à l'occasion du 77e congrès annuel de La Société royale de philatélie du Canada (SRPC), qui aura lieu du 27 au 29 mai 2005.

L'année 2005 marque le 150e anniversaire de la Ville de London – The Forest City, et le thème de l'exposition, Cachet postal : London célébrera le patrimoine postal et philatélique de London.

LE 77E CONGRÈS ANNUEL ET L'EXPOSITION DE LA SOCIÉTÉ ROYALE DE PHILATÉLIE DU CANADA

L'exposition et les réunions de La SRPC auront lieu au London Convention Centre, 380, rue York. Le site dispose d'une aire de stationnement souterraine et il y a trois parcs à autos à proximité. Les sociétés affiliées qui aimeraient organiser des réunions dans le cadre du congrès devraient en aviser le registraire, à l'adresse suivante : Box 2005, Lambeth Station, London, ON, N6P 2A0, le plus tôt possible. Nous nous efforcerons de satisfaire à vos demandes.

HÉBERGEMENT

London est un endroit de choix pour la tenue de congrès. Facilement accessible par voie routière, ferroviaire ou aérienne, elle forme un point central entre Toronto, Buffalo et Détroit, ce qui en fait une destination populaire. C'est pourquoi nous vous proposons de faire vos réservations dès maintenant. D'autres événements importants doivent avoir lieu durant la même fin de semaine. Vous trouverez toutes une sélection de possibilités d'hébergement sur notre site Web.

COMMENT SE RENDRE À LONDON

Les voyageurs qui veulent s'y rendre en véhicule automobile devront emprunter l'autoroute 401 jusqu'à la sortie Wellington Nord. De nombreuses voies ferrées sont reliées à la gare Via, dans le centre-ville, et il y a beaucoup de vols vers l'Aéroport international de London, d'où l'accès à l'autoroute 401 est possible via Airport Road.

PROGRAMME À L'INTENTION DE CEUX QUI ACCOMPAGNENT LES CONGRESSISTES

Le vendredi 27 mai – visite du village de pionniers Fanshawe et de la brasserie Labatt.

Le samedi 28 mai – visite en campagne avec le Sparta Country Tour et dîner à Sparta.

(Le transport est offert gratuitement, mais non le repas)

ACTIVITÉ SOCIALE PRÉVUE

Le vendredi 27 mai – buffet du Mardi gras au club de golf West Haven Golf & Country.

ROYAL



ROYALE

REGISTRATION FORM / FORMULAIRE D'INSCRIPTION

Name / Nom: _____

Street / Rue: _____

City / Ville: _____

Province: _____ Postal Code / Code postal: _____

Telephone / Téléphone: _____

E-mail / Courriel: _____

COST PER PERSON / COUT PAR PERSONNE	TOTAL
Full Registration / Inscription à toutes les activités	\$125.00 x _____ = \$
AND extra tickets OR single events only / Billets supplémentaires OU une seule activité	
Awards Banquet*	
Banquet de remise des prix*	\$50.00 x _____ = \$
President's Reception*	
Réception du président*	\$20.00 x _____ = \$
Friday Evening Mardi Gras*	
Souper Mardi gras du vendredi soir*	\$60.00 x _____ = \$
	TOTAL \$

** Please advise us of any special dietary concerns you may have.*

Please send this form and your cheque payable to **Middlesex Stamp Club**, in Canadian currency, to:

The Registrar, P.O. Box 2005, Lambeth Station, London, ON N6P 2A0.

**Si vous avez des besoins alimentaires particuliers, veuillez nous en faire part.*

Faites parvenir le présent formulaire d'inscription et votre chèque payable en monnaie canadienne à:

The Registrar, Middlesex Stamp Club, P.O. Box 2005, Lambeth Station, London, ON N6P 2A0.

The Law Stamps of Yukon

By Ian McTaggart-Cowan. Spiral bound, 104 pages, 8.5 x 11 inches. BNAPS Exhibit Series #33). Published by the British North America Philatelic Society (BNAPS) and Auxano Philatelic Services, Calgary, AB. \$C70.00 for colour version. \$C30.50 for black & white. Add 10% shipping charges in Canada; 15% to the U.S. and 20% overseas. GST is payable for Canadian orders. BNAPS members receive a 40% discount. Available from Ian Kimmerly Stamps, 112 Sparks Street, Ottawa, Ontario, K1P 5B6, Canada; Phone: (613) 235-9119; e-mail: e-mail: kimmerly@iankimmerly.com Internet orders can be placed via www.iankimmerly.com/boutique/books.html

The Law Stamps of Yukon by Ian McTaggart-Cowan is the 33rd in a series of publications depicting award-winning exhibits shown at British North America Philatelic Society conventions by members of the Society. Available in a colour version, or in black and white, the book is a useful primer on how to prepare an exhibit that will appeal to the judges and the public alike.

With only a small percentage of BNAPS members attending any given convention, executive members of the Society perceived an opportunity to provide a service to its members and to the philatelic community at large by making copies of award-winning exhibits available to a much wider audience. Prospective exhibitors will find this work invaluable as a guide to exhibiting at the higher levels of competition.

Except for a couple of pages of information that are normally an integral part of exhibits at this level, the work follows the usually accepted principles of competitive exhibiting. Missing is the requisite title and plan and scope pages. In

their place, McTaggart-Cowan has penned a one-page introduction that suffers somewhat from inattentive proofreading. Paragraph indentations are inconsistent – varying between one and four spaces for no apparent reason – as are the spacing between paragraphs, and the centring of title headings. Fortunately, this seeming slipshod editing is not carried through to the exhibits pages themselves. All are exemplars of what exhibits pages should look like.

If the exhibitor had had the foresight to include the exhibitor’s plan and scope pages, readers might possibly not be left in the dark as to the existence, for instance, of essays or other pre-production items.

The exhibit begins with the obligatory die proofs, trial colour proofs for all known denominations, mint copies of the stamps as issued, a comprehensive showing of used issues, multiples, and an array of proper usages on legal documents. Even a cursory glance at the material reveals why this is an award-winning entry.

From the introduction, readers learn that two series of Yukon Law stamps exist. One was issued for use on documents for the Mining Court, also known as the Gold Court; the other for use in the Territorial Court. Examples of each are amply illustrated in the exhibit.

The Yukon Gold Rush was a romantic era that McTaggart-Cowan has captured in the write-up of his material. The many legal documents that he has included give readers some idea of life in the far North at the turn of the 20th century. His work exemplifies how revenue stamps and collateral material offers a glimpse into a time and place that for many of us conjure up images of Mounties and mining camps, dog sleds and dance hall girls, gamblers and sourdoughs. It was a time when a melange of often-desperate men, thrown together for a brief period, chased dreams of instant riches that eluded all but a fortunate few. ❁

By Tony Shaman



PALMARES / RÉSULTATS

This column reports the results of philatelic and literature awards in national-calibre exhibitions in Canada and the awards won by RPSC members, Canadian owned exhibits and exhibits of Canadian material in international exhibitions.

Cette chronique liste les résultats obtenus dans les expositions philatéliques et de littérature nationale et les expositions quasi-nationales d'intérêt aux lecteurs ainsi que les résultats obtenus par les Canadiens, les membres du SRPC et les collections de matériel canadien dans les expositions internationales.

SINGAPORE 2004 • August 28 - September 1, 2004

WORLD STAMP CHAMPIONSHIP *

FINALIST FOR WORLD STAMP CHAMPION FINALISTE POUR LE CHAMPIONNAT MONDIAL

- The Brigham Collection - The Province of Canada: The Pence and Cents. 1859-1867

GOLD/OR

- Bridgetown - Barbados 1686-1882
- W. Danforth Walker - Barwani: A Princely Indian State

LARGE VERMEIL / GRAND VERMEIL

- Malcolm Groom - Tasmanian Postal Stationery
- Richard Malott - Interrupted (Crash) Covers to, from and within Canada by Canadian and Foreign Airlines 1918-1984
- Geoconstant - Greco-Roman Sculpture, Historical Development and Influence (Best exhibit of the class)
- Philip Stager - Coconuts

VERMEIL

- Zuoyu Yuan - To Germany for the Olympics

LITERATURE CLASS

VERMEIL

- Newfoundland Specialized Stamp Catalogue, 5th Edition, 2002

LARGE SILVER/GRAND ARGENT

- RPSC - The Canadian Philatelist / Le Philatliste Canadien, Vol. 54, 2003

SILVER/ARGENT

- Charles Lablonde - World War II Mail from Switzerland to Great Britain, Canada and the United States

ONE FRAME CLASS

GOLD/OR

- John G. McEntyre - Canada 1859 17-cents First Cents Issue
- Philip Stager - Pineapples

SILVER/ARGENT

- The Brigham Collection - The Unissued MacDonald-Cartier Centennial Stamps of 1914
- Charles J. G. Verge - Ireland - The Post Office Dispute of 1878
- Ingo Nessel - Hong Kong: Major Branch Post Offices 1898 - 1953

* *The World Stamp Championship is a new class for exhibits that have won the Championship class at a previous International exhibition. Twenty-five exhibits were entered and six (including Ron Brigham's Pence and First Cents) were chosen as candidates for the World Stamp Championship. The winner was an exhibit of 19th century Siam. / Le Championnat mondial de philatélie est une nouvelle classe d'exposition qui rassemblent les collections qui ont remporté le prix de la section Championnat lors d'une exposition internationale précédente. Vingt-cinq collections y participaient et six d'entre elles (incluant l'exposition « Pence » et « First Cents » de Ron Brigham) ont été choisies pour être candidates au Championnat mondial de philatélie. C'est une collection sur les timbres du Siam, au dix-neuvième siècle, qui a remporté la palme.*

VANPEX 2004 • October 8-10, 2004

Jury: Bill Robinson, Chair, Sam G. Chiu, Chris McGregor, John Powell, Mike Rhodes, Mike Sagar (Apprentice), Arlene Sullivan (Apprentice).

GOLD / OR

- Gray Scrimgeour - Trans-Pacific Steamship Mail of Canada - *Grand Award*
- Herbert L. McNaught - 1897 Jubilees - *Reserve Grand Award*
- Brian Atkins - The Postal History & Postal Markings of Shropshire, an English County
- Robert K. Lane - Railway Post Office Cancellations Used in Manitoba
- Bill Topping - British Columbia: Ship "Way Mail"
- Ian M. Mowat - Yukon Revenue Issues
- Peter Jacobi - Mining British Columbia's Heritage

VERMEIL

- Brian C. Plain - Down But Not Out
- Ian McTaggart-Cowan - The Federal Inspection Stamps of Canada
- David G. Brown - The Search for Gold: Airmail History in Northwestern Ontario

SILVER / ARGENT

- "Canmil" - A Century of Canadians in Africa, Europe and Middle East
- Gerald Kennedy - Canada's Private Airmail
- John Macco - Apollo-Soyuz Test Project
- "Napoleon" - "It Would be Sacrificing the Nation's Honour"
- Roger M. Packer - The Puppet Empire of Manchoukuo

SILVER-BRONZE / BRONZE ARGENTÉ

- David Foreman - Censorship and Japanese Occupation in Malaya and British Borneo: 1939-1945
- Norman Sung - German Offices in China (1886-1917) Kiautschou (1898-1914)

- Stan Freestone - The Iron Horse
- Robert McGuinness - Curiouser & Curiouser

BRONZE

- Swee Cheow Tan - Singapore (Definitive Issue)
- Tong Yuen - Chronicle of the Olympics (1896-2002)
- Swee Cheow Tan - UN-FAO Freedom from Hunger Campaign

ONE FRAME / UN CADRE

GOLD / OR

- Herbert L. McNaught - Canada: The Half-Cent Small Queen Issue of 1882-1897

VERMEIL

- Gary Tomasson - Identification of Genuine 5-Hole OHMS Stamps

SILVER / ARGENT

- Robert K. Lane - 19th Century Brandon Post Office and Railway Post Office Postmarks
- Chris Trainor - The First Imperforates of Chile

BRONZE

- Michael Peach - Picture Postcards: Victorian Britain

JUNIORS / JEUNESSE

VERMEIL

- James Barron - Milestones in the History of Aviation

SILVER / ARGENT

- Toma Stamenov - Definitive Design (Bulgaria 1901-2002)
- Orrin Esau - Track & Field

In a previous article I discussed philately in Nova Scotia in the 1880s when Hechler was prominent. A century later there were a number of prominent philatelists in Nova Scotia. Henry Hicks, FRPSC, FRPSL, was the doyen of a group that included Collins Baugild, FRPSC, J.J. MacDonald, FRPSC, George B. Robertson, FRPSC, Lloyd Macpherson, R.B. Mitchell, Ken MacDonald and Carl Munden. Several of the group were interested in the stamps and postal history of Nova Scotia and New Brunswick. The photo shows Collins Baugild signing the Register of Fellows of The RPSC at the September 1987 meeting of the Nova Scotia Stamp Club. Collins Baugild, J.J. MacDonald, and George B. Robertson had been elected fellows at the 1987 Fellows' meeting at CAPEX '87, which Collins Baugild was unable to attend.

Henry Hicks, 1915-1990, studied at Mount Allison University, graduating in Chemistry in 1936 and at Dalhousie University in 1937. He was a Rhodes Scholar (1937) and received the B.A. (Jurisprudence) and B.C.L. degrees from Oxford University. He was also awarded several honorary doctorates. He was prominent in public life, being, successively, the Premier of Nova Scotia, President of Dalhousie University and a member of the Senate of Canada.

He built up outstanding collections of Bermuda, and the Crown Circle Postmarks of the Commonwealth and Empire. He had equally strong collections of the Tercentenary, the Edward VII and the Bluenose issues of Canada, and the Gilbert issue of Newfoundland. Unfortunately, only collectors in Nova Scotia really had a chance to view some of these splendors as he exhibited mainly within the province.

He was very active in the affairs of The RPSC and was elected to a Fellowship in 1971, having previously been named a Fellow of the Royal Philatelic Society of London in 1958. He was the driving force behind the ROYAL*ROYALE in Halifax, in May 1965, where he had two exhibits in the Court of Honour, one on Bermuda and the other on the King Edward VII issues of Canada.

Collins Baugild, 1906-1992, attended the Nova Scotia Technical School, specializing in drafting, woodcarving and etching. His working life was spent at the Maritime Telegraph and Telephone Company, now Aliant.

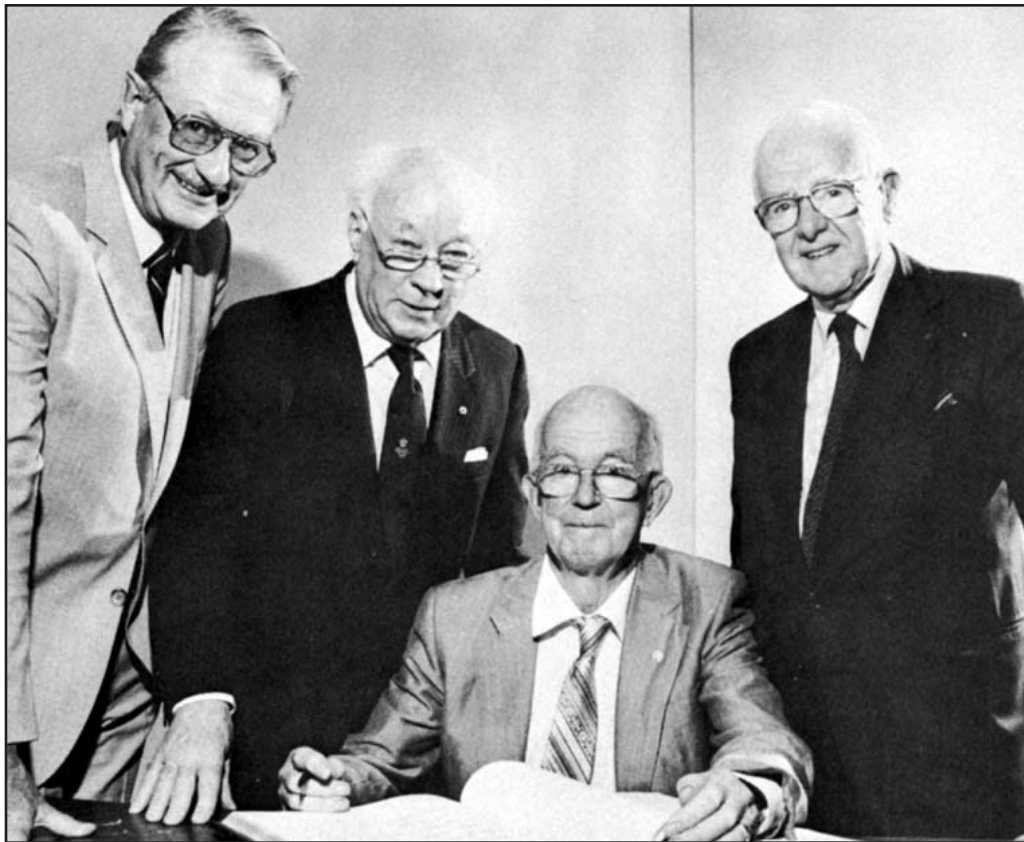
He commenced collecting at an early age, by obtaining stamps from vessels returning to his native Lunenburg. His interests centered on the British West Indies, Canada and Great Britain. He had an extensive collection of Nova Scotia Pence and Cents issues with proofs, colour trials and covers. He was also interested in early postcards and coins. In his retirement the Nova Scotia Archives employed him to arrange and write up a collection donated by a prominent Halifax businessman. I had the pleasure of viewing this collection, which is beautifully written up with his drafting expertise, before the advent of computers, and is one of the prime collections in the Nova Scotia Archives.

Collins was a longtime member of the Nova Scotia Stamp Club, having joined in 1923, and The RPSC. He assisted in the successful RPSC conventions in Halifax in the early 1940s and 1965.

J.J. MacDonald was an honorary co-chairman of ROYAL*2004*ROYALE. He was born in 1925. He entered St. Francis Xavier as an exceptional 15 year old, and graduated in Chemistry. He completed his studies with a Ph.D. in Chemistry from the University of Toronto. In 1949, he returned to his Alma Mater as an Assistant Professor of Chemistry, and there he remained for his entire career, retiring as Academic Vice-President. He was involved in a wide range of scientific, educational and community activities, such as acting as the Chairman of the Board of St. Martha's Hospital during a major renovation.

He was active in the affairs of numerous philatelic societies, including The RPSC, of which he was a long-time director. He was awarded the 2000 Geldert Medal, for his article "Charles Connell and His Stamps - The Stamp's Survival", *The Canadian Philatelist*, 51 [2000], 211. He served as editor of *The Canadian Philatelist* 1997-1999, during its transition to the current format. His collecting interests included the stamps and postal history of Nova Scotia and New Brunswick, and his definitive book *The Nova Scotia Post; Its Offices, Masters and Marks, 1700-1867* was published by Unitrade Press, Toronto, in 1985.

George Robertson, 1916-2000, studied at Dalhousie University, graduating in Arts in 1938 and Law in 1940. During the Second World War he attained the rank of Brigadier General. He was a senior partner in a prominent Halifax law firm.



Collins Baugild signs the Register of Fellows of The Royal Philatelic Society of Canada at the September 8 1987 meeting of the Nova Scotia Stamp as RPSC Fellows Dr. J.J. MacDonald (left), Senator Henry Hicks (second from left) and George B. Robertson (right) look on.

This photo is taken from Vol.38, No.6, Nov/Dec 1987 issue of *The Canadian Philatelist*.

He started collecting stamps at the age of 12, developing an early interest in the issues of Newfoundland and the British West Indies. He was able to build up a collection of used stamps by canvassing the merchants dealing with these countries and operating in Halifax. In 1936 he expanded his interests and formed a collection of mint British Colonials. After military service, he returned to Halifax and started on his special interest, a collection of mint and used stamps of Nova Scotia, including both the pence and cents issues and stampless covers prior to 1851. Part of his Nova Scotia material was often exhibited in the Court of Honour of Novapex, the last time being in 1986. In 1987 his Gibraltar mint collection from January 1, 1886 was in the Court of Honour at Novapex.

George Robertson was a member of the Nova Scotia Stamp Club from 1930. He was a director of The RPSC and was elected a Fellow in 1987. He prepared the legal work for the establishment of the RPSC Philatelic Research Foundation and acted as its first secretary.

Raymond B. Mitchell, 1902-1979, was a native of London, England. He embarked on a seafaring career at an early age. His first visit to Halifax was not long after the Halifax explosion, which occurred in December 1917.

After a distinguished career at sea, Captain Mitchell retired in the early '70s to spend time at his hobby of philately, specifically with his intense interest in the study of fakes and forgeries, in which he could certainly be described as an expert. In particular, he always stressed, caution in purchasing bisects. Capt. Mitchell was associated with Scotia Stamp Studio of Halifax, which published his *Nova Scotia Fakes and Forgeries* in 1976 and *Fakes and Forgeries of New Brunswick & Prince Edward Island* in 1979.

He worked at Scotia Stamp, part-time, where he took a genuine interest in junior collectors and assisted many a young person in building a collection. Always ready to talk stamps with anyone who showed an interest, he encouraged active membership in clubs and societies and sponsored numerous collectors to The Royal.

Lloyd Macpherson, 1913-1988, attended Acadia University, graduating in 1934. He did graduate studies in Biochemistry at the University of Toronto, with the co-discoverers of insulin, Sir Frederick Banting, and after service in the Canadian Army, with Dr. Charles Best. He obtained his Ph.D. in 1949.

In 1952, he returned to Nova Scotia, as an Associate Professor of Biochemistry at Dalhousie University, and subsequently Head of the Department.

He was appointed Associate Dean of Medicine in 1969, and Dean in 1971, the first non-medical dean.

On retirement in 1984, he devoted his time to his two main activities, birds and stamps. He had a complete collection of the stamps of the Straits Settlements, and he kept up his Victorian-era stamps of Great Britain. Eventually, he specialized in the Postal History of Nova Scotia, amassing piles of covers with their various postmarks. His book *Post Offices (1754-1981), Volume One* of Nova Scotia Postal History, was published by Petheric Press, Halifax, in August, 1982. Unfortunately, he never got to the volume on Post Marks, although he had the necessary material.

Ken C. MacDonald, 1949-1999, was from 1970 until his death one of the most active and most widely-known collectors in Nova Scotia. His primary interests were in postal history, philately, and deltiology.

His Nova Scotia postal history collections covered the city of Halifax, Halifax County, and Pictou County. He privately printed his two books, *Post Offices and Postal Routes of Halifax County* (1993) and *Post Offices and Postal Routes of Pictou County, Nova Scotia* (1996). He formed extensive collections of 20th century postcards, especially of Nova Scotia

views. He amassed an excellent Canadian stamp collection, with the Arch issue being his specialty.

As one of the accredited judges in Nova Scotia, he devoted much time each year judging at philatelic exhibitions in the province. Ken was also active in other organizations, such as the Halifax Postcard Society and national philatelic groups.

By profession, Ken was a dedicated teacher. However, many collectors met him while he was evaluating and cataloguing material at the Halifax stamp shops, Scotia Stamp Studio and latterly at Seaside Book and Stamp.

Ken formed a large philatelic and postal history library, and he read each book as he acquired it. As a result, he was a walking encyclopedia who generously shared his knowledge with others. When cancer claimed Ken MacDonald at age 50, collectors lost a friend who had made major contributions to their hobby.

Carl Munden, born in 1937, acquired a boyhood interest in stamp collecting, quickly specialised in Canada. After a break he returned to the hobby around 1965, continuing with Canada only, but soon realised that postmarks (town cancels) were of greater interest to him. Although a native of Ontario, he became particularly attracted to the four counties of Cape Breton, which are more or less a geographic entity.

Following his retirement in 1987 from the Navy, after 30 years of service, he continued his research on the postmarks of Cape Breton. This resulted in the publication, a limited release, of four volumes on the *Post Offices of Cape Breton*, published by Scotia Stamp Studio, Halifax. Volume 1 was that of Inverness County, followed by Volume 2, Cape Breton County, Volume 3, Victoria County and Volume 4, Richmond County. These books detail the history of some 750 rural post offices that were active at one time or another on the Island. Some of the postmarks are extremely rare. Subsequently he produced an update for the set, including errata, new information and more modern town cancel illustrations. These volumes are now being reprinted by Seaside Book and Stamp, Dartmouth, NS, together with the update. ♣

My article is based on various contributions in the Nova Scotia Stamp Club Newsletter and includes items from Ian Macpherson (on Lloyd Macpherson), Hugh Rathbun (on Ken MacDonald), John Hurst (on R.B. Mitchell) and Carl Munden, as well as Beverlie A. Clark, The Canadian Philatelist, 41 [1990] 19 (on Collins Baugild).

**Lighthouse**[®]

Publications (Canada) Ltd.
255 Duke, Montréal, Québec H3C 2M2
Tel.: (514) 954-3617 Fax: (514) 954-3618

New Product Guide 2005

Lighthouse and KABE products

We have **THE** solution
to all your needs

**20% special discount to
Royal members** (except on supplements)

Ask for a free copy of our product guide today!

outside Montreal 1-800-363-7082

VARIETIES

By "Napoleon"

GERMANY BEVELED 1

In November 1944, Germany issued a 12 pf + 8 pf semi-postal stamp commemorating the 21st anniversary of the Nazi attempt to overthrow the Bavarian government. On most stamps, the top of the left "1" is flat, but in position 49, the right side slopes down. See the image of the full stamp for the location and the separate enlargement for the detail.



The variety raises the normal mint never hinged value from 2 marks to 275 marks, and the used value from 3 marks to 300 marks.

Values: dividing the variety value by the value of the ordinary stamp will create a multiple the reader can apply to prices from any other catalog. For example, if the ordinary stamp has a used price of 100 marks (or francs), and the variety has a used price of 350 marks (or francs), multiplying a *Scott* or *Unitrade* price for the used stamp by 3.5 will give an approximate value for the variety. ♣

As usual, color images are available to those who e-mail me with requests (napoleon@voyager.net).

ROYAL



ROYALE

77th Annual Convention & Exhibition of the
Royal Philatelic Society of Canada

Canada's National Postage Stamp Exhibition
and Marketplace

Hours: Friday & Saturday 10a.m. - 5p.m.
Sunday 10a.m. - 4 p.m.

HOSTED BY THE MIDDLESEX STAMP CLUB

Visit the website for more information at:
www.strictly-canadian.com/Royal2005Royale/welcome.htm

London Convention Centre • 27-29 May, 2005
300 York Street, London, Ontario

Accommodations

Hotel accommodations are available to suit every taste and budget. Early booking is advised since there are many activities in London during this time period.

Hilton London
1-800-445-8667

Delta Armories Hotel
1-800-668-9999

Comfort Inn Downtown *
1-800-424-6423

Residence Inn By Marriott *
1-877-477-8483

Station Park All Suite Hotel
1-800-561-4574

Idlewyld Inn
1-519-433-2891

Four Points By Sheraton *
1-519-681-0680

Best Western Lamplighter Inn
1-519-681-7151

Ramada Inn
1-519-681-4900

Radisson Hotel and Suites
1-519-668-7900

Howard Johnson Hotel
1-519-681-1550

* indicates a hotel where a block of rooms has been reserved for Royal 2005 Royale

Transcribing Sounds

The Runic Alphabet

By Michael Madesker, RDP, FRPSC

The runic alphabet, *furtherken*, was used by the Vikings during the 8th to 11th centuries CE. Theories of its origin consider the possibility that it was modified from either the Latin, Greek or Etruscan writing. The origin of its name is also shrouded in mystery with derivation possible from the Old Icelandic *runa*, secret or Middle High German *rune*, whispering. Runes were replaced by the Latin alphabet as Christianity was replacing the cult of Aesis. Runes are found today in Scandinavian countries and their dependencies (carved into wood or stones.) The shape of letters, upright and slanting, was created for ease of carving them into wood fibres.

The original runic alphabet consisted of 24 letters that were reduced by the Vikings to 16. This was, eventually, found inadequate and some of the runes transcribed more than one sound.



f	u	th	o	r	k	h	n	i	a	s	t	b	m	l	R
v	v	a		g	g			e	ä		d	p			
		o	ä					ä	e						
		y						y							
		ö						j							



The upper row shows some of the ordinary runes while the lower has the simplified kerkvist, short twigs. Stungna, dotted runes were introduced at a latter stage and became part of the ordinary runes.



e g y d p



Represents a nasal *a*



Represents a sound equal to *th* as in the English word "thing"



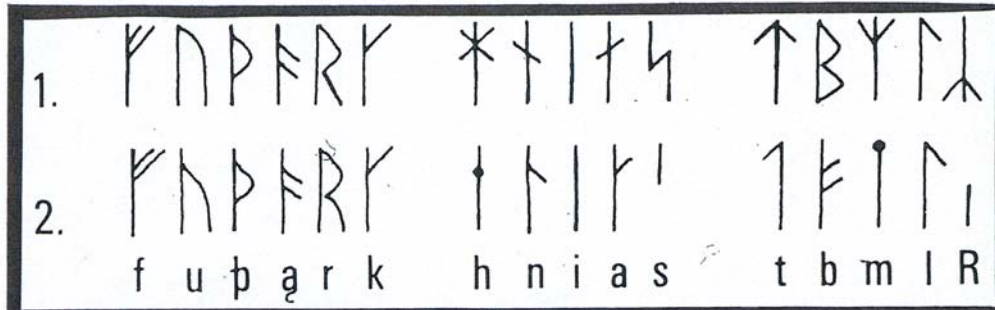
Represents a final *r*, a breathed sound as in Swedish *sju*, seven or *sjuk*, sish

Swedish texts translated by Bengt Bengtsson



RUNIC ALPHABET

The runic alphabet in the latter part of the 10th century CE, began evolving into the Young Danish (first line in the illustration below) and the Young Swedish-Norwegian (second line) versions. The inscriptions on the Alstad Stone, located in the Oppland County, on the Norwegian stamp, were carved in the Ringerike ornamental style dating to the 11th century CE. Both inscriptions, carved approximately 100 years apart, were dedicated to the memory of two fallen sons.



The next stage in the alphabet's development created the Mediaeval Runic Alphabet containing 24 letters. It is in this script that one of the most important collections of Old Norse literature, the Heimskringler, was written. The best known of these is Olaf's Saga (an Old Norse word for a heroic tale), describing the life and exploits of Olaf II Haraldsson, 995-1030. The King was cononized as St. Olaf and is the Patron Saint of Norway. He is credited with spreading Christianity in his kingdom. St. Olaf died in battle at Stikelstad.

The author of Olaf's Saga was Snorri Sturluson, a native of Iceland, 1179-1241. Snorri was a descendant of Egill Skallgrimson, a poet, hero and likely the model for the anonymous Egrill's Saga with which Snorri is credited. A courtier, judge, and politician Snorri Sturluson was assassinated by order of Haakon IV, King of Norway on suspicion of disloyalty.



The assistance of Egil Thomassen, a native of Oppland County, Norway, is gratefully acknowledged

Postage Stamp Auctions from...

John Sheffield Philatelist Ltd.

Featuring collections, large lots, better single stamps, and postal history from around the world!

Write, phone or email for a copy of our upcoming sale catalogue.

www.johnsheffield.com

P.O. Box 81, Lambeth Stn.,
London, ON Canada N6P 1P9

Telephone: (519) 681-3420

Email: john@johnsheffield.com



CPSGB

CANADA & PROVINCES

Visit our Web site at: www.canstamp.com
or order a FREE catalogue by mail or e-mail.

Bi-Monthly 3000+ lot auctions specializing in items from \$10 to \$10,000.



Coates & Coates Philatelist

University Plaza, Box 63064
Dundas, Ontario L9H 6Y3 Canada
Ph: 905-627-8381 • Fax: 905-627-5586
canstamps@sympatico.ca

Canada - Imperial Penny Postage 1898

By Fred Fawn, Spiral bound, 154 pages, 8.5 x 11 inches. BNAPS Exhibit Series #32. Published by the British North America Philatelic Society (BNAPS) and Auxano Philatelic Services, Calgary, AB. \$C96.00 for colour version; \$C34.95 for black & white. Add 10% for shipping in Canada; 15% to U.S. and 20% overseas. GST is payable for Canadian orders. BNAPS members receive a 40% discount. Available from Ian Kimmerly Stamps, 112 Sparks Street, Ottawa, Ontario, K1P 5B6, Canada; Phone: (613) 235-9119; email: kimmerly@iankimmerly.com Internet orders can be placed via www.iankimmerly.com/boutique/books.html

Fred Fawn's new book illustrating his Map Stamp exhibit is the 32nd volume in the BNAPS Exhibits Series. This particular exhibit is especially noteworthy because it has achieved what few other single-issue studies have accomplished: it has taken a Gold award as well as the Felicitations of the Jury at the international competitive level.

Individuals who were unable to attend either CAPEX 87 or CAPEX 96 in Toronto now have an opportunity to view an award-winning exhibit that was also shown at AUSTRALIA 84 & 99, DENMARK 87, SOUTH AFRICA 98, CHINA 99, LONDON 2000, PHILIPPON 2001, AND BANGKOK 2003.

Included in the exhibit are the usual items that one expects to see in entries of this high calibre: essays, die and plate proofs, working proofs, a plethora of issued material, large multiples, covers, cards, and so on. But this study goes beyond that. It includes items, many of them unique, that round out the story of Canada's first multi-coloured stamp issue.

The exhibit includes several letters exchanged between top postal officials that led up to the issue's official release on December 7, 1898. Included is a letter exchanged between Sir William Mulock, Canada's Postmaster General at the time the Map stamp was issued and Sandford Fleming, designer of Canada's first postage stamp, the 3-pence Beaver. Also illustrated in the book are such rare items as a 25-stamp proof sheet of the unissued Plate 4, a study of stamps printed on thick papers whose gauges have not been reported, and a depiction of an Imperial Penny Postage gold medal struck in commemoration of the 1898 Toronto Industrial Fair & Exhibition.

Examples of re-entries abound as do cancels such as fancy corks, rollers, squared circles,

Toronto 2-ring and London 3-ring, Ottawa crown cancels, duplexes, and flags among others.

Readers must be cautioned when referring to the author's Plan and Scope page, reproduced on the first page of the book, a portion of which was apparently prepared for a 6-frame exhibit. The page numbers as shown appear to refer to the pages of the exhibit and should not be confused with an index showing the page numbers in the book.

A review such as this can hardly do justice to the plethora of scarce and rare material illustrated in this work. To do the material justice, each page would need to be described individually. Suffice it to say that an investment in this book by anyone with even the slightest interest in the world's first Christmas stamp is money well spent. ❁

By Tony Shaman





To The "BEAVER" STAMP

By Chas. E. Jenney

'Tis a Canada five-cent – a "beaver,"
In the parlance of philatelists

Very common – worth 12 cents a dozen,
As you learn from the dealer's price list;

But a dull, badly cancelled, red fiver,
Passed unnoticed 'mongst pence issues rare,

Yet it bears a Canadian emblem,
From its home, out abroad – everywhere.

And when all the old days shall have vanished,
And the present has faded to past,

And in history alone is recorded
Days and deeds which will memory outlast,

'Midst the curious antiques and relics,
In an album all faded and worn,



Comes to light this old Canada "beaver,"
Badly cancelled, and faded, and torn,
What a dream of past ages 'twill lead to,
How the mind of the future will gaze

On the frontier scenes of the New World,
Long ago in colonial days;

When the trapper kept long lonely vigils,
In a land of wild beasts and wild men,

When the woods stretched from ocean to ocean,
And the beavers infested each glen;

When the red men through virginal forests,
With light mocassin, stalked moose and deer,

And his wigwams were staked in the valleys,
With the fields of the golden maize near;

When the sons of the forest were pitted
With the bold pioneer in dread strife

And the frontier villages trembled
With the fear of the hatchet and knife.



How those days that are e'en now historic,
Men will thrill as the years onward tramp,
And the past can be changed into present,
By the sight of an old postage stamp.

The Canadian Philatelist, London, Ontario,
October 1, 1893, Vol. III, No. 2, Whole no. 26.

You're invited to join The British North America Philatelic Society

BNA Topics, quarterly journal

BNA PortraitS, quarterly newsletter

Benefits include:

- Annual conventions in the U.S. and Canada.
 - More than 20 study groups actively investigating specialty areas, ranging from Large Queens to first day covers.
- Regional groups located in many cities in Canada and the U.S.

Contact the Secretary:

Peter Jacobi

#6 – 2168-150A St.

Surrey, BC V4A 9W4 Canada

e-mail: beaver@telus.net

Web site: <http://www.bnaps.org>



BNAPS – The Society for Canadian Philately



PHSC

APS Affiliate 67;
PHS Inc. Affiliate 5A;
RPSC Affiliate 3

The **Postal History Society of Canada** was founded to promote the study of the postal history of Canada and its provinces. It publishes the quarterly **PHSC Journal**, whose contents range from fully-researched feature articles to items of current interest – from the pre-stamp era through postmark specialties and regional histories to modern mail mechanization.

Each year the Society holds meetings at shows across Canada. The Annual Meeting is held in the early summer, and is supplemented by Regional Meetings, usually featuring postal history seminars given by Society members. Eight different Study Groups are devoted to the detailed examination of various specialized aspects of postal history.

Membership dues are \$25.00 per year, with a one-time admission fee of \$1.00. For a membership application form please contact the Secretary, Dr. N. Wagner, 207, 525-11th Ave. SW, Calgary, AB T2R 0C9.

THE CANADIAN PHILATELIST TAKES LARGE SILVER AT SINGAPORE 2004

Sometimes it is necessary to experience a step backward before two ahead are possible. After two successive Vermeil awards at the international level, Bangkok 2003 and Espana 2004, your magazine earned a Large Silver medal at Singapore 2004.

Although some of our hardworking team of contributors may be somewhat disappointed with an award that is a level lower than the previous two, I would suggest that they not view it as a setback but as an opportunity to move ahead. Why not look at it as a motivator to do better next time?

Magazines, like stock markets, do not charge ahead uninterruptedly. Every once in a while it is necessary to take stock of where we are, posit our objectives and think about how we are going to achieve them.

A Large Silver medal is at the half-way mark to the top-most award level and as the arrow of time moves only forward, at least in the world as we know it, all we can do is be positive and perceive the proverbial glass as half full rather than half empty. Looking forward, we have an opportunity to make up lost ground and take that next step toward the realization of our goals.

- editor



The METER STAMP SOCIETY Quarterly BULLETIN recently editorialized whether "software-internet stamps" (these stamps apparently do not show a denominated amount) should be listed in the *United States Postage Meter Stamp Catalogue*. Convincing arguments were made for and against their listing.

The anti-listing faction took the position that these computer-generated stamps are not products of postage meter machines and, therefore, have no place in a postage meter catalogue; the pro-listing side argued that these stamps should not be precluded from being listed simply because they do not display the postage amount in dollars or cents like meter machine produced labels.

Interestingly, much the same questions can be asked of other methods currently in use to prepay postage.

For example, should Nixdorf labels be listed in a postage meter catalogue? How about permit imprints commonly used to pay for business reply mail? Or, how about, Xpress post labels?

One thing is certain: traditional postage stamps for prepayment of postage no longer enjoy the near-monopoly they once held.

Perhaps it is time for catalogue publishers to expand their back-of-book sections to include a greater variety of adhesive labels to prepay postage that post offices have introduced during the last few years.

- editor

RPSC NAMES FIVE NEW 'ROYAL' FELLOWS

At the 2004 annual meeting of The Royal Philatelic Society of Canada held in Halifax May 28-30, President Charles J.G. Verge announced the installation of five new Fellows of the Society.

To qualify for Fellow status, candidates must meet at least one of the following criteria: they have actively worked for the betterment of the RPSC; they have promoted Canadian philately extensively through writing; and/or have, through a number of activities, made Canadian philately better at the international level.

The five new Fellows are Andrew Chung, John S. Keenlyside, Graham McCleave, Jacques Nolet, and John M. (Jack) Wallace. Each has made a significant contribution to the promotion of stamp collecting in Canada.

Andrew Chung has been an indefatigable supporter of The RPSC for more than 25 years. He has been a strong advocate for stamp collecting activities in Toronto, Niagara, and the Grand Valley. As a writer/researcher his contributions have been immense. His first book, *Canadian Postage Due Stamps*, was published in 1985. Since then, his pen/keyboard has been prolific with articles and other books, the latest of which is the Second Edition of *Canada Post Official First Day Covers*, co-authored with Hank Narbonne and published in 2002. Over his career with Canada Post, he has ensured that his fellow employees are versed in philately and philatelists by conducting seminars and being available to answer questions.

John S. Keenlyside has been active for many years in local and

regional philately in his native British Columbia. He has served as a director of The RPSC, chairman of the national finance committee, and is now treasurer of the Society. His other contributions include the development of social philately in Canada on which he has lectured extensively across the country. He is a national level judge with extensive experience in Canada and the United States.

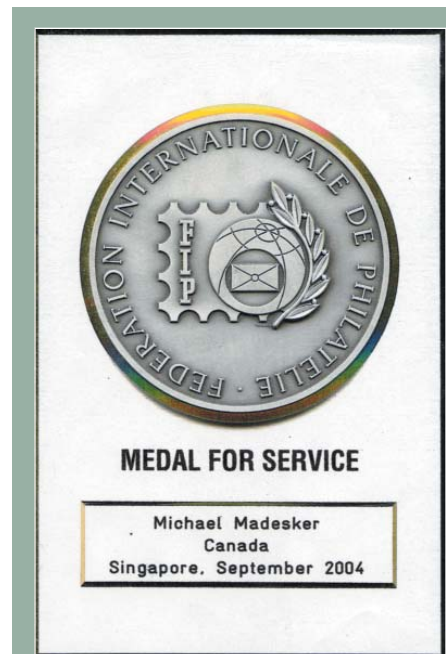
From Fredericton, New Brunswick comes *Graham McCleave* who has been a director of The RPSC since 1994 and a director of BNAPS 2002-2006. As a Royal director he co-ordinates the conventions program, a position he has held since 1997. In that capacity he has managed to set a schedule for Royal conventions well into the future, and he recently completed an update of *The RPSC Convention Guidelines*. He has also been responsible for generating national interest in shows in Atlantic Canada.

Jacques Nolet has one of the most extensive lists of publication credits of any member of The RPSC. His contributions, mostly in the French language, have been extremely significant. A native of Trois Rivières, he has promoted philately throughout Quebec, not only through his writing, but also through participation in philatelic events. He has lent his expertise to numerous organizations and societies. As vice-president of CANADA '92, he was responsible for the preparation of the event's publications.

Another native of British Columbia, *John M. (Jack) Wallace* has also given strong support to

local and regional philately in his native province. For some years, he served as a director of The RPSC, and he is a Fellow of the Royal Philatelic Society London. His work with BNAPS has earned him membership in that group's Order of the Beaver. His excellent biography of Gerry Wellburn illustrates many of the rarities of the Wellburn collection. Having judged locally, regionally, and nationally, he is now a National Judge Emeritus.

Verge "commended" the Fellows for the selecting such outstanding new Fellows. He said "their overall contributions to philately in Canada have helped give stamp collecting the high visibility it enjoys today."



The Royal Philatelic Society of Canada extends congratulations to long-time member Michael Madesker, RDP, FRPSC, on his selection as a recipient of the Medal for Service award by the Fédération Internationale de Philatélie.

WASHINGTON 2006 RECEIVES \$2,500 YOUTH GRANT

World Columbian Stamp Expo '92 has awarded a \$2,500 grant to Washington 2006 to be used towards the publication of an educational booklet about the Lewis and Clark expedition that explored the continent following the Louisiana Purchase. It will include a history of Lewis's and Clarks' adventures through stamps. Their story is a fascinating one. The duo and their 34 fellow corpsmen traveled over 8,000 miles in their trek mapping the West, meeting over 50 different Indian tribes and recording hundreds of new plant and animal species along the way. The booklets will play an integral part of Washington 2006's "Stamp Zone," an area set aside for youth and beginner collectors with a heroes theme. They will be distributed to attendees free of charge during the show. Training classes will also be held for educators interested in using the booklets and related philatelic material in their classrooms. World Columbian Stamp Expo '92 was held in Chicago, Illinois, in honor of the 500th anniversary of Christopher Columbus's famous voyage and 100th anniversary of the 1893 World Columbian Exposition. It is considered among the most successful U.S. international philatelic exhibitions ever.

Proceeds continue to be donated to noteworthy projects on behalf of the Expo organization. Washington 2006 welcomes support from individuals, societies, and businesses through memberships or donations to the international show scheduled for May 27-June 3, 2006 at the Washington, DC Convention Center. It is a 501(c)(3) organization, allowing patrons to make tax deductible contributions to the full extent of the law. W2006 is also in the process of collecting a goal of one million stamps to give to youth and beginners who come to the show. U.S. and worldwide kiloware separated into on and off-paper is welcomed. Mail these to: W2006 Stamp Zone, c/o Joan Bleakley, 15906 Crest Drive, Woodbridge, VA 22191. Include an email address to be notified when your shipment has arrived. More information about Washington 2006 can be found on their web site at www.washington-2006.org.

THE "ROYAL" LOOKS TO THE FUTURE

Graham McCleave, Director of Conventions for The Royal Philatelic Society of Canada (RPSC), says the Royal has "been successful in getting several communities to invite Canada's national stamp organization to host its annual convention on their turf."

Such was not always the case. There was a time when "we had to look for someone almost from year to year." Today, McCleave's job is easier with a completed schedule through 2009.

The convention director's bookings, though, are never secure. When St. John's (Newfoundland) Philatelic Society, which was scheduled to host the 2006 show, cancelled its intention in March, he had to scramble for a "fix" by adjusting the existing schedule.

At The RPSC annual meetings in Halifax May 28-30, the board of directors approved Calgary, which was scheduled for the 2009 event, to take the lead for 2006. The meeting then approved St. Catharines, Ontario for 2009.

ROYAL *2005* ROYALE, which will be the organization's 77th annual convention, will be staged in London, Ontario and hosted by the Middlesex Stamp Club. Activities will be at the London Convention Centre, 300 York Street, London, Ontario.

Information relating to ROYAL *2005* ROYALE is available from P.O. Box 2005, Lambeth Street, London, ON N6P 2A0 or by email at royal2005@rogers.com.

Graham McCleave says it is not too early to make reservations for London, especially since a major national hockey tournament is scheduled for the southern Ontario city the same weekend.

Other 'booked' venues for the Royal include Toronto (2007), Quebec City (2008), and Montreal (2011). McCleave says 2010 is open to any community that signifies its intention.

Charles J.G. Verge, president of The RPSC, says communities interested in hosting the Royal "should do some homework before they make a commitment." It is "a big job" he says, but in the past "some small stamp clubs have conducted very successful shows by good planning."

Graham McCleave will be happy to accept applications for future shows of The RPSC. He can be contacted at 186 Willingdon Street, Fredericton NB E3B 3A5; telephone: 506-455-3280; or email: mccleave@nbnet.nb.ca.

Information on The RPSC can be had by e-mail at info@rpsc.org or by visiting the Society's website at www.rpsc.org, or by calling 416-979-8874, toll free 1-888-285-4143.

PACIFIC EXPLORER 2005 - OFF TO AN IMPRESSIVE START

Every continent on the globe will be represented at Pacific Explorer 2005 World Stamp Expo scheduled to be held in Sydney from April 21-25, 2005.

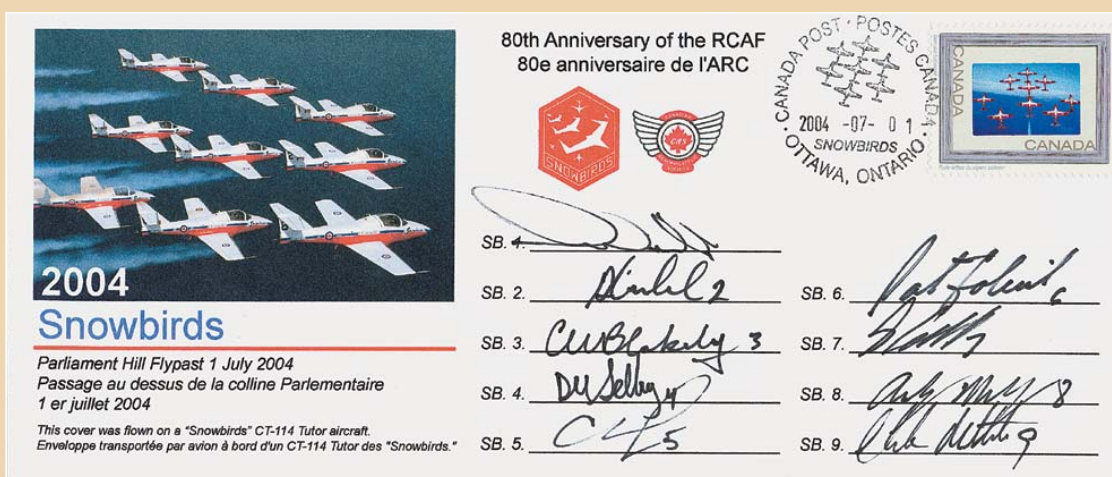
Mr Tony Shields, President of the Australasian Philatelic Traders Association and speaking on behalf of the Pacific Explorer 2005 Organizing Committee, said he was very pleased with the number of applications received. "Over 60 exhibitors have already rented stands

at Pacific Explorer 2005 and there are still a number of premium stands left and future bookings will be on a first come, first served basis," Mr Shields said.

Mr Shields said "Pacific Explorer 2005 will have something for everyone - stands selling all types of stamps and stamp-related collectables, prize-winning exhibits from around the world, special attractions for kids and some surprises from Australia Post".

All enquiries regarding sales stand rental should be directed to Ms Vicki Cairns at Exhibition Management Pty Ltd, telephone +613 9699 4699 or email vicki@exhibitionmanagement.com.

A stand holder's plan of the Sydney Convention and Exhibition Centre, which is located at Darling Harbour, will soon be available on the Pacific Explorer website at www.sydney2005.com.au.



The autographed Snowbird envelope flown over Parliament Hill, Ottawa, on July 1, 2004, bears a special picture postage stamp of the Snowbirds and is cancelled by a Snowbird cancellation from Canada Post. Data on the availability of these envelopes and a Snowbird 2004 brochure are available from R.K. Malott, Major (Retd), at 16 Harwick Crescent, Nepean, Ontario, K2H 6R1, Canada.

CLASSIFIED ADVERTISING ORDER FORM / BON DE COMMANDE ANNONCES CLASSÉES

RATES: 20 cents per word; minimum charge \$5.00 per insertion. Boxed Classified \$12.00/column-inch. Please indicate desired heading. **Classified ads must be paid in advance. GST must be paid on classified ads.**

C.P. Classified Ads
103 LAKESHORE RD. SUITE 202,
ST. CATHARINES, ON L2N 2T6

CALL Jim at
(905) 646-7744, ext 223
FAX (905) 646-0995 or
email: jims@trajan.com

TARIFS: 20 cents le mot; tarif minimal: 5\$ par insertion. Petites annonces encadrées: 12\$ par pouce de colonne. Prière d'indiquer la rubrique désirée. **Les petites annonces sont payables d'avance. La TPS est payable sur les petites annonces.**

Classification:

ALL CLASSIFIED ADS MUST BE PREPAID.
TOUTES LES ANNONCES CLASSÉES DOIVENT ÊTRE PAYÉES D'AVANCE.

PLEASE CHECK ONE / PRIÈRE DE COCHER UNE CASE.

CHEQUE / CHÈQUE **MONEY ORDER / MANDAT**
make cheques payable to: / chèques payable à: Trajan Publishing



Card No. / no. de carte: _____

Exp. Date / date d'expiration: _____

Name / nom: _____

Signature: _____

Check your advertisement for accuracy of the first insertion. **CANADIAN PHILATELIST** cannot be responsible for the cost of more than one incorrect insertion. Vérifiez l'exactitude de l'annonce à sa première insertion. **Le Philatéliste canadien** n'est responsable que du coût d'une seule insertion erronée.

COPY CHANGES NOT ALLOWED DURING LENGTH OF AD'S RUN / AUCUN CHANGEMENT DE TEXTE N'EST AUTORISÉ PENDANT LA PARUTION DE L'ANNONCE.

Abbreviations, initials and phone numbers count as one word. / Les abréviations, initiales et numéros de téléphone comptent pour un mot.

3 _____

6 _____

9 _____

12 _____

15 _____

18 _____

21 _____

OF ISSUES TO RUN IN / Parution dans: _____
numéros de la publication.

TOTAL # OF WORDS / Nombre de mots: _____

COST / Coût: \$ _____

+ 7% GST / TPS (In / au Canada) _____

= **TOTAL COST / Coût total \$** _____

All ads require name, address and phone number with order; they do not need to be used in your copy.

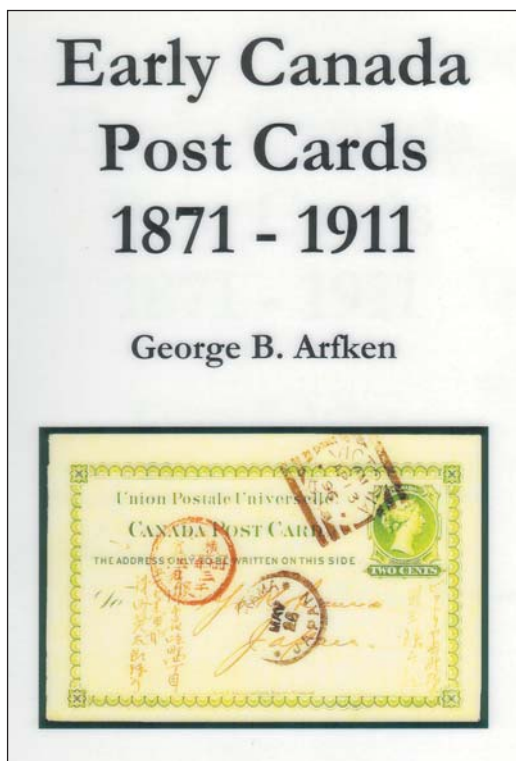
Pour commander, indiquez vos nom, adresse et no. de téléphone, qu'il n'est pas indispensable d'utiliser dans le texte de l'annonce.

Early Canada Post Cards, 1871-1911

By George B. Arfken. Spiral Bound, 134 pages, 8.5 x 11 inches. Published by the British North America Philatelic Society (BNAPS) and Auxano Philatelic Services, Calgary, AB. \$C84.00 plus 10% shipping in Canada; 15% to the U.S. and 20% overseas. GST is payable for Canadian orders. BNAPS members receive a 40% discount. Available from Ian Kimmerly Stamps, 112 Sparks Street, Ottawa, Ontario, K1P 5B6, Canada; Phone: (613) 235-9119; email: kimmerly@iankimmerly.com Internet orders can be placed via www.iankimmerly.com/boutique/books.html

The author of *Early Canada Post Cards, 1871-1911* George B. Arfken, one of our hobby's more prolific writers, begins his subject by way of a brief introduction. In it, he outlines what post card topics he will discuss in the following 134 pages of his book and points out some of its highlights along with the more important aspects of interest to post card enthusiasts. It is a useful overview that assists busy readers navigate quickly and effortlessly through the extensive postal regulations that governed the early post card era.

Equally thoughtful is the author's treatment of the book's layout: it is divided into 11 chapters, nine appendices, a useful bibliography, and a comprehensive, three-page index. This arrangement helps readers zero in on precisely what information they are looking for without having to leaf through page after page of material that may not be of immediate interest.



All 160-plus illustrations are reproduced in vivid, near true-to-life colour that make perusing the book a pleasurable experience. They alone are worth its purchase price.

Of special interest to philatelists is the section dealing with registered post cards. How many collectors, for example, have ever seen one, let alone owned one? The author devotes 20 pages to the topic, a considerable amount of space for a 134-page book. Nevertheless, the decision to invest this much space in registered cards is justified, as readers are treated to a review of registered domestic cards, including post card drop letters, cards to the United States, and Transatlantic cards to a number of different destinations.

This scholarly work will also be of interest to postal stationery aficionados as well as post card collectors specializing in the pre-picture postcard period; there is little in the book for picture postcard collectors.

The first seven chapters are devoted to domestic, Newfoundland, U.S., and overseas surface rates and uses. One of these chapters deals exclusively with UPU rates and regulations. Included in the illustrations are examples of prohibited destinations under these regulations. In effect, the use of these cards to the destinations they were intended for was "illegal" but were, nevertheless, accepted by postal clerks and sent on their way. The final chapter dealing with rates and uses, Chapter 7, illustrates a selection of cards to unusual destinations that are sure to whet the appetite of prospective collectors.

In summary, this well researched work covers several important facets of the early part of the Golden Age of post cards. The book does not go into printing errors and flaws, the various papers used to print cards and similar topics.

For postal historians whose interests extend to postcards, their uses and rates, this it is a book they will not want to be without. ❁

By Tony Shaman

THE ROYAL
PHILATELIC
SOCIETY OF
CANADA



LA SOCIÉTÉ
ROYALE DE
PHILATÉLIE
DU CANADA

NOTICE TO MEMBERS

A Call for Nominations of Directors of The Royal Philatelic Society of Canada is hereby set forth. Eight (8) Directors will be elected at the annual meeting to be held in London, Ontario, at ROYAL *2005* ROYALE on May 28, 2005.

"Nominations must be in writing and be made and seconded by members in good standing of the Corporation. The person nominated must consent to his or her nomination and such nomination, to be valid, must be received by the National Office or by the President by January 7, 2005. All nominations will be placed before the Nomination Committee who will prepare a slate of Directors of those nominated to ensure national representation based on levels of membership."

The proposed slate of Directors will be published in the March-April 2005 issue of *The Canadian Philatelist* along with a short biography of each nominee.

AVIS AUX MEMBRES

Ceci est un appel pour la nomination de candidat(e)s au poste de directeur de La Société royale de philatélie du Canada.

Huit (8) directeurs seront élus à l'assemblée annuelle qui se tiendra à London, Ontario, à ROYALE *2005* ROYAL le 28 mai, 2005.

« Les nominations doivent être présentées par écrit et faites et secondées par des membres en due forme de la corporation. La personne présentée doit être d'accord avec sa nomination. Les nominations doivent être reçues par le bureau national ou par le Président au plus tard le 7 janvier, 2005. Toutes les nominations seront envoyées au comité de nomination qui établira une liste de candidat(e)s pour assurer une représentation nationale basée sur le ratio des membres. »

La liste des candidat(e)s proposé(e)s sera publiée dans *Le philatéliste canadien* de mars-avril 2005. On y inclura une courte bibliographie de chaque candidat(e).

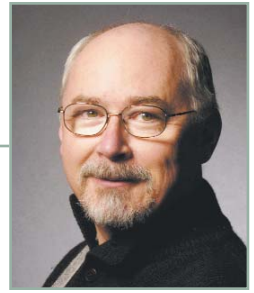
ADVERTISING DEADLINE

for the next issue of *The Canadian Philatelist* is January 3, 2005

LA DATE LIMITE

pour soumettre votre publicité pour
Le Philatéliste canadien est le 3 janvier, 2005

Jim Szeplaki, 103 Lakeshore Rd., Suite 202, St. Catharines, ON L2N 2T6
(905) 646-7744 ext. 223 • fax (905) 646-0995 • jims@trajan.ca



I write a stamp column in *The Ottawa Citizen* every two weeks, every 30 days for *Scott Stamp Monthly* and the President's Page for this magazine every two months. From time to time, I write in-depth or light articles for various publications. There comes a time when I don't know what to write about and this is one of them. So I think I'll write about how you can support The RPSC by writing articles for the magazine.

I am sure that our Editor, Tony Shaman, would like to receive more articles and writings for his story cupboard. As you can see by previous issues, there is somewhat of a balance between erudite articles and those with a more human story. You don't need to be a professional writer to see your writings published in our magazine. For example, if it is interesting, if it is a new discovery of a new cancel or stamp variety, or if it is a report of the activities of your club, then write about it and send it along. The Editor is there to help you if you feel the need for advice on how to go about it. Contact him.

We are a generalist society. Our members are interested in many varied aspects of the hobby and they probably collect most countries in the world. Therefore, articles on Canadian or BNA material are accepted, but so is material on any other country or type of collecting such as aerophilately, thematics and don't forget the new divisions: illustrated mail, cinderellas and display class. Also don't forget that our hobby is a visual one. Illustrations and photographs are important. They add not only to the appreciation of your writings but they reduce the total number of words you need to write.

I urge you to send in a contribution to the Editor in either English or French. Make it your New Year's resolution. ♣

J'écris une chronique philatélique dans *l'Ottawa Citizen* toutes les deux semaines, tous les trente jours pour *Scott Stamp Monthly* et tous les deux mois la Page du Président pour cette revue. De temps en temps j'écris des articles de ton académique ou léger pour plusieurs publications. Parfois, je n'ai aucune idée du sujet quand vient le temps d'écrire et cette fois-ci je suis dans une telle position. Alors j'écrirai sur une façon pour vous de montrer votre support pour La SRPC. Écrivez des articles pour notre magazine.

Je suis assuré que notre rédacteur-en-chef, Tony Shaman, prendra grand plaisir à recevoir de nouveaux articles et écrits pour son placard. Si vous feuillotez des copies antérieures du magazine vous voyez qu'il essaie de faire un équilibre entre les articles académiques et ceux qui décrivent un aspect plus terre à terre de la philatélie. Il n'est pas nécessaire d'être écrivain professionnel pour voir vos écrits publiés dans notre magazine. Par exemple, si c'est un sujet intéressant; si c'est une nouvelle découverte d'une oblitération ou d'une variété; ou si c'est un rapport des activités de votre club ou de votre région; écrivez un article et acheminez-le vers Tony. Le rédacteur-en-chef est là pour vous aider si vous pensez avoir besoin d'aide ou de conseils sur la façon de procéder.

Nous sommes une société de généralistes. Nos membres sont intéressés dans toutes sortes d'aspects variés de notre passe-temps et il collectionne presque tous les pays du monde. En conséquence nous acceptons naturellement des articles sur le Canada et l'ANB mais aussi des écrits sur tous les pays, les types de collections tels que l'aérophilatélie, la thématique et n'oubliez pas les nouvelles divisions: la poste illustrée, la paraphilatélie et la classe ouverte. Il est aussi important de ne pas oublier que notre passe-temps est visuel. L'importance des illustrations et des photographies n'est pas à redire. Elles ajoutent énormément à l'appréciation de vos écrits et elles réduisent le nombre total de mots que vous devez écrire.

Je vous enjoins d'envoyer votre contribution au rédacteur-en-chef en français ou en anglais. Faites-le votre résolution du Nouvel An. ♣

MEMBERSHIP Report Rappports de MEMBRES

NEW MEMBERS / NOUVEAUX MEMBRES

The following applications were received and are herewith published in accordance with the Constitution. If no adverse reports are received within 30 days of publication, applicants will be accepted into full membership. Any objections should be sent to the National Office, P.O. Box 929, Station Q, Toronto, ON M4T 2P1.

Les demandes d'adhésion ci-dessous ont été reçues et sont publiées en conformité avec la constitution. Si aucun commentaire n'est communiqué au Bureau national, (C.P. 929, Succursale Q, Toronto, ON, M4T 2P1) d'ici 30 jours, les adhérents seront acceptés comme membres.

(M) minor - activity guaranteed by parent or guardian / mineur - activités philatéliques garanties par un parent ou un tuteur.

INDIVIDUAL / INDIVIDUEL

- I-28243 Butch Fox, Fort McMurray, AB
I-28244 Andrew Hill
• INTERESTS: Canada #1 to present mint & used-US 19th Cent Postal hist.
- I-28245 Warren Braley
I-28246 Sheridan Atkinson
• INTERESTS: Canada, Malta, Turks & Caicos, Hong kong
- I-28247 Kathleen Ralph
• INTERESTS: Canada & Newfoundland
- I-28249 John Glenn
I-28250 Kristen Dietzen
I-28251 Peter Zavodny
• INTERESTS: Canada, USA, Europe stamps, covers, post cards / old /
- I-28253 Mike Powley
• INTERESTS: Canada & USA and some UK issues

I-28254 Ronald Schurman

I-28255 Robert Gauthier

- INTERESTS: France, Germany, Canada, Poland, England -all

I-28257 John Smith

- INTERESTS: world

I-28258 Henry W. Hobbs

- INTERESTS: world wide

I-28259 Marc Blais

I-28260 Alyn Lunt

SUBSCRIPTION / ABONNEMENT

S-28252 Sharon Penny

- INTERESTS: all countries, USA and Britain, used Canadian collection

S-28256 Acquisitions Wisconsin Historical Society

DECEASED MEMBERS / MEMBRES DÉCÉDÉS

- Bastien, Robert (I-13791), Beloeil, QC • Black, C. F. (I-6665), Charlottetown, PE • Sanders, John C. (I-27974), Wawa, ON

Give the Gift of RPSC Membership for only \$35* this Holiday Season

- **The Canadian Philatelist** - Six issues of this award winning magazine (cover price - \$5 per issue).
- **Sales Circuit** - Useful way of disposing of surplus material and acquiring material for your collection.
- **Chapters** - Network of local Clubs across Canada. A great way to meet other collectors in your area.
- **Stamp Insurance** - Preferential group insurance premiums can save you over 30%!
- **And more!** - Benefits such as your own listing on The RPSC Web site (www.rpsc.org) and more!

* includes a one-time \$5 administration fee for new members



Donnez un adhésion-cadeau à La SRPC pour seulement 35\$* cette saison

- **Le Philatéliste canadien** - Six numéros du magazine, médaillé au niveau international (prix au numéro - 5 \$).
- **Carnet de timbres en approbation** - Disposez de votre matériel en surplus ou acquérez des nouvelles pièces.
- **Chapitres** - Des clubs locaux au Canada où les membres de La SRPC reçoivent un accueil chaleureux.
- **Assurance philatélique** - Vous pourrez économiser plus de 30% sur votre prime d'assurances de groupe!
- **Et d'autres avantages!** - Tel que votre courriel sur le site web de La SRPC (www.rpsc.org).

* inclut les frais d'administration de 5\$ pour les demandes initiales

Yes! I would like to take advantage of this special offer. Please send a one-year gift membership in The Royal Philatelic Society of Canada to the individual named below. ** I have included payment of \$35 (payable in Canadian Funds if resident in Canada; otherwise payable in U.S. Funds or Canadian equivalent).

Oui! Je voudrais profiter de cette offre spéciale. Veuillez envoyer une adhésion-cadeau d'une année comme membre de La Société royale de philatélie du Canada à l'individu nommé ci-dessous. ** Vous trouverez ci-joint le paiement de 35\$ (payable en devises canadiennes si résident au Canada. Autrement en devises américaines ou l'équivalent canadien.)

Name of Recipient / Nom de destinataire : _____

Address / Adresse: _____

City / Ville : _____ Prov : _____

Postal Code / Code postal : _____ Country / Pays : _____

Phone / Tel : (____) _____

E-mail / Courriel : _____

Name of Gift Giver / Nom de donateur : _____

PAYMENT / Mode de paiement

Cheque / Chèque joint *

Credit Card / Carte de crédit - VISA only / seulement

Card # / N° de carte: _____

Expiry / Date d'exp: _____

Signature: _____

RPSC # / N° de membre : _____

THE ROYAL
PHILATELIC
SOCIETY
OF CANADA



LA SOCIÉTÉ
ROYALE DE
PHILATÉLIE
DU CANADA

P.O. Box / C.P. 929, Station / Succ. Q
Toronto, ON M4T 2P1 CANADA

Tel / Tél: (416) 979-8874 Fax / Télcpr: (416) 979-1144

E-mail / Courriel : info@rpsc.org Web site / Site web : www.rpsc.org

LT. COL FREDERICK C.H. BLACK, FRPSC: 1907-2004

Fred was born in Pugwash, Nova Scotia and moved to Charlottetown at age 3. His father was a merchant with a storefront on "sunnyside", the south side of Grafton St. just opposite Queen Square where Confederation Centre sits today. His mother was a direct descendant of the Chappell family who served as postmasters in the city over three generations between 1802 and 1842.

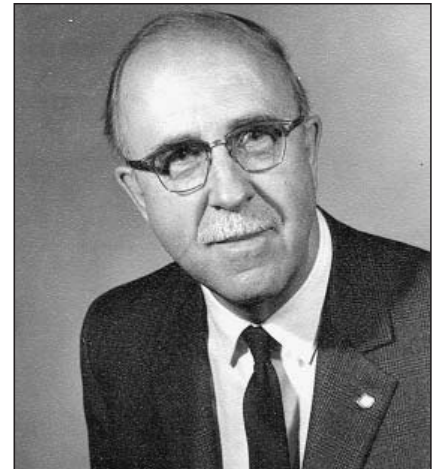
Fred graduated from Prince of Wales College in Charlottetown and Mount Allison University with honours in mathematics in 1930. After graduation he joined the Mutual Life Assurance Co. in Kitchener-Waterloo in an actuarial specialty.

In 1940 Fred joined the Canadian military in Guelph, ON and was accepted for officer's training. He was overseas, attached to headquarters staff in London and on the continent. He left the service in 1946 and became the Superintendent of Insurance in the Department of Veterans Affairs

and later Secretary for all of Canada. In 1969 he was appointed Attaché for Veteran's Affairs to the High Commission in London, a post which administered to 10,000 Canadian veterans in the British Isles. He retired in 1973 and was well-respected for policy decisions implemented under his tenure for the benefit of veterans, many of which remain in place today.

In the latter days of the war he was in Belfast where he met his future wife Kathleen McDowell. They were married in St. Catharines, ON in 1949 and had two sons, Alfred and Roderick. Fred and Kathleen have lived in Charlottetown since retirement.

Fred's collecting specialties included foreign stamps with Canadian content and worldwide stamps featuring errors of design. Both collections now belong to the National Archives of Canada. Fred also collected and documented family genealogy cover-



ing a rich heritage. It included Bishop Black, the father of Methodism in the Maritime Provinces, and on his mother's side, descendants of the Chief of the Clan MacLeod who were participants in both the American Revolution and Civil War. In talking to Kathleen one quickly gets a sense of a life rich in experiences and stories from both sides of the Atlantic of a talented and fascinating family.

Douglas Murray

RPSC News

EXCHANGES / DEMANDES D'ÉCHANGE

Dear Sir,

I am from Leipzig, Germany seeking a friend with whom to exchange stamps. Please publish my request in your magazine. The exchange: German for Canadian stamps. Many thanks. With philatelic regards.

Hilmar Goldschmidt

Gaußstr. 26

D-04179 LEIPZIG

e-mail: hilmar.goldschmidt@freenet.de

GUSTAVE SNELS, FRPSC: 1930-2004

Gus Snels had a fierce moustache, acquired during his military service in his native Belgium, and a disarming smile; a voice that exuded authority and a twinkle in his eye. He was a devoted family man and a trusted friend – an individual that people wanted to know.

On Tuesday, August 31st, 2004, as he did every day for the last 30-plus years, Gus made his way by rail from his home in Acton to Toronto where he had his office with a subsidiary of an international gas pipeline company. Gus could have retired years earlier from his engineering duties but he insisted on staying on as a consultant for the company. He was a tough taskmaster but was toughest on himself.

In retrospective, his insistence on remaining productive likely kept him alive longer than might have been the case had he retired from the workforce. Despite his robust appearance, Gus had not been well for over 20 years – something known only to his family and closest friends. Afflicted with osteoporosis, Gus broke his leg at work while trying to get up from his chair. During a medical examination at the hospital doctors determined that, in addition to his broken leg, he also suffered from a gradual failure of his internal organs. He passed away on September 19, 2004. A jazz aficionado, Gus's last wish was to be given a New Orleans-style funeral, musicians and all. Gus Snels left this world as he had lived, with panache!

Gus Snels was a member of The Royal Philatelic Society of Canada, Philatelic Specialists Society of Canada, and the Harmony Stamp Club. He was Harmony's Exhibition Chairman when in 1971 he was approached to consider holding a joint exhibition with the Canadian Association for Israel Philately and, simultaneously, host the conventions of The Royal Philatelic Society of Canada and the Society of Israel Philatelists. To garner the widest possible support for the venture, seven other Toronto-area clubs cooperated in staging the event. Thus was born STAMPEX with its first exhibition staged in 1973. This was the first time in the history of organized philately in Canada that several clubs cooperated in such a joint venture.



STAMPEX continued to flourish with Gus Snels as its Co-Chairman and Technical Director. Requests to assist at exhibitions in smaller centres continued to be received which ultimately culminated with a request to stage the 1978 World Stamp Exhibition in Toronto. The success of STAMPEX continued until 1984 when the reigns were turned over to the Toronto Association for Philatelic Exhibition. STAMPEX, with Gus still in the technical chair, was responsible for the 1982 International Youth Exhibition in Toronto and in Montreal in 1992. World Stamp Exhibition staged in Toronto under the STAMPEX direction, besides 1978, were CAPEX '87 and CAPEX '96. National Exhibitions staged with the assistance of STAMPEX were Quebec City and the 1993 convention of the British North America Philatelic Society in Toronto.

STAMPEX is a monument to the dedicated work of several philatelists but it could not have happened without the technical talents of Gus Snels. Goodbye Friend. ✦

Michael Madesker

P.S. Michael Madesker, Gus Snels, and the late Manfred Walther were the "triumvirate" that put STAMPEX Canada on the philatelic map of the world.

SELL QUALITY SELLS

ROYAL PHILATELIC SOCIETY OF CANADA SALES CIRCUITS

Most Requested Sales Circuit Books:

Canada, all periods- especially early, mint & used, fancy cancels, BOB, recent used, precancels, souvenir sheets, postal stationery

Provinces; all, esp. harder to find material

British Commonwealth - British Africa,

Victoria- George VI especially, but all required Br. West Indies - all esp.

Bermuda, Caymans German States & Russia The "Saints" (Lucia, Helena Vincent, Kitts), Br. Guiana USA, all requested

COUNTRIES AVAILABLE

Australia	Malaysia
Belgium	Malta
Canada	New Zealand
China	Portugal
Europe	Rhodesia
France	Russia
Germany (West, East, States)	Scandinavia; Iceland, Greenland
Gibraltar	Turks and Caicos
Hong Kong	U.S.A.
Japan	
Leewards	
British Commonwealth (specify which part; Africa, BWI, Pacific etc)	

See us at the shows

Regina Stamp Club
Feb. 19-20, 2005
Seven Oaks

Edmonton Stamp Club
April 1-3, 2005
West Edmonton Mall

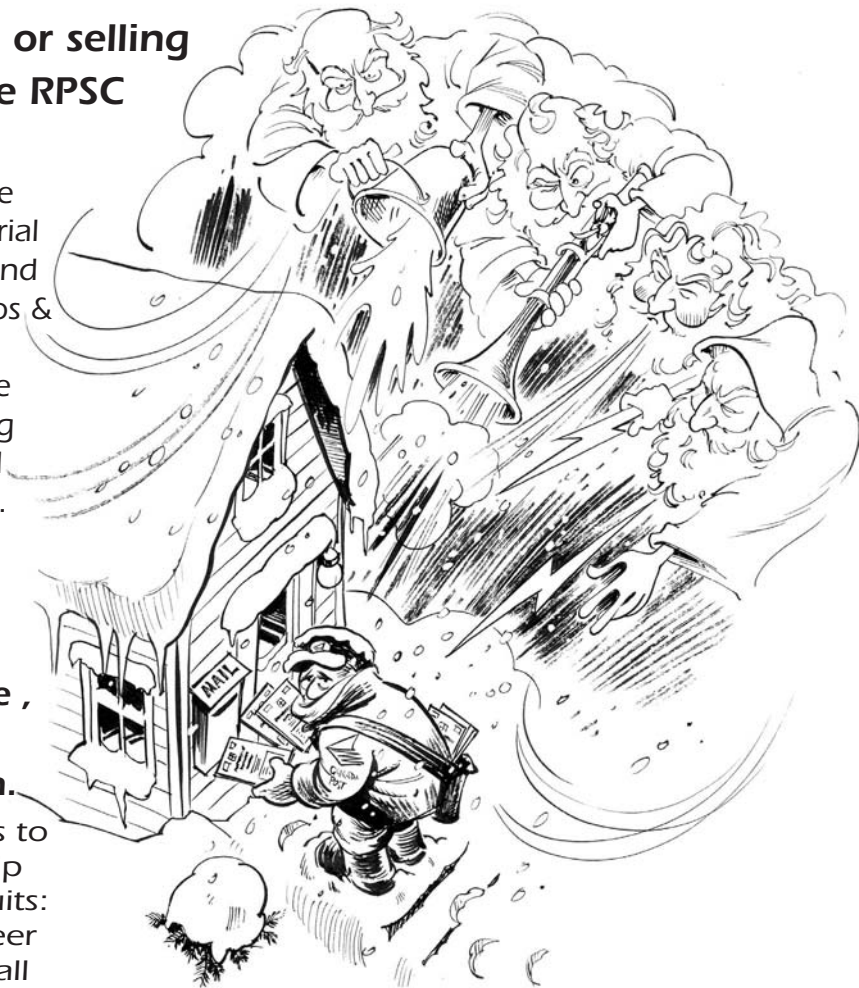
Beat Ol' Man Winter!

Try buying or selling through the RPSC Circuits!

We have a wide variety of material . . . from Thailand to Turkey, Caicos & Caymans to Canada. We are ALWAYS seeking quality material from the world.

I wish you a Happy New Year, Bonne Année, Fröhliche Weihnachten.

Special thanks to those that help with the Circuits: Office volunteer Marge Hunt, all the Chapter reps, cartoonist Peter Lynde, and Doug Sephton who creates these ads.



Shop at home

Let us bring the world to you.

Want to buy stamps at reasonable prices?

Write, phone, fax or e-mail today, for a complete information package on how to buy or how to sell through the **RPSC Sales Circuits**. RPSC members only

Independently owned and operated by: R. Dwayne **Miner**, Owner, and **Sandra E. Foss**, Circuit manager

Box 1109
Cochrane, AB T4C 1B2
Canada

Phone: (403) 932-2947
Fax: (403) 932-2947
E-mail: rpscsale@telus.net



COMING EVENTS / CALENDRIER

To have your event listed in this section of The Canadian Philatelist, please send all details to The RPSC National Office, P.O. Box 929, Station Q, Toronto, ON M4T 2P1. Details may be faxed to (416) 979-1144 or e-mail to info@rpsc.org. Information will not be accepted by telephone. THIS IS A FREE SERVICE OF THE RPSC.

Pour que votre événement soit listé dans cette section du Philatéliste canadien veuillez envoyer tous les détails au Bureau national de la SRPC, C.P. 929, Succ. 'Q', Toronto, ON M4T 2P1. Les détails peuvent être faxés au (416) 979-1144 ou par poste-électronique à info@rpsc.org. Aucune information ne sera acceptée par téléphone. CECI EST UN SERVICE GRATUIT DE LA SRPC.

REGIONAL EVENTS / ÉVÉNEMENTS RÉGIONAUX

Jan. 8, 2005: BRANTFORD STAMP SHOW, held at the Woodman Community Centre, 491 Grey St. at James Ave., Brantford. 10:00 a.m. to 4:00 p.m. 15 dealers, sales circuit, lunchroom, draws, competitive stamp exhibits. For information contact George Speers, 25-229 Lynden Rd., Brantford, ON N3T 5L8, e-mail: gspeers@worldchat.com, phone 519-759-6594

February 5, 2005: Bramalea Stamp Club presents their annual Show and Bourse, from 10am to 4:30pm at the Jim Archdekin Recreation Centre, 292 Conestoga Dr., Brampton, ON. FEATURING: 10 Dealers, Club Circuit Books, Table Auctions and Non-competitive Exhibits, Youth Table with Free Stamps for kids. Lots of free parking. For information see our website: www.tht.net/~stevem/ or contact: I. Nessel, PO Box 92531, Brampton, ON L6W 4R1, email: b62hkg@yahoo.ca.

Feb. 19, 2005: NIPEX 2005 Stamp Exhibition and Bourse is sponsored by the Niagara Philatelic Society will be held at Stamford Lions Club Hall, 3846 Postage Rd., Niagara Falls, Ontario. Hours are 10-5 on both days. Free admission. Further information from Ed Yonelinas email: stamps@canada.com

February 26, 2005: Apex 2005 Ajax Community Centre, H.M.S. Ajax Room, 75 Centennial Road, Ajax, Ontario. Saturday, 10:00 am to 4 pm. 19 Stamp Dealers. Plenty of free parking. further information davidw@netscape.ca.

Apr. 1-3, 2005: EDMONTON SPRING NATIONAL 2005; Conference Centre, Fantasyland Hotel, West Edmonton Mall, Edmonton, AB. Dealers (krs2@ualberta.ca), Exhibits (johnpowell@shaw.ca), General information (no.113@shaw.ca), or Christopher Miller (780)-436-4172, or mail to Edmonton Stamp Club, PO Box 399, Edmonton, AB T5J 2J6, or website: www.edmontonstampclub.com

April 1-3, 2005: LAKESHORE 2005. The Lakeshore Stamp Club's LAKESHORE 2005 annual exhibition will be held at the Sarto Desnoyers Community Center, 1335, Lakeshore Drive, Dorval, QC. Free admission and ample free parking. Snack bar on premises. Door prizes draws. Competitive exhibition, many dealers, bourses, show cover and commemorative postmark. Hours: Friday and Saturday: 10 a.m. to 6 p.m.; Sunday 10 a.m. to 4 p.m. Information: François Brisse, P.O. Box 1, Pointe-Claire/Dorval, QC, H9R 4N5. Email: fbrisse@sympatico.ca / LAKESHORE 2005. L'exposition annuelle LAKESHORE 2005 du Club philatélique Lakeshore se tiendra du 1er au 3 avril 2005 au Centre communautaire Sarto Desnoyers, 1335, Promenade Lakeshore, Dorval, QC. Entrée gratuite et grand stationnement gratuit. Service de sandwichs et boissons. Tirage de prix de présence. Exposition compétitive, négociants, bourses, pli souvenir, oblitération commémorative. Horaire: vendredi et samedi: 10h00 à 18h00; dimanche: 10h00 à 16h00.

Information: François Brisse, C.P. 1, Pointe-Claire/Dorval, QC, H9R 4N5. Courriel: fbrisse@sympatico.ca

April 2, 2005: KAPEX 2005. 10 a.m.-5 p.m. Peterborough Christian Fellowship Centre, 300 Milroy Drive, Peterborough, Ontario (northeast corner of Chemong Road and Milroy Drive, just north of the Portage Place Plaza). If there are any other questions, please call Mr. Rick Stankiewicz, (705)295-6158 (KAPEX Co-ordinator) or stankiewiczr@nexicom.net.

April 2, 2005: Lonpex 113. 10:00 am to 5:00 pm. Stamp Bourse. 12 Dealers and Club sales circuit. Ramada Inn, 817 Exeter Road - just north of Hwy 401 and Wellington Road interchange - London, Ontario. Contact: Don Slaughter at donslau@execulink.com.

March 19, 2005: OXPEX 2005. (56th Annual Stamp Exhibition) and OTEX 2005 (25th Annual All Ontario Tropical Exhibition), both sponsored by the Oxford Philatelic Society (RPSC Chapter #65) will be held at John Knox Christian School, 800 Juliana Drive, (Hwys. 401 & 59 North), Woodstock, Ontario. Featuring: Competitive Exhibits, Judges Critiques, 16 Dealers, Youth Area, a Canada Post Counter, Giant Prize Draws, Annual Show Cover, Snack Booth & Refreshments, Free Admission and Parking. Hours: 9:30 a.m. to 4:30 p.m. For further information contact: Jim Watson, Show Chairman 2005, Box 20113, Woodstock, Ontario, N4S 8X8.

May 6-7, 2006: ORAPEX, Ottawa. Details to follow at a later date.

May 5-6, 2007: ORAPEX, Ottawa. Details to follow at a later date.

NATIONAL EXHIBITIONS / EXPOSITIONS NATIONALES

April 8, 9, 10, 2005: Postage Stamp Marketplace hosted by the Canadian Stamp Dealers' Association at the Queen Elizabeth Building, Exhibition Place, Toronto, ON. Hours Friday 11 a.m. to 6 p.m.; Saturday 10 a.m. to 6 p.m.; Sunday 10 a.m. to 4 p.m. Free Admission, draw prizes, society and club information, and more. Further information email secretary@csdaonline.com

April 30-May 1, 2005: ORAPEX 2005. Ottawa's National Stamp Exhibition and Bourse, the 44th Annual Stamp Club Exhibition and Bourse will be held in the Curling Rink at the RA Centre, 2451 Riverside Drive, Ottawa, Ontario. Times: Saturday from 10 am to 6 pm, and Sunday from 10 am to 4 pm. For dealers' bourse data and exhibitors' entry forms, contact Major Dick Malott, CD, Retd, 16 Harwick Crescent, Nepean, Ontario K2H 6R1. Tel: (613) 829-0280; fax: (613) 829-7673; e-mail rmaalott@magma.ca. Admission and Parking are FREE.

May 27-29, 2005: ROYAL*2005*ROYALE. The Royal Philatelic Society of Canada's 77th Annual

convention and exhibition at the London Convention Centre, 300 York St., London, ON. Hours Friday 10 a.m. to 5 p.m., Saturday 10 a.m. to 5 p.m., and Sunday 10 a.m. to 4 p.m. Further information at www.rpsc.org and click ROYAL*2005*ROYALE or email: royal2005@rogers.com. Dates and locations for upcoming years:

2006, Calgary, Alberta, September 29 - October 1
2007, Toronto, Ontario.
2008, Québec City, Québec.
2009, St. Catharines, Ontario.
2010, Available/disponible.
2011, Montréal, Québec.

July 2005: New Zealand 2005 National Stamp Show - North Shore City, New Zealand.

Nov. 17-20, 2005: New Zealand 2005 National Stamp Show, Auckland, New Zealand. Canadian Commissioner: John Keenlyside, 622-470 Granville St., Vancouver, BC V6C 1V5.

Sept. 2-4, 2005: BNAPEX 2005, the annual convention and exhibition of the British North America Philatelic Society, Fantasyland Hotel, Edmonton, AB. Members' exhibits; study group seminars; local tours; spousal activities, awards banquet; dealers' bourse etc. Contact: BNAPEX 2005, David Piercy, c/o Edmonton Stamp Club, Box 399, Edmonton, AB T5J 2J6; david.piercey@epsb.ca; (780) 437-2771 or view the Society's website: www.bnaps.org

Nov. 2-5, 2006: KIWIPEX 2006 - Christchurch, New Zealand.

INTERNATIONAL EXHIBITIONS / EXPOSITIONS INTERNATIONALES

April 21-24, 2005: Pacific Explorer 2005 World Stamp Expo, Sydney, Australia. Canadian Commissioner: Charles J.G. Verge, P.O. Box 2788, Station "D", Ottawa, ON K1P 5W8. Tel.: (613) 738-2770; Fax: (613) 738-7863; e-mail: verge@sympatico.ca. Deadline for entries is July 31, 2004.

May 27 - June 3, 2006: World Philatelic Exhibition under the FIP auspices WASHINGTON 2006. Bulletin # 1 and Entry Form available now (deadline for entries June 1, 2005) Qualifications for exhibits: vermeil at national level, Youth - silver-bronze, One Frame - 80 points, Open Class - commissioner's statement confirming quality of exhibit. Entry fee: US \$55 per frame/entry. Youth Class - free of charge. Get in touch with your Commissioner today. Dr. John Powell, for Manitoba and West, 5828 143rd Street, Edmonton, Alberta T6H-4E8, tel: 780-435-7006, email: johnpowell@shaw.ca. Dr. JJ Danielski, for Ontario and East, 71 Gennela Square, Toronto, Ontario M1B-5M7, tel: 416-283-2047, email: jj.danielski@sympatico.ca

CHAPTER MEETINGS

AJAX PHILATELIC SOCIETY

RPSC Chapter 163 meets the 2nd and 4th Thurs, Sept. to June at the Ajax Public Library, 65 Harwood Ave. S., 6-9 p.m. Contact: Richard Weigand, 6 Carter Cr., Whitby, ON L1N 6C4. (905) 430-2637. E-mail: richard.weigand@sympatico.ca.

AMICALE DES PHILATÉLISTES DE L'OUTAOUAIS (APO)

Les membres de l'APO, chapitre 190 de la SRPC, se réunissent tous les jeudis de début septembre à fin avril, de 18h30 à 21h00. Les réunions ont lieu au Châlet Fontaine, 120 rue Charlevoix à Hull (Québec). Carte de membre 20 \$ (10\$ pour les moins de 16 ans). Vendeurs, encans, exposition.

Members of the APO (Chapter #190) meet every Thurs. from Sept. to the end of April, 6:30 to 9 p.m. in the Châlet Fontaine, 120 Charlevoix, Hull, Québec. Membership \$20 (\$10 under 16). Dealers, auctions, show and bourse. Contact: A. Bossard, 5-1160 Shillington, Ottawa, ON K1Z 7Z4; (613) 722-7279; e-mail: isabelle.alain@sympatico.ca

CLUB PHILATÉLIQUE "LES TIMBRÉS" DE BOISBRIAND

Section adulte: Tous les lundis soir de 19h. à 21h. Section junior: Tous les samedis de 9h. à 11h; au Centre socio-culturel de Boisbriand, 480 rue Chavigny, Boisbriand, QC, J7G 2J7; information: Louis-Georges Dumais (450) 979-7371; Jacques Charbonneau (450) 430-6460.

BARRIE DISTRICT STAMP CLUB

Chapter 73 meets the 2nd Wed. except July and Aug. at 7:30 pm at 101 Ardagh Road, Barrie, ON. Table auction at every meeting. Contact: Marjorie Coakwell, PO Box 2, Orrilia, ON L3V 6H9, (705) 323-9072.

BRAMALEA STAMP CLUB

RPSC Chapter 144 meets the 1st Sun. Oct. to June 2-4 p.m. and the 3rd Tues. year round 7:30-9:30 p.m. at Terry Miller Recreation Complex, Williams Parkway (between Dixie Rd. and Bramalea Rd.) Brampton, ON. Contact: Bramalea Stamp Club, Box 92531, Bramalea, ON L6W 4R1.

BRANTFORD STAMP CLUB

RPSC Chapter 1 meets on the 1st and 3rd Tues. Sept. to May, and the 1st Tues. in June, at the Woodman Community Centre, 491 Grey St. ON at 7 p.m., short business meeting at 8 p.m., followed by a program. Circuit books, five dealers. Contact: Secretary, Box 25003, 119 Colborne St. W., Brantford, ON N3T 6K5; (519) 753-9425

BRITISH COLUMBIA PHILATELIC SOCIETY

Meets every Wed., Sept. to June, at 7:30 p.m. in the Amenity Room, Grosvenor Building, 1040 W. Georgia St. Contact: B.C.P.S., 2955 West 38th Ave., Vancouver, BC V6N 2X2.

BROCK/PRESCOTT STAMP CLUB

Meets the 3rd Wed. Sept. to May at 7 p.m. at Wall Street United Church, 5 Wall St., Brockville, ON. Contact Roy Brooks at (613) 342-7569.

CALGARY PHILATELIC SOCIETY

(Chapter 66) Regular meeting: 1st Wed. except July and Aug., 7 p.m. Auctions on 3rd Wed. of month except Dec., 7:30 p.m. Kerby Centre, 1133 7 Ave. SW. Contact: Calgary Philatelic Society, PO Box 1478, Station M, Calgary, AB T2P 2L6.

CAMBRIDGE STAMP CLUB

Meets the 3rd Mon. Sept. to June at 7 p.m. Short meeting at 8 p.m. at Allen Bradley Cafeteria, Dundas Street, Cambridge, ON. Two dealers, club circuit. Contact: Charlie Hollett, (519) 740-6657, 3-10 Isherwood Ave., Cambridge, ON N1R 8L5.

CANADIAN AEROPHILATELIC SOCIETY

RPSC Chapter 187, yearly membership for Canadians \$20 Cdn, for Americans \$22 Cdn. and for all other countries \$25. No formal meetings, but members join the RA Stamp Club meetings at the RA Centre, 2451 Riverside Dr., Ottawa, ON at 7:30 p.m. every Mon. except June to Aug. Contact: Brian Wolfenden, 203A Woodfield Drive, Nepean ON K2G 4P2. (613) 226-2045.

CANADIAN ASSOCIATION FOR ISRAEL PHILATELY

Chapter 76, Jan Bart Judaica Study Group, meets on the 2nd Wed. except July and Aug., 7 p.m., at Lipa Green Bldg., 4600 Bathurst St., Willowdale, ON. Contact: Joseph Berkovits, 33-260 Adelaide St. E., Toronto, ON M5A 1N1. (416) 635-1749.

CANADIAN FORCES PHILATELIC SOCIETY

Meets the 1st and 3rd Wed. Sept. to May 8-9:30 p.m. Dempsey Community Centre, Ottawa, ON. Tom Barber (613) 736-9741.

CANADIAN FORCES BASE TRENTON STAMP CLUB

Chapter 89 meeting on the 1st and 3rd Wed. Sept. to June at the Trenton Seniors' Club (Club 105) at the corner of Bay and Campbell Streets at 6:45 p.m. Contact: G.A. Barsi at (613) 394-2024, M. Leedham at (613) 392-7462 or S. Taylor at (613) 393-4316.

COBOURG STAMP CLUB

Chapter 106 meets the 2nd and 4th Wed. of each month at 7 p.m. in the Salvation Army Citadel, 59 Ballantine St. Trading, speaking, competitions, presentations and annual exhibition and sale in Sept. Contact: Michael Hunt at (905) 885-7074 or e-mail dorahrh@eagle.ca.

COLBORNE STAMP CLUB

Chapter 205 meets on the 2nd and 4th Tues. Sept. to May at 7 p.m. in the Seniors' Drop-In, Vourneen "Buff" Jack Memorial Centre, 14 Victoria Square. Contact: Box 1073, Colborne, ON K0K 1S0.

COLLINGWOOD - GEORGIAN BAY COIN & STAMP CLUB

Chapter 168 meets on the 2nd Wednesday of the month at the Wasaga Beach Library, and on the 4th Tuesday of the month at the Collingwood Library. Meetings are from 7:00 p.m. to 9:00 p.m.

CREDIT VALLEY PHILATELIC SOCIETY - MISSISSAUGA

Chapter 67 of The RPSC meets on the 1st and 3rd Wed. at 7 p.m. in the Texaco Room of the Port Credit Branch of the Mississauga Library, located in the southwest corner of the public parking lot west of Stevebank and north of Lakeshore Road. Contact Bob Laker (905) 608-9794.

DELTA STAMP CLUB

Club meetings on the 2nd and 4th Tues. Sept. to May at 7:30 p.m. at the Beach Grove Elementary School, 5955 17A Ave., Tsawwassen, BC. Contact Keith Meyer, President, #7-1100-56th St. Delta, BC V4L 2N2.

EAST TORONTO STAMP CLUB

Chapter 12 meets the 1st and 3rd Wed., except June to Aug., at Stan Wadlow Clubhouse, Cedarvale Ave. Contact: Sec. Raymond Reakes, 188 Woodmount Ave., Toronto, ON M4C 3Z4. (416) 425-1545.

EDMONTON STAMP CLUB

Edmonton's Chapter 6 meetings held every other Mon., Sept. to June at 7 p.m., at St. Joseph High School cafeteria (use north entrance), 10830-109 St. Contact: Box 399, Edmonton, AB, T5J 2J6. Keith Spencer (780) 437-1787 or e-mail ameech@telusplanet.net.

ESSEX COUNTY STAMP CLUB

Chapter 154 meets on the 1st and 3rd Wednesday of the month (except no second meeting in July, August and December), at 7:00 p.m. at 5050 Howard Ave, Windsor, ON. Contact: David L. Newman, President, at 1165 Wigle Ave, Windsor, ON, N9C 3M9. Tel.: (519) 977-5967. E-mail: lacumo@cogeco.ca.

FENELON STAMP CLUB

The club meets on the second monday of each month at 7:30 p.m. at Fenelon Falls Baptist Church on Colbourne Street in Fenelon Falls. For more information, contact President, Harry Pearson, at 5 Heritage Way - Unit 5, Lindsay, ON, K9V 5Y6.

FRASER VALLEY PHILATELIC CLUB

Meets at 7 p.m. on the 3rd Monday, except holidays, at Abbotsford Senior Secondary School, 2329 Crescent Way. Contact N. Holden at (604) 859-9103.

FREDERICTON DISTRICT STAMP CLUB

Chapter 148 meets the 1st and 3rd Tues, Sept. to May at 7:30 p.m. at the Hugh John Fleming Forestry Centre, 1350 Regent St. Contact Ron Smith, 12 Chateau Dr., McLeod Hill, NB, E3A 5X2, (506) 453-1792, e-mail: rugbyron@nb.sympatico.ca

FUNDY STAMP COLLECTOR'S CLUB

Meets the 1st Thurs., except July and Aug., at 7 p.m. at the YMCA on Highfield St. Contact H.C. Terris at (506) 856-8513 or PO Box 302, Moncton, NB E1C 8L4.

GREATER VICTORIA PHILATELIC SOCIETY

Chapter 32 meets on the 3rd Fri. at 7:30 p.m. at the Windsor Park Pavilion in Oak Bay. Circuit books, auction and special programs prevail. Contact Don Dundee, 928 Claremont Ave., Victoria, BC V8Y 1K3, (604) 658-8458.

HAMILTON STAMP CLUB

Chapter 51 meets at 6 p.m. on the 2nd, 4th and 5th Mon., Sept. to June except holidays, and 2nd Mon. of July, at Bishop Ryan secondary school, Quigley Rd. and Albright St. Contact: Clare Maitland (Secretary), Box 60510, 673 Upper James St., Hamilton, ON, L9C 7N7; e-mail: stamps@hwcnc.org or online at: www.hwcnc.org/~ip029

INSURANCE AND BANKING PHILATELIC SOCIETY OF GREAT BRITAIN - CANADIAN BRANCH

Chapter 82 meets on the 3rd Thursday of the month (except July, August and December) at 5:30 p.m. Location: 320 Bay Street (southwest corner of Bay St and Adelaide St), 13th floor, Toronto, ON, M5H 4A6. These are the premises of Canaccord Capital Corporation. Contact: Don Peach, Secretary of the I&BPSGB/CB, 83 Nymark Avenue, Toronto, ON M2J 2H1.

KAWARTHA PHILATELIC SOCIETY

Chapter 58 meets on the 2nd and 4th Tues. except July and Aug., at 7 p.m. at Christ Lutheran Church, 463 Highland Rd. Peterborough, ON K9H 5J8. Contact: Box 2222, Peterborough, ON K9J 2T0.

KELOWNA & DISTRICT STAMP CLUB

Chapter 90 meets on the 1st Wed. Sept. to June at 7 p.m. at the Odd Fellows Hall, 2597 Richter St., Kelowna, BC. Contact: Box 1185, Kelowna, BC V1Y 7P8.

KENT COUNTY STAMP CLUB

Chapter 7 meets 4th Wed. except July, Aug. and Dec. in the library of John McGregor Secondary School, 300 Cecile, Chatham, ON, at 7:30 p.m. Contact: Secretary, Allan Burk, 43 Sudbury Dr., Chatham, ON N7L 2K1.

KINCARDINE STAMP CLUB

Chapter C-196 meets the 1st Wed. in the back of the Anglican Church on Russel St. at 7:30. Contact the club at Box 192, Kincardine, ON N2Z 2Y7 or call John Cortan at (519) 395-5819 or e-mail jrcortan@hurontel.on.ca

KINGSTON STAMP CLUB

Meets 7-9 p.m. on the 2nd and 4th Mon. Sept. to May at the Ongwanada Resource Centre, 191 Portsmouth Ave. Free parking and wheelchair access. Consignment table, auctions, bourse, OXFAM, and trading. Contact President Bob Chadwick, 31 Abbey Dawn Drive, Bath, ON K0H 1G0. Tel: (613) 352-1052.

KITCHENER-WATERLOO PHILATELIC SOCIETY

Chapter 13 meets the 2nd Thurs. Sept. to June at Albert McCormick Arena, Parkside Dr., Waterloo. Contact: James Oliver, P.O. Box 43007, Eastwood Square PO, Kitchener, ON N2H 6S9, (519) 893-4092.

LAKEHEAD STAMP CLUB

Chapter 33 meets the 2nd Wed. and last Fri. Sept. to June at the Herb Carroll Centre, 1100 Lincoln St., Thunder Bay, ON, at 7:30 p.m. Contact: Secretary D. Lein, 232 Dease St., Thunder Bay, ON P7C 2H8.

ONE last word

by / par Tony Shaman



RPSC News
Nouvelles SRPC

UN dernier mot

New Year's resolutions are more noteworthy for being broken than being kept but why not make this year's an exception? Resolve to do something that has a realistic chance of coming to fruition such as "selling" the many benefits of stamp collecting to members of your community.

One of the best things about being editor of a magazine is the readily available forum for dispensing opinions. That is not to say that readers pay attention to what editors have to say, let alone agree with them, but I hope that this once readers will consider the viewpoint that I am about to express.

Philately is not a corporate-driven enterprise such as General Motors, Ford, or your friendly insurance companies whose deep pockets can well afford to finance their slick advertising campaigns and publicity programmes to keep their names before the public. These highly successful organizations realize that their long-term survival depends on their ability to continue to expand their market share. We all suspect, and correctly so, that if corporations stop growing they will soon begin shrinking and become less of a force in the markets they serve.

The same, of course, holds true for not-for-profit organizations. And that includes organized philately right from the local club level to the national and international Societies such as The Royal and FIP - the International Federation of Philately.

As philatelists, we all have a vested interest in the well-being of our great hobby so it is up to each of us to take responsibility for its success. Nearly every philatelic publication at one time or another has made suggestions on what collectors can or must do for the good of the hobby. Some ideas are difficult to implement such as, for example, recruiting youngsters through the school system because educators are wary of "outsiders" getting involved in an area that they see as their exclusive turf. But there are other ways of publicizing the benefits of philately.

Plus personne ne se fait d'illusion sur les résolutions du Nouvel An, elles sont faites pour être oubliées et non tenues! Mais cette année, pourquoi ne pas renverser la situation? Prenez une résolution dont les chances de porter fruit sont réalistes, par exemple : « vendre » à votre entourage les nombreux bienfaits que procure la philatélie.

L'un des bons côtés de l'éditorial est d'offrir l'accès facile à une tribune. Cela n'oblige pas les lecteurs à prêter attention aux propos de l'éditorialiste ou encore moins à être d'accord avec lui. J'espère cependant que le point de vue que j'exprime aujourd'hui sera pris en considération.

La philatélie n'est pas une entreprise commerciale, telles General Electric, Ford ou votre sympathique compagnie d'assurances qui disposent d'un portefeuille bien garni pour orchestrer des campagnes et des programmes publicitaires brillants afin que le public ne les oublie pas. Ces entreprises très florissantes ont compris que leur survie à long terme dépend de leur capacité à continuer d'étendre leur part du marché. Nous nous doutons bien, et nous ne faisons pas erreur, que si une entreprise cesse de croître, elle commencera à décroître et sa puissance sur les marchés faiblira.

Il va de soi que le même principe s'applique aux organismes à but non lucratif. Ce qui inclut la philatélie à tous les niveaux : du club local aux sociétés nationales et internationales, telles La Royale et la FIP, la Fédération Internationale de Philatélie.

En tant que philatélistes, le bon état de notre superbe passe-temps nous concerne directement. Chacun d'entre nous doit donc tenir pour sienne la responsabilité du succès de la philatélie. Presque chaque publication philatélique a, à un moment ou à un autre, fait des suggestions sur ce que les collectionneurs pourraient ou devraient faire. Si certaines idées font difficilement leur chemin, par exemple, recruter des jeunes par le biais des réseaux scolaires où les éducateurs se méfient des « profanes » qui viennent jouer dans leurs plates-bandes, il y a toutefois d'autres moyens de faire notre publicité.

October Stamp Month is one such opportunity so why not piggy back on Canada Post's annual stamp collecting publicity blitz. The Crown corporation spends considerable funds extolling the virtues of stamp collecting. Why not take advantage of that opening? October is still far enough away to allow your organization to plan a constructive campaign to reach a new group of potential collectors. Your efforts will benefit everyone. Getting more people involved in our hobby is surely a win-win situation for everyone. Why not make this one of your New Year's resolutions?

To kick off the first issue for 2005 we are fortunate to have George Arfken share with us several scarce covers from Canada to Australia and New Zealand. These covers went by way of the Pacific, an unusual route in the early 1860s when the more usual mail route to that part of the world was via Great Britain.

Although we are a bilingual publication, we do not print very many articles exclusively in French, mainly because we do not receive many. But for the first issue of 2005 we are printing an article in French and hope that our French-speaking members will enjoy reading a piece in their mother tongue.

I suspect that readers enjoy learning a little more about fellow philatelists, especially the more colourful collectors of the past. Thanks to Michael Peach, we have them in spades in this issue. Perhaps this overview of a group of prominent Nova Scotia collectors, some of whom remain quite active in organized philately, will motivate members from other regions of the country to pen something about collectors they have known or shared some good times with in the pursuit of our hobby.

After an absence of some months, Peter Newroth returns with Part V of the Gold Coast Keyplate issues.

With a scheduled mailing date of December 11 for this issue, the article by Ken Lewis describing a 1901 Chinese cover enclosing a Christmas present is still timely. The gift for the French First Secretary's wife was enclosed in an unusual envelope that the author describes in his article entitled "The One and Only" on page 16.

It is our sincere hope that you will enjoy the variety of articles we have included for your reading pleasure in this, our first issue for 2005.

Happy New Year to everyone! 🍁

Le Mois de la philatélie, octobre, s'avère une excellente occasion de profiter du blitz publicitaire annuel de Postes Canada. La société d'État dépense des fonds considérables pour proclamer les vertus de la philatélie. Pourquoi ne pas saisir l'occasion qui s'offre à nous? Il y a encore assez de temps, d'ici octobre, pour permettre à chaque association de monter une campagne productive qui atteindra un nouveau groupe de collectionneurs potentiels. Vos efforts seront bénéfiques pour tous. Augmenter le nombre des personnes qui s'investissent dans notre passe-temps crée à coup sûr une situation où tous sont gagnants. Pourquoi ne pas en faire une de vos résolutions du Nouvel An.

Pour lancer le premier numéro de 2005, George Arfken nous donne la chance de voir quelques plis rares qui ont circulé du Canada vers l'Australie et la Nouvelle-Zélande. Ces derniers ont pris la route du Pacifique, un trajet inhabituel, au début des années 1860, alors que le courrier acheminé dans l'hémisphère austral passait normalement par la Grande-Bretagne.

Bien que notre périodique soit bilingue, nous ne publions pas beaucoup d'articles exclusivement en français, et ce, parce que nous n'en recevons pas beaucoup. Mais le premier numéro de 2005 offrira à nos membres francophones l'occasion de lire un article dans leur langue maternelle.

J'imagine que nos lecteurs aiment bien en apprendre davantage sur leurs compagnons philatélistes, surtout sur les personnages colorés d'autrefois. Grâce à Michael Peach, nous ferons connaissance avec nombre d'entre eux. Le portrait esquissé d'éminents philatélistes de Nouvelle-Écosse, dont certains sont toujours très actifs, incitera peut-être les membres d'autres régions du pays à nous parler de collectionneurs qu'ils ont connus ou avec qui ils ont passé de bons moments.

Après une absence de quelques mois, Peter Newroth nous revient avec la Partie V de son dossier sur les émissions de clichés de base de la Côte d'Or.

La date de dépôt pour le présent numéro ayant été le 11 décembre, la description de Ken Lewis d'un pli chinois comportant un cadeau de Noël est encore de circonstance. Le cadeau pour la femme du premier secrétaire français se trouvait dans une enveloppe particulière sur laquelle était écrit « Le seul et unique ». À lire en page 16.

Nous espérons sincèrement que la variété d'articles contenus dans ce numéro, le premier de l'année 2005, saura vous plaire.

Bonne année à tous! 🍁

CLASSIFIEDS / ANNONCES CLASSÉES

APPROVALS / APPROVATION

TIRED OF duplicates and disappointments? Try my WW mixture approvals! All different off paper stamps, some cataloging dollars each (minimal CTO) priced 10¢/15¢ apiece!! Pay for those selected, return remainder! Providing quality approvals for over 25 years! Ron Carmichael, #0024 Fingal ON, NOL 1K0 **v56no1**

EXCHANGE / ÉCHANGER

TWENTY-FIVE YEARS (since 1979) exchanging stamps of the world. For details C.J.'s Stamp Exchange, 1270 Touchette, Brossard, QC J4W 2N4 **v56no1**

FOR SALE / À VENDRE

AMERICAN first day covers artcraft 25¢ each, add \$2 postage. Bill Athan, P.O. Box 1 Rockland, Del. 19732 **v56no3**

CANADA NEW issue posters / brochures / PS14's / counter mats **FOR SALE**. 1935-current. Commadore@sympatico.ca. DG Jones, 184 Larkin Dr., Nepean, Ont. K2J 1H9 **v56no3**

REPRINT. Unannounced reprint (1998) Scott 1378, \$5 Victoria Library. Reprint changed original (1996) black cross hatching in windows from 38 degrees to 13 degrees. Reprint MNH single \$12, blank corner block \$60. W. Robertson, 16 Fieldgate Drive, Orangeville, ON L9W 4K8. **v56no1**

W/W ESTATE LIQUIDATION Email krash@junction.net request W/W list: singles sets packets or send want list Kevin Kienlein 3101-18 Ave. Vernon BC Canada V1T 1C6. **v56no3**

FOREIGN / ÉTRANGER

BRITISH COMMONWEALTH, Europe and worldwide. Free discount price list. Jack Bode, PO Box 328A Markham, ON L3P 3J8 **v57no3**

LOTS & COLLECTIONS / COLLECTIONS

ASK FOR FREE list with 1,000s of collections, lots, singles, sets, SSs, booklets, FDCs, oddball stuff from the world over!! Ron Carmichael, #0024 Fingal ON, NOL 1K0 **v56no1**

MAIL BID / OFFRE CORRESPONDANCE

BARGAINS, FREE catalog. Regular mail bid sales. Canada, British Commonwealth, US, W/W. Friendly, personal service. No GST! Order today! LBJR, Box 264, Nelson, BC V1L 5P9 **v56no3**

WIDEST CANADA, Australia, United States, Great Britain choices. FREE lists sent next day. We specialize, you fill the gaps. Robert Millman, 105-6655 Lynas Lane, Richmond, BC V7C 3K8. Phone (604) 241-1948, or fax (604) 594-4155. E-mail: rmillman@hotmail.com. **v56no4**

NEW ISSUES / ÉMISSIONS RÉCENTES

PHILIPPINES, Solomon Islands, Gibraltar New Issues. 12 1/2% commission plus postage, registration. L.K. Stodart, Box 38, Alaminos, Pangasinan, 2404, Philippines. **v56no4**

WANTED / RECHERCHÉ

HOH OHO or Eaton's Department store Santa letters or covers to youngsters. Any era. Buy/trade. P.O. Box 43103, Kitchener, ON N2H 6S9. Ph. 1-519-745-2973. **v56no2**

MACMILLAN 5TH ANNIVERSARY WWII patriotic covers wanted. Covers and/or information. 1-613-476-5153. Munro-Cape, RR#3, Picton, ON K0K 2T0 **v56no4**

ROYAL WILLIAM #204 on cover, single or mixed franking. No FDCs. Phone/fax (902) 678-7896. A. Kalkman, 157 Morris Cr., Kentville, NS B4N 3V8. **v56no3**

WANTED Brown's Nurseries P.O.(1897-1920) picture cards, cards, envelopes, stamps, precancelled stamps anything concerning Brown's Nurseries. P.O. Jan Fopma 's-Gravelandseweg 86 flat 32, 1217 EW Hilversum, the Netherlands, tel/fax 003135 6285023, e-mail jan.fopma@xs4all.nl **v56no2**

CLASSIFIEDS SELL
To place a classified advertisement,
check out page 49 in this issue.
LES ANNONCES CLASSÉES VENDENT
Pour placer une annonce
voir la page 49 de ce magazine.

63% OFF

...the Cover Price

Subscribe today

	My Cost*	Cover Price	Savings
<input type="checkbox"/> 3 YRS (78 ISSUES)	\$99.20	\$271.44	\$172.24
<input type="checkbox"/> 2 YRS (52 ISSUES)	\$67.40	\$180.96	\$113.56
<input type="checkbox"/> 1 YR (26 ISSUES)	\$38.50	\$90.48	\$51.98

Name _____

E-mail: _____

Address: _____

City: _____ Prov: _____

Postal Code: _____ Phone: _____

ATTENTION
PHONE ORDERS
CALL 1-800-408-0352

OR

SUBSCRIBE ONLINE!!
www.canadianstampnews.ca

PAYMENT ENCLOSED VISA OR MASTERCARD

Card#: _____

Exp.Date: _____ Signature: _____

Send Payment to:
 Canadian Stamp News
 PO Box 28103, Lakeport PO, 600 Ontario St.,
 St. Catharines, ON, L2N 7P8

Rates for U.S. are the same as Cdn prices
International rate for 1 year only is \$149.00
 *GST prices are included

NB, NS, NL - HST PRICES ARE AS FOLLOWS;
 3yrs - \$106.65 • 2yrs - \$72.45 • 1yr - \$41.40

please allow up to 4 weeks for delivery of your first issue

NEWS
 Canadian
 Stamp

This Symbol



is your assurance that the dealer displaying it has subscribed to a high standard of business principles and ethics. When you are buying or selling stamps, covers or postcards, you should look for dealers displaying this logo. We are the professional Association to which they belong.

The Canadian Stamp Dealers' Association

P.O. Box 1123, Adelaide Street P.O.
Toronto, ON M5C 2K5
www.csdonline.com

RPSC
PHILATELIC
RESEARCH
FOUNDATION



SRPC
FONDATION DE
RECHERCHE
PHILATÉLIQUE

An Introduction to Youth Philately

A 55 page monograph in colour teaches the fundamentals of philately for young collectors.

Originally written for FIP's Commission for Youth Philately by the Federation of Swiss Philatelic Societies in German/French. Now English editions have been prepared by Michael Madesker and produced by the RPSC Philatelic Research Foundation.

Excellent for teaching seminars at youth stamp clubs and as a reference manual for young collectors. Regular price is \$15 to cover publication and mailing costs. A special price of \$8 applies for young collectors (21 and under), or teachers and others running youth stamp clubs.

Purchase a copy from the
RPSC Philatelic Research Foundation

c/o Ted Nixon
255 Cortleigh Blvd.
Toronto, ON M5N 1P8

Enclose cash or cheque payable to:
RPSC Philatelic Research Foundation.

DEPARTMENTS and COMMITTEES / SERVICES et COMITÉS

Anti-Theft Committee / Comité anti-vol

Chairman/Président: F. Warren Dickson, 108 - 803 Yonge St., Willowdale, ON M2M 3V5
Quebec and Atlantic Provinces / Québec et provinces atlantiques: Richard Gratton, FRPSC, C.P. 202, Windsor, QC J1S 2L8
West / Ouest: Col. William G. Robinson, FRPSC, 301 - 2108 West 38th Ave., Vancouver, BC V6M 1R9

APS Liaison / Liaison avec l'APS

Ann Triggler, 4865 Spaulding Dr., Clarence, NY 14031, USA
atriggle@buffalo.edu

Canada Post Liaison / Liaison avec Postes Canada

Charles J.G. Verge, FRPSC, Box 2788, Stn. D, Ottawa, ON K1P 5W8
verge@sympatico.ca
Rick Penko, Box 1425, Winnipeg, MB R3C 2Z1
rpenko@shaw.ca

Chapter Liaison / Liaison avec les chapitres

George F. Pepall, 44 Bound Brook Ct., Kitchener, ON N2A 3L3
pepall@rogers.com

Complaints Committee / Comité des plaintes

Col. William G. Robinson, FRPSC, 301-2108 West 38th Ave., Vancouver, BC V6M 1R9

Conventions and Exhibitions / Conventions et expositions

Dr. J.G. McCleave, FRPSC, 186 Willingdon St., Fredericton, NB E3B 3A5
mccleave@nbnet.nb.ca

Dealer Liaison / Liaison avec les négociants en timbres-poste

R.F. Narbonne, PO Box 102, McDonalds Corners, Ontario K0G 1M0

FQP Liaison / Liaison avec la FQP

François Brisse, Beaconsfield, QC, fsbrisse@sympatico.ca

Historian / Historien

Charles J.G. Verge, FRPSC, Box 2788, Stn. D, Ottawa, ON K1P 5W8
verge@sympatico.ca

Insurance Plan / Plan d'assurances

Hugh Wood Canada Ltd., 201 - 4120 Yonge St.
Toronto, ON M2P 2B8

Judging Program / Programme des juges

Dr. John M. Powell, FRPSC, 5828 143rd Street, Edmonton, AB T6H 4E8
johnpowell@shaw.ca

Medals and Awards / Médailles et prix

Raymond Ireson, 86 Cartier, Roxboro, QC H8Y 1G8

National Office / Bureau national

Andrew D. Parr, Executive Director / Directeur exécutif
P.O. Box / C.P. 929, Station, Succ Q Toronto, ON M4T 2P1, CANADA
Tel/Tél: (416) 979-8874, 1-888-285-4143 Fax/Télécr: (416) 979-1144
info@rpsec.org www.rpsc.org

Public Relations / Relations publiques

Michael O. Nowlan, 514 Gardiner St., Oromocto, NB E2V 1G3
mgnowlan@nb.sympatico.ca

Sales Circuit / Carnets de timbres en approbation

Sandra Foss, Box 1109, Cochrane, AB T4C 1B2
rpsecsale@cadvision.com

Slide Program / Diapotheque

Elizabeth Soderer, FRPSC, 831 Tower Rd, Halifax, NS B3H 2Y1
soderer@ns.sympatico.ca

T.A.P.E. Executive Director / T.A.P.E. Directeur exécutif

Peter Butler, Toronto, ON pbutler@ilap.com

The Canadian Philatelist / Le philatéliste canadien

P.O. Box/C.P. 929, Station/Succ Q, Toronto, ON M4T 2P1
Editor / Rédacteur, Tony Shaman, FRPSC, PO Box 43103, Kitchener, ON N2H 6S9
shaman@smokesignal.net
Advertising: Jim Szeplaki (905) 646-7744 ext. 223, jims@trajan.ca

Website / Site internet

D. Robin Harris, rharris@adminware.ca

Youth Education / Éducation de la jeunesse

Yvan Latulippe, St. Joachim-de-Shefford, QC
yvan.latulippe@sympatico.ca

LIST OF ADVERTISERS / LISTE DES ANNONCEURS

45	BNAPS	17	Jeff Melski	63	RPSC Research Foundation
41	Brigham Auctions	40	Lighthouse	56	RPSC Sales Circuit
IFC	Canada Post	B/Cover	Maresch, R. & Son	8	Saskatoon
62	Canadian Stamp News	45	Postal History	43	Sheffield
43	Coates & Coates	21	Rousseau	7	Unitrade
12	CPS of Great Britain	41	ROYAL *2005* ROYALE	17	Vance Auctions
63	CSDA	53	RPSC Gift Subscription	15	Van Dam, E.S.J.
3	Eastern				
13	Greenwood				



Celebrating over 75 years in the stamp business

As Canada's Premier Auction house we always have something new and interesting

When selling your collection our auctions will maximize your results

Please call or write us for a complimentary catalogue

r. maresch & son

DEALERS IN FINE STAMPS SINCE 1924

5TH FLOOR, 6075 YONGE ST., TORONTO, ON M2M 3W2 CANADA
☎ (416) 363-7777 www.maresch.com FAX (416) 363-6511