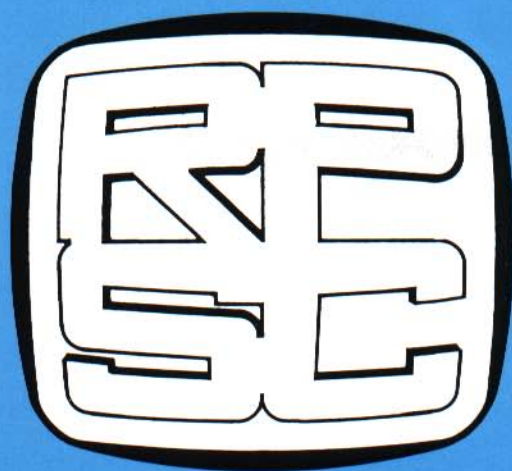


# CANADIAN PHILATELIST



Journal of the  
ROYAL PHILATELIC SOCIETY of CANADA

VOLUME 40

JAN.-FEB., 1989

NUMBER 1

It's less than  
.150 mm thick,  
yet contains  
fascinating  
stories on  
topics from  
animals  
to art.



Given that you already possess more than a passing acquaintance with the subject, it should come as no surprise to learn that what we're alluding to here is a stamp.

What you may not be aware of, however, is that this particular stamp is part of a larger, much sought-after collection that's now available from Canada Post Corporation.

## The 1988 Annual Souvenir Collection

In this year's **Annual Souvenir Collection**, you will find 52 different mint-condition stamps from the nineteen 1988 commemorative and definitive issues. These stamps are drawn from a variety of topics as diverse as Butterflies, Art, Science and Technology, the Captain of the *Bluenose* and the Calgary Olympic Winter Games. This full colour book, with 48 lavishly illustrated pages, makes a perfect gift and tells the whole story behind every stamp. It's a book that anyone with an interest

in stamps will never want to be without.

The **Annual Souvenir Collection** is available in soft-cover, with a presentation box for only \$23.95; or in a Deluxe hard-cover edition, with slipcase for only \$33.95. Either way your **1988 Annual Souvenir Collection** will be a fascinating and valued addition to your stamp and book collections.

Order your **1988 Annual Souvenir Collection** today (available as of late November 1988) and enjoy a truly Canadian keepsake that you'll treasure for years to come. Your **1988 Annual Souvenir Collection** is available at Philatelic Centres and selected post offices across Canada or by writing to the National Philatelic Centre, Antigonish, Nova Scotia, Canada B2G 2R8.

Payment for orders by mail may be made by cheque or money order payable

to Canada Post Corporation

or by charging to your **VISA** or **MASTERCARD**.  
**Don't miss out.**  
**Order today!**



CANADA POST CORPORATION



# THE CANADIAN PHILATELIST

JOURNAL of the ROYAL PHILATELIC SOCIETY of CANADA

Publication Date: Jan. 15, 1989

Volume 40, No. 1

Whole No. 230

January-February, 1989

## ARTICLES

CANADIAN STAMP PRICE RECORD SET AT FIRBY SALE .....	11
THE GOLDEN SCROLL .....	20
CANADA'S 15¢ LARGE QUEEN AND ITS POSTAL USAGES - George B. Arfken .....	24
COLONIAL PORTION OF CANADA - G.B. MAIL RATES - Allan Steinhart .....	34
WOMEN ON STAMPS: A COLLECTING OUTLINE - Betty Killingbeck .....	43
PRAGA '88: SYSTEM OF MARKING HURTS SOME - Andrew Cronin .....	52
RULES FOR THEMATICS/REGLES POUR THEMATIQUES .....	55
STAMP LAUNCH CEREMONY AT ROYAL '88 .....	80

## REGULAR FEATURES

EDITOR'S NOTES - Jim Haskett .....	5
LETTERS TO THE EDITOR .....	13
COMING EVENTS .....	16
EXCHANGES WANTED .....	18
PRESIDENT'S PAGE - James E. Kraemer .....	19
FELLOWS OF THE SOCIETY - Colin H. Bayley, M.B.E. - Beverlie Clark .....	22
THE RPSC JUNIOR STAMP COLLECTOR - Art Holmes .....	60
POSTMARKED OTTAWA - Hans Reiche .....	64
LITERATURE REVIEWS .....	66
SOCIETY REPORTS .....	69
RPSC FINANCIAL STATEMENTS .....	72
SALES DEPARTMENT - Margaret Allen .....	75
CHAPTER MEETINGS .....	76
CLASSIFIED .....	78

### EDITOR

JIM HASKETT  
23 Seneca Place, W.  
Lethbridge, Alberta T1K 4M7

### THE ROYAL PHILATELIC SOCIETY OF CANADA

P.O. Box 5320, Station F  
Ottawa, Ontario  
K2C 3J1

### ADVERTISING MANAGER

PAUL M. BUREGA  
P.O. Box 15765, Station F  
Ottawa, Ontario K2C 3S7

Published bimonthly by Philaprint Inc., P.O. Box 100, First Canadian Place, Toronto Ontario M5X 1B2 and printed by Port Perry Printing Ltd., Port Perry, Ontario. Recommended by the Royal Philatelic Society of Canada.

© by Philaprint Inc., 1989.

Opinions expressed herein are those of individual authors only and neither the Publisher nor the Royal Philatelic Society of Canada accepts responsibility for them.

MANUSCRIPTS should be typewritten double-spaced on one side of sheet. Only original articles will be considered. BOOKS AND LITERATURE for review should be addressed to the Editor, The Canadian Philatelist, 23 Seneca Place, W, Lethbridge, AB. T1K 4M7. None of the Editor, the Society, the publisher nor any officer or director of either incurs any liability for any article or manuscript, or any item accompanying such article or manuscript for photography, all of which are at the sole risk of the person submitting same.

Indexed in the Canadian Magazine Index and available on-line in the Canadian Business & Current Affairs Database.

ADVERTISING correspondence and copy should be addressed to the Advertising Manager. Special Low rates available to Chapters. The Publisher reserves the right to decline any advertising and acceptance does not imply endorsement of the product or service.

Subscription Price for members of the Royal Philatelic Society of Canada: \$10.00 per year. This amount is included in membership fees and the member automatically receives the journal. Non-members: \$20.00 per year. Change of address notices, undeliverable copies and orders for subscriptions are to be sent to P.O. Box 5320, Station F, Ottawa, Ontario K2C 3J1. Return Postage Guaranteed.

Second Class Mail Registration No. 6679.

# THE ROYAL PHILATELIC SOCIETY of CANADA

1988-1989

## Patron

Her Excellency The Right Honourable Jeanne Sauv , P.C., C.C., C.M.M., C.D.,  
Governor General of Canada

## EXECUTIVE

### President

Mr. James E. Kraemer  
17 Commanche Drive  
Nepean, Ontario K2E 6E8

### 1st Vice-President

Michael Madesker  
157 Clifton Ave.  
Downsview, Ontario M3H 4L6

### 2nd Vice-President

William G. Robinson  
5830 Cartier St.  
Vancouver, B.C. V6M 3A7

### Treasurer

David Dixon  
P.O. Box 1082  
Oakville, Ontario L6J 5E9

### National Office

P.O. Box 5320  
Station F  
Ottawa, Ontario K2C 3J1  
Executive Director: James Kraemer  
Office Manager: Hendrik (Henk) Burgers

## DIRECTORS

(Year term expires indicated in brackets  
following name)

Lt. Col. C. Fred Black (1990)  
30 Charlotte Drive  
Charlottetown, P.E.I. C1A 2N5

Mrs. S.A. (Beverlie) Clark (1990)  
924 North Drive  
Winnipeg, Manitoba R3T 0A8

David Dixon\* (1990)

Frank W. Feero (1989)  
185 Princess St.  
St. John, N.B. E2L 1K8

Denis Hamel (1990)  
#11-390 Ch. St. Louis  
Quebec, PQ G1S 1B6

Senator Henry D. Hicks (1989)  
Dalhousie University  
Halifax, N.S. B3H 4H6

Samuel J. Horton (1989)  
5197 Sonora Drive  
North Vancouver, B.C. V7R 3V7

James E. Kraemer\* (1989)

Bernard Laval e (1989)  
9170 Millen  
Montreal, P.Q. H2M 1W7

Arthur W. Leggett (1989)  
1945 Lawrence Ave. W.  
Weston, Ontario M9N 1H3

Michael Madesker\* (1990)

Alan G. McKanna (1990)  
2202-299 Mill Road  
Etobicoke, Ontario M9C 4V9

Michael Millar (1989)  
292 Shanty Bay Road  
Barrie, Ontario L4M 1E6

William G. Robinson\* (1990)

Keith R. Spencer (1990)  
Dept. of Sociology  
5th Floor Tory Bldg.  
University of Alberta  
Edmonton, Alberta T6G 2H4

Harry Sutherland (1989)  
P.O. Box 100  
First Canadian Place  
Toronto, Ontario M5X 1B2

## OFFICERS

### Advertising Manager

Paul M. Burega  
P.O. Box 15765  
Station F  
Ottawa, Ontario K2C 3S7

### Anti-Theft Committee Chairman

Michael Millar\*

### Arbitration Committee Chairman

Harry Sutherland\*

### Board Secretary and International Liaison

Harry Sutherland\*



**LA "ROYAL PHILATELIC SOCIETY of CANADA"****1988-1989****Patron**

Son Excellence la très honorable Jeanne Sauvé, C.P. C.C., C.C.M., C.D.  
Gouverneur général du Canada

**Chapter Medals and Slide****Programmes, Manager**

Edward (Ed) Beaubien  
Box 441  
R.R. 2, Orleans, Ont. K1C 1T1

**Complaint Committee Chairman**

Arthur Leggett\*

**Convention Coordinator**

Keith R. Spencer\*

**Coordinator of Youth Education****Programme**

Denis Hamel\*

**Corporate Affairs Manager**

(to be appointed)

**Editor**

Jim Haskett  
23 Seneca Place W.  
Lethbridge, AB T1K 4M7

**Editeur francophone**

Richard Gratton  
C.P. 133  
Dorion-Vaudreuil, P.Q. J7V 5W1

**FIP Representative for Youth Philately**

M. Madesker\*

**Historian**

Ralph D. Mitchener  
1253 Sherman Drive  
Ottawa, Ontario K2C 2M7

**Insurance Plan Manager**

Paul Smith  
Mitchell & Ryerson Ltd.  
188 Eglinton Ave. E.  
Toronto, Ontario M4P 2X7

**Judges Accreditation Programme**

M. Madesker\*

**Judging Seminars, Manager**

M. Millar\*

**Membership Manager**

Clifford R. Guile  
342 St. Clair Ave. E.  
Toronto, Ontario M4T 1P4

**Officer, Library Affairs**

Ralph D. Mitchener\*

**Sales Manager**

Mrs. Margaret Allen  
P.O. Box 727  
Fenelon Falls, Ontario K0M 1N0

\*Address elsewhere in list.

**ANTI-THEFT  
COMMITTEE**

If your collection is stolen  
call your local  
Police Department  
immediately and then notify the  
"ANTI-THEFT  
COMMITTEE"  
of the "Royal"

**COMITÉ DE LUTTE  
CONTRE LE VOL**

Si votre collection est volée  
signalez le immédiatement à  
votre commissariat de police local  
et faites-en part au  
"COMITÉ DE LUTTE  
CONTRE LE VOL"  
de la "Royal"

Telephones/Téléphones:

Atlantic Canada, Ontario/L'Atlantique et Ontario (705) 726-5019

Quebec/Québec (418) 687-4935

Western Canada/L'Ouest Canada (604) 261-1953

PO Box/CP 745

BARRIE, Ontario, Canada

L4M 4Y5

Chairman/Président — Michael Millar

Members/Membres — Denis Hamel, William G. Robinson

# WANTED TO BUY

1. Canadian Precancels: collections, accumulations.
2. Canadian Revenues: collections, accumulations.
3. Early Canada Covers: Scott #1 to #103.
4. Any newly discovered Canada postage errors and varieties; colors missing, imperfs., part perfs., misplaced perfs., etc., In the past 30 years have purchased over \$2,000,000.00 net worth. See my booklet, "Some Canadian Errors". Price \$6.00.

All above to any amount for prompt cash. Write first stating what is for sale. Selections of above for sale. Yes, even a nice 12d on cover is available.

\* \* \*

Memo: 1985, 50¢ booklets. What varieties found in these, would you have for sale? Wanted; any flaws, untagged booklets, etc. If not for sale describe what you have. I'll be publishing a catalogue of these fascinating booklets.

Memo: Canada fine used 1951 onwards. Am interested in small or large used supplies, especially of the odd and better values. This includes used booklet panes, coils, etc. Not particularly interested in buying such for cash as a great deal of work is involved in sorting and grading the stamps for the market. Will take small or large lots on an agreed net basis, the proceeds to be used in purchasing whatever is needed for your collection from my selections. Write first with some sort of an outline of what you may have.

**K. BILESKE LTD.,**  
STATION B  
WINNIPEG, MANITOBA  
CANADA R2W 3R4

**K. BILESKE LTD.,**  
P.O. BOX 500  
PEMBINA  
U.S.A. 58271

or



# EDITOR'S NOTES

by Jim Haskett

## NEW YEAR'S GREETINGS

As this is being written, 1989 is more than a month and a half away. But as one year draws to a close and another one dawns, it is appropriate to offer New Year's greetings to all members of the Royal. May 1989 bring new joys from your hobby.

## CAPEX TO RUN STAMPEX

Stampex, a major annual exhibition usually held in Toronto each spring, will now be operated and controlled by CAPEX (Toronto Association Philatelic Exhibitions Inc.), the non-profit organization which staged Canada's last three international exhibitions, CAPEX 78, CANADA 82 and CAPEX 87.

The move will have particular significance for those collectors who wish to exhibit at FIP international shows. As noted recently, rule changes require that for an exhibit to qualify for entry at and FIP-sanctioned show, it must first have achieved a specified award level at a national-accredited show in the country of residence of the exhibitor.

As STAMPEX is the only regular nationally-accredited show in eastern Canada, it will provide collectors with an annual chance to meet international entry standards.

STAMPEX, too is known for its slate of programs of lecturers and seminars on specialties and topics of interest to collectors. That will continue under CAPEX's guidance, said Ken Rowe, executive secretary of CAPEX.

Michael Madesker and Gus Snels, the two well-known philatelists who were instrumental in establishing STAMPEX, will continue to be associated with the exhibition. CAPEX has established executive, judging and exhibits and trade committees to oversee STAMPEX. The dates of its 1989 show are June 23-25 in Constitution Hall, Metro Toronto Convention Centre, Toronto, Ont.

## CANADIANS DO WELL

Harry Sutherland, a director of The Royal and its representative for FIP, recently sent a breakdown of medal winners by country from Finlandia 88, and FIP-sanctioned show in Helsinki, Finland.

The U.S. led the way with six large gold medals, 16 gold and 82 medals in all. West Germany was second, Italy third, Finland fourth and Great Britain fifth. At Finlandia, Canada was 24th with no large gold medals and just one gold.

However, when Mr. Sutherland applied a points system — from nine for a large gold down to one point for a diploma — similar to that used in Olympic Games rankings, Canada and several other nations fared much better.

Under the points system, Canada jumped to 13th place. While the U.S. and West Germany remained 1-2 in the points system, Italy fell to 10th place, Finland moved up a notch to third and Sweden, in 7th place in the medal standings, jumped to fourth in the points.

Also moving up in the points system were such countries as Switzerland, Denmark and Norway, and the Soviet Union, from 15th to eighth place. Britain was fifth in both rankings.

Nations such as Australia, Israel and Argentina, which finished fairly high in the medal rankings because of large-gold winning collections, plummeted in the points standings.

What it all means is that nations which have a high proportion of entries which win medals in the large silver to large vermeil range, a very creditable rating at the international level, tend to do very well in the points ratings, even though they have few or no large gold winners. Nations which rank high in the medal standings because of a few large gold winners but don't have the depth of middle-rank collectors tend to drop in the points standings.

Under the points system, at least, Canada and several other nations appear to have a remarkable degree of depth among their international exhibitors.

## CANADIAN PAPER

The Winnipeg Philatelic Society's *Buffalo* uncovered an important bit of news for collectors. Canada Post is to resume printing stamps on a Canadian-made paper. Peterborough Paper Converters has had its paper approved for commemorative issues, according to its president, R.B. H. Jameson. So far the 37-cent Parliament



coil is the only stamp printed on Peterborough paper.

Until the early 1980s, Abitibi-Price supplied stamp quality paper for Canadian issues. For a few years this decade, Rolland Paper of St. Jerome, Que. became the major supplier of stamp paper. For the past couple of years, Canada Post has used stamp paper from overseas suppliers such as the British firm Harrison.



### CONSERVATION STAMP

The Fondation de la Faune du Québec (the Quebec Wildlife Foundation) has issued a \$5 wildlife conservation stamp to raise money for the protection of wildlife habitat.

It features a Jean-Luc Grodin painting, Ruffed Grouse, and is available in a single-stamp booklet or a four-stamp souvenir sheet from its distributor, Darnell Inc., PO Box 1104, Station A, Montreal Que. H3C 2X9.

Cost of the single is \$5 plus \$1 postage and handling (\$5 US ppd); for the souvenir sheet it is \$20 plus \$2 postage and Handling (\$18.50 US ppd).

The conservation stamp went on sale Oct. 3 and will be removed from sale on March 31, 1989. Just 5,000 souvenir sheets and 80,000 single stamp booklets were printed on Harrison paper with PVA gum by Boulanger Inc. in six-colour lithography.

### A SAD NOTE

Ethel Mae Wellburn, wife of well-known Canadian philatelist Gerald Wellburn, FRPSC, died at Victoria, B.C. on Sept. 29, 1988 at the age of 87 years.

Mrs. Wellburn had two main interests in her life, her family and gardening, and supported

her husband of 67 years in all his interests, including his superb collection of British Columbia stamps and postal history. Many will remember her with Mr. Wellburn at CAPEX 87.

A few years ago Mr. and Mrs. Wellburn toured the Okanogan region of B.C., in a restored antique car.

The funeral service at St. John the Divine Church in Victoria was attended by Sam Horton and Bill Robinson, the two B.C. directors, and Jack Wallace, a former director, representing the RPSC, as well as many philatelists from Victoria, Vancouver and other parts of B.C.

This gracious and courteous lady is survived by her husband, daughter Lois (Mrs. Jack Phillips), son Vernon, and several grandchildren.

As noted in the November-December issue, Henri Gauthier, named a Fellow of the RPSC in Winnipeg last year, died Nov. 1, 1988 in Gloucester, Ont. at the age of 90. He is survived by his wife Carmela Begin, son Pierre of Hull, daughters Mrs. Marthe Allen and Mrs. Denise Ladouceur of Ottawa, seven grandchildren and one great-grandchild.

Our sincerest sympathies to both families.

### MEMBERSHIP MAILINGS

As a policy, the Royal Philatelic Society does not sell its membership list nor does the Society provide a mailing list to dealers or any organization. Our members are known for their integrity and expect their privacy to be maintained. The Society takes great care to protect its membership.

The National Office can provide a service by mailing auction catalogues, dealers' price lists etc. to R.P.S.C. members. This is done at the cost of labour plus postage.

Alternately, we can arrange to insert catalogues or advertising matter etc. into *The Canadian Philatelist* at a special cost.

Those interested in either service should write: The Office Manager, National Office, Royal Philatelic Society of Canada, P.O. Box 5320, Station "F", Ottawa, Ont., Canada K2C 3J1.

### WILDLIFE STAMP CRITIC

Frank Baufeld, an RPSC member, naturalist and columnist for *Outdoor Canada*, is among those not enchanted with Canada Post's mammal definitive series issued last year.





Flown in the Sopwith Pup C-FRFC on the occasion of the inauguration of the National Aviation Museum on June 17, 1988, by Her Excellency The Right Honourable Jeanne Sauv , Governor General of Canada.

Enveloppe qui a vol     bord du Sopwith Pup C-FRFC le 17 juin 1988,   l'occasion de l'inauguration du Mus   national de l'aviation, par Son Excellence la tr  s honorable Jeanne Sauv , Gouverneur g  n ral du Canada.



A limited number of souvenir covers commemorating the opening of Canada's National Aviation Museum June 6, 1988 are still available. The covers were flown in a Sopwith Pup (C-FRFC) to mark the occasion. To order, send \$10 along with your name and address to: NAM First Day Covers, National Museum of Science and Technology, Communications & Marketing Division, PO Box 9724, Ottawa Terminal, Ottawa, Ont. K1A 5A3.

In the November 1988 issue of the outdoors magazine, he pointed out several deficiencies in the stylized designs of the mid-values, issued early last year.

The 43-cent lynx stamp, he said, does not look much like the lynx which Canada Post describes: "long-tufted ears, cheek fur and a black-tipped tail."

A close examination of the stamp, says Baufield, reveals ears that aren't tufted and a tail tip that is white. "Instead of a long-legged greyish cat, what you have is a chunky, orange cat — more like a bobcat than a lynx."

The "real horror", he says, is the 74-cent wapiti stamp. It looks more like it was modeled from a stuffed head in an old hunting camp than the sleek, beautiful animal that it is.

Baufield points out that for European collectors at least, Canada Post confuses the identity of the wapiti by identifying it as a species of elk. In Europe, the moose is known as an elk.

A couple of more items for C.R. Black's Quizzical Canadian Stamps, it seems.

### RARITIES IN LIVERPOOL

In another first, the British Library which oversees the national collections of the United Kingdom, loaned some of the world's rarest

stamps for a major museum exhibition in Liverpool in October and November.

It's the first time any of the material has been on exhibition outside of London.

Included in the Liverpool Museum's Stampway to the World exhibit were many items from the Tapling collection such as the 1847 Mauritius 1d and 2d 'Post Office' issues, the 1861 Cape of Good Hope 1d and 4d color errors, 1851 Hawaii 'missionaries', the inverted frame error of the 1854 Western Australia 4d stamp and of course, and 1851 12d black of Canada.

### BY ROYAL INVITATION

Members of the Royal Philatelic Society, London and the Royal Societies of Canada, Australia and New Zealand who reside in the San Diego, California area are invited for a special Royal Weekend Feb. 10-12 when SANDICAL, the annual APS national stamp exhibition sponsored by the San Diego Philatelic Council, is held.

Royal events include a banquet on the Friday night — men must wear their Royal Society tie or one indicating their stamp collecting preference and women a Royal scarf or Love pin.



On the Saturday, an early breakfast is planned, followed by a meeting with the United States Philatelic Classics Society and lunch. The afternoon is reserved visiting SANDICAL.

Of special interest is a special Class of Honour one-frame competition for Royal members only. The Royal event will be headquartered at the Executive Hotel in San Diego. The Royal Weekend is being organized by Stanley C. Jersey, a Fellow of the Royal Philatelic Society, London. He estimates there are about 100 Royal members, in and around San Diego. For details, write him at PO Box 713, Carlsbad, CA 92008, USA.

### WHERE THE PROOFS GO

The printing of die proofs was a standard pre-production procedure for engraved Canadian stamps. Those die proofs, however, had greater use than a check to see if everything was fine in the production of the stamp to that point.

Post Office Department, Canada  
FINANCIAL BRANCH

Ottawa, 15th May, 1939.

MEMORANDUM RE DIE PROOFS:

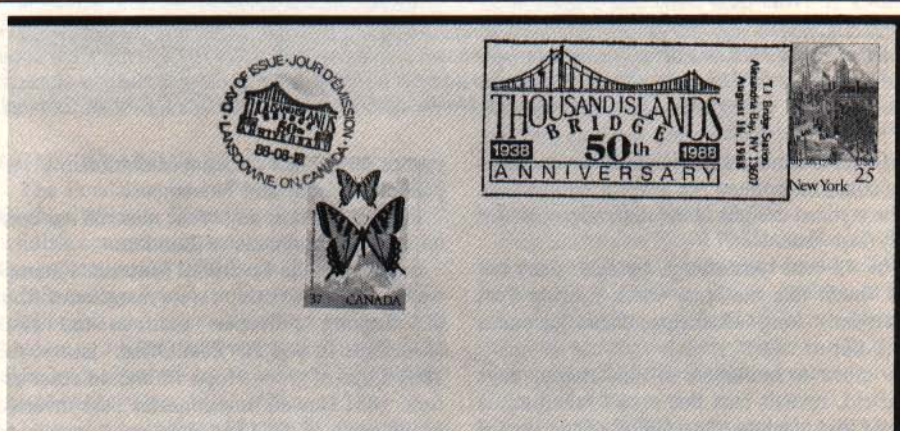
Six die proofs of each of the following required:

- 10¢ Special Delivery, green,
- 1¢ Princess Elizabeth and Princess Margaret Rose,
- 2¢ National Memorial,
- 3¢ King and Queen,

to be disposed of as follows:

- 1 each returned to Can. Bank Note Company during preparation of stamps (See files 13-13-25 and 13-7-23)
- 1 each to go His Majesty the King (with booklet at present being prepared under Mr. Coolican's jurisdiction)
- 1 each to go to Postmaster General
- 1 each to go to Deputy Postmaster General
- 1 each to go to Assistant Deputy P.M.G.
- 1 each for Departmental records.

Copies of die proofs were also prepared for presentation and the accompanying reproduction from the desk of the Financial Superintendent of the Post Office Department on May 15, 1939 gives an indication of who received die proofs. The letter is part of the Post Office records at the National Archives in Ottawa.



### SPECIAL CANCELS

Many collectors seek out special cancels for their collections. And Canada Post marks many special events through each year with such special cancels. Often, however, there is little time between the decision to honour an event and the time the actual event is held. As a result, philatelists seldom learn about these events.

One such occasion was the 50th anniversary of the opening of the International Thousand Islands Bridge which links Lansdowne, Ont., a few miles east of Kingston, to Alexandria Bay, NY, across the St. Lawrence River. Highway 81 runs south from the bridge

to Watertown and Syracuse, NY.

The important connecting bridge between the two countries was opened Aug. 18, 1939 by Prime Minister Mackenzie King and President Franklin Roosevelt.

The 50th anniversary was a joint undertaking with Canada Post operating a special facility on the Canadian side and the USPS operating one on the American side. The celebration took place on Aug. 18, 1988 with over 50,000 attending the event. One enterprising group prepared 3,800 covers to mark the event and was sold out several hours before closing time.



**ANOTHER RARE BIRD?**

The 50-cent Masterpieces of Canadian Art stamp issued May 20, 1988 was recalled, as is standard practice with Canadian commemoratives, after six months, on Nov. 20.

It could be another modern issue that's difficult for collectors to find, particularly in fine used condition, as it did not pay exactly any of the standard first class, U.S. or international rates.

We've heard one Canadian dealer is selling used copies of the stamp, which he has hand-cancelled at his local post office, at 75 cents.

We have access to a fair amount of business mail daily and have seen only one copy so far. And that one was obliterated with the less-than appealing Postal Code 'killer'.

**RATE CHANGES**

The start of the New Year also brings an increase in postal rates approved by the federal government in the fall of 1988. The first-class rate in Canada goes up one cent to 38 cents. The U.S. rate is also up a cent to 44 cents. The international rate climbs two cents to 76 cents.

**RPO RETURN**

Intrepid cancel collector Keith Spencer of Edmonton reports via *The Bulletin* of the Edmonton Stamp club that RPO cancels are returning — but not to signify railway post offices. In the September 1988 edition of *The Bulletin*, Keith illustrates a Pincher Creek, Alta. RPO cancel of Aug. 3, 1988 spotted by Neil Hughs. The RPO in this case stands for 'Retail Post Office', franchise outlets, we presume, that Canada Post is determined to introduce across the country to replace Sub-Post Offices.

**1989 STAMP ISSUES**

Canada Post has released issue dates for commemorative and definitive stamps in 1989.

The issuing year started in 1988 — Dec. 29 — with the release of the Karsh Queen portrait and the long-running Parliament definitives in the new 38-cent first class rate.

More definitives follow on Jan. 18 with walrus, musk-ox and grizzly bear definitives for the new U.S., oversize first class, and overseas rates.

New high value one and two-dollar definitives featuring Canadian architecture are planned for later in the year.

Several commemorative issues planned for 1989 will be of interest to topical and thematic collectors. They include four explorer stamps, photography stamps for Canada Day, art and poets, and military — two marking anniversaries of famous Canadian regiments and a quartet marking the 50th anniversary of the out-

break of World War Two.

Issue Date	Subject	Value
Dec. 29/88	—Parliament Buildings	38 cents
	—Queen Elizabeth II (definitive stamps)	38 cents
Jan. 18/89	—Mammals	
	—Walrus	44 cents
	—Musk-ox	59 cents
	—Grizzly Bear (definitive stamps)	76 cents
Feb. 1/89	—Small Craft	4 x 38 cents
	—Native Boats	
Mar. 22/89	—The North	4 x 38 cents
	—Matonabee	
	—Sir John Franklin	
	—J.B. Tyrrell	
	—Vilhjalmur Stefansson	
May 5/89	—Architecture	\$1.00
	—Runnymede Library, Toronto	\$1.00
	—Railway Station, McAdam, N.B.	\$2.00
June 23/89	—Canada Day - Photography	4 x 38 cents
	—William Notman	
	—Alexander Henderson	
	—W. Hanson Boorne	
	—Jules-Ernest Livernois	
June 29/89	—Masterpieces of Canadian Art - Ceremonial Frontlet	50 cents
July 7/89	—Canadian Poets	2 x 38 cents
	—Louis H. Fréchette (1839-1908)	
	—Archibald Lampman (1861-1899)	
Aug. 4/89	—Mushrooms	4 x 38 cents
Sept. 8/89	—Princess Patricia's Canadian Light Infantry and Royal 22 <sup>e</sup> Régiment	2 x 38 cents
Oct. 4/89	—The Arts and Entertainment	4 x 38 cents
	—Film, Dance	
	—Theatre, Music	
Oct. 26/89	—Christmas	33 cents 38 cents 44 cents 76 cents
Nov. 10/89	—World War II	4 x 38 cents
	—Canada Declares War	
	—Army Mobilization	
	—Royal Canadian Navy Convoys	
	—British Commonwealth Air Training Plan	



NOW UNDER

ONE ROOF

# EXPERTISE QUALITY - SERVICE

210, Victoria ave, Westmount, Montréal, Qc H3Z 2M4  
Tel.: (514) 489-8489 • Toll free: 1-800-361-3088



**Lighthouse  
Publications  
(Canada) Ltd.**

AND



**STANLEY  
GIBBONS**

- From the most sophisticated hingeless albums to just the right kit or album for the beginner
- From the first step towards a lifetime's enjoyment, to guidance for completion of a very special collection
- From worldwide catalogs, to expertise in British Commonwealth
- From thematic catalogs, to "HOW TO" handbooks (how to start, to identify, to arrange, to write-up; all you need to know about this fascinating hobby).

**YOU WILL FIND IT AMONG THE PRODUCTS OF  
THESE TWO LEADERS IN THE WORLD OF PHILATELY**

**YES, PLEASE SEND ME (NO CHARGE)**

- ☐ The **LIGHTHOUSE** product guide
- ☐ The **STANLEY GIBBONS** pricelist
- ☐ A sample of the **LIGHTHOUSE** mounts

- ☐ A sample of the mount size chart
- ☐ A sample **LIGHTHOUSE** albumpage

**INCLUDE \$0.50 IN STAMPS  
TO COVER POSTAGE**

NAME

TELEPHONE

ADDRESS

PROVINCE

POSTAL CODE



## Canadian Stamp Price Record Set At Firby Sale

A record price for a Canadian philatelic item was set Oct. 29 when John Jamieson of Saskatoon Stamp Centre paid \$203,000 Cdn. on behalf of an anonymous Toronto collector for a mint pair of the 12-penny black issued in 1851.

"I was pleased," Jamieson said. "I thought it was a good price." That's the highest price ever paid for any Canadian philatelic item at public auction.

Bidding at the auction began at \$135,000 (US) and increased by \$5,000 increments. Four bids later, Jamieson was sitting at \$150,000 (US), and his rival bidder could go no higher. Add on the auctioneer's \$15,000 commission, and the buyer paid \$165,000 (US), or \$203,000 Cdn. The price could have been much higher, Jamieson believes, considering that the pair might not be available again in a collector's lifetime. Last June, he predicted the pair could sell for anywhere up to \$500,000.

Jamieson wouldn't reveal his Toronto client's identity.

"This piece is certainly not for the average stamp collector, by any means," he said.

Purchased at the Charles G. Firby Auctions Sale in Birmingham, Mich., the 12-penny pair was part of a 450-lot auction of Canada's first issue formed by Sam Nickle.

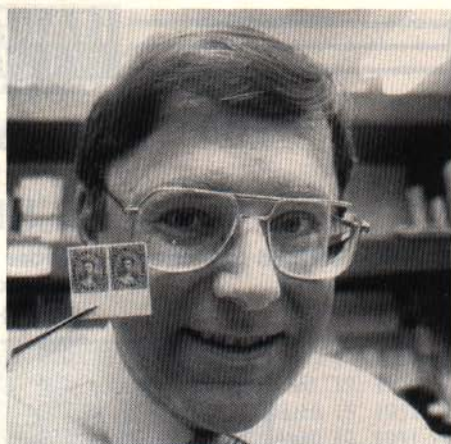
The sale prices indicate a strong interest in early Canadian philatelic items. Prices realized (including commission) included \$7,425 US for a 12d plus 10-cent compound die proof, \$13,750 for a used block of Canada No. 1, the three-penny beaver, and \$7,150 for an unused 6d on laid paper. A cover with six 6d stamps addressed to England realized \$13,200.

Single copies of 12d black fetched \$20,900 for a mint and \$33,000 for a used.

A pair of 10d on cover brought \$8,800 while a cover with a pair of 7 1/2d and a pair of 3d stamps sold for \$24,750.

Early perforates did well, too. A cover with 12 copies of the 1/2d was knocked down at \$13,750 while covers with a 3d perforate brought between \$5,775 and \$6,875.

The vignette of the "12-penny" was taken from a painting of Queen Victoria in her robes



*John Jamieson with the price record-setting pair of 12d blacks.*

Saskatoon Star-Phoenix Photo

of state as painted by Alfred Chalon in 1837. It cost 12 pence in 1851 (rather than the British one shilling — to avoid confusion between Imperial and Colonial currencies). The stamp was issued June 14, 1851, to pay the half-ounce rate to Newfoundland or the British West Indies via Halifax and Liverpool, double-weight letters to the United States or quadruple rate domestic letters. Only 1,450 copies were sold, before it was withdrawn from post offices Dec. 4, 1854. It is estimated that only approximately 100 copies still exist.

Only three mint pairs survive to 1988: one in the Canadian Postal Museum; one in a collection in the United States; and this one, the finest of the three. A brilliant horizontal pair with a clear and sharp impression, rich deep shade, huge margins and a full sheet margin at the bottom — the auctioneer, rightfully, described this as "a superb and beautiful showpiece."

In 1968, the last time this pair was sold at auction, it was purchased jointly by Jim Sissons and Bob Lyman for \$39,000 (US), then also a record for any Canadian stamp. These two dealers had decided to split the pair into two singles, each to take one and go their separate ways. A last minute decision to call prominent Calgary collector, Sam Nickle, resulted in a sale, and saved this superb pair.

Nickle owns the only stamp that might fetch as much as the 12-penny pair. That's a 12-penny black used on an envelope. The finest example of its kind. But according to Nickle it's not for sale right now, and Jamieson doubts its price would match that of the pair anyway. □



**HARMERS**  
*of LONDON*

# The "John Ayre" Collection of ST. HELENA

formed and offered by order of John Ayre of Newfoundland  
 At Public Auction in London

**MARCH 8, 1989**



1816 St. Helena Packet Letter, one of a small number known.

This exceptional collection, painstakingly brought together over a number of years, covers all facets of St. Helena history.

Letters date back to 1819 (to the Island), 1775 (from the Island), very many post-stamp entires with attractive multiples, rare adhesives including 1856 imperf., 1861 clean cut perf., unused and used, 1863 1d mixed bars in block, 1864-80 1d, 3d (pair and single), all variety imperf., 1884-94 1/- double surcharge unused, wide range of "SPECIMEN" hand-stamped, ms. and printed, many victoria and Edward VII die proofs on cards, essays for the War Tax overprints, 1922-37, mint and used sets, broken mainmast (16, values to 5/), torn flag (16, including 15/- in pair with normal, £1), cleft in rock (18, values to 5/-).

The collection concludes with about 140 Boer Prisoner-of-War covers with many showing scarcer markings - a most intriguing group.

*The de-luxe catalogue with colour and black-and-white illustrations is available free to members of the "Royal". Contact Harmers of New York Inc., 14 East 33rd Street, New York N.Y. 10016, U.S.A. Phone 212 532-3700.*



91 NEW BOND STREET, LONDON W1A 4EH. TEL: 01-629 0218  
**LONDON                      ZURICH                      NEW YORK**





# Letters to the Editor

## THAT'S 'SS' AND 'TES'

I am sure the Admiralty in London would be surprised to find SS Segwum, a small steamer on a small Canadian lake has become — according to you — one of Her Majesty's Ships — a Royal Navy naval vessel. I hate to do it, too, but the name of the ship is Princess Marguerite — and not, according to you SS Marguerite. As a turbine electric ship she would be TES Princess Marguerite.

You can be excused as a prairie dweller, knowing only prairie schooners which, by the way, brings out the fact I'm looking forward to see the Angus Walters stamp.

Les Rimes

West Vancouver, B.C.

## 'OFFICIAL' FIRST DATES

The first official stamps of Canada overprinted O.H.M.S. came out just about 40 years ago. They replaced the perforated officials. The replacement was gradual. As the stocks of the perfins ran out they were replaced by the overprinted stamps. Consequently, there was no such thing as First Day Covers and first day of issue and indeed there appears to be very little information as to the date the overprinted stamps first came into use by the various government departments. The philatelic literature gives no information whatever of the dates on which these stamps were first used.

Recently I examined thousands of officials on piece and other dated copies and have compiled a list of the earliest date of use (EDU) from 01 to 024 (Scott Catalogue numbers). The following earliest dates were found:

01	Feb. 23, 1950
02	March 9, 1950
03	Feb. 23, 1950
04	Feb. 18, 1950
06	Feb. 21, 1950
07	Feb. 5, 1950
08	March 14, 1950
012	Sept. 23, 1950
013	Aug. 11, 1950
014	May 20, 1950
015	March 1, 1950

015A

G overprints

016

017

018

019

020

021

022

023

024

June 13, 1950

April 16, 1951

Feb. 22, 1951

Jan. 5, 1951

Dec. 16, 1950

May 12, 1951

Dec. 12, 1950

March 15, 1951

April 12, 1951

Oct. 20, 1952

The above list is a start and I would like to enlist the co-operation of all interested parties in establishing the first day of usage of these. I will act as the clearing house for all the information and will publish all the findings in C.P. The difficult dates to establish will be for 09, 010, 011, 025 and 027. Any help I can get from fellow members will be greatly appreciated. Please write to the undersigned and help to compile an accurate list.

Alex Rezanowich

Box 20047, Boler Rd.,  
London, Ont. N6K 3G6

## NEW ISSUES

I just wished to place my vote of yes to the inclusion of new issue news in *The Philatelist*. The Canada Post Corp. is not the most reliable source to count on for dependable, timely information.

And yes! I would like more details and comments on new and almost new issues.

I would also like to know what other collectors are looking for in their collections. I, for example, don't know what makes a good post mark good. I once placed a high bid at an auction to find out what a squared circle was.

An Australian friend of mine was recently presented in *The Scott Monthly* for his collection of famous autographs over appropriate stamps. There must be more of these clever and interesting collectors and collections out there.

The Journal is alive and looking good, thank you.

Ian MacAulay  
Ottawa, Ont.



Just a short note to say I'm in favor of your reviving the practice of noting new stamp issues in your column.

Also, I think that you should include additional specifications, dimensions, perforation, paper type, plate numbers, printing process, tagging, printer, gum type and quantity issued.

By publishing new stamp issues along with specifications, it will eliminate the need for collectors to keep a copy of each stamp bulletin issued by Canada Post. Also, the journal will be used as a quick and accurate reference on new stamp issues.

Wayne A. Pike  
Brampton, Ont.

You, in *The Canadian Philatelist*, elicit comments on the matter of reviving the practice of noting new issues emanating from the Canadian post office.

I've opposed this practice for several years. While not intending to carry on a battle of semantics, I draw a fine distinction between philatelists and students of postal history on one hand and collectors, hoarders etc. on the other. I feel the collection of modern "labels", seemingly largely issued to satisfy a perceived collector demand, is not philately — granted the same was said in 1897 when the Jubilees were issued.

I feel *The Canadian Philatelist* and other similar publications, ought to be catering to the interests of serious students. Frankly, serious studies are the building stones of future research. More importantly, the information on new issues can be had free of charge, by direct mail from the Post Office. Why waste the time and valuable space?

In penning material for the op-ed pages of various newspapers, I face a similar dilemma — how can I compromise and produce a non-academic column which will appeal to the admittedly more educated class which reads editorial matter rather than just the sports and comics? I do not attempt to cater to the lowest common denominator and I feel that *The Canadian Philatelist* ought not to do so either. It ought to establish itself as a generalist journal for a wide range of philatelists with a varied range of interests and not waste its valuable space on material readily available elsewhere.

This is not an attempt to seek an elitist journal, the scope of which its parameters defined by elitist interests but rather I envision a

generalist society whose official organ serves as a springboard for a wide variety of philatelic interests at a reasonable level. However to include notes on new issues etc. seems to demean a serious journal. Moreover, articles on very modern material might perhaps also be reconsidered.

R.B. Winmill  
London, Ont.

It pleases me very much that you are now listing the new issues in our Journal. Whenever you can spare the time and space for more details, that would be appreciated also.

For many years I have subscribed to *Mekeel's Weekly Stamp News*. It gives good coverage to all Canadian stamp programs. However, it is a newspaper and rather difficult to preserve.

My collecting today is almost entirely Canada wildlife and conservation only.

Thank you again for planning to revive the Canadian stamp issue column.

Dorthea M. Quackenbush  
Oriskany Falls, N.Y.

I receive Canada Post's brochures because I have a standing order with the post office and therefore receive their information on new issues. Nevertheless, I would like to see *The Philatelist* provide notes on new issues, but preferably information that is not included in the post office brochures.

Part of my fun in collecting Canadian stamps is my write-up in my albums and I like to include information that is humorous or off-beat or unusual about each issue. Thus, anything I can glean from any sources is of value to me. I have included considerable information from *The Canadian Philatelist* in my write-ups and this adds an interesting dimension to my collection in my opinion. I also include in my notes the reference source of my information, even though others rarely see what I've written.

In summary, then, I'm very much in favour of a section on new Canadian issues. I find *The Canadian Philatelist* a valuable source of information and quite enjoy it.

Norman Gulko  
Willowdale, Ont.

My short answer about "What do you think" in the Sept./Oct. issue of *The Canadian Philatelist*:

The notes about new issues are good, if there will be more details and background informa-



tions. The information in the bulletin from the Canada Post (Philatelic Centre at Antigonish) were better some years ago. But the last few years this information is not enough for collectors overseas.

Collecting stamps without knowledge about the background of the issue is "collecting of paper with gum and perforation".

I think we collectors overseas would be glad if it is possible to have a column about new Canadian stamp issues.

Gerhard Stahl  
Scheden, West Germany

(Editor's note: As a result of replies received so far, *The Canadian Philatelist* will continue the practice of following in detail new Canadian stamp issues. While it is realized that such information is easily obtained from Canada Post's philatelic branch in Antigonish, it appears from the replies that Royal members would also like to have such information in their Journal as it serves as a quick reference source.)

## MAIL AUCTIONS EVERY 6 WEEKS

- \* Canada and Provinces
- \* United States
- \* Br. Commonwealth
- \* Foreign
- \* Covers and Postcards
- \* Cancellations

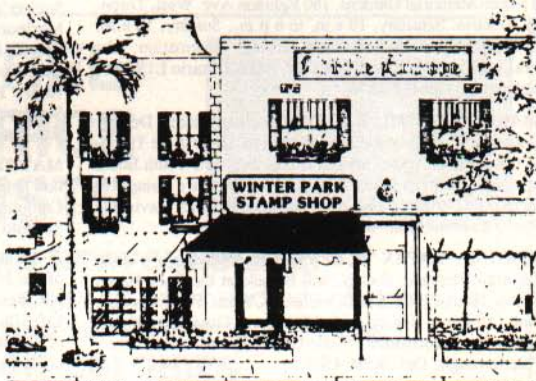
Write today for a free well illustrated copy of our next sale.

## VANCE AUCTIONS LTD.

Box 267, Smithville  
Ontario, Canada  
L0R 2A0

**WHEN VISITING  
CENTRAL  
FLORIDA  
BE SURE  
TO STOP BY.**

**The Best  
Stamp/Postal History  
Inventory in Florida**



**Michael Rogers**

**WINTER PARK  
STAMP SHOP**



**340 Park Ave. North, Winter Park, FL 32789**  
**Mon. through Sat. 10-6 (4 miles North of Orlando) 407-628-1120**



# COMING EVENTS

1989

**JAN. 20-29 - INDIA '89**, FIP - sponsored world philatelic exhibition to be held in new Delhi, India. Canadian Commissioner: David Dixon, P.O. Box 1082, Oakville, Ont. L6J 5E9.

**JAN. 27-28 - CATHEX '89**, the annual exhibition and bourse of the St. Catharines Stamp Club will be held in the Fairview Mall, Geneva Street, St. Catharines ON 12 noon to 9 p.m. Friday and 9 a.m. to 5 p.m. Saturday. Free admission. Sixteen dealers, club circuits and exhibits. Information: Roy Houtby, PO Box 2145 Station 'B', St. Catharines Ont., L2M 6P5.

**FEB. 25-26 - NIPEX '89**, the Niagara Philatelic Society's annual stamp exhibition will be held in the Stamford Lions Club Hall, 3846 Portage Road, Niagara Falls, Ont., 10 a.m. - 5 p.m. both days, free admission. Information: Dave Hill, P.O. Box 2038, Station 'B', St. Catharines, Ont. L2M 6P5.

**MARCH 4-5 - NYPEX '89**, the North York Philatelic Society annual stamp show and bourse, will be held at Earl Bales Community Centre, Bathurst Street, south of Sheppard, North York, Ont. Hours 10 a.m. - 5 p.m. both days. Information: Alan J. Hanks, 34 Seaton Dr., Aurora, Ont. L4G 2K1.

**MARCH 11 - OAKPEX '89**, the 16th annual exhibition and bourse of the Oakville Stamp Club, will be held in Room A of the River Oaks Recreation Centre, 2400 Sixth Line, Oakville, Ont., 10 a.m. - 6 p.m. Exhibits, dealers, Canada Post, sales circuits. Free admission and parking. Information: Oakville Stamp Club, PO Box 524, Oakville, Ont. L6J 5B4.

**MARCH 18-19, 1989 - The North Toronto Stamp Club's** 46th annual exhibition and bourse will be held at the North Toronto Memorial Gardens, 180 Eglinton Ave. West, Toronto, Ontario. Saturday, 10 a.m. to 6 p.m., Sunday, 10 a.m. to 5 p.m. Free admission and parking. Information: Ms. Marilyn Cassie, 12 Newing Court, Ajax, Ontario L1S 2T6. Telephone 416-428-6134.

**MARCH 31-APRIL 2 - The Canadian Stamp Dealers Association** will hold its Toronto National show in the Toronto Convention Centre. Special events include a Youth Booth at which youths attending the show will receive a stamp collecting kit. Information: A. Kosztandy 902-225 Davisville Ave., Toronto, Ont. M4S 1G9.

**APRIL 8 - KAPEX '89**, the 33rd annual stamp show of the Kawartha Philatelic Society, will be held at the Rock Haven Motor Hotel, 1875 Landsdowne St. West, Peterborough, Ont., 10 a.m. - 5 p.m. with 12 dealers, Canada Post, free admission. Information: Marie Olver, 138 Aberdeen Ave., Peterborough, Ont. K9H 4W6.

**APRIL 8 - Barrie District Stamp Club's** 28th annual exhibition and bourse will be held in The Continental Inn, Dunlop Street at Highway 400, Barrie Ont., 10 a.m. to 5 p.m. Free admission. Fourteen dealers. Information: Robert Prince, 52 Rose St., Barrie Ont., L4M 2T2.

**APRIL 15-16 - WINPEX '89**, the sixth annual exhibition and bourse of the Essex County Stamp Club will be held in the historic restored courthouse, Mackenzie Hall, 3277 Sandwich St. (just west of the international Ambassador Bridge), Windsor Ont.. Free admission and good parking, 17 dealers and USPS and Canada Post. Hours: Saturday 10 a.m. to 5 p.m.; Sunday, 12 noon to 4 p.m. Information: show chairman, PO Box 1503 Station 'A', Windsor Ont., N9A 6R5.

1989

**APRIL 15-16 - NOVAPEX '89**, the annual exhibition and bourse of the Nova Scotia Stamp Club at the Lord Nelson Hotel, Spring Garden Road, Halifax. Open to public 10 a.m. to 5 p.m. both days. Free admission, special cancel, door prizes, banquet, guest speakers. For more info on show/bourse contact: John Hall, P.O. Box 2935, Dartmouth East Postal Station, Dartmouth, N.S. B2W 4Y2.

**APRIL 19-23 - IPHLA '89**, an International Philatelic literature exhibition to be held in Frankfurt am Main, German Federal Republic. Entry forms, which must be received by Sept. 15, 1988, are available from Harry Sutherland, P.O. Box 100, First Canadian Place, Toronto, Ont. M5X 1B2.

**APRIL 28-29 - ORAPEX '89**, the 28th annual exhibition and bourse of the RA Stamp Club, will be held at the Ray Kinsella Arena of the RA Centre, 2451 Riverside Dr., Ottawa, Ont. A national show accredited by the R.P.S.C., applications to exhibit must be returned by March 14. Hours 10 a.m. - 6 p.m. Saturday, 10 a.m. - 4:30 p.m. Sunday, with 50 dealers, study groups and philatelic societies, Canada Post and USPS, free admission and parking. Information: Chair, Orapex '89 Organizing Committee, c/o RA Centre, 2451 Riverside Dr., Ottawa, Ont. K1H 7X7.

**MAY 5-7 - ROYAL '89**, the 61st annual convention and exhibition of the Royal Philatelic Society of Canada at the Hamilton Convention Centre, Hamilton, Ont. Host club is the Hamilton Philatelic Society, R.P.S.C. Chapter #51. For information, contact Vernon G. March, 200 Charlotte St., Hamilton, Ont. L8K 4V6.

**MAY 12-14 - STAMP SHOW '89**, the Winnipeg Philatelic Society's spring exhibition and bourse will be held in the Marlborough Inn, Winnipeg MB, featuring 15 dealers, Canada Post sales counter, special exhibits, court of honor, and door prizes. Admission \$1, children under 14 free. Hours: Friday 5 p.m. - 9 p.m.; Saturday 10 a.m. - 6 p.m.; Sunday 10 a.m. - 4 p.m. Information: WPS, PO Box 1425, Winnipeg MB, R3C 2Z1.

**MAY 21-31 - BULGARIA '89**, a world philatelic exhibition held under FIP patronage in Sofia, Bulgaria. Canadian Commissioner: Andrew Cronin, P.O. Box 5722, Station 'A', Toronto, Ont. M5W 1P2.

**JUNE 23-25 - PIPEX '89**, the national exhibition and show of the Northwest Federation of Stamp Clubs in Edmonton AB, hosted by the Edmonton Philatelic Society, R.P.S.C. Life Chapter No. 6. Information: Keith R. Spencer, Dept. of Sociology, 5th Floor, Tory Building, University of Alberta, Edmonton, AB T6G 2H4.

**JULY 7-17 - PHILEXFRANCE '89**, a world philatelic exhibition held under FIP patronage at the Parc des Expositions (Porte de Versailles), Paris, France. Canadian Commissioner: James E. Kraemer, 17 Commanche Dr., Ottawa, Ont. K2E 6E8.

**JULY 26-AUG. 6 - BRASILIANA '89**, in Rio de Janeiro, Brazil under the patronage of the FIAF. Canadian Commissioner is Andrew Cronin, P.O. Box 5722, Station A, Toronto, Ont., M5W 1P2.

**OCT. 6-8 - CALTAPEX '89**, hosted by the Calgary Philatelic Society. Exhibition has no entry fees, sixteen 8½ by 11 pages per frame. Bourse and various club activities. Information: CALTAPEX Show Chairman, PO Box 1478, Station 'M', Calgary AB, T2P 2L6.



## 1990

**MAY 3-13 - STAMP WORLD LONDON '90**, a World Philatelic Exhibition under F.I.P. patronage celebrating the 150th anniversary of the Penny Black, at the Alexandra Palace, London, England. Canadian Commissioner is David Dixon, P.O. Box 1082, Oakville, Ont. L6J 5E9.

**JUNE 8-10 - ROYAL '90**, the 62nd annual convention of the Royal Philatelic Society of Canada at the Ramada Renaissance Convention Centre, Regina, Saskatchewan. For information write to Dr. Frans H.A. Rummens, 94 Munroe Place, Regina, Sask., S4S 4P7.

**JULY 12-17 - DUSSELDORF '90**, an International Exhibition for Youth under F.I.P. patronage, to be held in Dusseldorf, Germany. Canadian Commissioner to be appointed.

**AUG. 24 - SEPT. 2 - NEW ZEALAND 1990**, a world Stamp Exhibition under F.I.P. patronage in Auckland, N.Z. For information, contact the Canadian Commissioner: W.L. (Bill) Percy, 18 Hyland Ave., Georgetown, Ont. L7G 3A2.

**OCT. 19-29 - WEIN '90**, a thematic stamp exhibition, including literature and youth collections in the thematic field (not F.I.P. - sponsored). Canadian Commissioner: Major R.K. Malott, 16 Harwick Crescent, Ottawa, Ont. K2H 6R1.

## 1992

**MAY 5-12 - World International Youth Philatelic Exhibition**, under the auspices of the Royal Philatelic Society of Canada and approved by the F.I.P., will be held in Montreal or Quebec City. This will be Canada's second international youth exhibition, the first having been held in Toronto in 1982. □

## BNAPS

### For The Serious Canadian Collector

The British North America Philatelic Society is for the student of Canada and Provinces

Services for members include:

- bimonthly journal, BNA Topics
- sales circuits
- annual convention and show
- study groups
- discount purchases of Canadian philatelic literature

Annual dues are \$20 Cdn/\$18 US

For information, write:

Earle L. Covert, MD,  
P.O. Box 1070, Hay River, NT  
Canada X3O 0R0



## FREE PRICE LISTS



### CANADA AND NEWFOUNDLAND

**EVERY EIGHT WEEKS...**a new list with hundreds of stamps and covers of Canada, Newfoundland and Provinces.

### FRENCH COLONIES

**EVERY TWELVE WEEKS...**a new list with over 3,000 sets and singles from more than sixty French Colonies.

*Write today for your Free copy.*

## INDIGO

BOX 308 GUELPH, ONT.  
CANADA N1H 6K5

Members of C.S.D.A., R.P.S.C.,  
B.N.A.P.S., A.P.S., F. & C.P.S.

**Tel: (519) 821-9336**

Fine Stamps for  
Collectors and Investors

## indigo



### EXCHANGES WANTED

Since the Royal Philatelic Society of Canada is the national society of philatelists in Canada, many requests for exchange partners are referred to us. As a service to our members, we are pleased to present these names, so that those who wish to do so can make overseas contacts. Please note that we have no way of checking the credentials of the individuals who write to us asking that their name be published, therefore we urge that caution be taken when answering these requests.

Hilda Vila Sainz Baranda  
Socio 255-1393, Apdo. 2222  
Havana 2, CUBA

A 38-year old collector wishes to exchange stamps with Canadian collectors to complete his "special" Canadian collection (new and cancelled stamps); can offer series (new or cancelled) from Cuba and East Europe.

Dr. Javier FCO Hall Polio  
Col. Miraflores  
Bloque 24 Casa 5  
Tegueigalpa D.C.  
HONDURAS C.A.

A Honduran collector of Seoul Olympic stamps, train and airplane stamps wishes to exchange complete sets of Honduran stamps with topical collectors based on Scott Catalogue values. Writes in English.

Mehdi and Zabra Aghasadehgy  
No. 441 Alley Martyr Mehdi  
Ershadi St. Komeil  
P.O. Box 13547  
Teheran, IRAN

Iranian brother (Mehdi) and sister (Zabra), age 23 and 21 respectively, seek correspondent in Canada and the USA (knowledge of stamps and English limited).

Jonathan Gregory  
P.O. Box 972  
Cardston, AB  
CANADA T0K 1K0

Nine-year old boy who is interested in exchanging stamps with pen pals from Canada, US and foreign countries.

### DEMANDES D'ECHANGE

La Royal Philatelic Society ne s'occupe pas normalement des échanges entre philatélistes, mais comme elle est la société philatélique nationale du Canada, on lui transmet de nombreuses demandes de philatélistes désireux de trouver des correspondants pour échanger des timbres. Ainsi a-t-elle décidé, pour rendre service à ses membres, de publier les noms des intéressés d'outre-mer, afin que ceux qui désirent établir des rapports avec eux puissent le faire. Je vous signale toutefois que nous ne savons rien des personnes qui nous demandent de publier leur nom, c'est pourquoi je vous conseille d'être prudent en répondant à ces demandes d'échange.

Ramon Barreda  
Apdo. #53  
Esteli, NICARAGUA  
Central America

Collector interested in topicals, fauna, paintings, mint and used. Writes Spanish, English, French, Portuguese and Italian.

Tom Hörelmann  
Baustraße 28  
4240 Emmerich  
GERMANY

26-year old collector looking to exchange German and West Europe stamps for Canadian stamps.

### R.P.S.C. LAPEL PINS

The Royal Philatelic Society of Canada lapel pins are available from the R.P.S.C. National Office, P.O. Box 5320, Station F, Ottawa, Ontario K2C 3J1.

**Price is \$5.00 each**  
and includes mailing



---

# PRESIDENT'S PAGE

---

by

James E. Kraemer

## ROYAL '89

The word in philatelic circles is "that Royal '89 our 61st Annual Convention and exhibition will be the best one to date". Royal '89 will be held in the "Steel City", Home of the Tiger Cats, Hamilton, Ont., May 5-7, 1989. Hosts for our 1989 convention to be held in the Hamilton Convention Centre is the Hamilton Philatelic Society, R.P.S.C. Chapter No. 51. If you have not booked your hotel accommodation by this time write to Vernon G. March, 200 Charlotte St., Hamilton, Ontario, L8K 4V6. It's not too late to also send in an entry for the National Exhibition. A vermeil award qualifies for international competition. (See Pages 39 to 42 for additional information).

## STAMP COLLECTING MONTH

February is stamp collecting month in Canada. During this period our chapters conduct special membership drives, promote stamp collecting especially among the youth, visit stamp groups in schools and in general inform the public about the pleasures, satisfaction and knowledge acquired through stamp collecting.

Canada Post sends literature and information on stamp collecting, how to organize a stamp club, how to collect stamps etc. to clubs and individuals requesting information on the hobby. Send your requests to Canada Post Corporation, Postage Stamp Division, Confederation Heights, Ottawa, Canada K1A 0B1.

The R.P.S.C. works closely and co-operatively with Canada Post in promoting stamp collecting especially during Canada's stamp collecting month.

## CHAPTER MEDALS

The R.P.S.C. keeps on hand a stock of Chapter medals for the exclusive use of our chapters. While most of the medals are used as awards for successful exhibitors at the chapters' local or regional exhibitions, they have also been used as long service awards for chapter members

etc. The chapter medals are available in five formats: Large Gold, Small Gold, Large Silver, Small Silver and Bronze.

All are 50 mm in diameter except the Small Gold and Small Silver which are 40 mm in diameter.

Medals are supplied to chapters at a cost of \$12.50 each postpaid. A good stock is on hand and although the cost of the medals, duty and federal sales tax have all increased substantially, the Society believes that it can hold to this price for the next few years.

For ordering or for additional information write to Edouard (Ed) Beaubien, Box 441, RR 2, Orleans, Ont., K1C 1T1.

## SLIDE PROGRAMS

The R.P.S.C. maintains a library of more than 125 slide programs. During the past six months five new programs and one audio visual program have been added. These are;

No. 49 Canadian Postal Stationery 1953-1960, 27 slides by Douglas C. Irwin.

No. 52 Canadian Postal Stationery 1954-1960 (2), 27 slides by Douglas C. Irwin.

No. 62 Canadian Postal Stationery, 1960-1964, 31 slides by Douglas C. Irwin.

No. 63 Canadian Postal Stationery, 1964-1968, 44 slides, by Douglas C. Irwin.

No. 64 Canadian Postal Stationery, 1967-1975, 57 slides, by Douglas C. Irwin.

No. 120 Centennial Special Order Stationery, 30 slides, by Douglas C. Irwin.

No. AV-I L'ami affranchi - Keeping you posted on stamps (bilingual) audio-visual.

Slide programs are available to chapters at a cost of \$7.00 a program. This represents our postage and packaging costs. For more information and a complete list of programs available write to Mr. Beaubien at the above address.

## VOLUNTEERS NEEDED

We have asked for volunteers before and have always been successful in securing help.



Previously it was for assistance in translation work. At this time we are looking for one or two individuals who are philatelists with perhaps some knowledge of photography and who could take two or three slide programs and refurbish them. Many of our programs are showing signs of wear and tear. Some slides require replacement, some require new information to be added or obsolete information removed.

If you could assist in refurbishing some of the programs please drop a note to Mr. Beaubien or to myself.

### AFFILIATES

In 1984, the R.P.S.C. set up a separate membership category known as affiliates. Unlike chapters which are generally local stamp clubs in a city or community, affiliates are much larger, of a provincial, national or international stature. Most affiliates are large societies in their own right, most have a publication and have members in different countries.

There are a number of reasons why these societies wish to become affiliated with a national society. One is to come under the umbrella of the F.I.P. (Federation Internationale de philatelie), the international organization is responsible for setting standards for international exhibitions and the rules for participation. Accreditation of exhibitions organized by the affiliate may be secured so that award winners qualify for international competition. Access to a greater pool of potential new members is another.

Over the past few months we have received a number of enquiries and expect to report more new affiliates in the future. Dues for affiliates are \$25 Cdn per annum. All affiliates as well as chapters receive our Journal, *The Canadian Philatelist*.

Any group wishing more information on affiliates or wishing to receive an application form should write to the National Office or the the writer. □

## The Golden Scroll

It is remarkable how long some of our members have been members of the Society. The computer in our National Office scanned our membership list with the result that we are able to list the following longtime members in numerical order. Any member with a membership number less than 3610 joined the RPSC before 1945. The loyalty of these members to the Royal Philatelic Society of Canada and to philately does not go unnoticed. On behalf of all the directors, officers and members we extend congratulations and sincere best wishes to each and everyone.

RPSC. 412HL	C.W. Baines	Kingston, Ont.	Hon. Life Member
1288HL	Neville S. Spence	Ottawa, Ont.	Hon. Life Member
3215L	K. Bileski	Winnipeg, Man.	
3238	George S. Wegg	Toronto, Ont.	
3378	J.H. Benjamin	Montreal, Que.	
3385	Brig. Gen. George B. Robertson, F.R.P.S.C.	Halifax, N.S.	
3425	W.N. Affleck	Belleville, Ont.	
3448	N.A. Peatman	St. Joh, N.B.	
3491L	H.G. Walburn	Kelowna, B.C.	
3530	Richard P. Hedley	Hamburg, N.Y.	
3559	Colin Bayley, F.R.P.S.C.	Ottawa, Ont.	
3561	Dr. C.Y. Hopkins	Rockcliffe, Ont.	
3602	G.C. Baugild, F.R.P.S.C.	Halifax, N.S.	
3604	Everett N. Drake	Toronto, Ont.	
3608L	Dr. Norman Boyd, F.R.P.S.C.	Windsor, Ont.	



# BUYING POSTAL HISTORY

## SERIOUS BUYER

OF QUALITY WORLD WIDE COVERS AND POSTAL  
STATIONERY USED TIL 1925.

OUR 22nd YEAR  
BUYING

### AREAS NEEDED AT PRESENT

Canada - til 1900  
German States - til 1890  
Japan - til 1920  
China - til 1900  
Turkey - til 1925  
Portugal - til 1900  
French Colonies - til 1895  
Portuguese Cols. - til 1910  
Italian Colonies - til 1910  
British Africa - til 1900  
Scandinavia - til 1910  
All Multicolor  
Advertising Covers

ALWAYS INTERESTED IN  
PURCHASING QUALITY  
STAMP COLLECTIONS

◆  
IMMEDIATE PAYMENT

◆  
ABSOLUTE DISCRETION

### HOW TO SELL YOUR COVERS

Send all via registered  
air mail with your asking  
price or for my offer. Include  
your phone no. and within 1 day  
of receipt I shall contact you. All  
shipments will be held intact  
pending our agreement of price. I  
will travel anywhere to view and  
purchase large holdings but  
kindly send photostats  
to provide an incentive.  
Payment will be made according  
to your instructions,  
in any currency.



# Andrew G. Holtz

P.O. Box 5430, Station A, Toronto, Ontario, Canada M5W 1N6  
(416) 231-2555

AMERICAN STAMP DEALERS ASSOCIATION  
PHILATELIC TRADERS SOCIETY  
AMERICAN PHILATELIC SOCIETY-LIFE MEMBER

MEMBER  
BRITISH NORTH AMERICAN PHILATELIC SOCIETY  
ROYAL PHILATELIC SOCIETY OF CANADA

CANADIAN STAMP DEALERS ASSOCIATION  
CANADIAN PHILATELIC SOCIETY OF GREAT BRITAIN  
COLLECTORS CLUB OF NEW YORK



## Fellows of the Society

# Colin H. Bayley, M.B.E.

by Beverlie A. Clark, F.R.P.S.C.

**Colin H. Bayley, M.B.E.**  
Membership No. 3995

Colin Bayley, a resident of Ottawa, long time member, and a former director of the Society, was elected as a Fellow in 1968.

Colin was born in Barbados, in 1901, to which his ancestors had emigrated from England in the early 1600s. At the early age of eight years he began his stamp collecting hobby by collecting the British West Indies. Since then his philatelic interests have covered a wide range, having collected the 1859s, Large and Small Queens, the postal history of the Ottawa Valley towns, and Squared Circles and Flag cancellations. Throughout the years his exhibits have won many awards. He also has done considerable writing which has been published in a number of major philatelic journals. And, as one would suspect, he still collects his first interest — the British West Indies.

Besides being elected a Fellow of our Society, he is also a Fellow of the Royal Philatelic Society, London (England), a charter member of the British Caribbean Study Group, and a member of a number of other societies.

A highly respected person in the scientific community as well as the philatelic community, his scientific career spanned over six decades, having achieved 60 years of membership in The Textile Institute (a worldwide organization) in 1987.

He received his early education in Barbados and won The Barbados Scholarship in Science in 1920. In 1921 he came to Canada to attend the University of Toronto. He took an honors degree in chemical engineering and did post-graduate work. In 1930 he joined the Chemistry Division of the National Research Council of Canada. In 1943 he was sent to Britain at the request of the Ministry of Supply to take part in the development of rotproofing which had



*Colin H. Bayley, M.B.E.*

become of great importance with the spread of the war to the wet tropics. For his research work during World War II he was awarded the M.B.E. (Member of the Order of the British Empire).

---

When you patronize our  
advertisers, tell them you  
saw their ad in  
The Canadian Philatelist

---



# **IF YOU ENJOY STAMP COLLECTING, .....visit "WEGG'S"!**

**WANT TO START A NEW COLLECTION?...WE HAVE ONE OF THE LARGEST STOCKS OF WORLD-WIDE STAMPS IN CANADA, FROM CLASSICS TO MODERN, FOR YOUR INDIVIDUAL SELECTION.**

**COLLECT COVERS OR POSTCARDS?...OUR STOCKS WILL PROVIDE MANY HOURS OF PLEASURE..."PULL UP A CHAIR" AT OUR COUNTER, AND ENJOY!**

**PHILATELIC SUPPLIES?...OUR SELF-SERVE DISPLAYS OF ALBUMS, MAGNIFIERS, TONGS, MOUNTS, STOCK SHEETS, & OTHER ACCESSORIES WILL PLEASE YOU!**

**BUILDING A LIBRARY?...ENHANCE YOUR COLLECTING PLEASURE! OUR WORLD-WIDE STOCKS OF PHILATELIC LITERATURE ARE EXTENSIVE, & ATTRACTIVELY DISPLAYED FOR YOUR SELECTION.**

**TIME TO SELL A PORTION OF YOUR COLLECTION?...WHY NOT DISCUSS THE VARIOUS METHODS OF DISPOSAL WITH US. OUR PROFESSIONAL EXPERTISE & FACILITIES ARE AT YOUR SERVICE.**

**NEED ASSISTANCE OR INFORMATION?...OUR COURTEOUS & KNOWLEDGEABLE STAFF WILL BE HAPPY TO HELP!**

## **ENJOY A VISIT TO "WEGG'S"... THE STORE FOR STAMP COLLECTORS!!**

(CONVENIENTLY LOCATED IN DOWNTOWN TORONTO)

---

# **George S. Wegg Limited**

**36 VICTORIA STREET  
TORONTO, CANADA M5C 2N8  
Telephone: (416) 363-1596-7**

**TRADE INQUIRIES WELCOME**





# Canada's 15¢ Large Queen And Its Postal Usages

by George B. Arfken

## Letter Mail to the United Kingdom

The Post Office Department Circular No. 1, dated January 16, 1868, announced a reduction in the postal rate for a letter to the United Kingdom via New York from 17¢ per half oz. to 15¢ per half oz. The circular cited a reduction in the U.S. transit fee to 4d stg = 9¢ per 4 oz. (bulk weight). Mail steamships would leave New York for England every Wednesday by Cunard line, every Thursday by Bremen line, and every Saturday by Inman line. (Actually almost all of this 15¢ mail to England would go on the Cunard line.)

Department Circular No. 1 continued with *"Postage Stamps representing the new 15 cent Packet Rate will be issued as soon as they can be prepared."* This stamp would be the 15¢ Large Queen and paying the 15¢ rate to the U.K. via New York would be its primary usage. Figure 1 shows a 15¢ Large Queen stamp cancelled with the 2-ring 10 of Sydney, N.S.

The official date of issue of the 1¢, 2¢, 3¢, 6¢ and 12½¢ Large Queens Large Queens was April 1, 1868. H.W. Duckworth and H.E. Duckworth (1) cite nine examples of use of the 15¢ Large Queen before April 1. They give February 22, 1868 as the date of issue of the 15¢ Large Queen. The 15¢ Large Queens were released early to satisfy the new rate to the U.K. in accordance with the promise of Department Circular No. 1. Figure 2 presents an example of pre April 1868 usage: a 15¢ Large Queen cover to England dated March 28, 1868. The cover, endorsed "Paid by U.S. Mail", went via New York and was carried on the Cunard liner "Java".

This 15¢ via New York rate lasted less than 24 months. A NOTICE TO THE PUBLIC dated December 30, 1869 contained the words (referring to letters to the United Kingdom) (2): *"If sent, prepaid, via New York, 8 cents per*



Figure One: Canada's 15-cent Large Queen

*½ oz. weight."* So the primary use of the 15¢ Large Queen disappeared January 1, 1870 when the rate to U.K. via New York was reduced to 8¢ per half oz. The effect on the postage required for a letter to the United Kingdom was a reduction of almost 50%. The effect on the quantity of 15¢ Large Queens needed was even larger. For the year ending in June 1869, 171,100 15¢ Large Queens were issued to the post offices (3). For the year ending in June 1871, the number was 46,250 a drop of 73%.

The 15¢ Large Queen continued to find some use in the make up of higher rates. Figure 3 shows a double rate, registered cover from St. Catharines, Ont., June 18, 1870, to Scotland. The 15¢ Large Queen and other stamps on the cover paid double the 6¢ Canadian packet rate plus the 8¢ registry fee. The stamps are cancelled with the 2-ring 12 of St. Catharines.





Figure Two: One of the earliest 15-cent Large Queen covers to the U.K. Posted at Forthill, C.W., March 28, 1868, the cover was carried on the Cunard steamer, Java.

#### Pre-Universal Postal Union Letter Mail

Although the 15¢ rate to the U.K. vanished on January 1, 1870, rates to some distant British possessions and to some foreign countries were high enough to provide a continuing use for the 15¢ Large Queen. Figure 4 illustrates a cover to India with two 15¢ Large Queens paying a 30¢ per ½ oz. rate. The cover was posted in Cobourg, Ont., May 26, 1870. The cover is

probably overpaid 8¢. The Duckworths have found convincing evidence that Canadian rate to destinations reached via England (France excepted) were reduced in February 1870 (1). The 15¢ Large Queen on the right is cancelled with the 2-ring 29 of Cobourg but the stamp on the left appears to be cancelled with a 2-ring 20, assignment unknown. Why the two cancellations should be different is not clear.



Figure Three: Double six-cent Canadian packet rate plus eight-cent registry fee. The 15-cent Large Queen helped pay the 20-cent total. Mailed at St. Catharines, Ont., June 18, 1870, it was probably carried on the Allan Line packet, Prussian.





Figure Four: Two 15-cent Large Queens paid the 30-cents per half ounce rate to India. From Cobourg, Ont., May 26, 1870, it was carried to England on the Allan Line packet, Scandinavian. The large manuscript '9' is a British claim. Courtesy of William E. Lea.

Postal rates to France in the early 1870s had a most unusual structure — because of British and French use of  $\frac{1}{4}$  oz. basic weight (10 grams) (4). The letter rate was 10¢ for the first  $\frac{1}{4}$  oz. and 6¢ for the second  $\frac{1}{4}$  oz. Figure 5 shows a cover to France from Quebec, C.E.,

dated September 25, 1874, with a 16¢ rate paid with a 15¢ Large Queen and a 1¢ Small Queen. The British transit stamps are red and the French transit stamp is black. There is a shipping endorsement: per "Sarmation".

Figure 6 shows a cover from Quebec, C.E.,



Figure Five: A 15-cent Large Queen and a one-cent Small Queen paid 16 cents on this cover to France from Quebec, C.E., Sept. 25, 1874. The fee was 10 cents for the first one-quarter ounce and six cents for the second quarter-ounce. Carried to England on the Allan packet, Sarmatian.





Figure Six: From Quebec, C.E., June 13, 1873, to Sweden, a 15-cent Large Queen and a one-cent Small Queen paid 16 cents. Actually overpaid by two cents, it was carried on the Allan packet, Hibernian. The Large 2 1/2d is the British accountancy mark. The 'PD', a British transit mark, means paid to destination. Both marks are in red.

June 13, 1873, to Sweden with a 16¢ per ½ oz. rate paid with a 15¢ Large Queen and a 1¢ Small Queen. Actually the rate to Sweden had been reduced from 16¢ to 14¢ per ½ oz. in October 1872 some eight months earlier. The cover was overpaid 2¢. Such overpayments, while not common, were not rare in 19th century Canada. Stulberg has written (5):

*One of the greatest misconceptions that postal*

*historians must overcome is the inveterate feeling that postmasters of the nineteenth century were both infallible and honest.*

There is no question of honesty here but, from the overpaid covers of Figures 4 and 6, it does look as though the postmasters were indeed fallible.

Figure 7 shows a 15¢ Large Queen helping pay a 28¢ rate to Buenos Aires, Argentina via



Figure Seven: Paid 28 cents to go to Argentina by way of England, this cover was instead forwarded via New York. Posted at Charlottetown, P.E.I., Oct. 18, 1873.





Figure Eight: Paid 24 cents to go to Brazil by way of England. Red London transit stamp. From Toronto, Ont., May 6, 1877, the cover was unclaimed in Brazil and returned to Canada.

England. From Charlottetown, P.E.I., October 18, 1873, the New York transit stamp shows that the cover was sent via New York and U.S. packet. The rate for this routing was 21¢. The large (blue) 18 is the U.S. claim for 18¢. The docketed date on the cover, January 10, 1874, indicates that the letter was 84 days in transit. The next example did go by way of England.

Figure 8 depicts a cover from Toronto, Ont., May 6, 1877, addressed to Brazil. A 15¢ Large Queen and 6¢ and 3¢ Small Queens paid the 24¢ via England rate. At this time U.S. packet service to Brazil had collapsed and all mail to Brazil went via England.

The next pre UPU cover illustrates some confusion by either the sender or the postal clerk.



Figure Nine: From Hamilton, Ont., Nov. 24, 1877 to Shanghai, China. Apparently paid the 16 cents per half ounce rate for going via England. The "Via London, England", bottom of cover, was crossed out and the cover endorsed 'Via San Francisco', top left. The cover was unclaimed in Shanghai and returned to the U.S. Dead Letter Office.





Figure 10: A 15-cent Large Queen paid the triple UPU rate to England from Wapella, Assa., July 6, 1886. Registered with the required five-cents RLS.

From Hamilton, Ont., November 24, 1877, the cover (Figure 9) was addressed to Shanghai, one of the Chinese treaty ports. The cover was endorsed "Via London, England" and paid the 16¢ per ½ oz. rate with a 15¢ Large Queen and a 1¢ Small Queen. Via England meant crossing the Atlantic, a P. & O. (Peninsular and Oriental) steamer to India and other P. & O. steamers to Singapore and on to Shanghai. The U.S. route, railway to San Francisco, then U.S. packet to Japan and Shanghai was faster and only 8¢ per ½ oz. Probably because of the faster transit, the "Via London, England" was crossed out and the cover endorsed "Via San Francisco". The cover reached Shanghai. There is a Shanghai Local Post backstamp but there was no delivery. Unclaimed, the cover was returned to the U.S. Dead Letter Office.

#### Universal Postal Union

Canada adhered to the UPU rate schedule on August 1, 1878 (6) and most Canadian rates to overseas destinations dropped to 5¢ per ½ oz. Still, there were a few heavy covers that could use the 15¢ Large Queen. Figure 10 illustrates one such cover, a triple rate cover from Wapella, Assa., July 6, 1886, to England. The registry fee was paid with a 5¢ RLS.

#### Domestic Usage

In principle, the 15¢ Large Queen could have been used to pay a five-fold domestic rate. At least one such cover has been reported but usage of this sort must have been very rare.

Another source of high postal charges was the parcel post, 12½¢ per 8 oz. until April

1879, then 6¢ per 4 ox. (7). The Guy de Rivieres "Nineteenth Century Canadian Registered Mail" album in the National Postal Museum Library illustrates two registered parcel post wrappings with 15¢ Large Queens helping to pay the postal charges. The problem for collectors is simply that very few parcel post wrappings were saved.

In the mid 1890s a new use for the 15¢ Large Queen opened up. Bulk mailing receipts appeared. There had been a bulk mailing rate of 1¢ per lb. for incoming non British foreign newspapers and periodicals being remailed by Canadian news agents to subscribers. Incoming British newspapers and periodicals, which formed the great bulk of this type of mail, could be remailed free. Effective January 1894, British newspapers and periodicals being remailed became subject to this 1¢ per lb. bulk rate. This meant a large increase in the 1¢ per lb. bulk mail. About this time, possibly in response to this increase in bulk mail, a new system of payment was introduced. Rather than affixing the required stamps to a bundle of newspapers or periodicals, the stamps were affixed to a page of a booklet (8). Figure 11 pictures a bulk mail receipt with two 15¢ Large Queens helping pay for 33 pounds of newspapers or periodicals at the 1¢ per lb. rate. Toronto, Ont., April 9, 1895.

During the Small Queen era, 1870 - 1897, usage of the 15¢ Large Queen continued. The stamp served a need in making up a variety of high rates. At the same time it should be noted that there are many examples of high rate covers



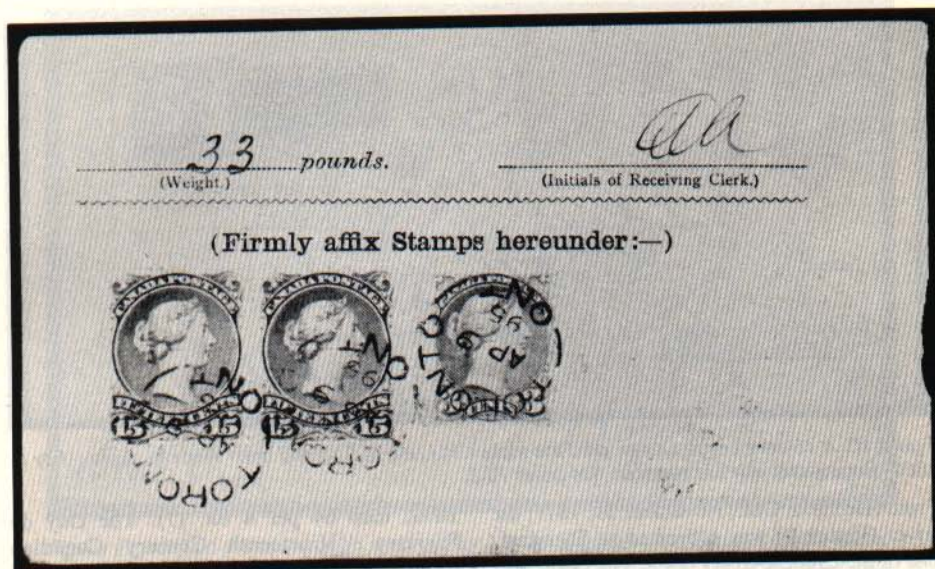


Figure 11: Two 15-cent Large Queens and a three-cent Small Queen paid 33 cents for 33 pounds of newspapers or periodicals at the one-cent per pound bulk rate at Toronto, Ont., April 9, 1895.

on which 15¢ Large Queens could have been used but weren't. One can only speculate about unavailability and other possible reasons for the lack of more use of this stamp.

### 15¢ Overseas Rates

There were a few special 15¢ rates that invited usage of the 15¢ Large Queens. Here we note three of these special rates.

(1) India, October 1880 - December 1882. India had joined the Universal Postal Union on July 1, 1876, over two years before Canada adhered to the UPU rate schedule. One might expect the postal rate from Canada to India to have been the standard UPU 5¢ per ½ oz. However, concern over the imagined cost of sending mail large distances overseas led first to a UPU sanctioned 10¢ per ½ oz. rate and then to a 15¢ rate. This was the UPU authorized surtax (9). Only one 15¢ rate-cover has been reported and it was paid with five 3¢ Small Queens. The 15¢ rate dropped to 10¢ per ½ oz. on January 1, 1883 and to the regular UPU rate of 5¢ per ½ oz. on January 1, 1892.

(2) Cape Colony, October 1878 - December 1889. This was a non UPU rate. Unlike India, the Cape Colony was outside the UPU and did not become a member until January 1, 1895. Canadian mail to Cape Colony went via the U.K. and by British packet to Cape Colony.

The rates were effectively determined by Britain. As with India, it seems that no 15¢ Large Queen covers have survived. The rate to Cape Colony dropped to 12¢ per ½ oz. on January 1, 1890 and to 5¢ per ½ oz. on January 1, 1892.

(3) The Australian Colonies and New Zealand. Again, these were non UPU rates. The Australian Colonies and New Zealand did not join the UPU until October 1, 1891. Here, there was a choice of routes; via the U.K., across the Atlantic or via the U.S., across the Pacific. Firth (10) illustrated in color two of the finest covers to Australia: (1) 22¢ to Melbourne across the Pacific and (2) 23¢ to Melbourne across the Atlantic, both dated 1868, both with a 15¢ Large Queen helping to pay the rate.

The 15¢ rates to the Australian Colonies (via the U.K.) and the periods when the 15¢ rate was in effect were:

- New South Wales, Queensland, and Victoria via U.K. Aug. 1878 - Sept. 1880.
- Tasmania via U.K. Aug. 1878 - Sept. 1882.
- West Australia, South Australia via U.K. Aug. 1878 - Sept. 1891.

There were brief, intermittent periods of a 15¢ rate to New Zealand and to various of the Australian Colonies via the U.S. in the 1870 - 1878 period. Regular 15¢ mail service via the U.S. (via San Francisco) began in April 1879.



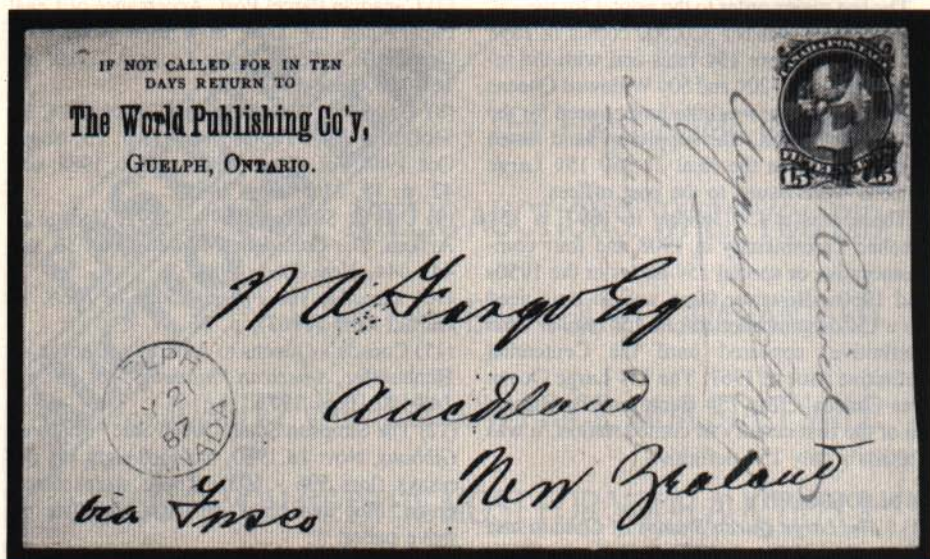


Figure 12: The 15-cents per half ounce rate to New Zealand was paid with a 15-cent Large Queen from Guelph, Ont., July 21, 1887. Note the route endorsement 'via Frisco' in the lower left corner.

Lasting almost 10 years, this period has provided most of the surviving 15¢ Large Queen covers to Australia and New Zealand. These 15¢ rates (via the U.S.) were:

- New South Wales, Queensland, Victoria and New Zealand via U.S. Apr. 1879 - Dec. 1888.
- Tasmania via U.S. Oct. 1882 - Dec. 1888.

An example of the 15¢ rate to New Zealand is shown in Figure 12. From Guelph, Ont., July 21, 1887, the rate was paid with a 15¢ Large Queen.

A few covers with multiple copies of the 15¢ Large Queen are known. All were from the World Publishing Co'y., Guelph, Ont. to W.A. Fargo, Esq., Auckland, New Zealand. These covers are part of a relatively recent find described by Henhoeffter (11).

The rates to the Australian Colonies and to New Zealand were reduced to 12¢ per ½ oz. January 1, 1889. The Australian Colonies and New Zealand joined the UPU on October 1, 1891 and the rates became 6¢ per ½ oz.

Supplies of the 15¢ Large Queen were adequate throughout the entire Small Queen era. Indeed, the 15¢ Large Queen, having appeared almost two years before the earliest of the Small Queens, proceeded to outlast all of the Small Queens. A 15¢ Small Queen die was prepared but the 15¢ Small Queen stamps were never

needed and were never printed (12, 13). So the die proofs are labelled "essays". Most essays are designs that were either incomplete or were rejected in favor of another design. This 15¢ Small Queen die was neither incomplete nor rejected in favor of another design. It was complete but it simply wasn't needed. Figure 13 shows a 15¢ Small Queen essay die proof, green on India paper.



Figure 13: The 15-cent Small Queen essay die proof.



The last major order to the printer for the 15¢ Large Queen was for 320,000 copies in 1893 (3). With no more 15¢ rates and with the introduction of the 20¢ and 50¢ Widowed Queens in that year, there was little further need for the 15¢ Large Queen. The supply on hand lasted until 1900 when the final 21,350 15¢ Large Queens were issued to the post offices.

There was a 15¢ Jubilee in 1897, a 15¢ Quebec Tercentenary in 1908 and four commemorative or special 15¢ issues in the 1950s and 1960s. However there was so little need for a 15¢ denomination that no 15¢ regular issue (definitive) appeared until the Centennial definitive issue of 1967. The 15¢ Large Queen was Canada's first 15¢ stamp and for almost all of the first century of confederation, it was Canada's only 15¢ definitive.

# BIBLIOGRAPHY

- (1) *"The Large Queen Stamps of Canada and Their Use 1868 - 1872,"* H.E. & H.W. Duckworth, Vincent G. Greene Philatelic Research Foundation, Toronto, 1986.
- (2) *The Postage Stamps and Postal History of Canada,* Winthrop S. Boggs, Chambers Publishing Co., 1945. Boggs' reproduction of this Notice on p. 31-B omitted this particular statement.
- (3) *A Large Queen's Report,* Hans Reiche, 1977.
- (4) Canadian Letter Mail to France, The Small Queen Era, 1870 - 1897, Maggie Toms and George B. Arfken, *BNA Topics* vol. 44, pp. 24-25, Sept.-Oct. 1987 et seq.
- (5) The Errors of Postmasters, Fred Stulberg, *BNA Topics* vol. 36, pp. 19-20, Mar.-Apr. 1979.
- (6) Canada Adheres to the Universal Postal Union, George B. Arfken, *BNA Topics* vol. 40, pp. 35-38, Mar.-Apr. 1983.

(7) Canadian Parcel Post, Acceptance of Legal Papers and the Date of a Rate Reduction, George B. Arfken, *Maple Leaves* vol. 19, pp. 151-153, June 1984.

(8) Canadian Postal Guide Illustrated, C.R. McGuire, *BNA Topics* vol. 41, p. 15, Sept.-Oct. 1984, vol. 41, p. 38, Nov.-Dec. 1984, vol. 42, p. 18, Mar.-Apr. 1985.

(9) U.P.U. Surtaxes 1878 - 1891, George B. Arfken, *The Canadian Philatelist* vol. 35, pp. 441-444, Nov.-Dec. 1984.

(10) *Canada, The Fifteen Cents of 1868,* L. Gerald Firth (1963), p. 26.

(11) Canada's Queens to Australia, George A. Henhoeffter, *American Philatelist*, vol. 89, pp. 140-142, Feb. 1975.

(12) The Simpson Small Queen Sale - Stanley Gibbons, Nov. 18, 1980, included eight 15¢ die essays (lots 596 - 603). There were claret, green, blue and black on india and slate on wove paper.

(13) *Essays and Proofs of British North America,* Kenneth Minuse and Robert H. Pratt, Essay - Proof Society, 1970, lists color and paper varieties of the 15¢ Small Queen essay die proofs. □

## WE OFFER

A retail store with over 250 stockbooks with German, European and worldwide stamps.

For the cover collector, we have over 20,000 covers, stationery and postal history items.

## CANADA - BNA

**Free illustrated price list  
on request**

We are always interested in buying foreign, Canadian covers, postal stationery, good quality stamps and collections.

Our store hours are: Tuesday to Saturday.  
9 a.m. to 6 p.m.

Sunday and Monday closed

## MANFRED WALTHER PHILATELIC, INC.

866 Kingston Rd.

Toronto, Ont. M4E 1S3 Canada

Telephone (416) 694-2333

Member: APS, BNAPS, CSDA, GPS, RPSC(L)

**WANTED**  
**Canadian Covers Pre 1960**  
**Stationery**  
**Have Same For Sale**

R.F. Narbonne  
Tel. 1 (613) 257-5453

**GREENWOOD STAMP COMPANY**  
216 Mailey Drive  
Carleton Place, Ont. K7C 3X9



# EASTERN AUCTIONS LTD.

THE FIRST NAME IN PHIL-  
ATELIC AUCTIONS. WHEN YOU BID  
WITH EASTERN YOU'RE GUARANTEED  
QUALITY VALUE & LOW PRICE. OUR STAFF WILL  
SEE TO IT YOU GET THE MOST FOR YOUR AUCTION \$.

- over 2000 lots
- singles
- covers
- large lots
- collections
- U.S.
- Canada
- British Commonwealth
- Newfoundland



and welcomed!!

## SATISFACTION GUARANTEED

Yes! Please rush me my **FREE** catalogue.

NAME: .....

ADDRESS: .....

**EASTERN AUCTIONS LTD.**  
P.O. BOX 250, Bathurst, N.B.  
E2A 3Z2 Canada  
(506) 548-8986

CP



# The Colonial Portion Of Canada — G.B. Mail Rates

by Allan Steinhart

A great change came about in 1840 in the mails between Canada and Great Britain with the commencement of the Cunard British Steamers regular sailings on the Liverpool-Halifax-Boston route.

Mails to Great Britain from Canada were now routed via Halifax by closed bags. The mail route to Halifax from Canada was long and rough, especially in winter, and this caused delays. More time was required than mails sent to Boston to connect with the Cunard sailings.

The problem was that if a letter was sent via Boston to go by Cunard, the full postage to Boston had to be prepaid and the ocean and British postage was collect. As an example, a letter from London, U.C. to London U.K. would be rated 1/2 Stg. - 1/4 Cy. by Cunard steamer via Halifax. For the same letter via Boston, the rate would be 9d Cy. plus 25 cents U.S. postage (1/3 Cy.) plus 1/0 Stg. collect ocean and British postage, a much greater charge.

This was outlined in a London GPO circular of February 1841 which stated letters to and

from Canada and the United Kingdom addressed via Boston were chargeable only with the 1/0 Stg. per half ounce, the United States plus colonial postage chargeable in addition.

As a result of a Treasury warrant of Oct. 11, 1843 of Great Britain, a circular was issued in Canada by Stayner, dated Dec. 1, 1843, and effective Jan. 5, 1844, noting that on letters between the United Kingdom and Canada, via the United States, the provincial charge was reduced to a uniform rate on a letter not exceeding a half ounce of two pence sterling or two pence, halfpenny currency from any part of Canada to the frontier line between Canada and the U.S. and vice-versa.

This was a substantial reduction in the postal charges. In the London-to-London example, the rate to the border was now 2½d Cy. instead of 9d provincial postage.

In Figure One, a cover date April 1844 from Montreal to England is endorsed via Boston and is rated according to Stayner's circular at PAID 2½, the colonial portion of the 1/2 Stg. - 1/4 Cy. rate per Cunard Steamer between Canada



Figure One





Figure Two

and Great Britain, plus PAID 18½ cents from the border to Boston. The cover was then carried by the Cunard Steamer Acadia, sailing May 1 from Boston on the return portion of her 19th voyage, arriving May 15 at Liverpool and rated 1/0 Stg. collect, the ocean and British portion of the 1/2 Stg. - 1/4 Cy. Canada - G.B. rate.

In Figure Two, the cover is dated in February 1844 and is also from Montreal to London, similarly rated prepaid 2½d Cy. and 1/0 Stg. collect. It was carried by the Cunard Steamer Hibernia to Liverpool from Boston on the return portion of her sixth voyage, sailing March 1 from Boston. In this case the rate was single in Canada and Britain but was rated as a double letter in the U.S. at 37½ PAID or double the 18½ cent rate. The cover is endorsed 'Paid to Boston'.

The cover in Figure Three is a little different. It is from Peterboro, U.C. to Manchester, England and is endorsed in a different hand than the writer's, probably the postmaster's, "Via Boston and Halifax". The cover is rated PAID 25 Cts, the United States postage equal to 1/3 plus 2½d Cy., the colonial portion of the postage, for a total of 1/5, 1/2 Cy. prepaid. The letter was carried by the Hibernia on the return portion of her 11th voyage, departing Boston March 1, 1845 and arriving at Liverpool March 17. A stylized 1/0 handstamp was applied in Liverpool, indicating 1/0 Stg. postage collect.

The cover bears an AMERICA/LIVERPOOL/Mr. 17/1845 datestamp.

This rating structure ended for all practical purposes with the start of the carriage of closed mails between Canada and Great Britain via Boston by Cunard Steamer at the 1/2 Stg. - 1/4 Cy. rate beginning with the sailing of the Caledonia from Boston on her 23rd voyage, May 1, 1845. From that date onwards, there was no practical purpose for this rating and routing as the closed mails now went via Boston. Some covers from the western part of Upper Canada still could save a few days if sent via the Niagara frontier but this rating after May 1845 is quite scarce.

The rating previously discussed is fairly scarce, having run from Jan. 5, 1844 to May 1, 1845, a very short period of time. After this time period, covers so rated are decidedly scarce.

The cover in Figure Four, is dated in March 1847 from Woodstock, U.C. in the western part of Upper Canada, to Edinburgh, Scotland, endorsed "via United States Mail". The cover is rated PAID 10 cts + 6 or 10 cents United States postage from the border to Boston, equal to 6d Cy. plus 2½ colonial postage of the 1/2 Stg. - 1/4 Cy. Canada-Britain rate. The cover was carried by the Hibernia on the return portion of her 21st voyage, sailing from Boston on March 1. On the reverse is an AMERICAN/



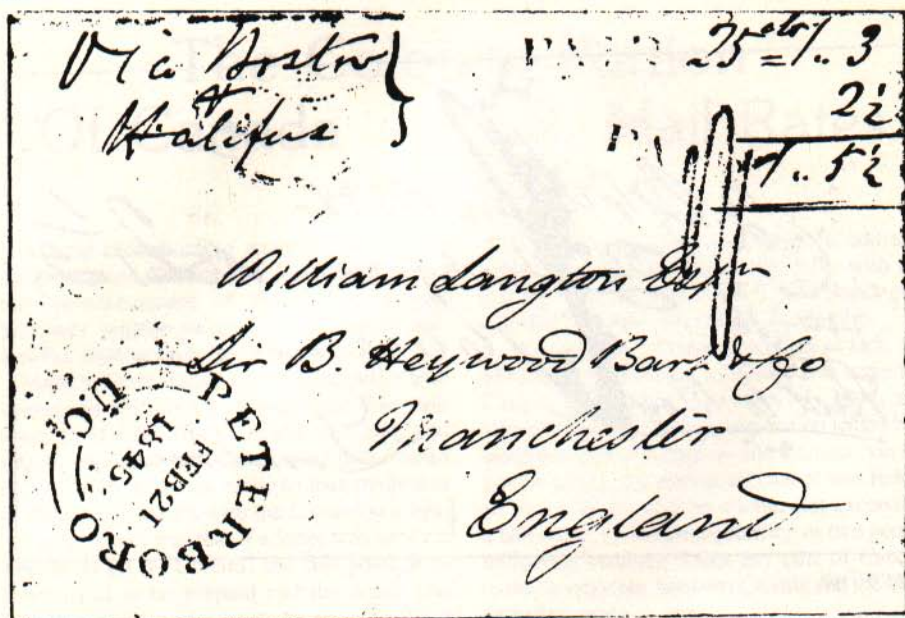


Figure Three

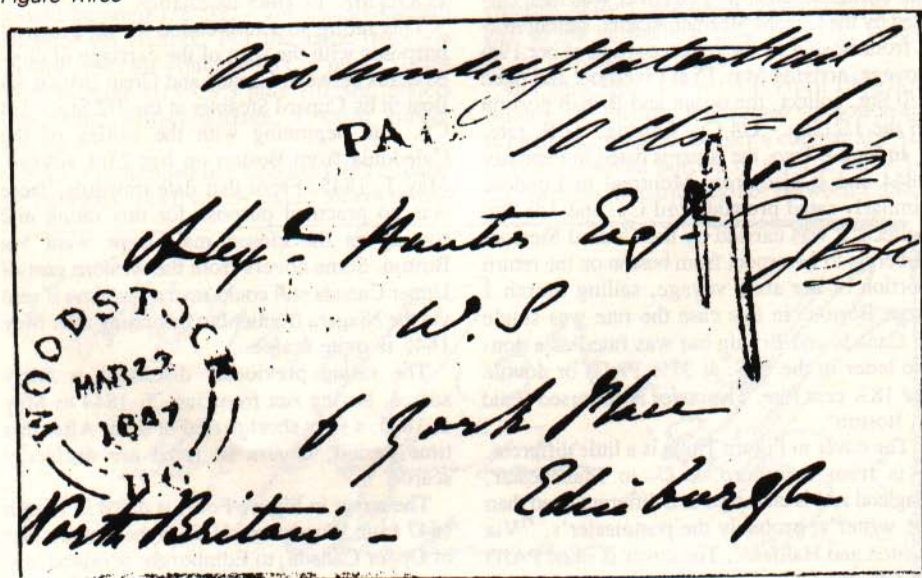


Figure Four

LIVERPOOL/AP 15/1847 datestamp and on the front of a stylized 1/0 handstamp indicating the 1/0 Stg. portion of the 1/2 Stg. - 1/4 Cy. postage collect.

The cover in Figure Five introduces a further element into this rating structure. Dated

in November 1850 from Toronto U.C. to England and bearing a red TORONTO NO 23, 1853 PAID datestamp, the cover is rated in red at 2 1/2, this being the 2 1/2 Cy. portion of the 1/2 Stg. - 1/4 Cy. Canada-Britain Cunard packet rate. It also has a Lewiston N.Y. datestamp of



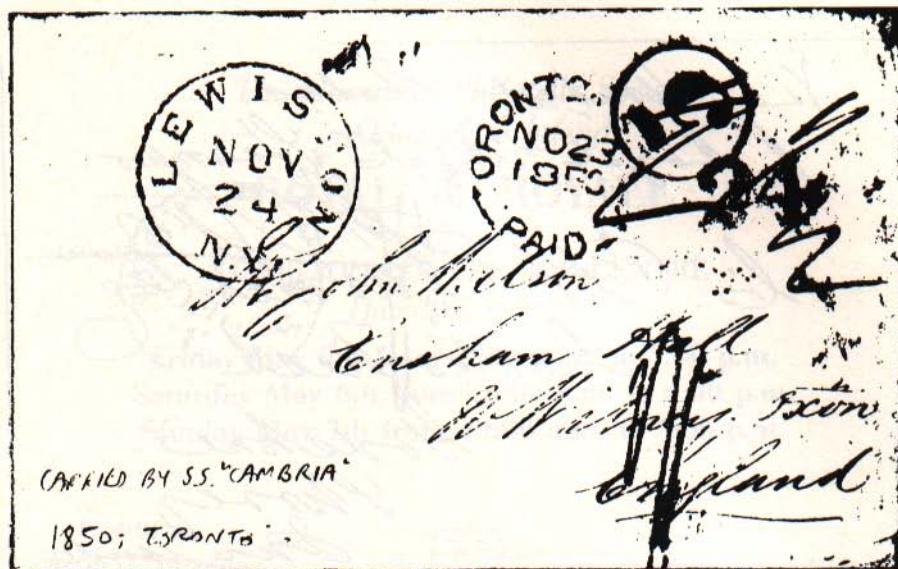


Figure Five

the border exchange post office and on the reverse side is an AMERICAN/LIVERPOOL/DE 11/50 datestamp.

The cover was carried by the Cunard British packet Cambria on the return portion of her 34th voyage and a stylized 1/0 handstamp was applied in Liverpool. What makes this different is that there is no U.S. postage charged from Lewiston to Boston. As a result of the treaties executed between the United States and Great Britain, which came into force at the beginning of 1848, the rate of postage between the U.S. and Britain was set at 24 cents U.S. or 1/0 Stg. British from any point in either country to the other, prepaid or collect. In this case, the rate per Cunard steamer from Lewiston, N.Y. on the border to the destination was 1/0 Stg. A black 5 handstamp was applied as an accounting mark, indicating five cents of the 24 cents or 1/0 was due to U.S. for internal postage from Lewiston to Boston. The 24 cents was divided as five cents U.S. postage, three cents U.K. postage, and 16 cents ocean postage. This cover represents an extremely unusual and rare rating structure for a letter to Great Britain from Canada.

The last cover, Figure Six, is even more unusual. As of April 6, 1851, Canada and the U.S. exchanged direct mails at the rate of 6d or 10 cents per rate paid or unpaid. Furthermore, a document entitled, Articles of Agree-

ment between the Post Office Department of the United States and the Post Office Department of Canada, noted that Toronto and New York exchanged mails directly and that "the offices designated for the dispatch and receipt of United States Mails on the side of Canada will stamp CANADA upon all letters sent into the United States for delivery". The cover is endorsed "via United States p Royal Mail Steamer". It bears a red TORONTO-CANADA - NO 28 - 1851 datestamp and a red CANADA arc. On the reverse is an AMERICAN/LIVERPOOL/DE 14/51 datestamp and the letter was carried by the Cunard Steamer Africa on the return portion of her ninth voyage, sailing from New York on Dec. 3, 1851. This cover bears a stylized Liverpool 1/0 handstamp, representing either the 1/0 portion of the 1/2 Stg. - 1/4 Cy. Canada-Britain rate or the 24 cent 1/0 Stg. U.S. - Britain treaty rate, which was the same. A black New York 5 DEC 3 datestamp was applied indicating an accounting of five cents due the U.S. for internal postage.

What is extremely confusing on this cover is the Canadian postage rate. The cover is marked in Toronto "4 cts" in red. If the Canadian postage to the border was charged, the rate would be 3d. If the colonial portion of the 1/2 Stg. - 1/4 Cy. rate was charged, the Canadian rate would be 2½d Cy. As there was a treaty



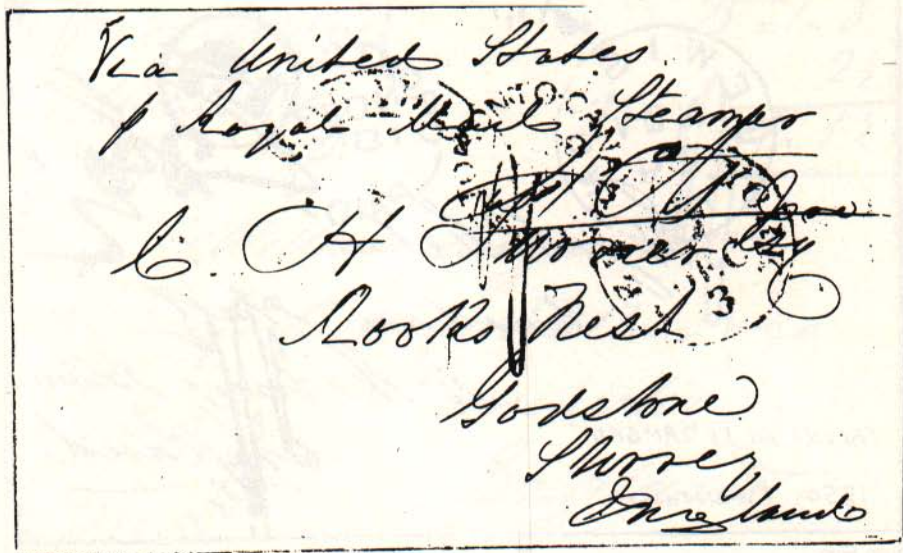


Figure Six

for Canada - U.S. postage and a treaty for Canada-Britain postage and this four cents does not fit either, it is still a mystery what the four cents paid and why. As well, the cents-dollar decimal system was not in use in Canada at this time; all postal rates were in pence. Is doubtful that with the sundry postal treaties in effect that the colonial portion of the postage charge system was still in effect, the four cents may have been so a postal clerk's interpretation of how to use the old system but it was likely incorrect and an ill-conceived attempt to fit some theory to fact.

This period of the 2½d Cy. colonial period

is quite interesting and ultimately much more difficult to find than the standard ratings and routings. ☐



## PUBLIC AUCTIONS

CATALOGUE  
ON REQUEST

- AT LEAST FOUR MAJOR SALES A YEAR.
- WORLDWIDE BUT FEATURING CANADA.
- STAMPS, COVERS, PROOFS, COLLECTIONS AND LOTS.

**PRIVATE TREATY** - with our Worldwide clientele, we can sell any property that is priced fairly in today's Market.

**COLLECTIONS PURCHASED** - Our interest is in better Canadian collections of Postal History, Cancels and Pre 1950 Stamps.

**RETAIL STOCK** - One of the largest stocks of British North America. Visit our downtown location or try our Approval Service.

(OUR 37th YEAR)

### JIM A. HENOK LTD.

185 Queen St. East • Toronto, Ontario, Canada  
MSA 1S2 • (416) 363-7757



## GEORGE WEGG

PHILATELIC CONSULTANT



CANADIAN REPRESENTATIVE  
FOR  
**CHRISTIE'S ROBSON LOWE**  
LONDON, ENGLAND

BOX 68, STATION Q  
TORONTO, CANADA  
M4T 2L7  
(416) 489-4683



*The Hamilton Philatelic Society  
invites you to attend*

## ROYAL '89 ROYALE

At the  
HAMILTON CONVENTION CENTRE  
*Hamilton, Ontario*

**Friday May 5th from 10:00 a.m. to 7:00 p.m.**  
**Saturday May 6th from 10:00 a.m. to 6:00 p.m.**  
**Sunday May 7th from 10:00 a.m. to 5:00 p.m.**

### Featuring:

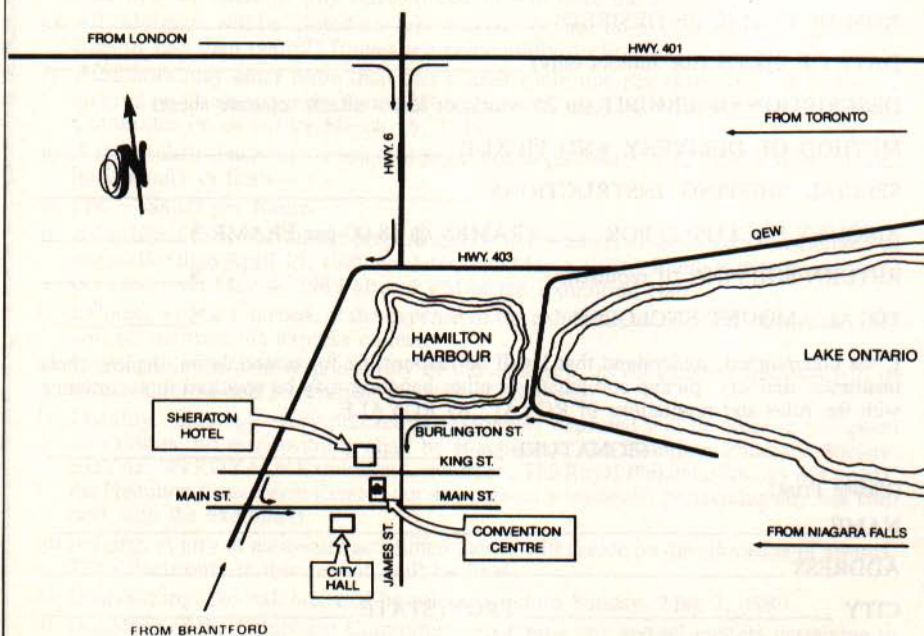
- 30 PLUS DEALERS
- EXHIBITS, SEMINARS
- YOUTH BOOTH
- CANADA & U.S. POST



Admission \$2.00  
(Seniors & Children  
under 12 Free)

### For Information Write:

P.O. BOX 9081  
STONEY CREEK  
ONTARIO, L8G 3X7



NOTE: VISITORS FROM TORONTO AREA: THE GO BUS STOPS RIGHT AT THE CONVENTION CENTRE.



## ROYAL '89 ROYALE ENTRY FORM

# ROYAL '89 ROYALE

## MAY 5TH - 7TH, 1989

This form must reach the  
Exhibition Committee no later  
than March 15, 1989.



HAMILTON CONVENTION CENTRE

Exhibits Chairman  
Royal '89 Royale  
P.O. Box 1082  
Oakville, ON  
L6J 5E9

Make Cheques  
Payable to:  
Royal '89 Royale

Kindly reserve for me \_\_\_\_\_ frames for ROYAL '89 ROYALE, May 5, 6, 7, 1989.

TITLE OF EXHIBIT \_\_\_\_\_

CLASSIFICATION OF EXHIBIT \_\_\_\_\_

SIZE OF PAGES \_\_\_\_\_

AWARDS PREVIOUSLY WON BY THIS EXHIBIT \_\_\_\_\_

NOM DE PLUME (IF DESIRED) \_\_\_\_\_

DATE OF BIRTH (for Juniors only) \_\_\_\_\_

DESCRIPTION OF EXHIBIT (in 25 words or less - attach separate sheet)

METHOD OF DELIVERY AND PICKUP \_\_\_\_\_

SPECIAL SHIPPING INSTRUCTIONS \_\_\_\_\_

AMOUNT ENCLOSED FOR \_\_\_\_\_ FRAMES @ \$8.00 per FRAME \$ \_\_\_\_\_

RETURN SHIPPING (if required) \$ \_\_\_\_\_

TOTAL AMOUNT ENCLOSED \$ \_\_\_\_\_

I, the undersigned, understand that I will be responsible for materials on display, their insurance, delivery, pickup and whatever other handling may be required in accordance with the rules and regulations of ROYAL '89 ROYALE.

SIGNATURE \_\_\_\_\_

(Please Print)

NAME \_\_\_\_\_

ADDRESS \_\_\_\_\_

CITY \_\_\_\_\_ PROV/STATE \_\_\_\_\_

POSTAL/ZIP CODE \_\_\_\_\_





# ROYAL '89 ROYALE

## Exhibition Rules & Regulations

- a) Classification of Exhibits
  - CLASS 1 - Canada & Newfoundland
  - CLASS 2 - Great Britain & Commonwealth
  - CLASS 3 - United States of America
  - CLASS 4 - Foreign
  - CLASS 5 - Postal History
  - CLASS 6 - Topical/Thematic
  - CLASS 7 - Juniors
- b) All entries shall be the bona fide property of the exhibitor, and the signature of the exhibitor on the entry form shall attest to that fact.
- c) All pages must be enclosed in protective transparent covers.
- d) Any exhibit may be reclassified or rejected by the Exhibition Committee and their decision shall be binding. Any rejected exhibit will have the fee refunded.
- e) All exhibitors will be allotted not less than two (2) nor more than ten (10) frames. Entries of less than two (2) frames are respectfully declined.
- f) Exhibitors may enter more than one exhibit (only one per class), but each must be entered on a separate entry form. All entry forms must be received by the Exhibition Committee on or before March 15, 1989.
- g) A frame shall consist of sixteen (16) pages not larger than 9" x 12" and will be mounted horizontally in fours.
- h) Fee - \$8.00 per frame.
- i) All exhibits to be forwarded prepaid and be in the hands of the Exhibition Committee not earlier than April 15, 1989 nor later than May 1, 1989. Exhibits may be delivered personally on May 4, 1989 after 4 PM at the Exhibition Hall.
- j) Exhibits will be returned, at the expense of the exhibitor, as directed, otherwise, they will be returned via express collect.
- k) Insurance is the sole responsibility of the exhibitor, as all exhibits received will be held, exhibited and returned at the risk of the owner.
- l) Liability: Although every precaution reasonably expected will be taken to safeguard all exhibits, no responsibility shall be attached to: The Hamilton Philatelic Society, ROYAL '89 ROYALE Exhibition Committee, The Royal Philatelic Society of Canada, the Hamilton Convention Centre, nor any person, whosoever, performing any task connect with the exhibition.
- m) Judging: A jury of nationally accredited judges will decide on the allocation of awards. Their decisions, in this regard, will be final.
- n) Dismounting: No exhibits will be released before Sunday, May 7, 1989.
- o) Decisions of the Exhibition Committee concerning any and all matters pertaining to ROYAL '89 ROYALE, shall be final.





# Royal '89 Royale May 5-7, 1989 Hamilton, Ont.



## Convention Registration

Registration for Royal '89 Royale entitles you to:

1. Admission to the President's Reception (Friday evening)
2. Convention banquet (Saturday evening)
3. Convention admission (for all three days)
4. Royal '89 Royale promotional package

Register before March 1, 1989 for \$45 per person (after March 1, 1989, registration is \$55 per person).

## Hotel Accommodation

Make your reservation with one of the following Hamilton hotels:

The Sheraton, 116 King St. West, 1-800-325-3535

The Royal Connaught, 112 King St. East, 1-416-527-5071

The Holiday Inn, 150 King St. East, 1-800-485-4329

A bank of rooms has been set aside for your reservation. Please mention Royal '89 Royale when booking your room.

To register for Royal '89 Royale, please fill out the form below and return to:

**Royal '89 Royale**  
**P.O. Box 9081**  
**Stoney Creek, Ont.**  
**L8G 3X7**  
**Att'n: Mel Campbell**

Registration \$55 (After March 1/89)

Pre-registration \$45 (Before March 1/89)

☐

Check One

☐

Number of tickets requested \_\_\_\_\_ X above rate = \_\_\_\_\_

Send to:

Name: \_\_\_\_\_, \_\_\_\_\_  
(Surname) (First name)

Address: \_\_\_\_\_

City: \_\_\_\_\_ Province \_\_\_\_\_

Postal Code: \_\_\_\_\_



# Women on Stamps: A Collecting Outline

by Betty Killingbeck

This topic is fascinating because the famous women honoured on stamps represent many diverse cultures, social stratas, careers and professions so that the collector learns not only about these outstanding personalities but is introduced also to the worlds of religion, visual and performing arts, literature, politics, sports, high adventure and others. Geography and history are absorbed pleasantly and painlessly. In other words, it is a many-faceted topic involving not only the study of the women themselves and the related philatelic materials but including other areas of research. The "Penny Black" from Great Britain makes the topic, along with Royalty, the oldest topic.

The lives of most of these women make interesting reading. Their achievements in the face of great hardships and opposition are truly amazing; their contributions to their own and today's societies are of vital importance. Many were pioneers:



Figure One

Marguerite Bourgeoys, founder of the first girls' school in New France (1);

Marie Popelin, first woman lawyer in Belgium, never called to the bar because of her sex (2);

Mrs. Banderanaikie, the world's first female Prime Minister (3);

Cecelia Grierson, the first woman doctor in Argentina (Scott 834);



Figure Two



Figure Three



Figure Four





Figure Five



Figure Six



Figure Seven

Dame Hilda Bynoe of Grenada, first native and first woman governor in the Commonwealth, (Scott 316, 318);

And of course, Valentina Tereshkova the first woman in space (4).

Among those who fought for women's rights were the Pankhursts in England (5), Nellie McClung in Canada (6), and Susan B. Anthony in the USA (7).



Figure Eight

A number of Nobel Laureates have been postally noted, the foremost being Marie Skłodowska Curie, the only winner of two Nobel Prizes, (8).



Figure Nine



Figure Ten

There are saints, sinners and adventurers such as St. Teresa, first woman Doctor of the Church (9), the notorious pirates Mary Read and Anne Bonney (10), Amelia Earhart who soloed the Atlantic and Pacific oceans (US C68) and Kwailan La Borde who circumnavigated the globe with her husband and child in a very small boat (Trinidad 346).



Figure Eleven



Figure Twelve

Women in the performing arts are well represented by operatic Soprano Dame Nellie Melba (11); actress Vivien Leigh (12), Jazz singer Ella Fitzgerald on Congo C145, Prima Ballerina Pavlova on Monaco 1347 and many others.

International Women's Year and the UN Decade for Women saw a proliferation of issues honouring native daughters such as Matilda Newport of Liberia (13) and international figures like Eleanor Roosevelt (14).





Figure 13



Figure 14



Figure 15



Figure 16

Recent years have seen the issuance of several omnibuses featuring British royalty occasioned by the Queen's silver jubilee, 60th birthday (15) and 40th wedding anniversary, the 80th and 85th birthdays of the Queen Mother (16) and the weddings of Prince Charles and Prince Andrew. Some of these stamps (17) depict lesser known "royals" who do not normally appear on stamps. For example, Cook Island shows the official 1947 wedding portrait of the royal fami-



Figure 17

Figure 18

ly and features 18 persons, including Princess Alexandra of Kent and Princess Andrew of Greece. A 40th Wedding Anniversary stamp from Dominica shows the central portion of this same portrait and includes bridesmaids princess Margaret and Princess Alexandra (18).



Figure 19

Royal events are also noted philatelically in other monarchies. Stamps were issued for both marriages of King Farouk while Iran commemorated all three of the Shah's weddings. The Netherlands marked the abdication of Queen Juliana and accession of Queen Beatrix. A beautiful set of mourning stamps was issued on the death of Queen Astrid following a tragic



Figure 20



accident (19). Thailand recently celebrated the 60th birthday of King Bhumipol Adulyadej with a large set featuring his entire family (20).



Figure 21



Figure 22

The Olympic Games and some professional sports have given rise to many issues featuring athletes, some of them questionable. Back in 1957 The Dominican Republic began issuing sets depicting Olympic medallists, none from that country. These included Tenley Albright, Ursula Happe and others. There were also miniature sheets. More recently Mary Lou Retton, the U.S. gymnast, is on stamps from Guinea Bissau and Paraguay. The name of Canada's Sylvie Bernier may be found on Gambia 575. Tennis stars Steffi Graf and Martina Navratilova (21) are on issues from St. Vincent and Sierra Leone. Two legitimate items would be Babe Zaharias, Olympic medallist and championship golfer on U.S. 1932 (22) and tennis star Cilly Aussem on Berlin 9N516A.



Figure 23

Real women on stamps fall into three main categories. First and foremost are those who by their own achievements or station in life are deemed worthy of recognition. This group has been discussed above.

Secondly there are women whose sole claim to fame is that they were portrayed by famous artists thereby becoming immortal when they would otherwise have died unknown outside their own immediate circles. Two obvious examples are da Vinci's "Mona Lisa" (23) and Helena Fourment, found in many Rubens commemoratives.

The third group comprises women who appeared accidentally like Susan Agnew, the American child model for the United Jewish Appeal poster, whose likeness reappeared on the Luxembourg semi-postals of 1950, (B 157, 159, 161) or those appearing incidentally because they happened to be in photographs later reproduced on stamps. These last would include the Duchess of Devonshire and the Queen's six attendants shown on some stamps of the 1977 Jubilee omnibus depicting the coronation ceremony, and the Cook Island and Dominica items already mentioned.

Since the topic is so wide in scope and philatelic materials so numerous (over 1,200 names and several thousand stamps and other elements) many collectors confine themselves to the first category. Here again, there is room for specialization. One may collect royalty, Jewish women, writers, feminists or whatever. The choice is endless.

In some instances it is possible to develop a theme around the life of one woman. The Virgin Mary, the Queen Mother and Queen Elizabeth II lend themselves very well to this type of study. Beside the huge number of stamps issued over many years, often depicting events as opposed to portraits, other philatelic elements are readily available; e.g. thematic cancels, postal stationery, booklets, covers, souvenir and miniature sheets. Harder to find are artists proofs and deluxe sheets. These may be very expensive and not necessarily desirable.

For those interested in a more general approach concerned with women's progress from the traditional and sometimes second class role to their accepted place in today's world with the rights to education, careers and to vote, there are many stamps portraying women in traditional dress (24) and others depicting domestic activities such as breast feeding, car-





Figure 24



Figure 25



Figure 26

rying water (25), pounding maize, hoeing, native crafts and so on, and as many more showing women in modern dress and in professions like medicine (26), operation of technical and scientific equipment, education and military service (27). These can be selected and used to develop the theme along with items featuring the related famous women.



Figure 27



Figure 28

A few enthusiasts collect women in mythology or from fiction. Greek, Roman and Nordic goddesses appear on many stamps as well as a few eastern deities (28). Fictional characters may be found on issues honoring Shakespeare, Dickens, Jane Austen and others.

## PUBLIC AUCTIONS

WORLDWIDE • SETS • SINGLES  
COLLECTIONS • LARGE LOTS

Always featuring Canada and B.N.A.

British Commonwealth and  
other worldwide countries.

Bid by mail or in person.

Write or call for a free catalogue of  
our next auction or information for  
consignors. (519) 681-3420

JOHN SHEFFIELD PHILATELIST LTD.,  
P.O. BOX 2014, LAMBETH, ONTARIO,  
N0L 1S0 CANADA





Figure 30



Figure 31



Figure 32

Finally, there is a growing number of female stamp designers and engravers of whom collectors are becoming aware. Research in this area is a real challenge. The lady who seems to be the most prolific is Jennifer Toombs of Great Britain who has designed over 200 issues for Commonwealth countries and is still working (30). Signe Hammarsten-Jansson designed some 170 Finnish stamps (31). Casimera Dabrowska has over 60 Vatican designs to her credit while Lu Tianjiao is a noted designer for the People's Republic of China. Heather Cooper and Debbie Adams are two Canadian



Figure 33

stamp designers. Heather did the flower definitives (32) and the recent 4H issue is by Debbie.

Probably the most famous woman engraver of stamps is Sweden's Majvor Franzen-Matthews with about 70 engravings on Swedish stamps (33). Cecile Guillame and Marie-Noelle Goffin of France do both designing and engraving (34), (35).



Figure 34



Figure 35

The writer knows of only one other Canadian philatelist collecting this topic, but is in touch with collectors in seven other countries through the Women on Stamps Study Unit, ATA. The sharing of information and friendships made through these contacts are two of the bonuses for unit members.

...

Betty Killingbeck is the President of Women on Stamps, a study unit of The American Topical Association. Their bulletin, *The Topical Woman*, is published bi-monthly. Dues are \$6 US for members in U.S.A. and Canada, \$8 US for members in other countries. For further information address enquiries to: Ario Scoggin, 1345 Sleepy Hollow Drive, Coshocton, Ohio, 43812, (U.S.A.). Please include an International Reply Coupon or 30 cents mint in U.S.A. postage. □

When you patronize our  
advertisers, tell them you  
saw their ad in  
The Canadian Philatelist



## WORLDWIDE STAMP & POSTAL HISTORY



# Schiff Auctions

**“Especially for Specialists®”**

## WE INVITE YOU TO CONSIGN

Individual stamps, covers or collections for Public Auction or Private Treaty Sale

## WE ALSO PURCHASE OUTRIGHT!

Contact us first, describing your material. Include your address and phone number



### UPCOMING AUCTIONS

**Auction No. 194**  
**January 19-21, 1989**  
**Collector's Club**  
**New York City**

**Auction No. 195**  
**March 1989**  
**Consignments now**  
**being accepted**

If you do not get our catalogues you are missing out! Send \$8.50 (\$12.50 overseas) for a year's subscription to catalogues and prices realized or send \$1.50 for our next auction catalogue and prices realized. (\$1.00 catalogues only).

Catalogues picked up at our office are complimentary.

## Jacques C. Schiff, Jr., Inc.

195 Main St. Ridgefield Park, NJ 07660-1696, U.S.A.

Telephone: 201-641-5566, From NYC: 662-2777

Only 4 miles from New York City

*Licensed & Bonded Auctioneers Established 1947*







## CHRISTIE'S ROBSON LOWE

### AUCTIONS IN FEBRUARY

**General Sale, February 1-2, Bournemouth**—back-of-the-book, issues, Cinderella, locals, revenues, forgeries, reprints, proof material related to Chalon issues, a major section of Military Mail, general foreign, Great Britain and British Empire collections. **Catalog \$6.**

**British Empire, February 7, London**—Gordon Kaye collection of Australian States, Noel Turner's New Zealand and an award-winning collection of Victoria formed by L. Baetgen. **Catalog \$8.**

**Great Britain, February 21, London**—specialized auction including line-engraved and surface printed issues, also 20th century issues. **Catalog \$8.**

**The Chalon Collection of New Zealand, February 22, London**—a major collection of the 1855-1872 issues with rarities; 1855 London Print 1p unused and superb used example; the 1855 1sh "Cancelled," also used on cover and bisected; a comprehensive study of the trial separations with many of the finest examples known. **Catalog \$8.**

British North American collections are regularly featured in sales held in New York, London and Bournemouth. Information about catalogs and consignment procedures may be obtained from each of the offices listed below. Our appointed philatelic representative in Canada, Mr. George S. Wegg, may be contacted locally for appraisals and sale information (Box 68, Station "Q," Toronto, M5T 2L7).

#### Christie's Robson Lowe U.S.

**Canada**  
94 Cumberland St.  
Toronto M5R 1A3  
Tel. 416-960-2063

502 Park Avenue  
N.Y., N.Y. 10022  
Tel. 212-546-1087

#### U.K.

8 King St., St. James's  
London SW1Y 6QT  
Tel. 01-839-4034





**Robert A. Lee Philatelist**  
Ltd.

presents

## **CANADA and B.N.A. AUCTIONS**

**OUR AUCTIONS REGULARLY CONTAIN  
SOME 2000 LOTS**

**INCLUDING THE FOLLOWING CATEGORIES:**

ADMIRAL ISSUE  
ADVERTISING COVERS  
AIRMAIL & FLIGHT COVERS  
AIRMAIL STAMPS  
ALBERTA POSTAL HISTORY  
BOOKLETS & BOOKLET PANES  
BRITISH COLUMBIA POSTAL HISTORY  
CENTENNIAL (1967) ISSUE  
CINDERELLA MATERIAL  
DEAD LETTER OFFICE  
DISASTER COVERS  
DUPLEX CANCELLATIONS  
EDWARD VII ISSUE  
EXHIBITION & FAIR COVERS  
FANCY, NUMERAL & SPECIALTY CANCELLATIONS  
1859 FIRST CENTS ISSUE  
FIRST DAY COVERS  
FLAG CANCELLATIONS  
FOREIGN COVERS  
FORGERIES  
INTERNATIONAL MACHINE CANCELLATIONS  
JUBILEE ISSUE  
LARGE QUEEN ISSUE  
LEGISLATIVE MARKINGS  
LITERATURE  
MANITOBA POSTAL HISTORY  
MAP (1898) ISSUE  
MAPLE LEAF ISSUE  
MILITARY POSTAL HISTORY  
MOON, MOTO & POCON CANCELLATIONS  
NASCOPIE POSTAL HISTORY  
NEW BRUNSWICK POSTAL HISTORY  
NEW BRUNSWICK STAMPS  
NEWFOUNDLAND POSTAL HISTORY  
NEWFOUNDLAND STAMPS  
N.W.T. POSTAL HISTORY  
NOVA SCOTIA POSTAL HISTORY

NUMERAL ISSUE  
OFFICIAL STAMPS  
OFFICIALLY SEALED STAMPS  
O.H.M.S. PERFINs  
ONTARIO POSTAL HISTORY  
PATRIOTIC COVERS & POSTCARDS  
PENCE ISSUES  
PERFINs (PRIVATE)  
PLATE BLOCKS  
POSTAGE DUE ISSUES  
POSTAL HISTORY COLLECTIONS & LARGE LOTS  
POSTAL STATIONERY  
PRECANCELS  
P.E.I. POSTAL HISTORY  
PROOFS  
QUEBEC POSTAL HISTORY  
QUEBEC TERCENTENARY  
RAILROAD POST OFFICES  
RATE COVERS  
REGISTERED COVERS  
REGISTRATION STAMPS  
REVENUES  
ROYAL TRAINS COVERS  
SASKATCHEWAN POSTAL HISTORY  
SEMI-OFFICIAL AIRMAILS  
SHIP CANCELLATIONS, MARKINGS & VIEWCARDS  
SLOGAN CANCELLATIONS  
SMALL QUEEN ISSUE  
SPECIAL DELIVERY STAMPS  
SPECIMEN OVERPRINTS  
SQUARED CIRCLES  
STAMP COLLECTIONS & LARGE LOTS  
STAMPLESS COVERS  
VARIETIES  
VIEWCARDS  
WAR TAX STAMPS  
YUKON POSTAL HISTORY

**CALL OR WRITE TODAY TO RESERVE YOUR CATALOGUE**

*Robert A. Lee* PHILATELIST LTD.

members A.P.S., B.N.A.P.S., C.S.D.A., R.P.S.C., P.T.S.

**#203 - 1139 Sutherland Avenue, Kelowna, B.C. V1Y 5Y2 • (604) 861-1106**



# Praga '88: System Of Marking Hurts Some

by Andrew Cronin

The author was the Canadian commissioner for this international philatelic exhibition held under FIP patronage in Prague, Czechoslovakia, from August 26 to September 4, 1988. It was extremely well-attended, with at least 200,000 visitors, including many from the neighbouring socialist countries. The results for the Canadian exhibits were as follow:

## **FIP Championship Class:**

Richard K. Malott: Pioneer Airmails of Canada.

## **Large Vermeil:**

Andrew Cronin: Postal History of the Carpatho-Ukraine.

William J. Liaskas: Ionian Islands.

## **Vermeil:**

Richard K. Malott: Crash Covers.

## **Large Silver:**

Alex Artuchov: *The Zemstvo Postage Stamps of Imperial Russia, Vol. 1* (literature).

Paul Burega: Newfoundland: The First Cents Issues.

## **Silver:**

Thomas W. Cummings: MacRobertson Air Race Covers.

David Dixon: Postal History of St. John, New Brunswick.

Clifford Guile: The Death of Money (German Inflation)

James Honnok: Post Offices of New Brunswick 1783-1930 (literature).

Edmund Walton: Imperf. Strubeli Issue of Switzerland.

Owen L. White: German Military Mail during the Boxer Rebellion.

## **Silver-Bronze:**

Mieczyslaw Lubinski: Military Censorship of the Russian Empire 1914-1917.

E. Richards Toop: Canadian Airgraph and Forces Air Letters WWII.

## **Bronze:**

Piet Steen: *The Latin American Post* (literature).

The somewhat disappointing results were certainly due to the application of the new marking system at FIP shows and which has not yet been widely publicized in Canada for the benefit of our exhibitors.

Our Czechoslovak hosts carried out conscientiously the new FIP regulations which apply to commissioners and which caused some dissatisfaction. At the official commissioners meeting, one member publicly observed that we work for two years putting the entries together to make an exhibition successful and get fewer amenities than the judges, who only work for five days. The judges also get their travel expenses covered, while commissioners must pay their own fares. Commissioners can no longer make an affirmation that an exhibit is of international standing and so we missed out on entering a truly excellent postal history exhibit from Canada. Your commissioner made affirmations for three first-time international exhibits for PHILAKOREA-84 and all three gained vermeil medals!

It would seem that the new FIP regulations also set out separate treatment for the jury members and commissioners. At PRAGA-88, the former were given a sit-down special dinner and the latter a special buffet. There were also separate excursions for the two groups and, apart from two private receptions for BULGARIA-'89 and PHILEXFANCE-89, the only time we were together was at the Palmarès.

Another point is that, under the new regulations, Canada has been given a quota to meet of 10 exhibits, excluding literature, otherwise a commissioner will not be granted his privileges at an international exhibition (paid hotel accommodation, per diem allowance for meals and tickets to various functions). While such a quota is generally not hard for us to achieve, there is at least one upcoming international exhibition where that figure may not be met by the



Canadian commissioner.

Also, FIP Regulation 26.2 stipulates that a commissioner must be met on arrival, helped through Customs with his/his exhibits, taken to the reception office of the show and then to the hotel. It then states that the same assistance should be given on departure. The last phrase is ambiguous and, to avoid misunderstandings, a commissioner is strongly advised to get a prior written confirmation from the Organizing Committee that they will take him/her back to the airport with the exhibits, medals and prizes and through Customs upon departure at the end of the show.

Because of the insurance laws in Canada, exhibits cannot go as luggage, as there will be no compensation paid if they are lost. They must personally be taken by the commissioner into the cabin of the aircraft and be under his/her surveillance at all times on the outgoing and return flights.

It can be seen from the foregoing that the duties and obligations of a commissioner constitute a great responsibility and should not be

undertaken lightly. Potential points of friction would be removed if the FIP ensured that the same per diem allowance be paid to both jury members and commissioners and that the latter would also have their travel expenses paid for them if they meet the quota of exhibits assigned for their respective countries. □

## CANADA 1900 TO DATE

1,000 mixed \$3.00.

Only higher values and Commems.

300 mixed \$4.00.

Newfoundland and British Empire

200 mixed \$2.00.

Approvals.

**W.N. Affleck**  
163 Alexandra St.,  
Oshawa, Ontario  
L1G 2C5



Every two months we publish

## THE SEA ISLAND TRADER

Our fully illustrated price list of pre-1953

## BRITISH EMPIRE POSTAGE STAMPS

in mint and used sets, significant singles and varieties of interest to both intermediate and advanced collectors. Write today for a complimentary copy of the next issue. If you like quality, you'll love what we have to offer!

## SEA ISLAND STAMPS LIMITED

P.O. Box 1339E, Station A,  
Delta, B.C., Canada, V4M 3Y8

OR

P.O. Box 268E,  
Point Roberts, WA, U.S.A. 98281



# REACH FOR THE BEST!



**MORE COLLECTORS ADD CANADIAN STAMP NEWS TO THEIR COLLECTIONS OVER ANY OTHER ... HERE ARE SOME REASONS WHY.**

- Canadian Stamp News is Canada's largest philatelic publication, bringing you the most complete, most authoritative and most timely news available.
- A bi-weekly section on Canadian and British Commonwealth stamps — with 11 authoritative columnists.
- Canadian Stamp News features stamps, postcards, postal history every other week.
- Up-to-date show and auction news.

**SEND IN THE ORDER FORM NOW AND SAVE!**

**SPECIAL TIME LIMITED OFFER 1 YR. FOR \$13.49**

That's **\$37.21** Off the single copy price.

Rates for USA 1 Year \$25.95

☐ Please use my Visa    ☐ Mastercard

New ☐ Renewal (attach mail label)  
(416) 493-4400 Fax # (416) 493-4703 1800-268-3374

My Name \_\_\_\_\_ please print

My Address \_\_\_\_\_

Street \_\_\_\_\_

City	State/Prov.	Zip/P.C.
------	-------------	----------

# Canadian Stamp News

10 TEMPO AVE.  
NORTH YORK, ONT  
M2H 2N8

UNI



# Rules for Thematics/ Règles Pour Thématiques

(Continued from Nov.-Dec. 1988)

(suite du dernier numéro)

## Art. 4 – CRITERIA FOR EVALUATING EXHIBITS

The previous paragraphs explain the principles of composition of the exhibit which correspond directly to the criteria for its evaluation. In order to avoid repetition, the comments on these criteria are therefore limited to some additional notes.

### 4.1 Plan and Size

The size will be evaluated by comparing the one of the exhibit with the potential one that can be achieved through a very comprehensive and complete plan and a thorough and deep development.

### 4.2 Development

To evaluate the originality of the thematic research, one must take into account previous studies of the theme, in order to see how much the development can take advantage of available thematic and philatelic literature, catalogues and documented research. This can be then compared with the personal research and study in terms of comprehensiveness, size and depth of the theme.

The thematic importance is expressed by the degree of difficulty of the development, on the basis of the scope of the theme and the related availability of the material.

### 4.3 Philatelic Knowledge

To evaluate the philatelic knowledge, within the possibilities of a given theme, importance is given to the presence of all the different philatelic types of material, and their relative balanced utilization. This relates in particular to the attention to old (pre-philatelic and classic) documents as well as to modern material, and to the use of items from different geographical areas.

Greater recognition should be given to material which

## Article 4 – CRITÈRES D'ÉVALUATION DES COLLECTIONS

Les paragraphes précédents expliquent les principes de composition d'une participation, ils définissent aussi les critères d'évaluation. Dans le but d'éviter des redondances, les commentaires concernant ces critères sont donc limités à quelques mots complémentaires:

### 4.1 Plan et ampleur

L'ampleur doit être évaluée en comparant celle de la participation avec celle que permet le thème à partir d'un plan complet, compréhensible et associé à un développement profond.

### 4.2 Développement

Pour évaluer l'originalité de la recherche thématique, on doit prendre en compte les études précédentes sur ce thème; les publications thématiques et philatéliques, et les catalogues auxquels peut se référer l'auteur. Cela doit être comparé avec la recherche personnelle tendant à rendre l'étude du thème ample, profonde et compréhensible.

L'importance thématique est reliée au degré de difficulté du développement, sur la base de l'étendue de thème et de la disponibilité relative du matériel.

### 4.3 Connaissances philatéliques

Pour évaluer les connaissances philatéliques, dans le cadre d'une thème donné, sont importants:

- la présence de tous les types de documents,
- leur utilisation équilibrée. Equilibre entre vieux documents (pré-philatéliques, classique) et documents modernes et autres documents venant de différentes régions géographiques.

La meilleure appréciation doit être donnée au matériel qui:



- has not yet been researched for that theme, or where there has been very little research
- refers to an uncommon area of collecting
- has a thematic qualification which is not immediately obvious and needs to be discovered by the exhibitor.

The philatelic importance of an exhibit is demonstrated by the degree of difficulty of the material available in terms of its philatelic significance. A development based on material of high philatelic interest (which does not necessarily mean of greater rarity) is more appreciated than one for which only common material is available.

#### 4.4 Condition and Rarity

The condition is based on the usual overall criteria of evaluation in philately. For modern material good condition is an essential requirement.

Cancellations must be clear, and allow the stamp design, where relevant, to be clearly seen.

The rarity is based on objective criteria such as quantity of issue, difficulty of acquisition and the presence of exceptional items.

It is essential that varieties, proofs, essays, strips, blocks, etc., are rarer than the original piece, in order to increase the philatelic level and to avoid the exhibit becoming just a specialized philatelic study.

It is obvious that items which, despite being very rare, have no or insufficient relationship to the theme, should not be included in the evaluation.

#### 4.5 Presentation

The efforts of the exhibitor are demonstrated by the arrangement of the items and the text on appropriate exhibition pages. White or pale-colored sheets, which do not detract from the material, are preferred.

Presentation techniques (e.g. the mounting and framing of stamps and documents) should be consistent and neat throughout the pages.

#### Presentation of material

An individual page shall not be overcrowded or too empty. In order to avoid overcrowding, it is sufficient, in principle, to show only one item out of a long set (stamp, or postal stationery, or cancellation, etc.) with the same design; the use of several items with exactly the

- n'a pas déjà été recherché pour ce thème, ou très peu recherché,
- est puisé dans un domaine très peu collectionné,
- a une valeur thématique qui n'est pas immédiatement perceptible et demande à être découverte par l'exposant.

On peut évaluer l'importance philatélique d'une participation en analysant la difficulté à se procurer le matériel. Un développement s'appuyant sur du matériel de haut intérêt philatélique (ce qui ne veut pas nécessairement dire grande rareté) est mieux apprécié qu'un développement pour lequel il n'existe que du matériel commun.

#### 4.4 Condition et rareté

La condition est basée sur les critères usuels d'évaluation en philatélie.

Pour le matériel moderne, une très bonne condition est évidemment requise.

Les oblitérations doivent être nettes et permettre, quand on doit le voir, une lecture facile du dessin du timbre.

La rareté est basée sur des critères objectifs comme la quantité émise, la difficulté d'acquisition et la présence de documents exceptionnels.

Il faut absolument que les variétés, les épreuves, les essais, les blocs, soient plus rares que la pièce originale de façon à élever le niveau philatélique de la participation tout en évitant qu'elle devienne une étude philatélique spécialisée.

Il est bien évident que des documents, même très rares, qui n'ont pas de relation directe avec le thème, n'ont pas à être pris en compte au cours de l'évaluation.

#### 4.5 Présentation

Les efforts de l'exposant sont démontrés par l'arrangement des documents et du texte, sur des pages d'exposition appropriées.

Pour donner plus d'importance aux documents, on préférera des feuilles de couleur blanche ou claire.

Les techniques de présentation (par ex.: le montage et l'encadrement des timbres et des documents) doivent se poursuivre tout au long des pages.

#### Présentation du matériel

Une page ne doit pas être surchargée ni trop vide. Pour ne pas surcharger les pages, il suffit en principe de présenter un seul document



same design should be limited to special circumstances, e.g.:

- reasons of symmetry
- balance in the text
- specific thematic significance
- philatelic significance

This does not apply when the same design is common to different types of material (stamps, and/or the imprint/the illustration of postal stationery, and/or special cancellations, etc.), or when the items belong to several countries.

Sometimes the same item can be used to make several thematic points (e.g. because of its secondary designs). It is suggested that, to avoid repetition, the item is shown in different conditions (e.g. single, variety, proof, on cover with a relevant thematic cancellation, etc.).

In the case of very common items, the overcrowding of the page with documents and postal stationery items can be avoided by showing the essential thematic and philatelic parts through cuttings in the page ("windows"). This often represents a viable alternative to the "cutting" of the documents.

Larger documents can sometimes adversely affect the thematic balance; it should be considered, therefore, if they present a greater rarity and condition than a single stamp or a cancellation on piece.

In principle, the overlapping of documents cannot always be avoided. The visual results are less disturbing for normal, commercial, service, and official correspondence, and in case of some themes (e.g. organizations, events, specific history, etc.) rather than others (e.g. artistic or esthetic themes).

The choice between mint or used stamps is left to the exhibitor. From a visual point of view, it is recommended that an exhibit consists of only one or the other. When this is not feasible because of philatelic reasons (e.g. a stamp which is by far rarer in the other condition), or of difficulty of acquisition, at least the mixing of mint and used stamps on the same page should be avoided. However, the inclusion of postally travelled items on a page does not imply that every stamp on the same page must be used.

Postal stationery can be shown mint or used, according to their philatelic importance and to the taste of the exhibitor. They must not be cut. Furthermore, the "windowing" of stationery items should be strictly limited to very

(timbre, entier postal ou oblitération) ayant le **même** dessin. L'utilisation de documents de même type ayant exactement le même dessin doit être limitée aux cas suivants:

- raisons de symétrie;
- équilibre du texte;
- significations thématiques spéciales;
- signification philatélique.

Cela ne s'applique pas quand le même dessin est commun à différents types de matériels (timbre, vignette imprimée ou illustration d'un entier postal et/ou oblitérations spéciales) ou quand les documents proviennent de pays différents.

Quelquefois, le même document peut illustrer des points thématiques différents (par ex.: avec des sujets secondaires). On peut alors suggérer que, pour éviter des répétitions, le document soit montré dans différentes conditions (par ex. variété, essais, sur lettre avec oblitération thématique appropriée, etc. ...).

Dans le cas de documents très communs, on peut éviter de surcharger les pages avec des documents ou des entiers en faisant des fenêtres pour montrer les parties thématiques ou philatéliques essentielles. De cette façon, on évite aussi la découpe des documents.

Les grands documents peuvent quelquefois, au contraire, affecter l'équilibre thématique. Dans ce cas, on doit estimer s'ils sont plus rares et en meilleur état que, par exemple, un simple timbre ou une oblitération sur lettre.

Le chevauchement de documents n'est pas, en principe, toujours à exclure. Mais il est moins ennuyeux, dans le cas de correspondances commerciales et de certains thèmes (par ex.: organisations, événements, histoire, etc. ...), que pour d'autres thèmes (artistiques ou esthétiques). L'exposant peut présenter des timbres neufs ou des timbres oblitérés mais, pour des raisons esthétiques, il vaut mieux montrer seulement l'un ou l'autre type de timbres. Quand cela n'est pas possible pour des raisons philatéliques (par exemple: inclusion d'un timbre plus rare dans un type que dans l'autre) ou à cause de difficultés d'acquisition, il est tout de même recommandé d'éviter de mélanger, dans la même page, timbres neufs et oblitérés. L'inclusion de documents avant voyage n'implique pas que tous les timbres de la page doivent être oblitérés.

Les entiers postaux peuvent être montrés neufs ou oblitérés en tenant compte à la fois de leur importance philatélique et des goûts du col-



common items selected because of their cancellation and should never be used when the item is shown because of its imprint and/or side illustration.

Only for justified philatelic reasons should the same stamp be shown single and on cover or card. In principle it is sufficient to present the latter, provided it has also a thematic cancellation.

Stamps used for describing the development should not be shown on documents without a relevant thematic cancellation, unless the document has a clear philatelic significance. The exhibitor should avoid showing covers where to many different stamps are not related to the theme (e.g. a set of which only one or two items are relevant).

### Text

The repetition of the title of the collection on each page is only a waste of space. The headings on the page should identify the arrangement according to the sub-divisions of the plan and summarize the content of the page; where necessary, this can be achieved by presenting more detailed sub-divisions. When a numbering system is adopted for the plan page, it should also be used throughout all the pages.

Photocopies or photographs of the reverse side of a document (showing e.g. the stamp imprint of postal stationery or postmarks) may be used if, only in this way, important information is presented.

Simply and effective maps and diagrams may be used in few exceptional cases as a supplement to the text, where they help toward a better understanding of the development and allow the text to be kept brief.

### Art. 5 – JUDGING

The Jury shall make full use of the points breakdown, as in Art. 5.2 of the SREV.

It is strongly recommended that the thematic Judges complete an evaluation form in order to be guided towards a thorough and consistent judgment.

The FIP Thematic Commission shall provide a reference form.

The presence of fake, forged or repaired items which are not clearly marked as such, will cause the downgrading of the exhibit. Collectors are therefore recommended to have any doubtful item expertized before selecting it for the exhibit.

(To be continued)

lectionneur. Ils ne doivent pas être coupés. Par contre, on peut utiliser des fenêtres pour les documents très communs qui ne sont exposés que pour leur oblitération (et pas pour la vignette imprimée ou l'illustration).

On peut présenter un timbre détaché et sur enveloppe (ou carte) si des raisons philatéliques le justifient. Mais, en principe, il suffit de le présenter sur enveloppe, pour autant qu'il ait reçu une oblitération thématique.

Les timbres utilisés pour illustrer le développement ne doivent pas être présentés sur enveloppe sans oblitération thématique, sauf si le document à lui seul, a une signification thématique. L'exposant doit éviter de présenter des enveloppes avec trop de timbres sans relation avec le thème (par exemple, une série complète dont seulement un ou deux timbres sont intéressants).

### Texte

La répétition du titre de la collection sur chaque page est une perte de place. Les écritures placées en tête de chaque page doivent se rapporter aux chapitres du plan et résumer le contenu de la page. Si cela est nécessaire, on peut y ajouter un sous-titre correspondant à une subdivision plus détaillée.

Les photocopies, ou les photos de l'autre côté d'un document (côté timbre pour les entiers illustrés, cachets) peuvent être utilisées quand cela rend plus compréhensible une information importante.

Des cartes ou des diagrammes (simples et explicites) peuvent exceptionnellement être utilisés comme compléments du texte lorsqu'ils permettent une meilleure compréhension de développement mais aussi lorsqu'ils permettent de raccourcir le texte.

### Article 5 – JUGEMENT

Le jury doit user pleinement du décompte des points, comme cela est indiqué dans l'Article 5.2. du SREV.

Pour que le jugement soit cohérent, il est fortement recommandé aux juges thématiques de compléter l'imprimé d'évaluation.

La Commission Thématique de la F.I.P. devra mettre ce type d'imprimé à la disposition des jurés.

La présence de faux ou de réparés qui ne sont pas clairement présentés comme tels, entraînera la rétrogradation de la participation. Il est donc recommandé aux collectionneurs de faire expertiser tous les documents douteux avant de les exposer.

(À suivre)









## The R.P.S.C. Junior Stamp Collector

by Art Holmes

3364-248 St. RR 4  
Aldergrove, B.C.  
VOX 1A0

### WASHING AND SORTING STAMPS A clean collection

One of the important aspects of stamp collecting is cleanliness. There is very little chance that disease germs are passed along with the licking of stamps being used for mailing, but that should not be dismissed as completely unlikely. However in the process of washing stamps about to be described in some detail the danger would be minimized.

The hobby does require a habit of maintaining a high degree of cleanliness. Hands should be washed free of any possible perspiration, which could leave grease-like markings on stamps, before beginning a session with your stamps or those of anyone else. Stamps placed in your album(s) should not have any paper or parts of old hinges on their backs. In other words — keep you stamp collection clean! Sometimes, especially if you have some old stamps, you should consult an experienced collector before you wash stamps that might call for additional care because of the fragil condition of a stamp. Remember to keep in mind what has been mentioned previously there are stamps which should be left on envelopes, to preserve the postal markings, dates or other significant features sought after by some collectors. Again, consult an experienced collector before removing stamps from these envelopes.

### Pre-sorting in readiness for washing

What we are about to discuss is the common everyday procedure of removing the paper from the back of stamps, often called soaking. Now your mother does something before she starts her washing or laundering of clothes and household articles, which you too must do before placing stamps in water. She sorts the clothes into piles — of white things and those requiring the first clean water, the darker materials into another pile, some of which may have some dyes which might tend to run, then

perhaps woolens and, of course, the real dirty work clothes, those which go into the washer for the last use of the sudsy water. Then there are those materials which might be better washed in cold water. So with stamps about to be washed they must be pre-sorted. Those from white envelopes can be placed in lukewarm water, **never** hot water, and only left for a short while, but just to the point where the stamp floats freely from the paper. Don't do any more than a few dozen to start with until you find you can handle more, so long as the last ones being removed aren't left in the water too long. Now, just as mother rinses the white materials and the other piles to remove the soap suds, you should rinse each batch at least once to be sure any trace of the gum from the back of the stamps is removed from the water.

It may be necessary to gently rub some stamps between your thumb and forefinger to make certain the gum has been washed off. Certain older Great Britain stamps particularly require a little more rubbing than others. This should be done with great care to prevent damaging the stamp.

It should be said at this point that some collectors and writers advocate that stamps should only be placed paper down on the surface of the water so that the face of the stamps don't become moistened. This is, presumably, because the inks used by some stamp printing companies are not stable enough to risk soaking in the usual way. Perhaps at a later date, if the information is forthcoming, this column could list those countries which have experienced this difficulty.

### Drying

At this stage you can proceed to place the washed stamps face down on absorbent (blotter-like) material such as paper towelling, newspapers (not shiny or colored print pages) or books. (Books do create or cause a problem in some instances; if the water you used for



washing has not been followed by a rinse water the gum in the solution may be enough to cause the face of the stamp to stick to the page covering the stamp when the book is closed, as is also the case when you use certain blotter books with a cellophane backing, sold for this purpose, causing irreparable damage to the stamps.) Leave them overnight under a chair on carpeted floors away from regular traffic causing a minimal of household disruption.

Next day they will have dried and will be fairly flat (any curled ones usually indicate that the gum was not rinsed off properly and you should go through the process again with these), and ready for sorting...

Now let's go back to the pre-sorting stage. You should have some other piles, besides the white envelope pile. One should be of kraft paper backing from parcels or envelopes of a sand to light brown coloring. These will need special attention as the dye in some of this paper is likely to color the washwater and stain the back of the stamps or other stamps in the same water so severely that the stamps so stained are not worth keeping. It is best not to take a chance with high denominational stamps; they might better be dealt with separately or one at a time.

COLD water should always be used for any colored paper backed stamps. It will take longer to soak them, but they should be removed at the right stage when they start to separate.

Never force the stamp from the paper as you may leave some of the paper from the back of the stamp on the backing and cause "thinning" damage. Only do a few at a time and take care with each individual stamp.

Some collectors add certain solutions to the wash water but we will not mention these at this time stage for fear they are misused. Such may prevent dyes from the paper causing stain damage, but these practices are used by the more experienced collector.

Another sorted pile might be those stamps on airmail envelopes with red and blue (and green) decorated edges. The dyes from these markings are perhaps the most difficult to deal with. This decoration should be torn away carefully from the stamp as closely as possible without damaging the back of the stamp. However, the harm may have already been done when the stamp was moistened and placed over these color markings at the time of mailing, the stain then being permanent.

The next pile could be those stamps on other colored backing, generally on green, red, yellow or other full-colored envelopes mostly used for Christmas greeting cards. If the stamps are of a common variety you would be well advised to discard them rather than attempt washing even in cold water. Just be sure none of these slip into any of the other piles.

If you are successful in washing any of the non-white backed stamps they should be dried in the same manner. By the way, be sure no one of the stamps on your drying sheets is touching another; sometimes they could be stuck together when dry — if so don't try to separate them, go through the washing step again.

Your last pile could be of those stamps where two or more are still joined by the perforation, such as pairs, blocks of four or other multiples. Most important of this group is the se-tenant groupings. (These will be discussed later, but at this time it should be mentioned that these are two or more different stamps from the same sheet, which should not be separated at the perforation when being washed, sometimes a difficult task.)

### **A second sorting**

When the stamps are dry you will want to start another sorting procedure. You will find some stamps which are damaged, either torn, clipped, creased, thinned or heavily post-marked. You may want to keep these to create a mosaic to form pictures or designs, gluing them to a sheet of heavy paper, overlapping them hiding the damaged portions. Signs for local exhibitions or posters can be made up this way, giving an opportunity for a junior club project.

Now the proper sorting begins. You will again place them in piles, either by country or theme (topic) such as birds, trains, famous people and so on according to your choice of topicals for one or more albums of your collection. If you have already obtained an album and have started hinging stamps you will want to check to see if any of these newly cleaned stamps are better specimens of what you already have or are needed for your collection.

If you do not yet possess an album it would be wise to put off your selection of albums until this subject is covered in this column. In the meantime you should be content to place these



newly acquired stamps in envelopes or in stock sheets or stock booklets. Any kind of envelopes will do for temporary storage. Glassine (transparent) envelopes are somewhat expensive, but generally preferred by most collectors for their organized boxes of spares or duplicates.

To start with you will find window envelopes, used or otherwise, of any size will be quite satisfactory until you decide on a proper system of arranging your duplicates or until you are ready to select the ones for your albums. Manila stock sheets (8½" x 11") can be kept in a 3-ring binder and are a suitable means of setting out your spares in a variety of arrangements for quick visual selection for your own use or for trading purposes. There are a variety of other types of sheets with glassine or acetate pockets. Costly acetate stock sheets are often used as album pages for collections.

### Excessive extras

When envelopes or stock sheets are full of the same stamp you may want to bundle them into lots of 50s or 100s, using a paper half-inch band gummed at the joint, or you may use plastic drawer cabinets with dividers. Here we would like to pass along a suggestion to those who admit to being accumulators.

Why not make up packets of stamps from your excessive supply of spares for distribution to young collectors?

Norm Holden, the prize-winning newsletter editor of the Fraser Valley Philatelic Club, advertises in several stamp periodicals for stamp bundles or packets, which he in turn sends out every few months to over 300 juniors who write in for a free assortment of 200 different world-wide stamps. Now this surely embodies the true spirit of philately. If you are so inclined, write to Norm at 3757 Harwood Crescent, RR #10, Abbotsford, B.C. V2S 6W8, sending along whatever you can gladly spare. Juniors should write in, asking for his assortment, enclosing a SASE for reply. Norm expects nothing in return.

...

### Junior club ideas

Philip Cove, the advisor of the Fort St. John, B.C. club, writes about their club meeting every other Saturday morning, which is run through the auspices of their Community Arts Centre. A letter is mailed to club members and their

parents at the beginning of the new season outlining the special features for each meeting. The members make up an exhibit for a community display cabinet a few times a year. What ideas have you to share with other clubs?

### My grandpa from Smugglers Cove says,

"...When I came from Europe many many years ago one of the few things I then carried with me was a stamp album with stamps from all corners of the world, but alas, with too many open spaces. Stamps are still very exciting for me and a challenge to find out about many things I might not have known otherwise. Stamp collecting can be thrilling for young and old. I think it is a good idea, Reva, to begin with a collection of stamps of your own country. Canada has produced so many interesting and beautifully designed stamps dealing with historical events, great personalities and matters of scientific, technical and artistic nature. I hope to tell you other things about stamp collecting. In the meantime I will have the pleasure to meet some young U.S. collectors on San Juan Island, Washington, to talk to them about stamps and the fun of collecting them.

Love, Grandpa Vernon."

### Interested in animal stamps?

Canada Post recently issued seven low-value definitive stamps in denominations of 1, 2, 3, 5, 6, 10 and 25 cents. Depicted on each of the new stamps is a small Canadian mammal. Included in the issue is a flying squirrel, porcupine, muskrat, varying hare, red fox, skunk and a beaver. If you want more details about these stamps and about the 32 commemorative stamps to be issued in 1989 send your request to be put on the mailing list to receive pre-issue pamphlets to Canada Post Corporation, Philatelic Service, National Philatelic Centre, Antigonish, Nova Scotia, B2G 2R8, and ask for the back issues of the pamphlets of the animal stamps.

### Pen pals

Many of lasting friendship has been developed between stamp collectors who started out as pen pals. If you wish to write to someone in Canada or another country write to the Juniors' editor enclosing a SASE (self-addressed, stamped envelope) giving your age and preference of country, boy or girl, language spoken and special interest, country and/or topicals, and what you have to exchange. □





# CANADIAN STAMPS

— Classic to Modern Issues —

**OUR SPECIALTY . . . THE UNUSUAL**

**IMPERFORATES-PROOFS  
MAJOR ERRORS**

OUR MONTHLY Catalogues Offer  
Canadian and Provinces issues . . . from #1 to date!

**COPY of our CURRENT CATALOGUE**

**FREE ON REQUEST**

**Call us TOLL FREE 1-800-667-6900**

## WANTED

**WE ARE SERIOUS BUYERS OF ALL BETTER CANADIAN STAMPS**

**CHOICE QUALITY CLASSICS**



**NEW DISCOVERIES**



What do **YOU** have to offer us?

**Call TOLL FREE 1-800-6676900**

**SASKATOON STAMP CENTRE**

**P.O. BOX 1870, SASKATOON, SASK., CANADA S7K 3S2**



# Postmarked OTTAWA . . . HANS REICHE

A  
REGULAR  
FEATURE

Perforation gauges have been discussed many times in several articles. All claim to be very accurate and new gauges still come on the market with supposed better accuracy.

The most accurate gauge which has ever been produced remains the Instanta gauge and its counterpart, one specially designed for the German building set, using the same principle.

The accuracy of these gauges has been determined scientifically and the error is less than 0.2% at the 10 gauge and less than 0.04% at the 16 gauge. A gauge offered some time ago for Small Queen specialists has an error of 0.4% at gauge 10 and at gauge 16 is an error of almost 0.5%. In addition the material used for the afore-mentioned gauges is a stable temperature plastic film with an almost zero temperature coefficient, over a temperature range from 8 to 25 degrees C.

...

Another philatelic tool is the ultra-violet lamp. Many modern stamps have been tagged for automatic sorting and the detection of these tags without a proper lamp is almost impossible. Unfortunately, each country makes use of a different tagging system and a single type of lamp may not always bring out the desired information. In addition the use of a wrong type of lamp may produce wrong information. Each type of tagging responds to ultra-violet exposure at a different frequencies.

It is therefore important that a suitable type of lamp be used for each application. Some lamps have more than one choice of exposure frequency and others can be varied over a certain range. When the light, which is invisible to the eye, strikes the tagging substance it will make the tagging glow and visible to the eye.

It is also possible to photograph a tagged stamp and ultra-violet films exist that can detect the tagging. Because the ultra-violet frequencies are comparatively high, care must be taken to avoid unnecessary exposure of the skin and eyes.

...

Few collectors get along without a magnifying glass. Details of stamps can often only be distinguished with a glass, for examples different dies. There are hundreds of magnifying glasses around but not all will do the job.

Most of the cheaper glasses have distortion, especially if larger areas of a stamp have to be examined. Plastic types scratch easily unless properly protected. Some excellent glasses are available which have little distortion and which have magnification from two to ten times.

Always use the lowest magnification first before going to the higher magnification because of possible eye strain.

Many of the better glasses have been manufactured in Europe.

...

No collection can be without album pages. The choice of pages is important. Ordinary paper contains acid and this will ruin your stamps, mint or used. Older collections show this clearly and stamps become brittle and brownish in tone from the acid.

The use of mounts has become very popular. They should be considered in the light of the ease with which a stamp can be removed from one without damage. Avoid mounts which are very tight and put pressure on the stamps. Also avoid using too much moisture to fasten the mount on the page; it will result in warping.

Completely closed pocket mounts should not be used.

...

Paper thicknesses play a major role. Many Canadian stamps can be found in several paper thicknesses and the price for different thicknesses may vary from a few cents to hundreds of dollars. The micrometer is the only instrument for properly measuring thickness.

One question which has never been fully answered is if a particular measurement applies to a mint or a used stamp. Gum certainly has its own thickness.

...



One of the most difficult problems is the identification and naming of a colour shade. This column has written about this a number of times, but there is no simple answer as most colour determining devices are based on complex, scientifically-structured systems.

...

A number of collectors have asked if someone will eventually publish a detailed handbook on the 1982-1988 Canadian definitives. Not only are there different printings, perforations but also there are a variety of papers and markings.

Modern issues are often neglected and by the time they are studied, the information is lost or difficult to reconstruct. □

---

SEE YOU AT  
ROYAL '89 ROYALE  
HAMILTON, ONTARIO  
MAY 5, 6, 7, 1989

---

## THE CANADIAN PHILATELIC SOCIETY OF GREAT BRITAIN

Membership Secretary:

**D.F. SESSIONS, F.C.P.S.**

**36 The Chimes, Nailsea, Bristol  
BS19 2NH England**

FOR ALL ASPECTS OF  
B.N.A. PHILATELY **£7.00 per year**

'MAPLE LEAVES'  
PUBLISHED FIVE TIMES  
PER YEAR

\*WRITE FOR SPECIMEN COPY\*



## 200 Different U.S. \$10 Value — **ONLY \$1!**

Here's your opportunity to get 200 different U.S. stamps — minimum catalogue value \$10 — for only \$1 (our cost)! This special collection is yours just for trying our select stamp approval service.

You'll examine better U.S. and/or better Canada in your own home for a **FREE** 10-day trial period. Buy only those you like, return the balance **AND** get a valuable bonus every time you buy a complete selection! There is absolutely no obligation — you can cancel service anytime.

For your collection and approvals, send \$1 now to:

**Collectors Choice**  
Dept. X1, Box 708, Lewiston, NY 14092



## Literature Reviews

**DIE FERRARY - AUKTIONEN: PARIS 1921 - 1925, ZURICH 1929**, by Joachim Erhardt. Published by the author, Stuttgart 1987. No. ISBN. Hardbound, 6½ in. X 9½ in., 1256 pp. \$175 US. Available from Leonard H. Hatmann, P.O. Box 36006, Louisville, Kentucky, 40233.

The value of reprinting philatelic literature is in making a rare item available to a wider audience. *The Ferrari Catalogues* by Joachim Erhardt is an example of how well this can be done.

Mr. Erhardt estimates that there are no more than 100 to 150 sets of the original Ferrari catalogues in existence. Until now information concerning what was, perhaps, the most significant philatelic sale ever held has been inaccessible to most of us. Happily this problem is now solved.

As a unilingual English reader I had not expected it to be easy getting anything out of a book which would be primarily in French. It was therefore a pleasant surprise to discover how simple it is to use. Both the introduction by the author and the foreword by Prof. Dr. Carlrichard Bruhl are printed in three languages, German, English and French, permitting an easy understanding of the layout of the book up front where it is most useful.

This large (1,256 page) book is arranged in the following manner. The introduction and foreword are followed by, not one, but two indexes. The first, by George Napier, published in London in 1925 in English, cross-references stamps by country to a specific sale and lot number. The second, by Fernand Serrane, published in Paris in 1932 in French, does the same for the photo plates. The actual reprints of the 14 Paris sales and the later Zurich sale then follow in chronological order. The descriptive section of each sale is preceded by the photo plates and followed by the prices realized.

There are a couple of features which I especially like about the book. First the photo plates. They are excellent, much better than might be expected considering that they are reproduced from catalogues around 60 years old. Then there are the prices realized. Those

for the Paris auctions are, of course, listed in French francs, but for each sale, not only is the amount of the French government surtax given (it went from 17½ per cent to 19½ per cent) but the US dollar and British pound conversion rates current on the last day of each sale also are recorded.

The famous British Guiana One Cent on magenta is featured in sale number III. On comparing the enlarged illustration in the catalogue with how I remember it from Ameripex '86, its condition appears to have deteriorated somewhat over the years. It was sold as lot 295 on April 6, 1922 for 300,000 francs. At the quoted 9.12 cents to the Franc, this converts to \$27,360 (all quoted dollar values are US). After the 17½ per cent French government surtax, the total amount paid by the buyer was \$32,148 plus, presumably, an agent's commission. Today's value is perhaps between 25 and 30 times this figure representing an appreciation in the order of 5 per cent compounded annually.

Earlier on the same day, several Canadian items had come under the hammer. a very fine mint pair of the 12d black, lot 216, sold for 38,000 francs plus tax (\$4072). Lot 226 was a mint perforated 6d, slightly off centre as is fairly typical of this stamp. It sold for 1300 francs plus tax (\$139). One of the better buys in the sale was the unique New Carlisle postmaster's provisional envelope which, together with another cover, sold as lot 214 for 320 francs (\$35 including the tax)! This was before it was recorded by Stanley Gibbons. What a difference a catalogue listing makes!

The 14 Paris sales, spread over a period from June 23, 1921 to Nov. 26, 1925, liquidated all of the Ferrari collections seized for reparations after World War One by the French government. His specialized Greek Hermes head collection, which had spent the war years safe from seizure in Switzerland was sold later in April 1929 in Zurich.

This reprint has done a great service to philately. It is not a cheap book but as the originals are virtually unobtainable it fills a real need. I only wish more such works were available.

GL



**PAINTINGS ON STAMPS, VOLUME VI ARTISTS OF THE WORLD 'R'**, by William Sherwood and Bernard Seckler, assisted by Francine Stewart, published by Fine Art Philatelists, 7502 E. 80th St., Indianapolis, IN, 46256, 8½ in. by 11 in., standard three-hole loose-leaf pages, 80 pages, no illustrations, \$7.50 US (plus 75 cents postage in US, \$2 US for destinations outside the U.S.A.), available from: Mrs. Ursel Kissinger, FAP Handbook Sales Manager, Beckers Road, Box 477, RD 1, Temple PA 19560, U.S.A.

This 80-page publication, like the previous six Fine Arts Philatelists' handbooks, is a god-send to topical collectors of art on stamps. Published by the FAP, an international society devoted to the study of art on stamps, it lists 'R' artists, from Raphael and Rembrandt to Romano and Rubens as well as hundreds of other lesser known artists whose works or parts of works have been depicted on stamps around the world.

Each entry contains artistic details about the work, date of execution, medium used, dimensions and present location of the original. The

entries in the 80-page test bring to 9,199 the number listed in the six FAP handbooks published so far.

The listings use Michel catalogue numbers, preferred to the more transitory Scott numbers. Minkus numbers for recent issues were not available at the time the handbook was published.

Volume VI is chiefly the work of Bernard Seckler, the *FAP Journal's* new issues editor though the title page carries the names of the late William Sherwood and Francine Stewart who collaborated in the production of the first five volumes with Seckler.

The volume contains a number of cross-references to previous volumes to make it easier for the paintings-on-stamps or artists stamps collectors to find the necessary details they may be looking for to prepare a topical exhibit.

JPH




---

When you patronize our  
advertisers, tell them you  
saw their ad in  
The Canadian Philatelist

---

## KORWIN STAMP EXPERTIZING SERVICES

(Manager a member of: R.P.S.C., P.F., G.P.S., F.C.P.S.)



**We Offer:** Prompt and thorough expertise of stamps and postal history material. We do not have six month backlog....yet!!!

**We Have:** Low 3% charge on material found genuine. \$3.00 minimum per item or \$10.00 per consignment + postage.

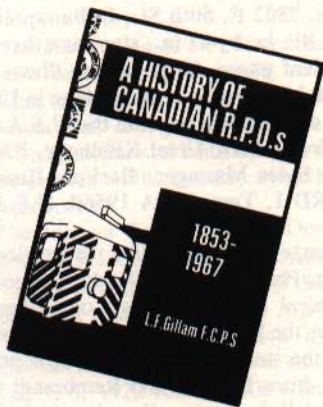
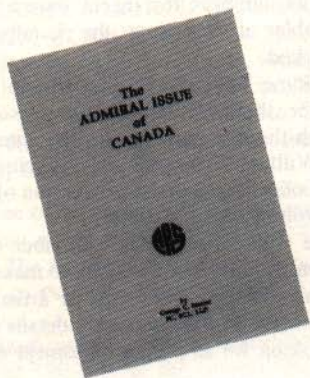
Our photo-certificates are \$20.00 **regardless** value of the item.

**We Offer:** Philatelic infrared, and U.V. photography for investigation, analysis and documentation of repairs, removed cancellations, colour, design or gum alterations.

FOR MORE INFORMATION PLEASE WRITE:

36 Government Rd.,  
Toronto, Ontario, Canada, M8X 1V9





### The Admiral Issues of Canada, by George Marler

576 pages — 575 illustrations (254 in color)

"A truly definitive work"

**\$35 U.S.**

### A History of Canadian R.P.O.'s, 1853-1967, by L.F. Gillam

179 pages — more than 100 illustrations

"A reprint of the author's first edition"

**\$11 U.S.**

**\*\* (APS members may deduct 20% from above prices) \*\***

order from  
American Philatelic Society  
Dept. TC, P.O. Box 8000  
State College, PA 16803, U.S.A.

Information about other APS member services: 100 page monthly magazine, stamp collection insurance, sales circuits, other books, beginner correspondence courses, and much more is also available from the address above.

*Over 1,500 Canadians are now members of APS!*





# Society Reports

The following applications were received and are herewith published in accordance with the Constitution. If no adverse reports are received within thirty days of publication, applicants will be accepted into full membership. Any objections should be sent to: P.O. Box 5320, Station "F", Ottawa, Ontario K2C 3J1.

\* requests address not be published

(M) minor — activity guaranteed by parent or guardian

(D) dealer

## NEW MEMBERS

- |  |   |
|--|---|
| <p>24589 Mrs. Marion R. Frola<br/>2969 Valentine Avenue,<br/><b>Bronx</b>, New York, USA, 10458<br/><i>Canada, Commonwealth, Animals,<br/>Navigation, Flowers</i></p> <p>24590 Mr. Thomas L. Conti<br/>600 Col. Dewees Rd.<br/><b>Wayne</b>, PA, USA, 19087<br/><i>U.S., Italy, Italian States and Colonies</i></p> <p>24591 Mr. Ben Zion Marks<br/>11 Ridgescourt,<br/><b>Oakville</b>, CT, USA, 06779<br/><i>Canada, USA, G. BRT., Aust., Israel -<br/>used only.</i></p> <p>24592 Mr. John H. Jones<br/>8774 Tyrone Avenue,<br/><b>Panorama City</b>, CA, USA, 91402<br/><i>USA, Scouts, Stamps on Stamps,<br/>Aviation, Ships, airmail</i></p> <p>24593 Mr. Timothy J. O'Leary<br/>755 Prospect Street,<br/><b>New Haven</b>, CT, USA, 06511<br/><i>Canada, Greenland, USA</i></p> <p>24594 Mr. Markus S. Ashton<br/>107 Ashworth Park,<br/><b>Knutsford</b> Cheshire, England<br/>WN6 9DQ<br/><i>Early Canadian Issues — Postal<br/>History Items</i></p> <p>24595 Mrs. Anne M. Kearley<br/>P.O. Box 1159,<br/><b>Stellarton</b>, NS B0K 1S0<br/><i>Canadian and Newfoundland</i></p> <p>24596* Mr. Georg F. Gerlach<br/><i>Cdn booklets &amp; booklet se-tenant coils<br/>— start/end strips</i></p> <p>24597 Mr. Gary B. Roosa<br/>5942 W. Hazelwood Drive,<br/><b>Phoenix</b>, AZ, USA 85033<br/><i>US, Can., GB, Channel Islands, Nfld.,<br/>Sweden, Fr., W. Ger.</i></p> | <p>24598 Mr. Chris F. Green<br/>3850 Hillcrest Avenue,<br/><b>N. Vancouver</b>, BC, V7R 4B6<br/><i>Mint Canada and Provinces and<br/>Revenues (Canada)</i></p> <p>24599 Mr. Rene C. Lejeune<br/>355 St. Louis,<br/><b>Dorval</b>, QC, H9S 2S5<br/><i>Worldwide</i></p> <p>24600 Miss M. Annette Burns<br/>117 Bernard Avenue,<br/><b>Toronto</b>, ON, M5R 1S4<br/><i>Canadian</i></p> <p>24601 Mr. David G. Dailey<br/>7511 Flint, Apt. C,<br/><b>Shawnee</b>, KS, USA, 66214-1234<br/><i>U.S., UN, Canada, FDCs of the<br/>preceding countries</i></p> <p>24602 Mr. Hal Charm<br/>#1 Acacia St., Valle Verde - 3,<br/>1600 Pasig, M. <b>Manila</b>, Philippines,<br/><i>Can, US, Kiloware, on paper, general<br/>world</i></p> <p>24603 Mr. August O. Herrnsdorf<br/>Jalan Pakubuwono - VII/65,<br/><b>Jakarta</b>, Indonesia, 12120<br/><i>Can, USA, UNO, Gr. Britain, Australia,<br/>Scandinavia, Indonesia</i></p> <p>24604 M. Raymond Bernier<br/>925 rue Desjardins,<br/><b>St. Pascal</b>, QC, G0L 3Y0<br/><i>Canada, United States</i></p> <p>24606 Mr. Lloyd R. Young<br/>669 Dallenlea Ave.,<br/><b>Winnipeg</b>, MB, R2K 2A8<br/><i>All of China and offices in stationery<br/>and stamps.</i></p> <p>24607 Posti/Telemuseo<br/>Tehtaank 21 B,<br/><b>Helsinki 15</b>, 5F-00150,<br/>Finland</p> |
|--|---|



## NEW MEMBERS

- 24608 Periodicals Unit Metro Toronto Lib.  
789 Yonge Street,  
**Toronto, ON, M4W 2G8**
- 24609 Dr. Andrew Pawlowski  
62 Wells Hill Avenue,  
**Toronto, ON, M5R 3A8**  
*Greenland, Arctic, Denmark, Canada*
- 24610\* Mr. Irving N. Frederick  
*British North America*
- 24611 Mr. Edward G. Sykes  
104 - 2303 Eglinton Ave., East,  
**Scarborough, ON, M1K 2N6**  
*Mint BNA, US*
- 24612\* Mr. Kirk R. Lowe  
*Canada stamps only*
- 24613 M. Andre Mongrain  
6849 Belanger,  
**Montreal, QC, H1M 3E9**
- 24614 Mr. Robert A. Anderson  
700 E. Sunset Drive,  
**Bellingham, WA, USA, 98225**  
*Canada, USA, Latvia, Iceland, Finland*
- 24615 Mrs. Shirley M. Koehler  
5 Robert Drive,  
**Hyde Park, NY, USA, 12538**  
*Brit. Commonwealth and USA*
- 24616 Mr. Michael Bonder  
36 Gladstone Drive,  
**East Brunswick, NJ, USA, 08816**  
*US, UN, Canada - Mint/Used for all*
- 24617 Mr. Stephen S. Connelly  
1611 South 6th St., Apt. 911,  
**Minneapolis, MN, USA, 55454**  
*Canada, USA, UN, Brit. Commonwealth*
- 24618 Mr. Neil Goldwasser  
1225 River Road, Unit 12C,  
**Edgewater, NJ, USA, 07020**  
*FDC; FFL; Proofs T/C*

## CHANGE OF ADDRESS

- ADAMS, Marilyn F. (23260) 5½ Lundy Lane, **London, ON, N6C 3G4**
- ALBERT, JR., A.J. (8467L) 61 Alexandria Way, **Basking Ridge, NJ 07920 USA**
- AMY, Camille B. (23040) 53 Country Club Place, **Brockville, ON, K6V 5T3**
- ASTLE, Richard L. (13786) P.O. Box 388, **Caroline, AB, T0M 0M0**
- BEAUCHAMP, Michel (20207) 620-36th Ave., **Lachine, PQ, H8T 9Z7**
- CARTWRIGHT, Gordon (22059) Box 71, Arbutus Ridge, R.R. 2, **Cobble Hill, BC, V0R 1L0**
- CLERMONT, Gilbert (22913L) 810-1591 Riverside Dr., **Ottawa, ON, K1G 4A7**
- COLVIN, Jim (14581) 8975-413 Lawrence Welk Dr., **Escondido, CA, 92026, USA**
- CREIGHTON, Richard W. (22373) 120 Rosedale Valley Rd., Apt. 303, **Toronto, ON, M4W 1P8**
- CRUICKSHANK, Dr. Bruce (13294) 718 Monsarrat Ave., **London, ON, N5Y 4M9**
- CURRE, Lucien P. (24451) 410 W. Commercial St., **Fairport, New York, 14445, USA**
- EATON, Daniel L. (21286L) 505 Burrard St., #1860, **Vancouver, BC, V7X 1M6**
- EDWARD, William G. (12278) P.O. Box 964, **Freeland Whidbey Island, WA, 98749, USA**
- ELDER, Rev. Brian R. (13909L) Box 1299, 404 St. George St., **Port Dover, ON, N0A 1N0**
- FOX, Lawrence R. (22902) 114 Myles Ave. Gondola Pt., **Rothsay, NB, E2E 1G1**
- GAUTHIER, Douglas J. (24014) 462 Winchester Avenue, **Sudbury, ON, P3E 3T6**
- GEARING, Patrick J. (22589) 34, avenue Des Retraites, **Mont-Joli, PQ, G5H 1E4**
- GOODGR, Norman M. (7485) 80 Ridout St., S., #402, **London, ON, N6C 5H7**
- GOSNEY, Harold G. (7414L) 81 Thicketwood Drive, **Stouffville, ON, L4A 4K6**
- HATHOR, Manfred (14894) 1713 Gosnell Road, **Vienna, VA, 22180, USA**
- HARRISON, H.W. (6779L) 1802 Indian Head Rd., **Baltimore, MD, 21204-6428, USA**
- HILL, Gordan M. (7389L) 11 Coach Side Terrace S.W., **Calgary, AB, T3H 2T3**
- HIRD, J. Gordan (7563) 1543 Point-O-Woods Rd, **Mississauga, ON, L5G 2X6**
- HOOVER, Beverly A. (22888) 97 Centre St., Box 85, **Beeton, ON, L0G 1A0**
- JENSEN, George G. (23893) 37 Waterwheel Cr, **Lower Sackville, NS, B4E 2K4**
- KAHLMEIER, Horst (9587L) P.O. Box 2394, **Kitchener, ON, N2H 6M3**
- KAPUSZTA, Joseph (10299) 27166-28B Ave., Box 423, **Aldergrove, BC, V0X 1A0**
- LEWIS, David (19839) P.O. Box 3874 Hastings, **Vancouver, BC, V6B 3Z3**
- MACEACHERN, Don E. (19928L) P.O. Box 10, **Winsloe, PE, C0A 2H0**
- MACLEOD, Gordan F. (23832) Route 3 Box 395, **Folkston, GA, 31537, USA**
- MARSHALL, Harold T. (21372) Box 2576, **Kitchener, ON, N2H 6N2**
- MCCCLUSKEY, Donald M. (19894) 2385 Haumana Place, **Honolulu, HI, 96819, USA**



## CHANGE OF ADDRESS

MORIN, Cimon (10284L) 95 Maple Grove, **Alymer**, PQ, J9H 2E3  
 MORNEAU, Renney E. (23968) P.O. Box 706, **Berlin**, NH, 03570, USA  
 MORRIS, Ken D. (21551) 302 - 4920 - 54 Avenue, **Yellowknife**, NWT, X1A 1H7  
 OSBORNE, John (22976) 75 Woodlake Rd., **Sherwood Park**, AB, T8A 4B9  
 PAGE, Andre (22957) 380-5 Dorval, **L'Assomption**, PQ, J0K 1G0  
 PARAMA, Richard D. (19200) Unit 6, 2 Mears Court, **Karratha**, W.A., 6714, Australia  
 PEACH, Dr. Michael E. (15130) P.O. Box 884, **Wolfville**, NS, B0P 1X0  
 PERQUIN, John (19764) 14 Dingwall Court, **Brampton**, ON, L6Z 2V3  
 PRESCOTT, Donald A. (22694) 9 Rovers Ave. 9th St., **Red Deer**, AB, T4P 3K4  
 RANDALL, Edward L. (22898) R.R. #1, **Pefferlaw**, ON L0E 1N0  
 RICHMOND, Edward S. (15878) P.O. Box 137, **Blenheim**, ON, N0P 1A0  
 ROBINSON, Leslie M. (14560) c/o #43-10780 Guildford Dr., **Surrey**, BC, V3R 1W6  
 SCHWABE, Albert W. (20009) 120 N Val Vista Space A-273, **Mesa**, AZ, 85213, USA  
 SMITH, Marjorie U. (19718L) P.O. Box 3884, **Pt. Fortin**, Trinidad, W.I.  
 STAGER, Phillip J. (22129) 4184 51st Ave., South, **St. Petersburg**, FL, 33711-4734 USA  
 TURCOTTE, C.E. (11264L) P.O. Box 432, **Hampton**, NB, E0G 1Z0  
 VAN ANDEL, Roger J. (13335L) c/o Hong Kong Int'l School, 23 South Bay Close, **Repulse Bay**, Hong Kong  
 WALKER, Keith S. (23275) #66-2131 Oak St., **Sherwood Park**, AB, T8A 4W9  
 WATERFIELD, John S. (23694) 50 Saddlehorn Cr., **Kanata**, ON, K2M 2A9  
 WILLEY, Robert C. (6590L) 102-2546 Quadra St., **Victoria**, BC, V8T 4E2  
 WILLIAMS, Robert J. (22734) 109 Barker Ave., **Toronto**, ON, M4C 2N8  
 WYMAN, Robert M. (21876) P.O. Box 281, **Milford**, NH, 03055-0281, USA

## NAME CHANGE

REINISCH, Charles R. (22909) to REINISCH, Mr. Karel R.

## REINSTATEMENT

FRY, Arthur (11551) 1508 Wedington Dr., **Fayetteville**, AR 72701 USA  
 HOYNACKE, Anthony C. (21975) 512 Woodward Ave., **Iron Mountain**, MI 49801 USA

## DECEASED

CONLEY, Herman R. (20259) **Brantford**, ON  
 GIBSON, J. Douglas (23330) **Toronto**, ON  
 HASSELL, David M. (20218) **Whitby**, ON  
 HORNUNG, Walter H. (8649) **Whaletown**, BC

## RESIGNATIONS

ATKINSON, F.G. (4454) **Montreal**, PQ, H4A 3P7  
 BENNETT, James G. (23190) **Smith Falls**, ON, K7A 1S4  
 DE HAAN, Sid S. (20344)  
 DOYLE, Lucien R. (20293) **Tracy**, PQ, J3R 2Y6  
 FREESTONE, Jack (22275) **W. Vancouver**, BC, V7T 1A7  
 HUMPHRIES, George H. (19146) **Victoria**, BC, V8V 3A3  
 KEYS, Kenneth S. (23693) **Highlands**, NC 28741 USA  
 KUIPERS, Henri (22569) **Langley**, BC, V3A 4C4  
 MAJOR, John-Harry (20954) **Kamloops**, BC, V2C 4S4  
 MCCARTHY, Frederick F. (23583) **Wheelwright**, MA 01094 USA  
 MOORE, Donald M. (23656) **Moncton**, NB, E1E 2A7  
 RIZEWISKI, Steve (20270) **Kanata**, ON K2L 1J3  
 THOMPSON, G. Homer (6568) **Brampton**, ON L6W 1K4  
 W. VAN SENIORS STAMP, Club (CH-183)  
 WALKER, Keith S. (23275) **Sherwood Park**, AB, T8A 4W9  
 WINSLOW, Henry E. (20212) **Fort Erie**, ON L2A 5Y1



**CHAPTER CHANGE OF ADDRESS**

Societe De Phil. Des Bois Francs Inc. (CH-179) P.O. Box 303, **Victoriaville**, QC, M5P 2L6  
La Societe de Phil. de Que. (CH-40) 390 Chemin St. Louis. App. 11, **Quebec**, QC, L1S 1B6  
Owen Sound Stamp Club (CH-191) c/o Chris J. Pointon (23242, 1218 - 4th Ave. E.,  
**Owen Sound**, ON. N4K 2P6  
Delta Stamp Club (CH-138) 325-54th St., **Delta**, BC, V4M 3G6  
North Toronto Stamp Club (CH-5) 2250 Lawrence Ave., E., Apt. 406, **Scarborough**, ON,  
M1P 2P9

---

---

## **THE ROYAL PHILATELIC SOCIETY OF CANADA**

### **FINANCIAL STATEMENTS**

#### **FOR THE YEAR ENDED**

#### **DECEMBER 31, 1987**

---

---

#### **Auditor's Report**

To the Members of  
The Royal Philatelic Society of Canada

We have examined the balance sheet of The Royal Philatelic Society of Canada as at December 31, 1987 and the statements of members' equity, income and expense and changes in financial position for the year then ended. Our examination was made in accordance with generally accepted auditing standards, and accordingly included such tests and other procedures as we considered necessary in the circumstances except as noted in the following two paragraphs.

Fees and commissions received, by their nature, are not susceptible to complete audit verification. Accordingly, our verification of receipts from these sources was limited to a comparison of recorded receipts to bank deposits.

No physical inventory was made and accordingly the value of the inventory (which consists of medals, pins, ties, scarves and decanters) was not susceptible to audit verification.

In our opinion, except for the effect of adjustments, if any, which we might have determined to be required had we been able to audit fee and commission income and examine the inventory, these financial statements present fairly the financial position of the Society as at December 31, 1987 and the results of its operations and the changes in its financial position for the year then ended in accordance with generally accepted accounting principles applied on a basis consistent with that of the preceding year.



**BALANCE SHEET****Assets**

		1987	1986
<b>Current</b>			
Cash .....		\$ 10,207	\$ 8,391
Bank certificates .....		30,000	0
Accounts receivable .....		6,738	10,051
Accrued interest on investments .....		1,033	2,380
Inventory .....		<u>13,919</u>	<u>18,383</u>
		61,897	39,205
<b>Investments — at cost</b>			
Scotia Mortgage Corporation Debenture, 11½ due February 28, 1988 .....		10,000	10,000
Ontario Hydro bond — due 1988 .....		<u>2,500</u>	<u>2,500</u>
		12,500	12,500
<b>Equipment</b>			
	<b>COST</b>	<b>ACCUMULATED DEPRECIATION</b>	
Computer .....	<u>\$ 27,100</u>	<u>\$ 22,100</u>	<u>\$ 5,000</u>
			\$ 18,970
<b>Other</b>			
Office equipment, exhibition stands and shipping cases .....		3	3
		<u>3</u>	<u>3</u>
		<u>\$ 79,400</u>	<u>\$ 70,678</u>

**Liabilities**

<b>Current</b>			
Accounts payable .....		\$ 2,045	\$ 3,045
Payments received in advance			
Advertising .....		2,002	1,148
Membership fees .....		53,577	51,422
Chapter fees .....		<u>460</u>	<u>588</u>
		58,084	56,203

**Members' Equity****Members' Equity**

Life members .....	65,031	63,731
General (deficit) .....	<u>(43,715)</u>	<u>(49,256)</u>
	<u>21,316</u>	<u>14,475</u>

**Statement of Members' Equity**

<b>Life Members</b>		1987	1986
Balance at beginning of year .....		\$ 63,731	\$ 58,831
Contributions re new members .....		<u>1,300</u>	<u>4,900</u>
Balance at end of year .....		<u>\$ 65,031</u>	<u>\$ 63,731</u>
<b>General</b>			
Balance at beginning of year — deficit .....		(\$ 49,256)	(\$ 56,569)
Excess of income over expense .....		<u>5,541</u>	<u>7,313</u>
Balance at end of year — deficit .....		<u>(\$ 43,715)</u>	<u>(\$ 49,256)</u>



## STATEMENT OF INCOME AND EXPENSE

	1987	1986
<b>Income</b>		
Membership fees.....	\$ 82,309	\$ 80,199
Chapter fees.....	779	698
Admission fees.....	2,447	741
Net income from sales department — note 3.....	8,636	5,114
Slide Program (net).....	961	568
Income from investments.....	2,228	1,782
Foreign exchange.....	4,022	4,549
Miscellaneous.....	546	357
	<u>101,928</u>	<u>94,008</u>
<b>Expense</b>		
Magazine		
Printing, postage and distribution.....	55,709	61,437
Editorial costs.....	225	1,659
	<u>55,934</u>	<u>63,096</u>
Less advertising revenue.....	10,024	12,767
Net cost of magazine.....	45,910	50,329
International representation.....	592	456
Convention.....	236	(500)
Society promotion.....	8,602	1,867
General administration.....	14,943	16,184
Audit and legal.....	1,302	1,808
Printing and stationery.....	755	2,814
Postage.....	4,319	4,604
Directors' expense.....	1,987	2,037
Anti-theft committee.....	767	1,315
Maintenance and modification of computer.....	3,004	3,071
Depreciation of computer.....	13,970	2,710
	<u>96,387</u>	<u>86,695</u>
<b>Excess of Income over Expense, for the year</b>	<u>\$ 5,541</u>	<u>\$ 7,313</u>

## Statement of Changes in Financial Position

	1987	1986
<b>Operating Activities</b>		
Net income for the year.....	\$ 5,541	\$ 7,313
Depreciation charged against earnings not requiring an outlay of cash.....	<u>13,970</u>	<u>2,710</u>
	19,511	10,023
<b>Net change in non-cash operating balances</b>		
(Increase) decrease in current assets		
Accounts receivable.....	3,313	(460)
Accrued interest on investments.....	1,347	231
Inventory.....	4,464	(6,403)
<b>Increase (decrease) in current liabilities</b>		
Accounts payable.....	(1,000)	(1,000)
Payments received in advance.....	<u>2,881</u>	<u>(4,419)</u>
	<u>11,005</u>	<u>12,051</u>



**Financing Activities**

Return of advance to Ameripex 86.....	0	1,259
Life memberships.....	1,300	4,900
	<u>1,300</u>	<u>6,159</u>
<b>Increase in cash, for the year.....</b>	<b>8,391</b>	<b>4,260</b>
<b>Cash, end of year.....</b>	<b><u>\$ 40,207</u></b>	<b><u>\$ 8,391</u></b>

**Notes to the Financial Statements****1. Significant Accounting Policies**

- Inventory is determined and valued at approximate cost from the records as at year end.
- Income and expense are accounted for on the accrual basis. Membership fees received in advance are deferred and brought into income in the applicable year.
- Office equipment, exhibition stands and shipping cases are recorded at nominal value of \$1 each. Additions are expensed in the year acquired.
- The computer is recorded at cost and was being depreciated on the straight-line method at 10% per annum in prior years. In 1987 a provision of \$13,970 was recorded to reflect obsolescence.
- Current assets in foreign currencies are translated into Canadian dollars at the exchange rate prevailing at the balance sheet date. Foreign currency transactions during the year are translated at the rate applicable at the time of the transaction.

**2. Trust Funds Re Sales Department**

The Society operates a sales department where members can offer stamps for sale to other members. The funds received from the sale of such stamps net of commissions are held in trust for owners until the books containing the stamps are retired at which time payments are made. The operation of the sales department is contracted out and the details of the operation are not part of the records of the Society. The net funds received on behalf of owners however are held in bank accounts in the name of the Society. There were balances totalling \$58,824 on deposit as at December 31, 1987 (\$65,040 December 31, 1986).

**3. Net Income from Sales Department**

	1987	1986
The detail is as follows:		
Commissions.....	\$ 11,470	\$ 7,973
Cost of sales department.....	<u>6,356</u>	<u>6,400</u>
Net income.....	<u>\$ 5,114</u>	<u>\$ 1,573</u>

**SALES DEPARTMENT — — —**

Once again I am asking all members who have extra Canadian and/or Newfoundland stamps, mint and used, back of the book, revenues, precancels, perfins or covers to please fill some sales books for the sales circuit. I am woefully short of Canadian books.

As well as Canada, I can use almost any country or groups of countries.

Sale books are available from me at 50 cents each. There are also openings on most multi-

ple circuits — if you don't care for that format, you can get direct circuits which are handpicked to suit your needs (providing suitable books are available).

For information on the sales circuit services — buying or selling — please write or telephone me.

Margaret Allen

P.O. Box 727, Fenelon Falls, Ont. K0M 1N0  
Telephone (705) 887-5386



# CHAPTER MEETINGS

## AJAX PHILATELIC SOCIETY

R.P.S.C. Chapter 163 meets 1st and 3rd Mondays of each month, September to June in St. Bernadette's Hall, S-E corner of Harwood & Bayly, Ajax, from 7 to 10 p.m. All visitors welcome, especially junior collectors. Address: P.O. Box 186, Ajax, Ontario L1S 3C3.

## AMICALE des PHILATELISTES de l'OUTAOUAIS

R.P.S.C. Chapter 190 meets every Thursday, September to April in the basement of the Saint Benoit Church, 170 Sherbrooke Street, Hull, Qué. Visitors welcome. For information, P.O. Box 422, Gatineau, Qué. J8P 7A1.

## BARRIE DISTRICT STAMP CLUB

R.P.S.C. Chapter 73 meets second Wednesday of each month except July and August, at 7:30 p.m. at the Parkview Centre - 191 Blake Street, Barrie, Ont. Table Auction at every meeting. Visitors welcome. Contact: Sec.-Treasurer Lew Metzger - 164 Wellington St. East, Barrie, Ont. L4M 2C8.

## BRAMALEA STAMP CLUB

R.P.S.C. Chapter No. 144 meets 1st Sunday (1:30-4:00 p.m.) and 3rd Tuesday (7:30-9:30 p.m.), September to June at Terry Miller Recreation Complex, Meeting Room 2, Williams Parkway (between Dixie Rd. & Bramalea Rd.) Bramalea, Ont. All visitors welcome. Correspondence to: Bramalea Stamp Club, P.O. 2041 Bramalea, Ont. L6T 3S3.

## BRITISH COLUMBIA PHILATELIC SOCIETY

Meetings every Wednesday at 7:30 p.m. at Sunset Community Memorial Centre, Multi 'C' Room, 404 East 51st Avenue, Vancouver, B.C. Visitors welcome. Mail to the club c/o Mr. Leslie Upton, Secretary, 607 East 6th Street, North Vancouver, B.C. V7L 1R4.

## CALGARY PHILATELIC SOCIETY

(Chapter 66) Regular meeting: First Wednesday of month, 7:00 p.m. Auctions on third and fourth Wednesday of month, 7:30 p.m. Kerby Center, 1133 7 Ave. S.W. No meetings in July and August. Correspondence to Calgary Philatelic Society, P.O. Box 1478, Station "M", Calgary, Alta, T2P 2L6.

## CANADIAN ASSOCIATION FOR ISRAEL PHILATELY

(C.A.F.I.P.) R.P.S.C. Chapter 76 meets every second Monday of the month (except July and August) at 7:30 p.m. at the Jewish Community Centre, 4588 Bathurst Street, Willowdale, Ontario. President: Harvey L. Frankel, 61 Alness St. #228, Downsview, Ont. M3J 2H2.

## CHATEAUGUAY VALLEY STAMP CLUB

Chapter 186 usually meets the 1st and 3rd Wednesday of each month in St. George's Church, 162 St. Francis Blvd., Chateaugay, Quebec. Visitors welcome. For more information inquiries can be sent to Box 303, Chateaugay, Quebec J6J 3X0.

## COLUMBIA PHILATELIC SOCIETY

Chapter 11 RPSC meets 7:30 every fourth Tuesday. Visitors welcome. Box 465, Trail, B.C. V1R 4L7. Phone 368-9601.

## DELTA STAMP CLUB

Chapter No. 138 meets on the second and fourth Tuesdays (except June/August) 8 p.m. at the South Delta Library, 1321A - 56th Street, Delta, B.C. Visitors always welcome. Further information: Bill Heather, (604) 943-5303, 325-54th Street, Delta, B.C. V4M 3G6.

## EAST TORONTO STAMP CLUB

Stan Wadlow Clubhouse, Cedarvale Ave. first east of Woodbine, at Cosburn, north of arena. 1st & 3rd Wednesdays of each month (except in July & August). Sec'y: Raymond Reakes, 188 Woodmount Ave., Toronto, Ont. M4C 3Z4. Visitors always welcome.

## ESSEX COUNTY STAMP CLUB (WINDSOR)

RPSC Chapter 154 meets on the second and fourth Wednesday of the month (except July, August and December) at Roseland Golf and Curling Club, 455 Kennedy Dr. W., Windsor, Ontario. Meetings are held at 7:30 p.m. All collectors and visitors are welcome, whatever your interests. Information from: The Secretary, Essex County Stamp Club, P.O. Box 1503, Station A, Windsor, Ontario N9A 6R5.

## ETOBICOKE PHILATELIC SOCIETY

RPSC Chapter 78 will meet for the 1988-1989 season as follows: Wed. Sept. 7; Wed. Oct. 5; Wed. Nov. 2 at Fairfield Senior Citizens Centre, 80 Lothian Ave. Etobicoke, then the first Wednesdays of Jan.; Feb.; Mar.; Apr.; May & June 1989 again at Fairfield Senior Citizens Centre. All meetings start at 7:30 p.m. VISITORS ARE WELCOME. Information from President C.E. Allen, 5 Aintree Court, Toronto, Ont. M8W 2E1 Tel: 251-3425.

## FENELON STAMP CLUB

Fenelon Stamp Club R.P.S.C. Chapter 176 meets the 1st Tuesday of each month in the Fenelon Falls Public Library at 7:30 p.m. President Isabel Wessell, R.R. #3, Woodville, ON K0M 2T0. Visitors welcome.



# CHAPTER MEETINGS

## HAMILTON PHILATELIC SOCIETY

Welcome all visitors to our membership meetings held twice monthly on the second and fourth Mondays of each month except June, July and August when the Society meetings on the second Monday only. We meet at the Hamilton Fire Fighters Club, 501 Concession Street (off Upper Wentworth) in Hamilton at 6:30 p.m. (Entrance and parking at rear of building). A bourse of up to 14 dealers attend every meeting with the Society's Sales Circuit and Library. Admission - Visitors - 75¢.

## KAWARTHA PHILATELIC SOCIETY

Chapter 58, R.P.S.C. Meetings 2nd and 4th Tuesdays of months September through June (exclude 4th Tuesdays in December and June) 7:00 p.m. Meeting place St. Johns' School, corner of Braidwood and Jane St. Peterborough, Ont. Contact Lloyd Mosher, Pres. Mailing address of Club: Box 2222, Peterborough, Ont. K9J 7Y4.

## KELOWNA & DISTRICT STAMP CLUB

Chapter 90 meets monthly, 1st Wednesday, Sept. to June, from 7-10 p.m. in the Kelowna Secondary School Cafeteria, 575 Harvey Ave. business meeting 8 p.m. followed by an auction - visitors always welcome. Address: Box 1185, Kelowna, B.C. V1Y 7P8.

## KENT COUNTY STAMP CLUB

Chapter No. 7 Regular meetings the fourth Wednesday of each month (except July, August and December) in the cafeteria of John McGregor Secondary School, 300 Cecile at 7:30 p.m. Visitors always welcome. Secretary Abie Heersma, 73 Jasper, Chatham, Ont. N7M 4C1.

## LAKEHEAD STAMP CLUB

R.P.S.C. Chapter No. 33, meets second Wednesday and last Friday monthly from September to June in the Emergency Measures Building. Visitors are welcome. Edith Dombrowsky, Secretary, Lakehead Stamp Club, 174 Elron Crescent, Thunder Bay, Ontario P7C 5T5.

## LAKESHORE STAMP CLUB

RPSC Chapter 84 meets at The Church of The Resurrection, 99 Mount Pleasant, Pointe-Claire, Québec. Meeting nights 2nd and 4th Thursdays, September till June, at 7:30 p.m. President Ray Ireson. Mailing address: P.O. Box 1, Pointe Claire, P.Q. H9R 4N5.

## MEDICINE HAT COIN AND STAMP CLUB

R.P.S.C. Chapter #146 meets the second and fourth Tuesdays of every month at 7:30 p.m., Room #14 at the Veiner Centre, 225 Woodman Avenue S.E. Visitors are welcome. Club address is Box 1163, Medicine Hat, Alberta T1A 7H3.

## NORTH TORONTO STAMP CLUB

Chapter 5 of the Royal. Meetings at 7:30 p.m. on Second and Fourth Thursdays (except in July and August) at Bedford park United Church, 100 Ranleigh Avenue, Toronto. Visitors Welcome.

## NORTH YORK PHILATELIC SOCIETY

Chapter 21 of the Royal meets on the 1st & 3rd Wednesdays of each month - July & August excepted, at Edithvale Community Centre, Finch at Edithvale (between Bathurst & Yonge). Secretary: P.O. Box 62, Willowdale, Ont. M2N 5S7.

## OAKVILLE STAMP CLUB

Chapter No. 135 meets the second and fourth Tuesday of each month at 7:30 p.m. in the "Pine Room", Oakville Arena, Rebecca Street, Oakville. Mailing Address: P.O. Box 524, Oakville, Ontario, L6J 5B4. Geoff Hill, President.

## OTTAWA PHILATELIC SOCIETY

R.P.S.C. Chapter No. 16, meets Thursday at 8:00 p.m. September through May in room 021, Marion Hall, University of Ottawa. Visitors welcome. Information from P.O. Box #9442, Alta Vista Terminal, Ottawa, Ont. K1G 3V1

## R A STAMP CLUB - OTTAWA

(Chapter 41, RPSC). Meets 7:30 p.m. every Monday at The R.A. Centre, 2451 Riverside Drive, Ottawa, Ontario. (Except June, July and August). Visitors Welcome - phone 733-5100.

## SAINT JOHN STAMP CLUB

Meets 2nd and 4th Wednesdays 8 p.m. at St. Malachy's High School with exception of June to August. Auction at each meeting. Secretary, Saint John Stamp Club, Box 6783, Station A, Saint John, N.B. E2L 4S2.

## LA SOCIÉTÉ PHILATÉLIQUE DE QUÉBEC

Regular meetings will be held in the basement of The Saint Charles Garnier Church, 1215 Chanoine Morel, Sillery. As in the past, we will hold meetings on the first and third Wednesdays of the month 7:30 - 10:00.

## TORONTO HARMONIE STAMP CLUB

R.P.S.C. Chapter 94 meets every 3rd Thursday of the month at Victoria Park Secondary School, 15 Wallingford Rd. Don Mills. We start at 7:30 p.m. in the Library Seminar Room. Visitors are always welcome and enquiries should be directed to J. Doehler (416-438-4862) at the above address or P. Mustard (690-9711).



## CHAPTER MEETINGS

### UNION PHILATÉLIQUE DE MONTRÉAL

(RPSC Chapter No. 3) meets every second and fourth Tuesday, September to June, at 7 p.m., 7110 8th Ave., Montréal (St. Michel) P.Q. Visitors always welcomed. Postal address: P.O. Box 398, Station A, Montreal, Quebec H3C 2T1.

### WEST TORONTO STAMP CLUB

R.P.S.C. Chapter 14 meets 7:30 p.m. second and fourth Tuesdays, except July and August at St. Pauls Runnymede Church, 404 Willard Ave., near Jane and Bloor, Toronto, West Toronto Stamp Club c/o 331 Rathburn Rd., Islington, Ont. M9B 2L9. Visitors welcome.

### WESTMOUNT PHILATELIC CLUB

Chapter 17 of the Royal. Meets every 4th Monday September through May (except December) at 7:30 p.m. at the United Service Club, 1195 Sherbrooke St. West, Montreal. President Bernie Margolis. Mailing address: c/o Robert Mirabelli, 9 Dobie Ave., Mt-Royal PQ, H3P 1R9. Visitors very welcome. Information: phone Robert Mirabelli (514) 735-0183.

### WINNIPEG PHILATELIC SOCIETY

Meetings: 1st & 3rd Thursdays (except July & August), 7:30 p.m., Veterans Club Room, downstairs, C.N. Union Station, Main St. at Broadway, Box 1425, Winnipeg, Manitoba R3C 2Z1. Visitors always welcome. □

### R.P.S.C. CHAPTER PRESIDENTS

If you want to extend your chapter's activities and increase the benefits to your membership, try 6 chapter ads in the "CP". You won't be disappointed with the results. See examples of chapter ads in this issue. The cost is only \$15.00 for 6 consecutive ads.

Contact

**PAUL M. BUREGA**

Advertising Manager

P.O. Box 15765, Station 'F'  
Ottawa, Ontario K2C 3S7  
CANADA

## CLASSIFIED

Rates — 15 cents per word. Minimum charge of \$3.00 for each insertion. Please indicate what heading ad to go under.

#### •PAYABLE•

CASH IN ADVANCE

**Advertising Manager**

**PAUL M. BUREGA**

P.O. Box 15765, Station F  
Ottawa, Ontario K2C 3S7

#### APPROVALS

**YOU ARE INVITED** to try a selection of my worldwide sets or singles; Canada plate no., blocks, or Topicals on approval. Please state your interests. References appreciated. Write A. Stedile, 820 Third St., Nelson, B.C. V1L 2R3.

**WORLDWIDE STAMPS ON APPROVAL**, mint, used, singles and sets. Up to 60% off c.v. on many items. Send for a selection today, stating your interests. R. Giguère 3560, rue Ignace, Laval, Quebec, Canada H7P 3R1.

**TRY OUR QUALITY APPROVAL SERVICE.** Sets & Singles, Germany, Canada, GR. Britain. Mint & used. R.P.S.C. # please. L. Pohland, Box 104, Burton, B.C. V0G 1E0.

#### APPROVALS

**JOIN THE CLUB** Receive for inspection monthly, a good mixture, a selection of lots or singles. You keep only what you like. Ask for details. B. Schulze, Box 4218, Victoria, B.C. V8X 3X8.

**DO YOU NEED STAMPS?** Approvals sent towards your want list. Gary T. Shertman, 224 Warwick Road, Edmonton, Alberta T5X 4P9.

**MINT CANADA** a new list every few months containing Victoria to Elizabeth. Centenials to Perfins, booklets to postage due and much more. The list is FREE. Foothills Philatelics, Box 1057, Stn. "M", Calgary, Alberta T2P 2K4.

#### AUCTIONS

**ESPECIALLY FOR COLLECTORS** is how our auctions are designed. Large lots, collections and individual items from around the world will always be found. Discover the fun of building your collection by buying in auction. Write today for a free copy of our next catalogue. John Sheffield Philatelist Ltd., P.O. Box 3171, Stn A, London, Ontario, Canada N6A 4J4.

**REGULAR PUBLIC AUCTIONS** including postal history. Large lots, accumulations, better singles, sets illustrated catalogues upon request. WILDROSE PHILATELICS, Dept. R, Box 1442, Edmonton, Alta, Canada.



# CLASSIFIED

## CANADA & BNA

**CANADIAN REVENUES:** F-VF, some at 66%, most at 50% Catalogue or less. Examples: 50 different 12.50; FB37-51 12.50; FB52 3.50; FB53 7.00; FSC7 40.00; FE10-17 3.50; FX49 17.00; FX117 3.75; FX121 4.00; FX131-5 65.00; FX140 55.00. Many others at similar discounts. Want lists solicited. 140 page reference manual; "Federal Bill and Law Stamps": \$17.50 Cdn plus postage and handling (50¢ to Cdn, \$1.50 to U.S. addresses). Edward Zaluski, 2777 Springland Drive, Ottawa, Ontario K1V 9X2.

**FREE CANADIAN PRICE LIST** features regulars, airs, officials, dues, revenues, etc. both mint and used. Ron Carmichael, Fingal, ON N0L 1K0.

**MINT NH** copy of 14 cents Peace issue, Scott value \$3.50. Yours for \$0.74 mint postage. Free bargain lists. RSV Page, 759 Cameo, Victoria B.C. V8X 3R9.

**FOR DISCRIMINATING COLLECTORS!** Canada and BNA mint and used at discount prices. Virtual complete inventory. Write for free catalogue. Approvals may be sent upon request and receipt of Want List and RPSC number. Noon's Stamps, 5334 Yonge St., Suite 1209, Willowdale, Ontario, Canada, M2N 6M2.

**CANADA DUCKS!** Up to 30% below original issue price - mint - booklets - panes - also s/n reproductions. Limited offer - as available. Free price list. Conservation Stamps - Box 1212, Station "A" - Montreal, Canada H3C 2X9.

## COMMONWEALTH

**70 Different AUSTRALIA** only 50¢ introduces attractive, Australia, New Zealand approvals. Albums available. Want lists welcome. Cheltenham Company, Box 5737T, Bethesda, Maryland 20814 USA.

## EXCHANGES

**OPENING FOR NEW MEMBERS,** Prompt service, B.C., W.W. SASE for details. Gordon J. Downey, P.O. Box 311, Station "O" Toronto, Ont. M4A 2N9, Canada. (1042)

## FOREIGN-AIRMAIL

**FRANCO-BRITISH CONCORD** supersonic air collection: 62 items: First Flights, few aerogr., FDC. Initial cost price: \$1100. US - My price: \$430. CDN - postpaid air regist. C. Haché (member 21140) Ordono, Andorre. Europe.

## SPECIAL OFFERS

**SENSATIONAL "ELITA" WORLD MIXTURE** Without charge, we will send you 6 oz. of this superb on paper mixture for your inspection. Fantastic catalogue value and variety guaranteed. You pay \$12.00 CA. only if you are completely satisfied - otherwise return it. No approvals - write for complete list. B. Schulze, Box 4218, Victoria, B.C. V8X 3X8.

## APPROVALS

**FANTASTIC FREE LIST** of our over 1000 Country and Topical Packets write today. Richard Stamps, Box 237, St. Lambert, Quebec, Canada J4P 3N8.

**TREASURE LOT** On & off paper high grade world mix with many better & top values. Lots of value, lots of fun. You pay \$18.00 CA. only if completely satisfied - otherwise return it. No approvals - write for complete list. B. Schulze, Box 4218, Victoria, B.C. V8X 3X8.

**NEW ISSUES** at face plus 35% - Canada at face plus 25% - Topicals - JB Stamps P.O. Box 310 Scarborough, Ontario, Canada M1E 4R8.

**WW MIXTURE APPROVALS** 3½ cents each. Pay for those selected and return remainder. Request a selection or information on other approvals. Ron Carmichael, Fingal, ON N0L 1K0.

**FULL RANGE** of 56 Brand Name albums and supplies at discounts up to 20% from our large, modern Toronto warehouse. Write for free 58 page catalogue. Noon's Stamps, 5334 Yonge St., Suite 1209, Willowdale, ON M2N 6M2.

**FREE** New Zealand set cataloging over \$3.00 with price lists of worldwide bargains. Send 37 cents postage. RSV Page, 759, Cameo, Victoria B.C. V8X 3R9.

## SOCIETIES

**SCANDINAVIAN ALERT!** Join the Scandinavian Collectors Club! Get The Posthorn, the Journal of Nordic philatelists. Also available is our library, Stamp Mart and study groups. Write SCC, P.O. Box 302E, Lawrenceville, GA., 30246-0302.

## WANTED - CANADA

**1930 ARCH and MAPLE LEAF ISSUE** on cover or card to foreign destination post marked prior to July 1, 1930. James W. Goss, 801 W. Gib Beaver, Suite 500, Troy, MI 48084.

## R.P.S.C. TIES AND LADIES' SCARVES

The Royal Philatelic Society of Canada ties and scarves are available from the R.P.S.C. National Office, P.O. Box 5320, Station F, Ottawa, Ontario K2C 3J1.

**Price is \$12.00 each**  
and includes mailing



## Stamp Launch Ceremony At Royal '88

Part of the many activities at the highly successful Royal '88 in Winnipeg, Man. was the June 17 launch of four Canadian commemorative stamps.

Participating in the launch were George Wilton (left), general manager of Canada Post's Midwest Division, and James E. Kraemer, president of the Royal Philatelic Society of Canada.

The four stamps saluted Canadian innovations in science and technology and were the final issues of a three-year series.

The stamp paid tribute to the Canadian developments of kerosene, Marquis wheat, cobalt cancer therapy, and the electron microscope.

Photo Courtesy *Performance*, Vol. 3, No. 8, Canada Post Corp.



## CANADIAN PHILATELIST ADVERTISING RATES

(Effective 1 January 1987)

	1 issue	6 consecutive issues (prices include 10% discount)
Covers or specified pages	\$250.00	\$1350.00
Full page	130.00	700.00
Half page	90.00	485.00
Quarter page	65.00	350.00
Eighth page	50.00	270.00

**Classified Ads:** 15 cents per word. Minimum charge of \$3.00 per insertion, payable strictly in advance. No discount allowed for classified ads.

**Terms of Payment:** To take advantage of the six issue rate (six issues rate less 10 percent) payments must be made in one sum at the time the contract is signed. This does not apply to classified ads or Chapter insertions.

All advertisers unknown to the R.P.S.C. must pay in advance for single insertions. Prepayment of six consecutive issues insures a fixed rate for that period. All other conditions are subject to change without notice.

**Deadline for Copy:** Copy to be in the hands of the Advertising Manager, Paul M. Burega, P.O. Box 15765, Station 'F', Ottawa, Ontario K2C 3S7, Canada **by the 21st of the second month preceding the date of issue**, i.e. November, January, March, May, July and September.

**Date of Issue:** First of the month of January, March, May, July, September and November, until further notice.

**Changes of Copy:** Copy will be repeated unless changes are supplied as above.

**Cuts, Halftones, etc.:** To be provided by the advertiser.

**Chapter Insertions:** \$15.00 for six consecutive insertions. No discount.

Send Data to: Paul M. Burega, Advertising Manager,  
P.O. Box 15765, Station 'F'  
Ottawa, Ontario, K2C 3S7, CANADA



---

# *The Postage Stamps & Postal History of Colonial Vancouver Island & British Columbia*

---

## THE GERALD E. WELLBURN COLLECTION

---



write to  
**EATON & SONS**

1860-505 Burrard St.  
Vancouver, B.C.  
V7X 1M6

or call (604) 689-3118

---



**STILL THE ONE!**



**For Better B.N.A.**

**J.N. SISSONS INC.**

Toronto Eaton Centre, Galleria Offices  
1st Floor, Suite 119, Box 513,  
220 Yonge St., Toronto, Ontario  
M5B 2H1 (416) 595-9800